

TELEGRAPHIC ADDRESS,  
"BEARDMORE, GLASGOW"

TELEPHONE NO 1356.

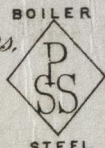
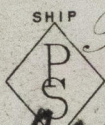
LONDON OFFICE,  
11 QUEEN VICTORIA ST. E.C.  
NEWCASTLE OFFICE,  
2 SAINT NICHOLAS BUILDINGS.

Parkhead Forge, Rolling Mills  
and Steel Works,  
Glasgow. 4<sup>th</sup> Sept 1893

Messrs Neilson Bros.

Bought of William Beardmore & Co.

Manufacturers of Steel Plates Bars & Rivets (Siemens Process) & Iron Plates Bars &  
Rivets for Ships, Boilers, &c. & Marine Engine Forgings of all descriptions.  
Iron & Steel Plates flanged for Boiler Fronts &c.



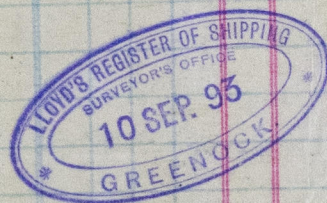
PS 312

N	2	58 459	4.10	5 1/4	1 1/16	111.
J	1	490	5. 3 1/2 tab	43 1/2		63 16.
M	1	132	7. 6 3/4	59 1/2	3/4	102.
V	8	465	6. 4	30	7/8	5. 8
						<u>1132 34</u>

Per CR Truck 4229  
to Blackwood & Co  
Port Glasgow

3 RS	18	0.16	4
1 .	10	2	98 3/32
1 .	5	8	8 3/32

Q. Hurdock  
8/9/93  
Superior to Lloyd's Register



© 2019

Lloyd's Register

GRK327-0123