

TELEGRAPHIC ADDRESS.  
"BEARDMORE GLASGOW"

TELEPHONE NO 1356.

LONDON OFFICE.  
11 QUEEN VICTORIA ST E C  
NEWCASTLE OFFICE.  
2 SAINT NICHOLAS BUILDINGS

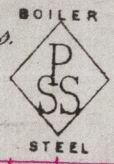
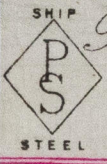
Parkhead Forge, Rolling Mills,  
and Steel Works,  
Glasgow.

Messrs Neilson Bros.

Aug 18 93

Bought of William Beardmore & Co

Manufacturers of Steel Plates Bars & Rivets (Siemens Process) & Iron Plates Bars & Rivets for Ships, Boilers, &c. & Marine Engine Forgings of all descriptions.  
Iron & Steel Plates flanged for Boiler Fronts &c.

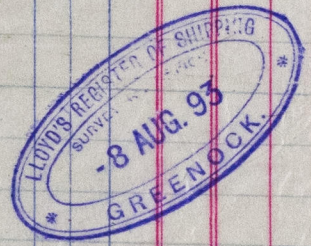


B	3/2	E	5	5 10 38	5.7	17	1 5/32	17 1 16
U	6	1453	2.0 1/2	9 1/4	7/16	12		
X	6		3.10 1/2			33	16	
M	2	815	7.6 3/4	59 1/2	3/4	113	8	
J	2	8 1/4 1/5	7.3 1/2 1/2 1/2	61 3/4	3/32	118	14	
P	3	88 1/2 1/2	9.4	50 3/4	1/32	152		
W	3	888	4.2	8	9/16	13	16	
27 Per 6 R Truck No. 39084							510	14

To Messrs Blackwood & Gordon  
Port Glasgow

*Blackwood & Gordon*  
4/8 1893  
Lloyd's Register

5 17.1.16 (3/11)  
14 1.7.0.24 (5/7)  
8 3.5.1.20 (4)



© 2019

Lloyd's Register

GRK327-0105