

TELEGRAPHIC ADDRESS,  
"BEARDMORE, GLASGOW"

TELEPHONE NO 1356.

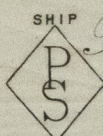
LONDON OFFICE,  
11 QUEEN VICTORIA ST. E.C.  
NEWCASTLE OFFICE,  
2 SAINT NICHOLAS BUILDINGS.

Parkhead Forge, Rolling Mills,  
and Steel Works,  
Glasgow. 15<sup>th</sup> Sept 1893

Messrs Neilson Bros.

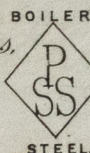
Bought of William Beardmore & Co.

Manufacturers of Steel Plates Bars & Rivets (Siemens Process) & Iron Plates Bars &



Rivets for Ships, Boilers, &c. & Marine Engine Forgings of all descriptions.

Iron & Steel Plates flanged for Boiler Fronts &c.

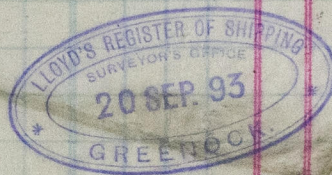


312 M 1 574  $\frac{P}{SS}$  5.24 R<sup>4</sup> - 8 1/4 9/16 132.

Per CR Truck No 3183. 3427  
To Blackwood Gordon  
Port Glasgow

(4/36)

Supplied to  
Gordon Dock  
18/9/93  
Lloyd's Register.



© 2019

Lloyd's Register  
Foundation

GRK327-0114