

TELEGRAPHIC ADDRESS,
"BEARDMORE, GLASGOW"

TELEPHONE NO 1356.

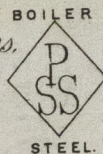
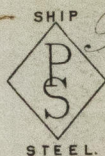
LONDON OFFICE,
11 QUEEN VICTORIA ST. E.C.
NEWCASTLE OFFICE,
2 SAINT NICHOLAS BUILDINGS.

Parkhead Forge, Rolling Mills,
and Steel Works,
Glasgow. 8th Sept 1893

Messrs Nelson Bros.

Bought of William Beardmore & Co.

Manufacturers of Steel Plates Bars & Rivets (Siemens Process) & Iron Plates Bars &
Rivets for Ships, Boilers, &c. & Marine Engine Forgings of all descriptions.
Iron & Steel Plates flanged for Boiler Fronts &c.



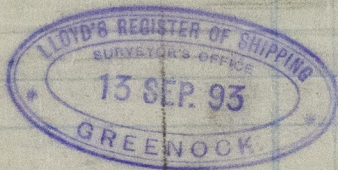
P/S

313 L	1	515	5. 2 7/8 tab	8 1/8	11/16	14.
K	1	516	"	4 1/8	"	6. 12
A	1	520	15. 0 5/8	5 1/2	5/8	15. 9 3/4
P	2	523	4. 3 1/2	18	"	3. 8
D	2	541	4. 6 3/8	9 1/2	"	1 3 20
H	2	666	4. 4 1/2	9 1/4	1/2	11.
W	1		3 4 1/2	!	}	1 3/4
T	1		4. 6	!	}	2 3/4
F	2		4 2 1/2	!	}	1 1 20
						2 1/2 3 20

Per R 3914 1/2 to
Blackwood & Gordon.
Port Glasgow

11/9/93
Lloyd's Register

APB. 3. 3. 12 2
2. 1 3 20 415
5. 2 2 0 16 38
36



© 2019

Lloyd's Register
Foundation

GRK327-0102