

TELEGRAPHIC ADDRESS.  
"BEARDMORE GLASGOW"

TELEPHONE NO 1356.

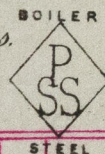
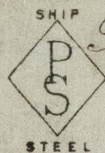
LONDON OFFICE.  
11 QUEEN VICTORIA ST E.C.  
NEWCASTLE OFFICE.  
2 SAINT NICHOLAS BUILDINGS

Parkhead Forge, Rolling Mills,  
and Steel Works.  
Glasgow. 28<sup>th</sup> July 93

Messrs Neilson Bros.

Bought of William Beardmore & Co.

Manufacturers of Steel Plates Bars & Rivets (Siemens Process) & Iron Plates Bars &  
Rivets for Ships, Boilers, &c. & Marine Engine Forgings of all descriptions.  
Iron & Steel Plates flanged for Boiler Fronts &c.



313.	A	5 <sup>501/2</sup> 528 650	21.14	70	15 <sup>1</sup> 32	13 3 2 4
	B	1 652	28.10 1/2	"	"	3 13 3 8
	C	1 727	13.11 1/4	"	"	1 15 2 20
	D	6 <sup>503</sup> 561 1/2 606	5.10 1/8	14	"	1 1 2 12
	F	5 645 17/16	5.7	"	1/8	13 2 12
	G	6 " "	5.4	"	"	15 1 20
		24 Per CR to Messrs				21 3 2 20

Blackwood & Gordon  
Port Glasgow

CR Truck No: 390914.39123.38896.38931.

18 20.7.3.16 (3/41)  
6 15.3.4 (4/41)

Frank A. Linger  
Surveyor to Lloyd's Register.

31/7/93  
Lloyd's Register  
GRK 327-0046