

TELEGRAPHIC ADDRESS.
"BEARDMORE, GLASGOW"

TELEPHONE No 1356.

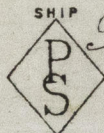
LONDON OFFICE.
11 QUEEN VICTORIA ST. E.C.
NEWCASTLE OFFICE.
2 SAINT NICHOLAS BUILDINGS.

Parkhead Forge, Rolling Mills,
and Steel Works.
Glasgow. 5th Augt 1893

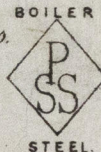
Messrs Neilson Bros.

Bought of William Beardmore & Co

Manufacturers of Steel Plates Bars & Rivets (Siemens Process) & Iron Plates Bars &
Rivets for Ships, Boilers, &c. & Marine Engine Forgings of all descriptions.
Iron & Steel Plates flanged for Boiler Fronts &c.



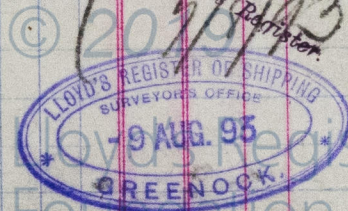
STEEL 313



B	1980		28.10 1/2 - 70 - 1 5/32	3 123 24
N	2834		9.4 * 50 1/4 * 3/4	1 23 8
O	3974/9		4.6 3/4 * 39 1/2 * 19/32	1 42 20
6	Per GR Truck No. 39109			6 - 1 1/4

To Messrs Blackwood
r Gordon Port Glasgow

4 4.17.2.16 (4/4)
2 1.2.3.8 (2/4)



GRK327-0092