

TELEGRAPHIC ADDRESS,
"BEARDMORE, GLASGOW."

TELEPHONE N° 1356.

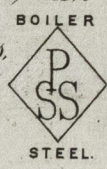
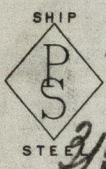
LONDON OFFICE,
11 QUEEN VICTORIA ST. E.C.
NEWCASTLE OFFICE,
2 SAINT NICHOLAS BUILDINGS.

Parkhead Forge, Rolling Mills,
and Steel Works,
Glasgow. 11 August. 1893

Messrs Neilson Bros

Bought of William Beardmore & Co.

Manufacturers of Steel Plates Bars & Rivets (Siemens Process) & Iron Plates Bars &
Rivets for Ships, Boilers, &c. & Marine Engine Forgings of all descriptions.
Iron & Steel Plates flanged for Boiler Fronts &c.



A	4	669	2.10	12	7/8	33 20
M	4	464	4.6 3/4	59 1/2	3/4	2 2 2
L	3	384	4.3 7/16	69 7/8	23/32	2 10 3 16
V	5	351/90	2.0 1/2	9 1/4	9/16	1 3 8
		235				
	16					

Per ck 39048 to
Blackwood & Gordon
Port Glasgow

14 19 16
Surveyor for Lloyd's Register.
124/1793

6 Plats. 2.4.1 20 3/16
5 " 2.12.3 16 5/12
5 " 1.3.8 2/4



© 2019
Lloyd's Register
Foundation
GRK327-0091