

TELEGRAPHIC ADDRESS.  
"BEARDMORE, GLASGOW"

TELEPHONE NO 1356.

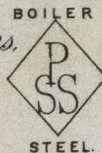
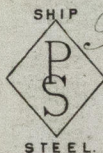
LONDON OFFICE,  
11 QUEEN VICTORIA ST. E.C.  
NEWCASTLE OFFICE,  
2 SAINT NICHOLAS BUILDINGS.

Parkhead Forge, Rolling Mills,  
and Steel Works,  
Glasgow. 18 Sep 1893

Miss Kulson Bros.

Bought of William Beardmore & Co.

Manufacturers of Steel Plates Bars & Rivets (Siemens Process) & Iron Plates Bars &  
Rivets for Ships, Boilers, &c. & Marine Engine Forgings of all descriptions.  
Iron & Steel Plates flanged for Boiler Fronts &c.



313C	1	55	20. 8 3/8	5 1/2	5/8	1	2	16.
n	1	490	4. 10	5 1/2	1/16		5	2 16.
S	2	545	7. 5 3/4	10 1/2	1 1/32	1	7	16
m	1	560	5. 2 1/2	8 1/2	9/16		133	
y	8	821	1. 9 1/2	8 1/2	5/8		22	
0	2	40	17 10 1/2	18	1/2		7	
		139					3 1/8	70

Perch 2 1/2 y 2 1/4 h to  
Blackwadd Gordon.

Port Glasgow

1 Plate	1	2	0	16	5
4	2	6	2	4	38
8	2	2	0		2 1/4
2	7	0		2 1/2	

*[Signature]*  
30/9/93



© 2019

Lloyd's Register  
Foundation

GRK327-0086