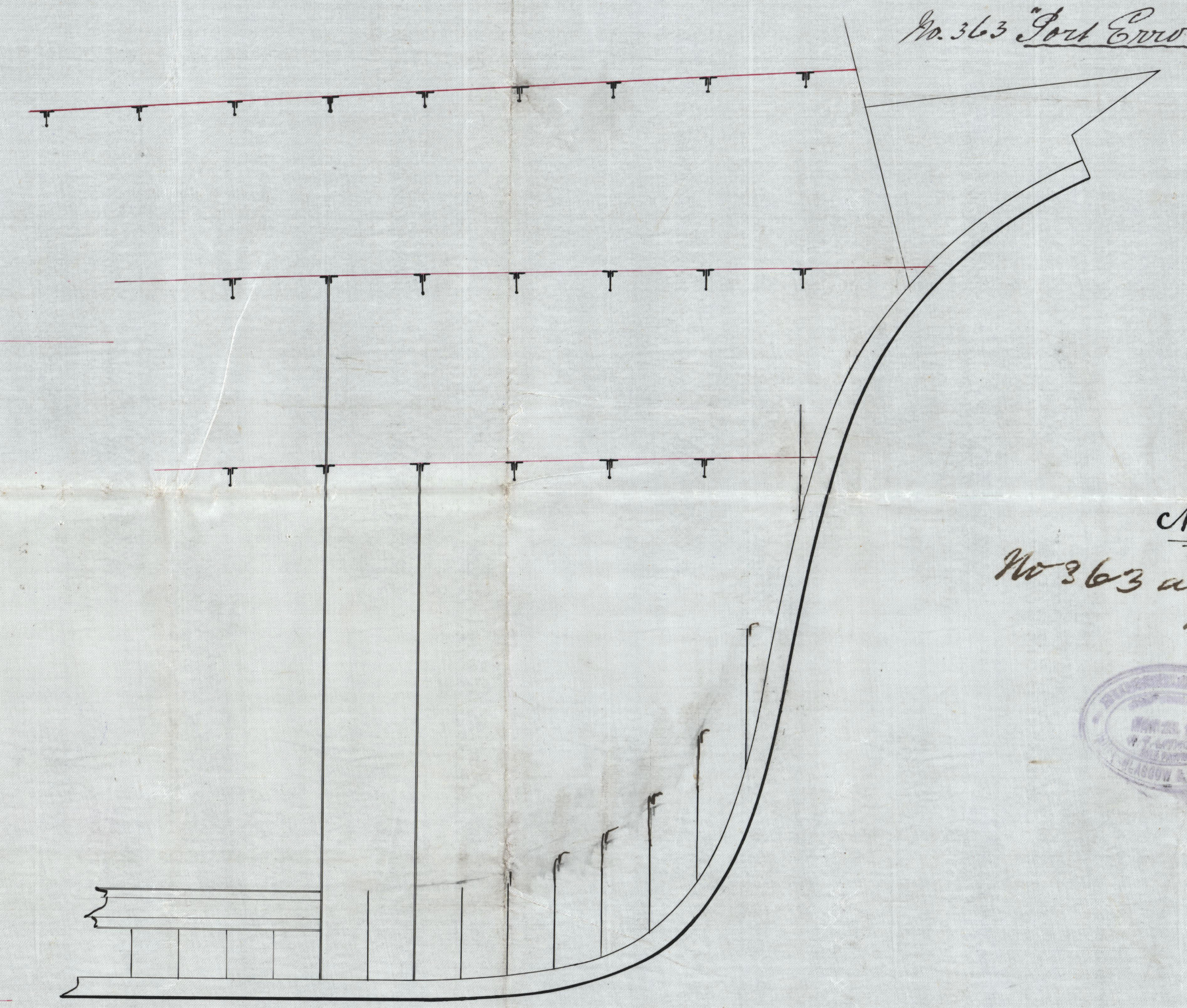
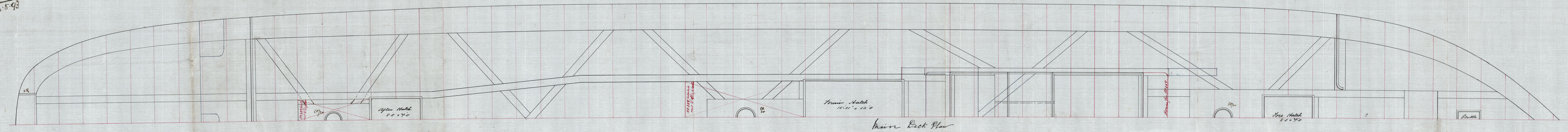


28.3.92
No. 338
16.5.93

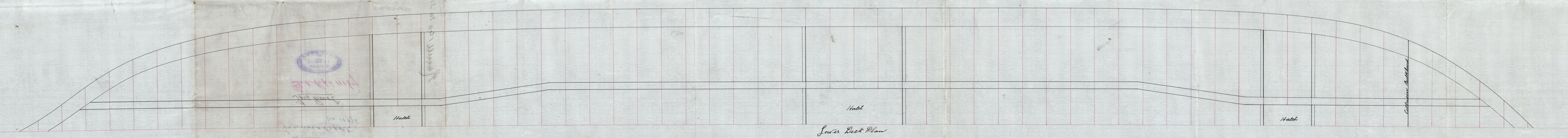
ALTERATIONS IN BLUE
For No. 363

"Langiemore"
Greenock Report No. 10700.
"Arranmore."
Greenock Report No. 10875.



No. 363 Port End

No. 313
No. 363 approved
14.2.94.



Handwritten notes in the bottom left corner, including a circular stamp and some illegible text.

Russell & Co No 313
Profile. On plan

"Largiemore."

Gr. Rpt. No. 10700.

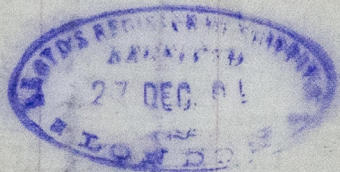
"Arranmore."

Greenock Report

No. 10875.

"Port Enrol."

Gr. Rpt. 11167



© 2020

Lloyd's Register
Foundation

GR4323-0150

Russell & Co No 31