

TELEGRAPHIC ADDRESS.
"BEARDMORE, GLASGOW"

TELEPHONE NO 1356.

LONDON OFFICE.
11 QUEEN VICTORIA ST. E.C.

NEWCASTLE OFFICE.
2 SAINT NICHOLAS BUILDINGS.

Parkhead Forge, Rolling Mills
and Steel Works.
Glasgow 5th March 1890.

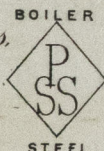
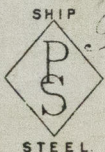
Amr. 16. 6. 1890

Bought of William Beardmore & Co.

Manufacturers of Steel Plates Bars & Rivets (Siemens Process) & Iron Plates Bars &

Rivets for Ships, Boilers, &c. & Marine Engine Forgings of all descriptions.

Iron & Steel Plates flanged for Boiler Fronts &c.



202	OK	1	25	9/32	5-9	x	5 1/2	x	1/8	.	9	.	.
2		2	25	8	7-7	x	6 1/2	x	1 1/2	2	1	1	12
2		1	32		6-1 1/2	x	4 1/2	x	7/8	.	8	.	8
2		1			12-0	x	4	x	"	.	2	.	2

2 20 20 20 20 20 20 20 20 20 20 20 20 20

2 20 20 20 20 20 20 20 20 20 20 20 20 20

2 20 20 20 20 20 20 20 20 20 20 20 20 20

J. J. Robert
Surveyor to Lloyd's Register.

6/3/90

2 20 20 20 20 20 20 20 20 20 20 20 20 20



© 2019

Lloyd's Register
Foundation