

dh 8/12/58

CHAS. H. HALL

Tunnel.

s.s. "Baron Elbank"  
Greenock Report 16. 9. 72

Note all suction to have cast iron pipes.

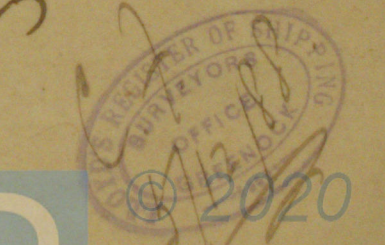
Pumping Arrangement.  
S. S. No. 101.  
Scale 1/4 inch = 1 foot.

"Drawing No. 1172"



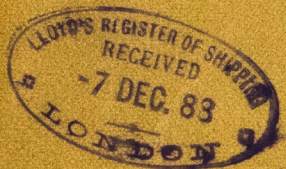
Accessible sluices should be fitted in engine room bulkhead  
H.C.  
7.12.89

V. J. Allen  
7/12/89

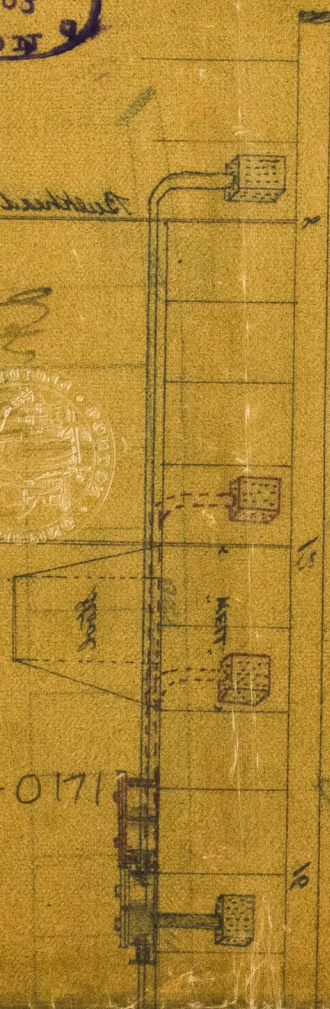


Lloyd's Register Foundation





845 1/2 inch dia

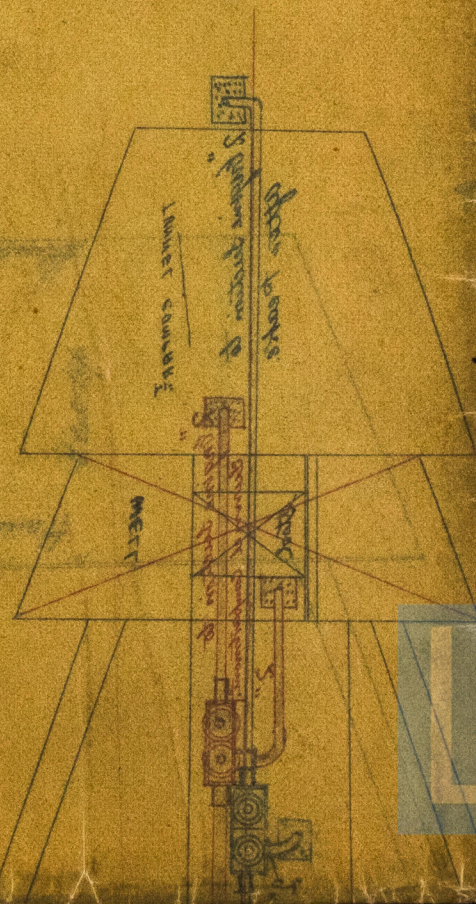


GRK 311-01712

*Plumbing drawings*

*9/8 12/101*

*Send to back - 1 foot*



© 2020

Lloyd's Register  
Foundation