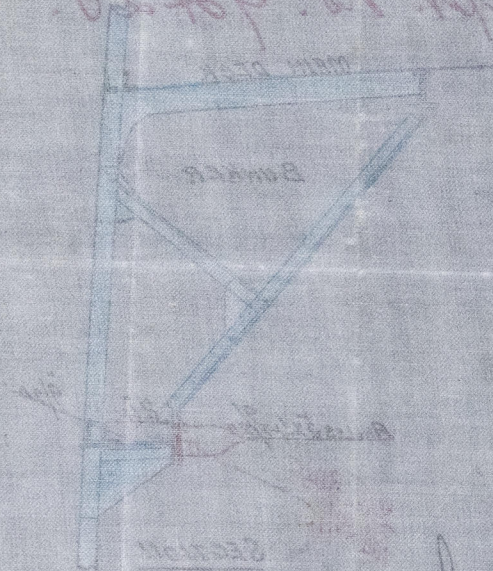
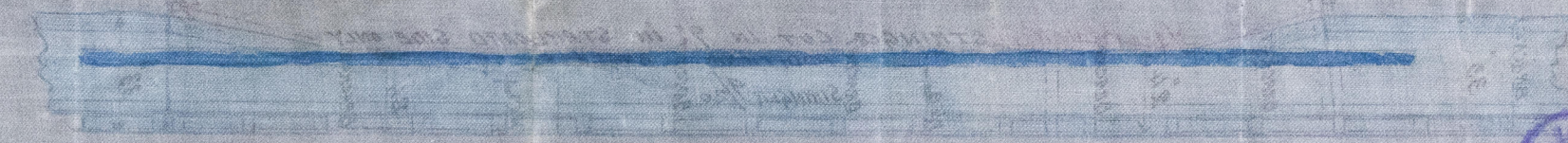


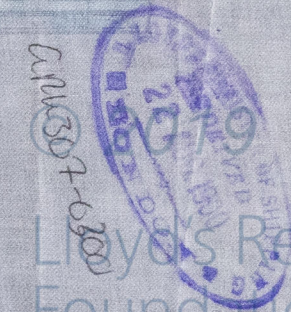
2000 ft. long
File Dept. 12. 24. 28



Handwritten signature or initials.



2.5. 19. 8/2
Scale 1/2 inch = 1 foot

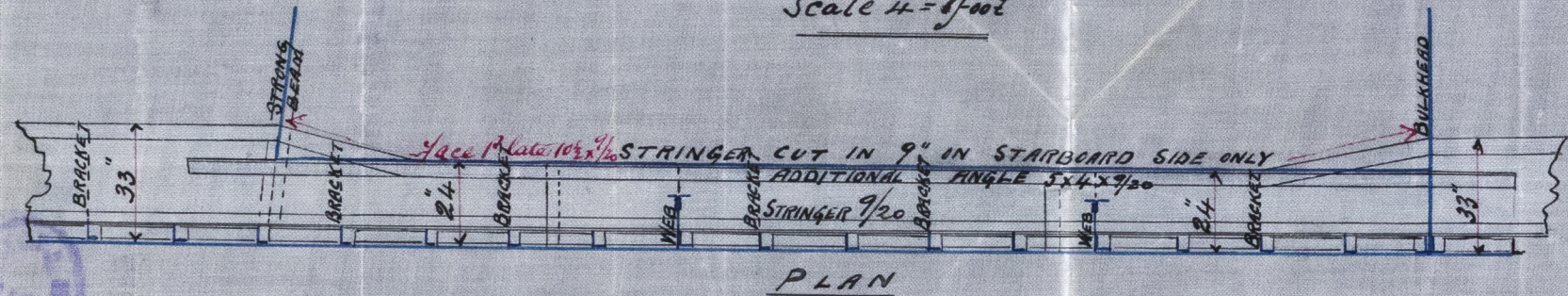


Lloyd's Register
 Foundation

Sketch showing Lower DK. Stringer in way of Boilers

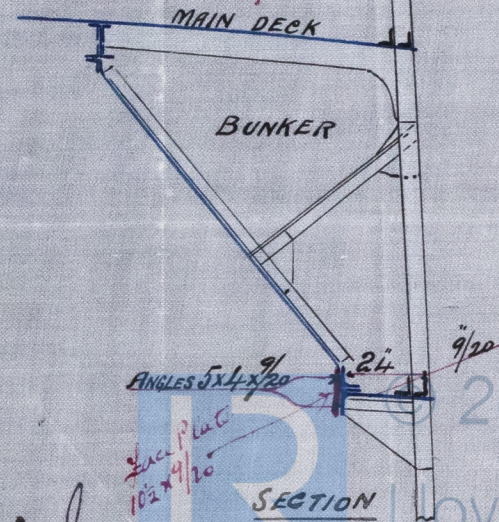
S.S. No 8/c

Scale $\frac{1}{4}'' = 1'$ foot



PLAN

S.S. "Hisanga"
Grk. Rept. No. 9428.



SECTION

13. 9. 84.

APG.

2019
Lloyd's Register
Foundation
ARH307-0500