

Mill Department.
London Office.
41 Queen Victoria St.
E.C.

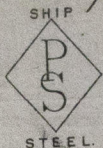
Parkhead Iron & Steel
Forge & Rolling Mills.

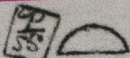
Glasgow. 3rd July 1886

Messrs John Donald & Sons

Bought of J. & W. Beardmore.

Manufacturers of Steel Plates & Bars (Siemens Process) & Iron Plates & Bars for
Ships, Boilers, &c. & Marine Engine Forgings of all descriptions.
Iron & Steel Plates flanged for Boiler Fronts &c.



205. 2 6345  13. 4 x 77 x 3/4 1 15 3 16

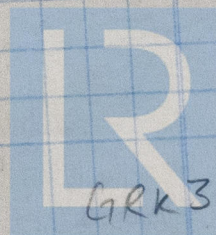
Flanged to order

Per rail to messrs Blackwood & Gordon

Port Glasgow. Outline No. 1420

(446)

Size guaranteed
(Cii 545)



© 2019

Lloyd's Register
Foundation

GRK 306-0957