

London Office.
11 Queen Victoria St.
E.C.

Mill Department.

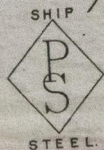
Parkhead Iron & Steel
Forge & Rolling Mills.

Glasgow. 11th June 1886

Messrs John Donald & Sons

Bought of J. & W. Beardmore.

Manufacturers of Steel Plates & Bars (Siemens Process) & Iron Plates & Bars for
Ships, Boilers, &c. & Marine Engine Forgings of all descriptions.
Iron & Steel Plates flanged for Boiler Fronts &c.

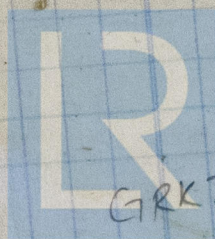


205.	B-16	I	761		5.	2	22	7/8	.	6	.	8
	A	1	986		12.	4	6	7/16	.	5	.	8
98	B	1	760		5.	6	60	7/16	.	5	.	8
	9	3			5.	3	21	.	.	5	.	.

7 Per rail to Messrs Blackwood & Co. Ltd.
Port Glasgow. Outwards 76th 4875.

Size 14 x 14 in.
(1 Ci 545)

9114
+
9117



© 2019

Lloyd's Register
Foundation