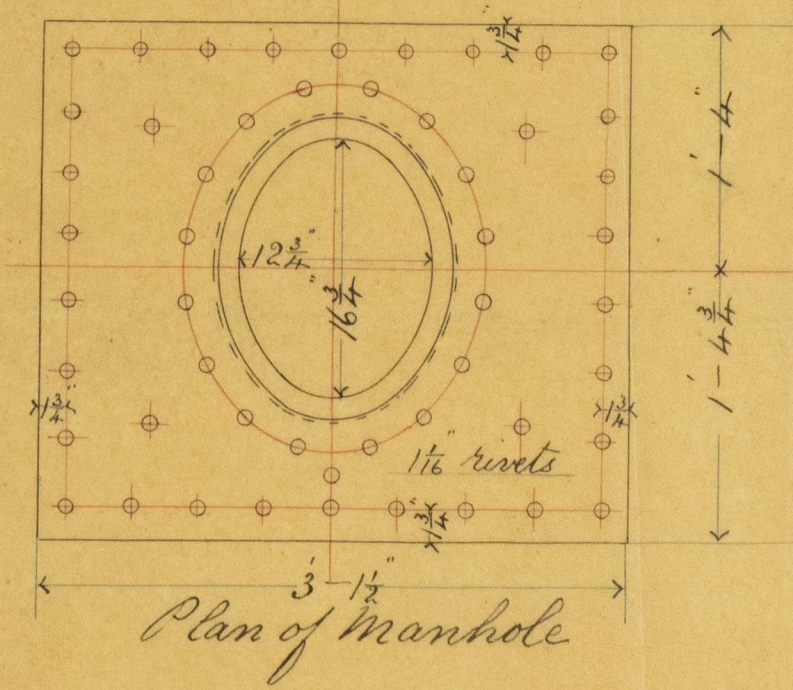


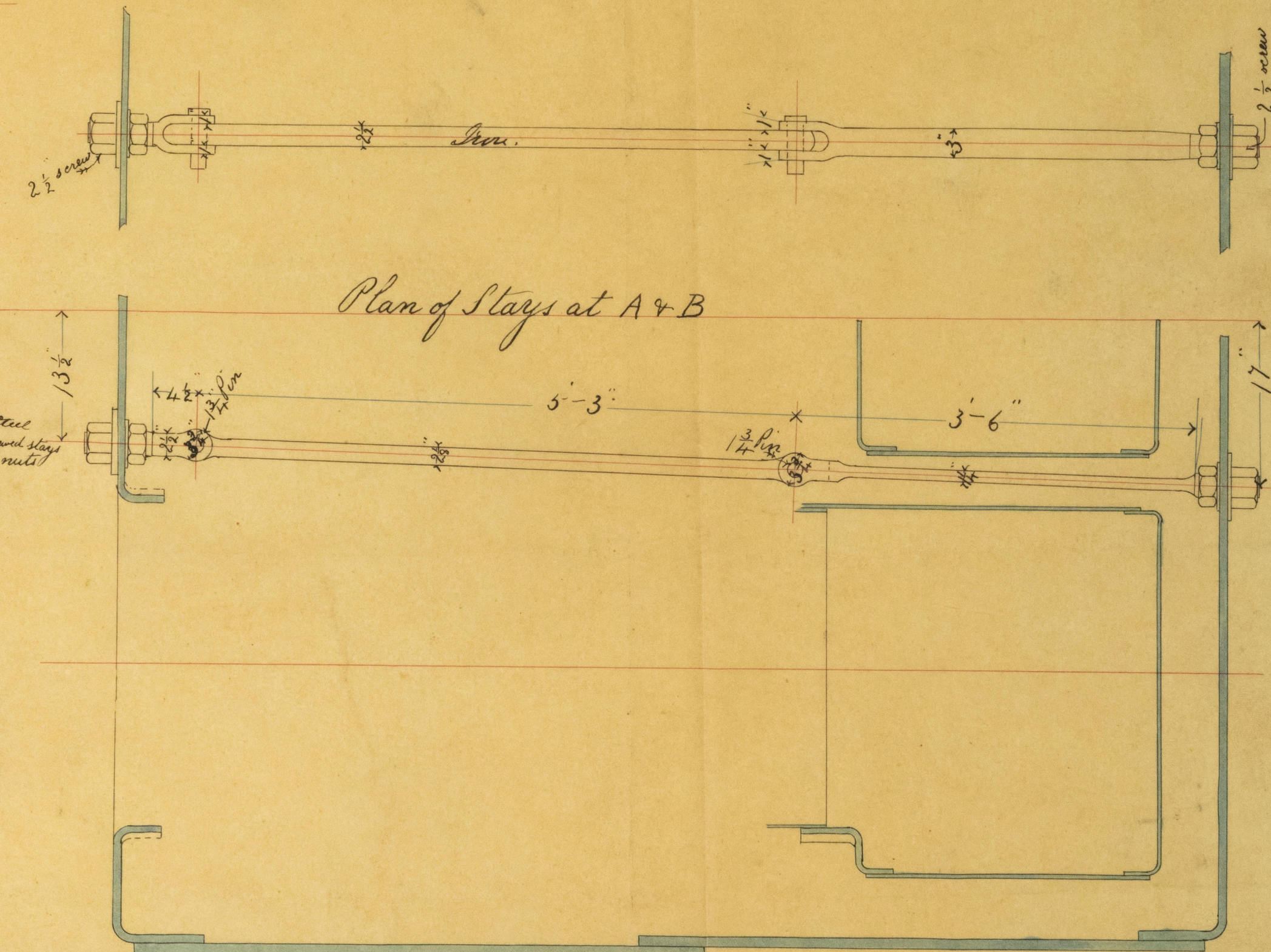
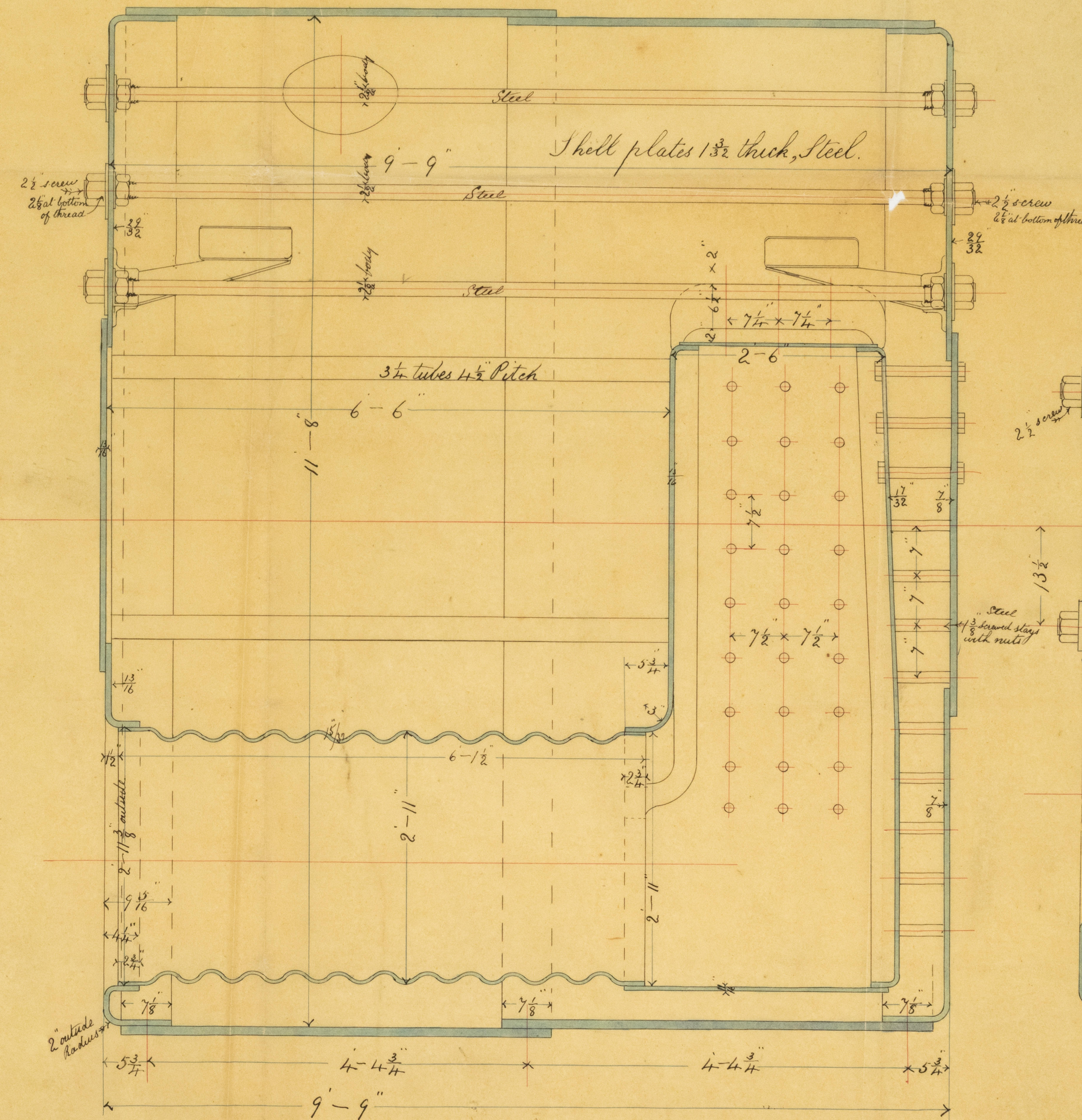
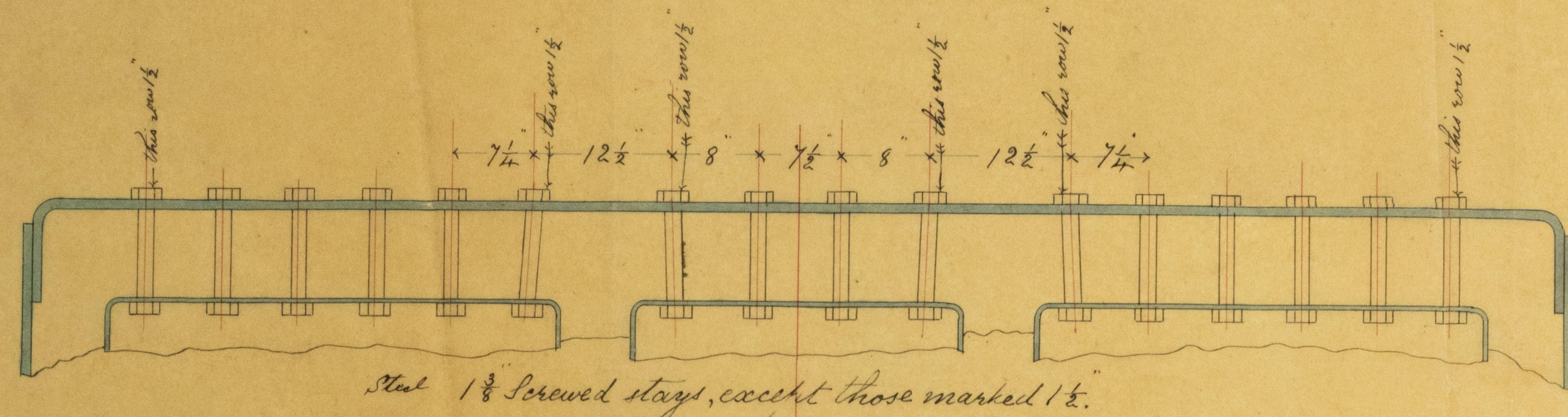
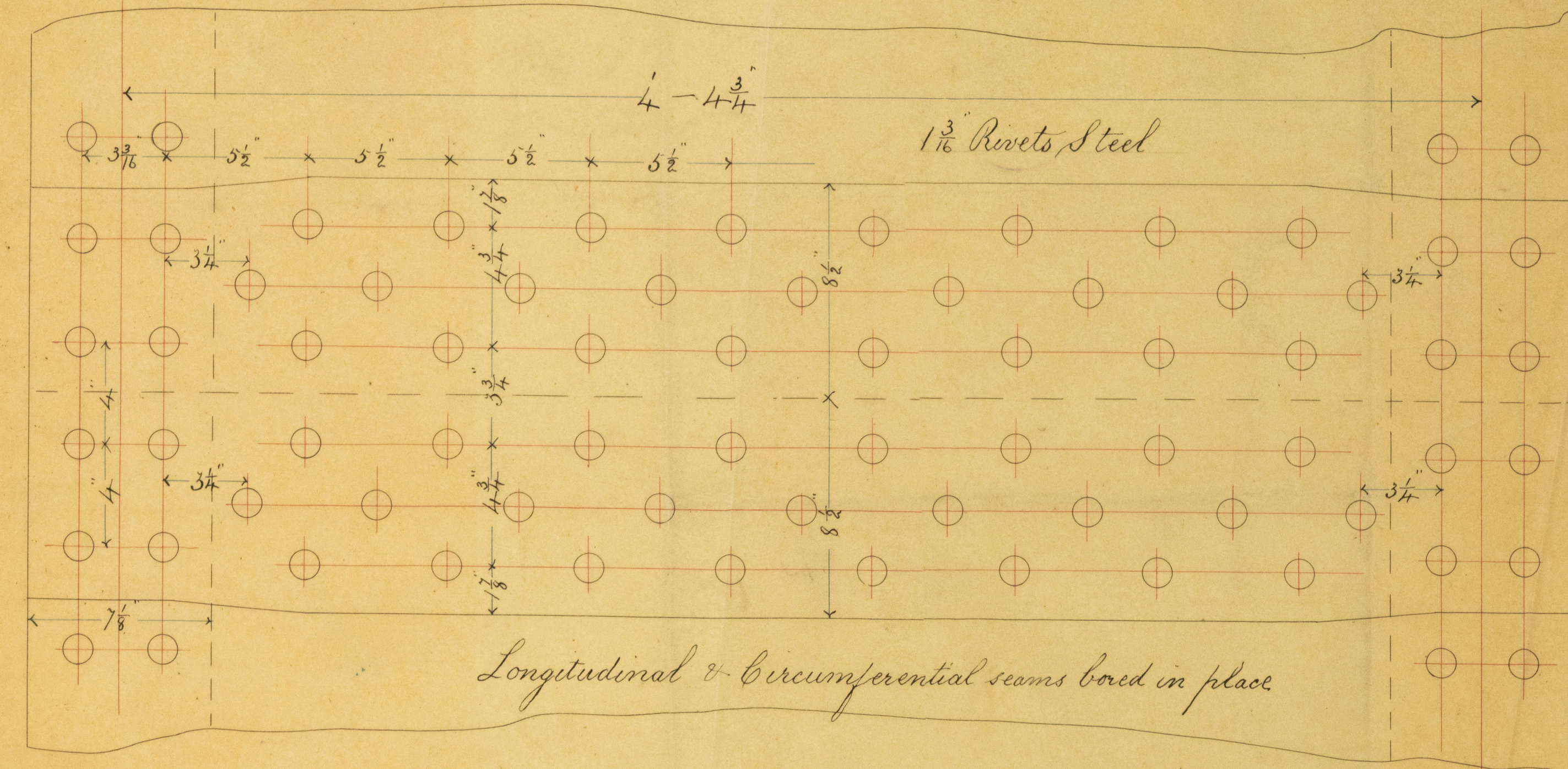
s.s. 'Danube' Greenock Report No. 9159



Boiler E-N°181

SCALE One INCH TO THE FOOT
DAVID J. DUNLOP & CO
ENGINEERS & SHIPBUILDERS
PORT GLASGOW.

Working Pressure 150 lbs



Stay tubes 3/4 inch thick
outside rows 1/2 inch
to be screwed into both
tube plates & leaded over.
Plain tubes N° 9 W.S.

Exam'd
A.C.H.