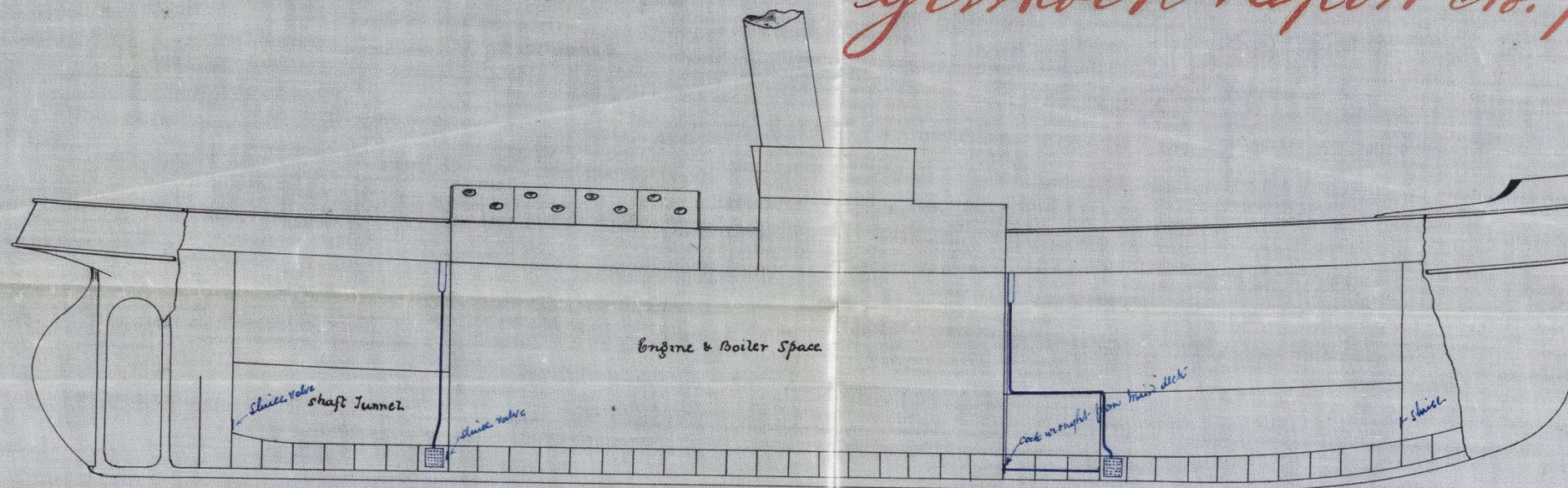
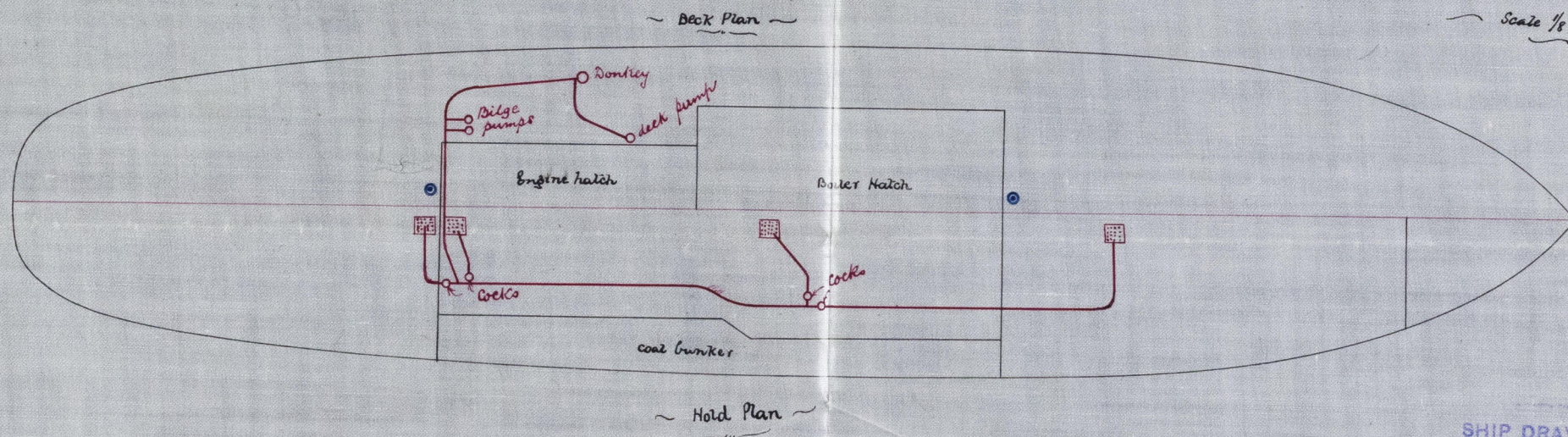


*S.S. "Danube"*  
*Greenock Report No. 9159*



— Deck Pumps to holds  
 — Engine Pumps to holds

Proposed pumping Arrangement  
 S.S. No 181  
 Scale 1/8 inch = 1 foot



SHIP DRAWING OFFICE.  
 DAVID J. DUNLOP & CO.,  
 1100 WORKS, PORT-GLASGOW.  
 Sent out April 1886

D.J.  
 24/4/86



Lloyd's Register  
 Foundation

GLH305-0298