

Mill Department.
London Office.
11 Queen Victoria St.
E.C.

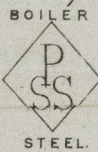
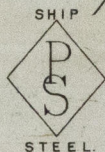
Parkhead Iron & Steel
Forge & Rolling Mills.

Glasgow. 16th June, 1883

Messrs. R. & W. Lellam.

Bought of J. & W. Beardmore.

Manufacturers of Steel Plates & Bars (Siemens Process) & Iron Plates & Bars for
Ships, Boilers, &c. & Marine Engine Forgings of all descriptions.
Iron & Steel Plates flanged for Boiler Fronts &c.



168	10	2	46" diam.	x	9/16	.	40	3	8		
168	8	2	5.5	x	64	x	1/16	.	15	12	
168	11	1	11.5	x	50	x	3/4	.	10	1	24
168	7	1	7	x	51	x	5/8	.	7	2	8
168	5	1	5	x	32.5	x	1/2	.	3	8	
168	5	1	5	x	3	.	.	.	2	3	4

8 For rail to Messrs. D. & W. Lellam.

Bogston. Wm. Arncliffe No. 18649.

Hand over
Surveyor, Lloyd's Register
18.6.83



© 2019

Lloyd's Register
Foundation

ARK301-0180