

— Sle $\frac{1}{2}$ inch - 1 foot —

- Length 260 ft - Breadth 33 ft - Depth moulded 18 ft 1 1/2 inches -

Length of Drop about 25 ft. Length of bridge about 30 ft. Length of Forecastle about 60 feet

Double Bottom all fore & aft

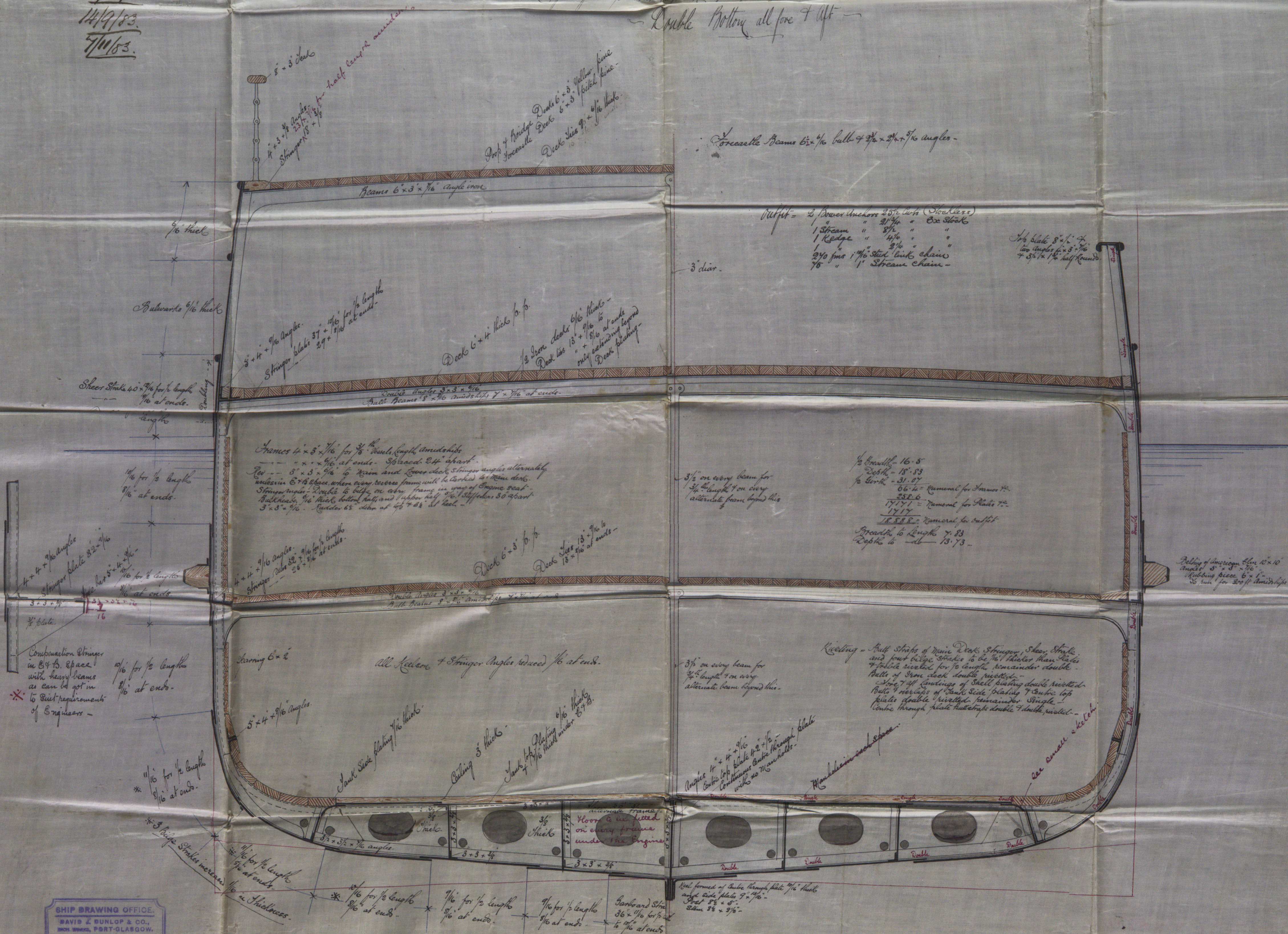
S. S. Pocharo
Greenock Report No. 8584

Let: ΔG°

12/3/83.

14/9/83

7/11/83.



DAVID & DUNLOP & CO.,
IRON WORKS, PORT-GLASGOW.

Sent out 6th March 1883

DAVID J. DUNLOP & CO

ENGINEERS & SHIP BUILDERS

PORT GLASGOW

GRK 301-0175