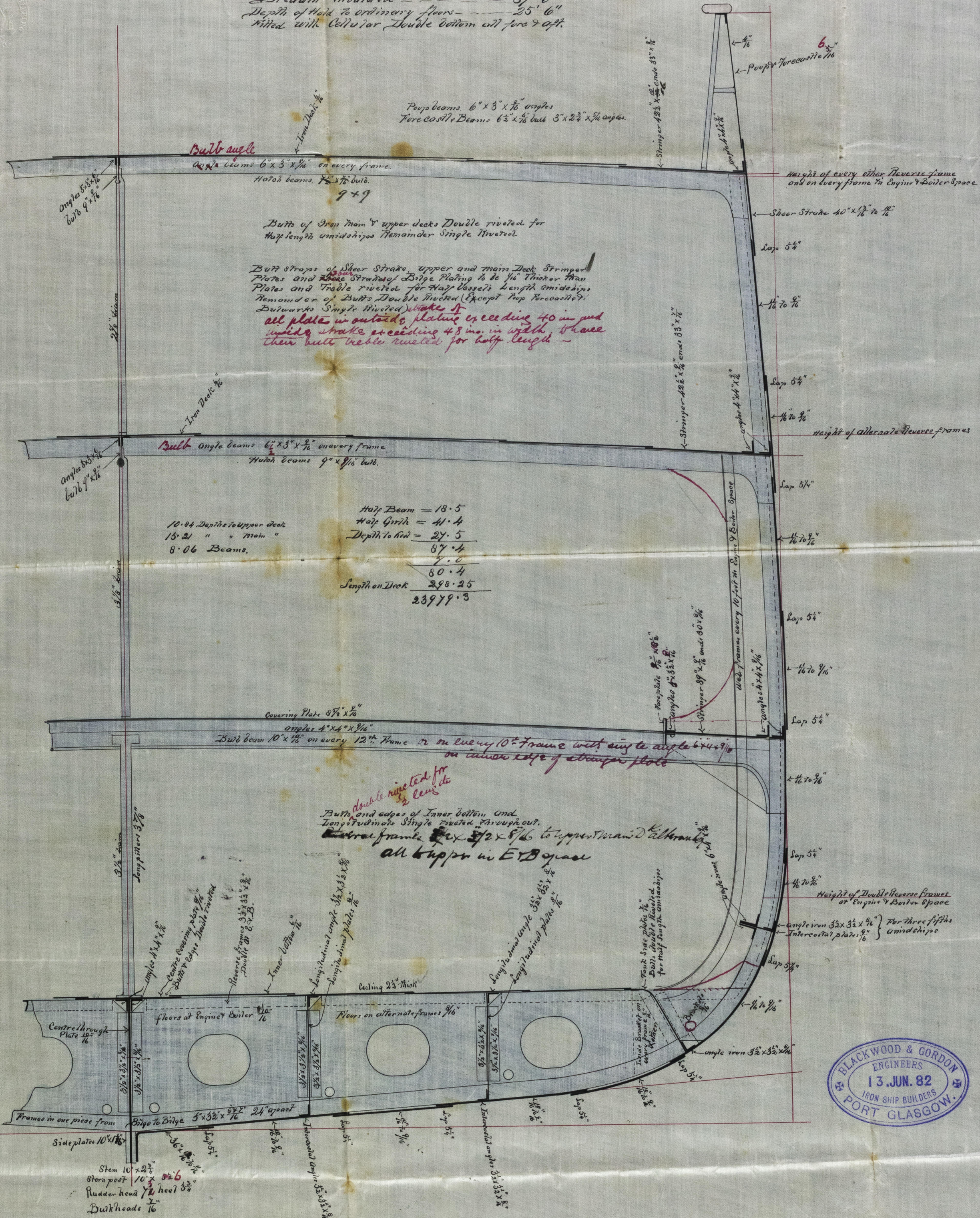


S.S. "Entella" & "Stura"
Greenock Report Nos 8490 & 8556

24. 6. 82

Midship Section for Screw Steamers Nos 181 & 182.
To Class 100 A1.

Length keel & Forecastle 300' 0"
Breadth Moulded 34' 0"
Depth of hold to ordinary floor 25' 6"
Filled with Cellular Double bottom all fore & aft.



24/6/82