

S.S. "Brunio" Greenock Report No 8327

Lt. to G.M.R.
21/1/82.

MIDSHIP SECTION

S.S. No 68.

TO CLASS 100A.1

QUARTER DECK, BRIDGE & TOP OF FORECASTLE

Scale 1/2 Inch = 1 Foot.

1882.
18th January.
GLASGOW

| | | | |
|--------------------------|-----------|---|--|
| Half Breadth. | 13.5 | Equipment. | |
| " Girth | 25.9 | 2 Bone Anchors 13 1/2 cent 2 1/2 inch } Collective 18 1/2 | |
| Depth | 15.5 | " " " " " " } 38 1/2 cent. | |
| 1 st Numeral | 54.9 | 1 Beam Anchor 4 3/4 " " " " | |
| Length | 183.84 | 1 Hedge " 2 1/2 " " " " | |
| | 21.98 | " " " " " " " " | |
| | 4.89 | 210 Lathams 1 1/2 Stud Chain Cable | |
| | 16.47 | 60 " " " " " " " " | |
| | 4.39 | 75 " " " " " " " " | |
| 2 nd Numeral. | 1009.28 | 90 " " " " " " " " | |
| add 7 th | 1009.28 | 90 " " " " " " " " | |
| Equip. Numeral. | 11102.086 | | |
| Breadth to Length. | 2 6.81 | | |
| Depth to Length. | 11.86 | | |

Note. Quarter Deck scantling in Red.

Removal at Quarter Deck 63.

Frames all to Gunwale of Break.

Reverse Frames to Hold Beam & Break

Stringer alternately.

Main Sheer Strake doubled for 30 feet

and sides of Break increased 1/2 at Break.

Butt straps of Sides of Break, Sheer Strake

& Strake next below to thicker & double

riveted in way of Break.

Main Stringer to extend 7 frame spaces

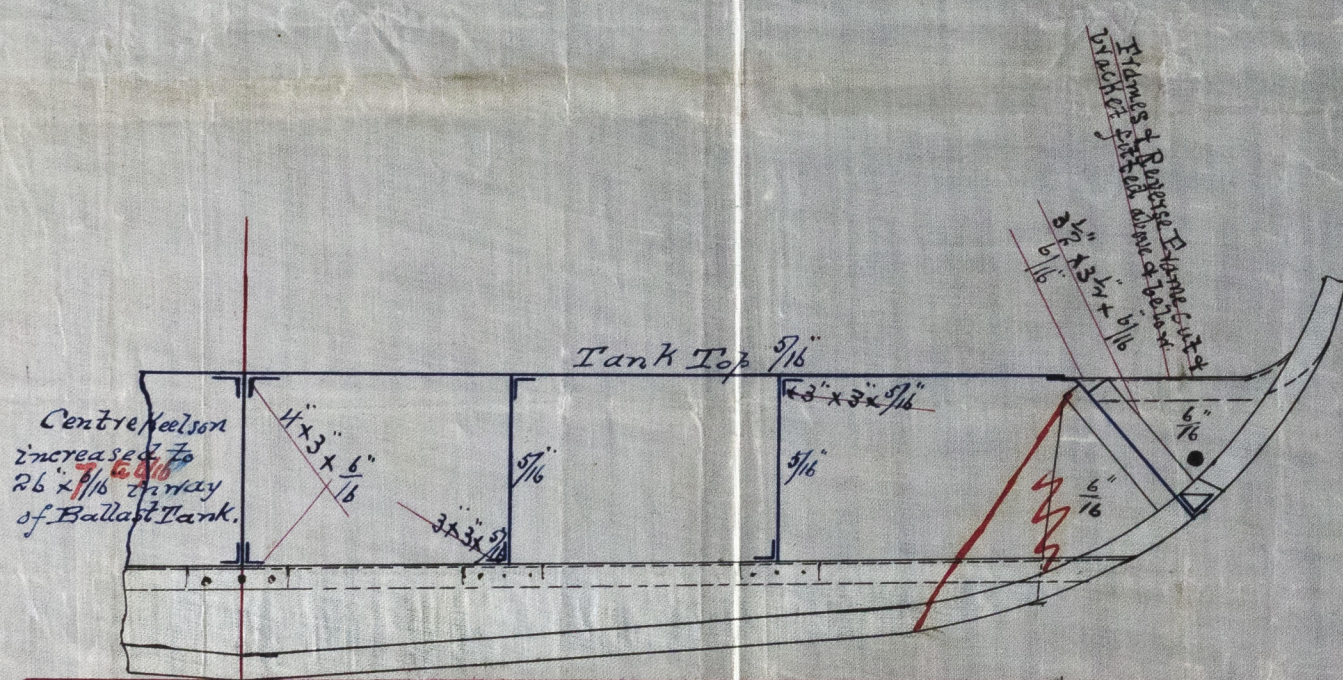
abaft Break. Raised Deck Stringer.

4 frame spaces before Break. Break

Hold Stringer to overlap Main

Stringer about 16'-0"

also strengthened at
front of Bridge House



Section of Ballast Tank
in after Hold.

27/1/82

