

S.S. "Hye Long"

N<sup>o</sup> 75

S.S. "Hye Long"  
Greenock Report No. 8290

Shell plates double riveted in horizontal, double in circumferential seams.

Thickness of Shell plates  $\frac{7}{8}$ "  
do Furnaces  $\frac{9}{16}$ "  
do Tube  $\frac{5}{8}$ "  
do Combustion Chamber  $\frac{1}{2}$ "  
do back & front of boiler  $\frac{25}{32}$ "

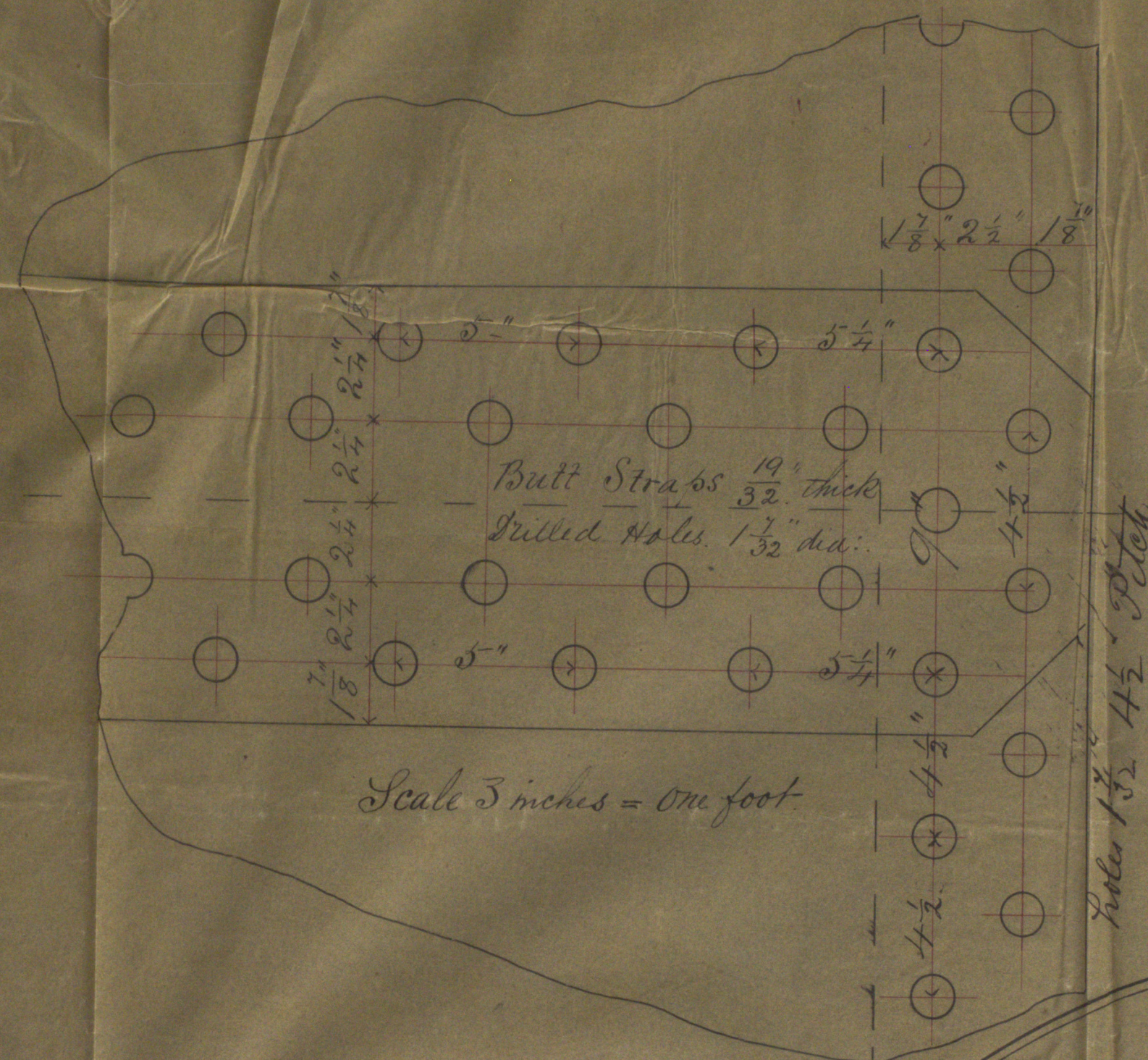
Diameter of Rivets in Shell  $1\frac{1}{2}$ " Pitch

Rivet holes in shell drilled in Horizontal Seams

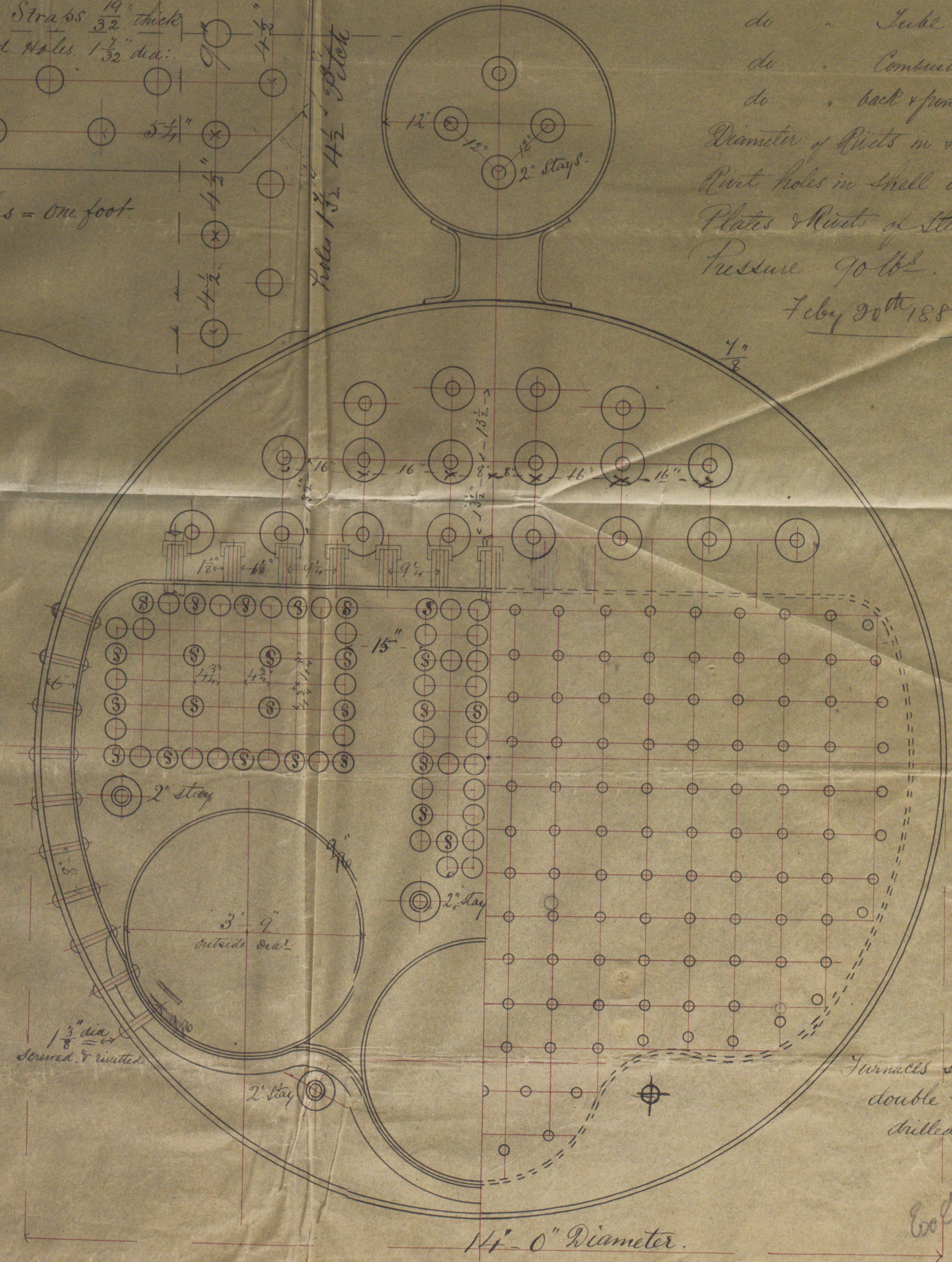
Plates & Rivets of Steel Stays & Tubes of Iron.

Pressure 90 lbs.

Feb'y 30<sup>th</sup> 1882



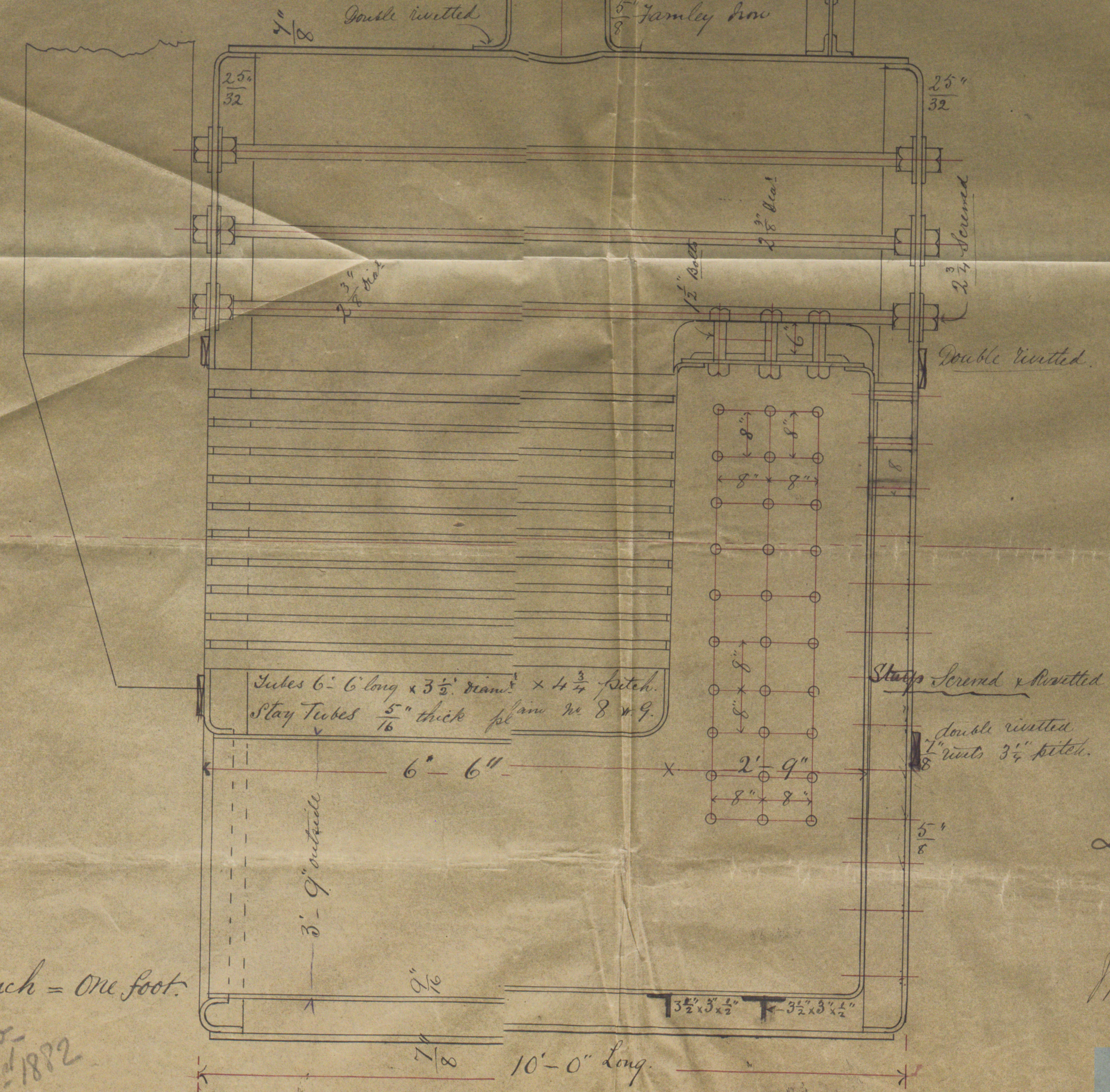
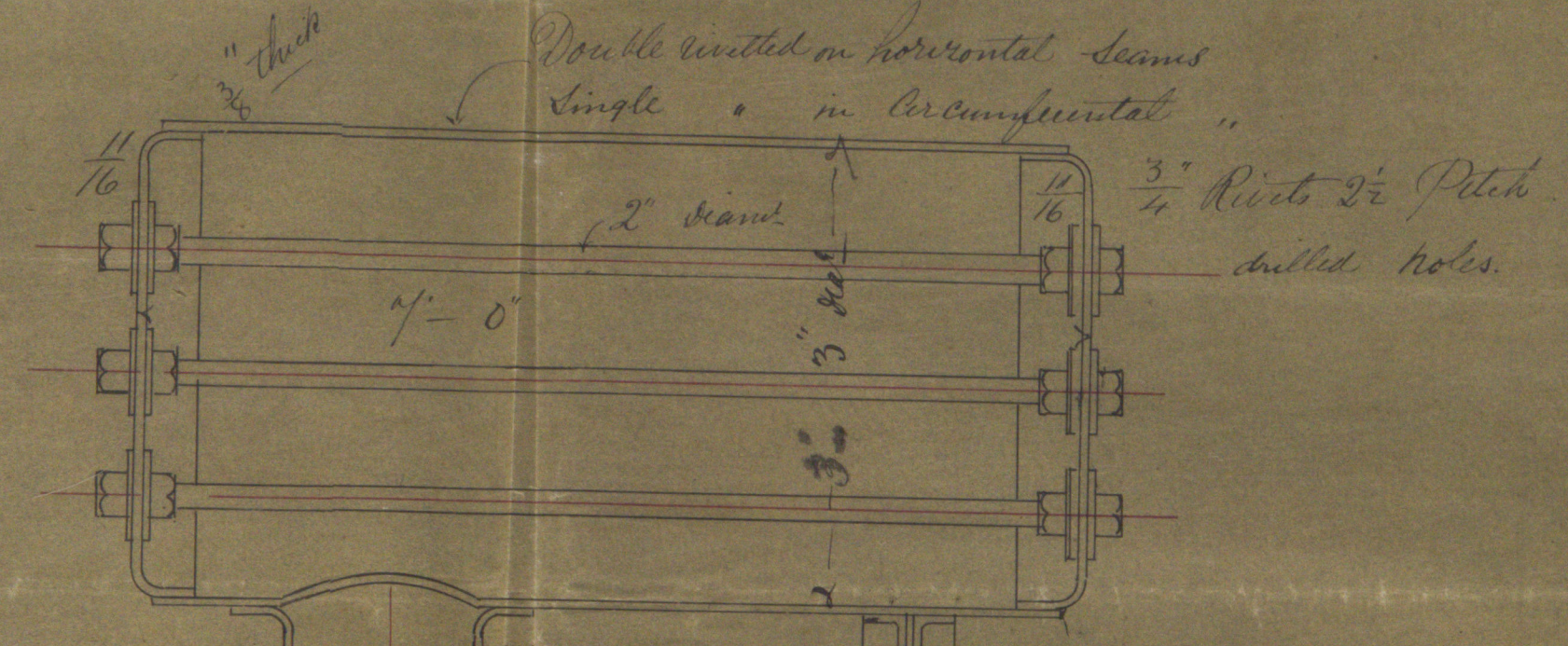
Scale 3 inches = one foot



11'-0" Diameter.

Scale  $\frac{3}{4}$  inch = one foot.

Edw. M. R. Glasgow  
March 1<sup>st</sup> 1882



Lt. B. J. 3/3/82

M 2/3/82



W. O. Younger



© 2019

Lloyd's Register  
Foundation

GRK299-0052