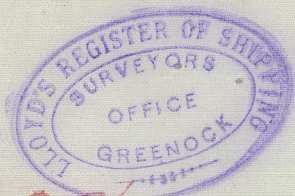


RECEIVED 21st FEB. 1902

s.s. "Teviotdale"
Greenock Report No 8228

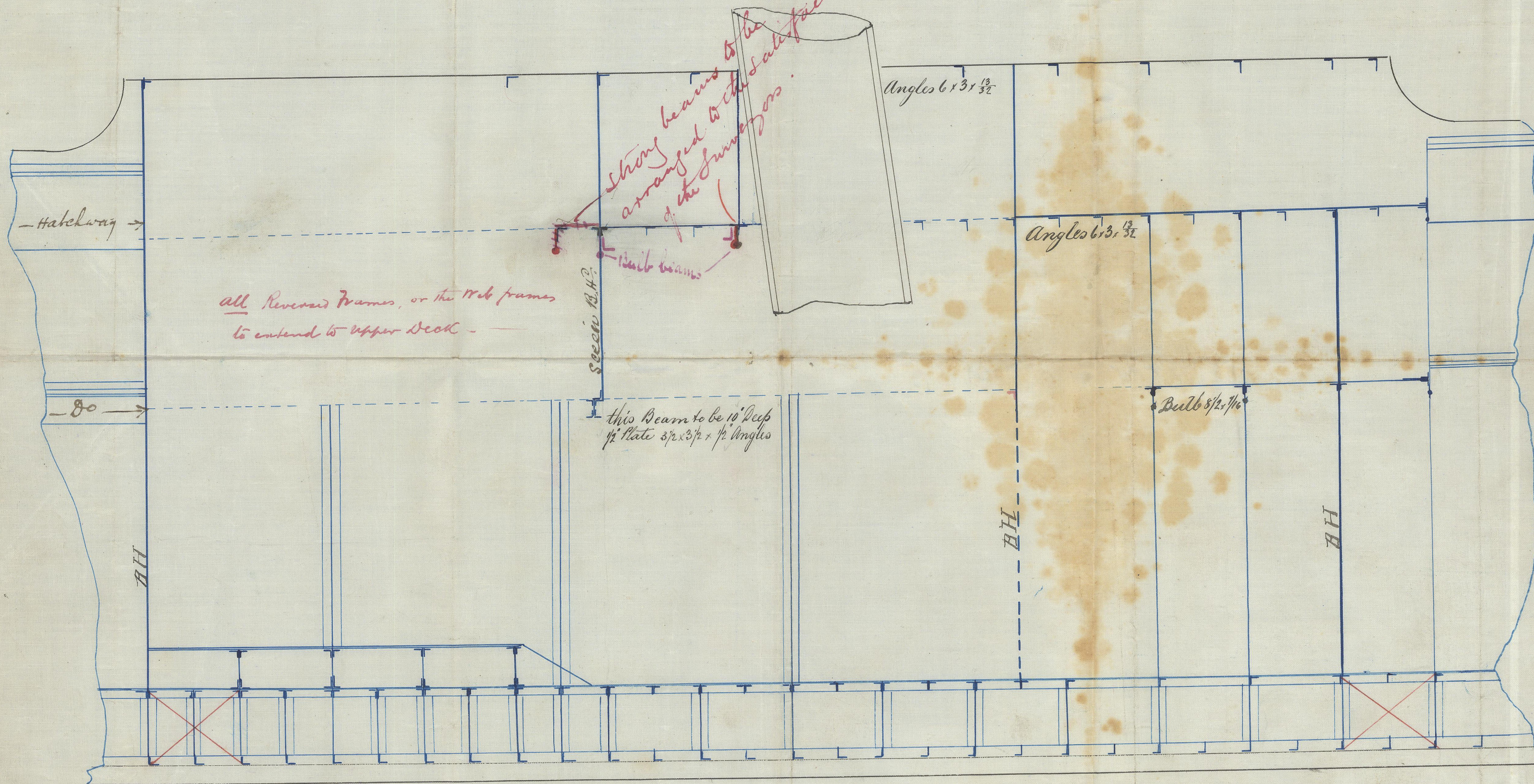


S S No 121

Scale $\frac{1}{4}$ inch = 1 foot

ROBERT STEELE & CO.,
Shipbuilders & Engineers,

GREENOCK 9/2/02



Arrangement of Beams
in
Engine and Boiler Space



© 2021

Lloyd's Register
Foundation

GRK 298-0108