

B¹/₂ "Bolivia" of Liverpool
Greenock Report 8052
Es class 100. A. Also Valdivia, Jk. 8078

Proportions.
5.9 Breadths.
8.6 Depth.

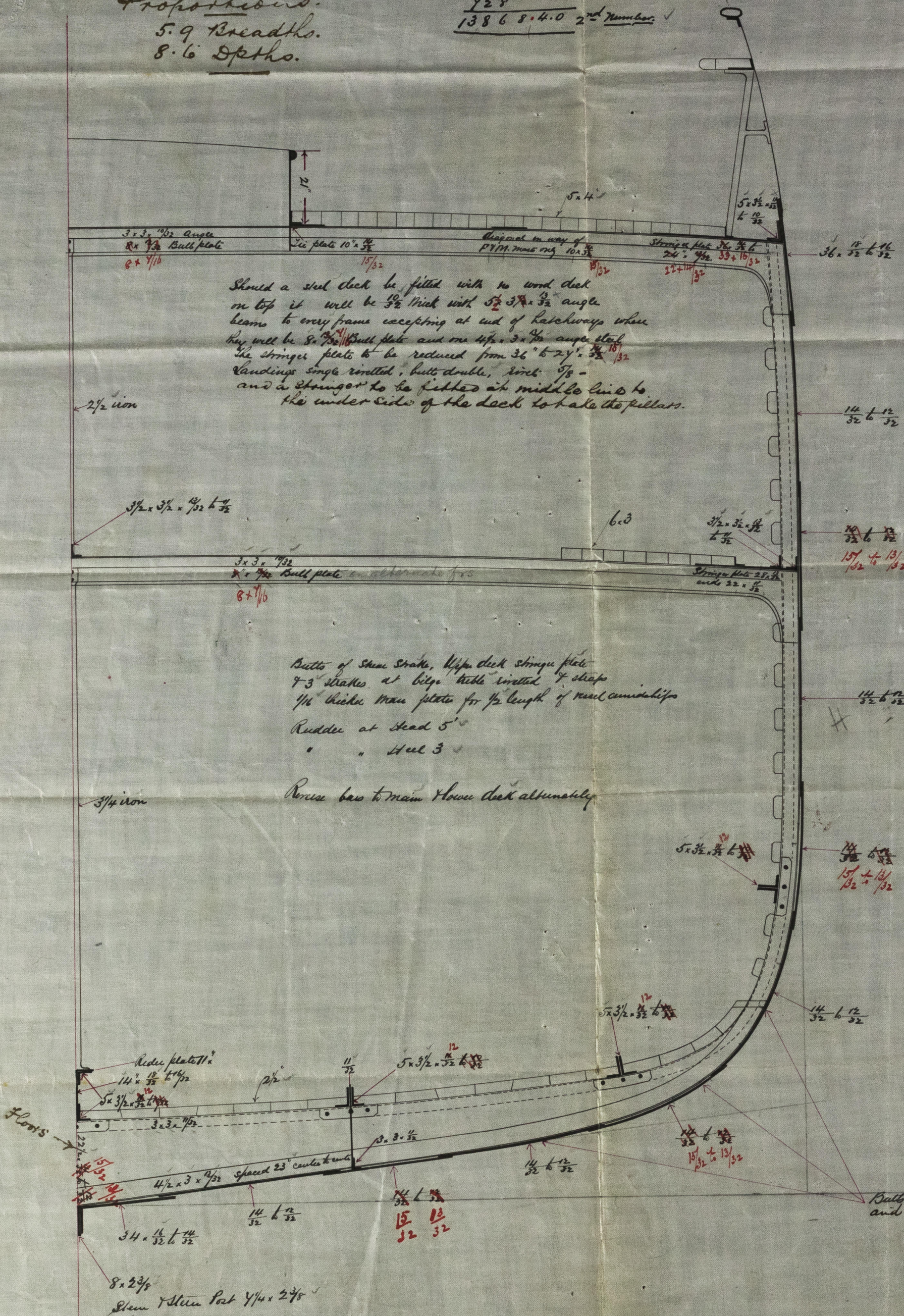
For flush decked vessel

No 14792

Equipment [^] ~~rusty rope, rope under 900 tons~~

2	Power buchers	on stock	25¢ cwt.
1	"	"	20 3/4 "
1	Stream	"	8 1/2 "
1	Kedge	"	4 1/4 "
1	"	"	2 1/4 "

270	fat	chain cable	1 10/16
45	"	stream chain	1 1/8
90	"	hawser	10'
90	"	rope	8"
90	"	"	5"



JOHN REID & CO
Ship Builders
PORT GLASGOW
23 Dec 80

18m
29/12/80