

Boiler for an Icebreaker of 500 T.H.P.

Strength of steel plates used in shell = \_\_\_\_\_ = 26' 28 Tons per square inch.

" " " " in end plates = \_\_\_\_\_ = 26' 28 "

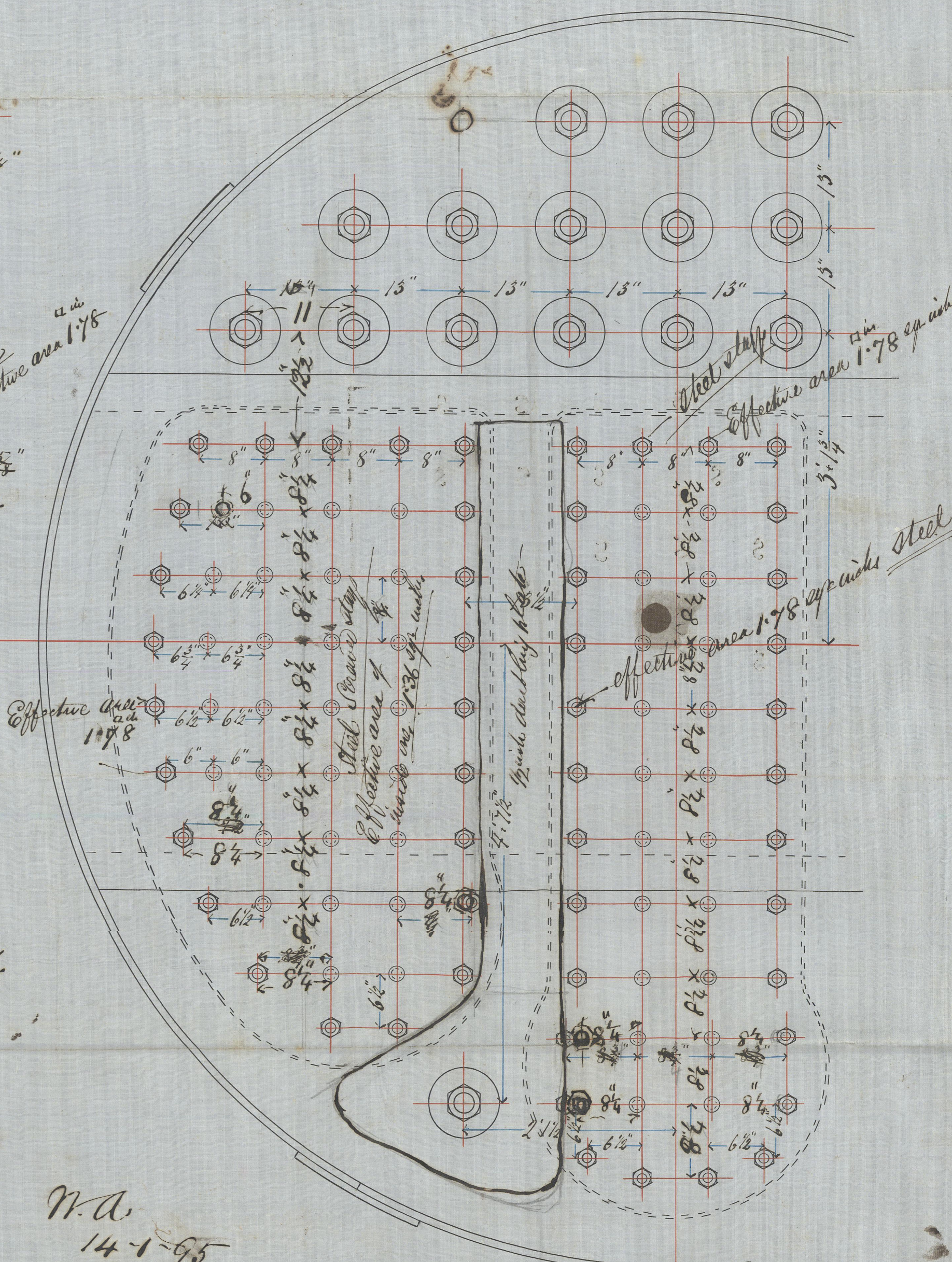
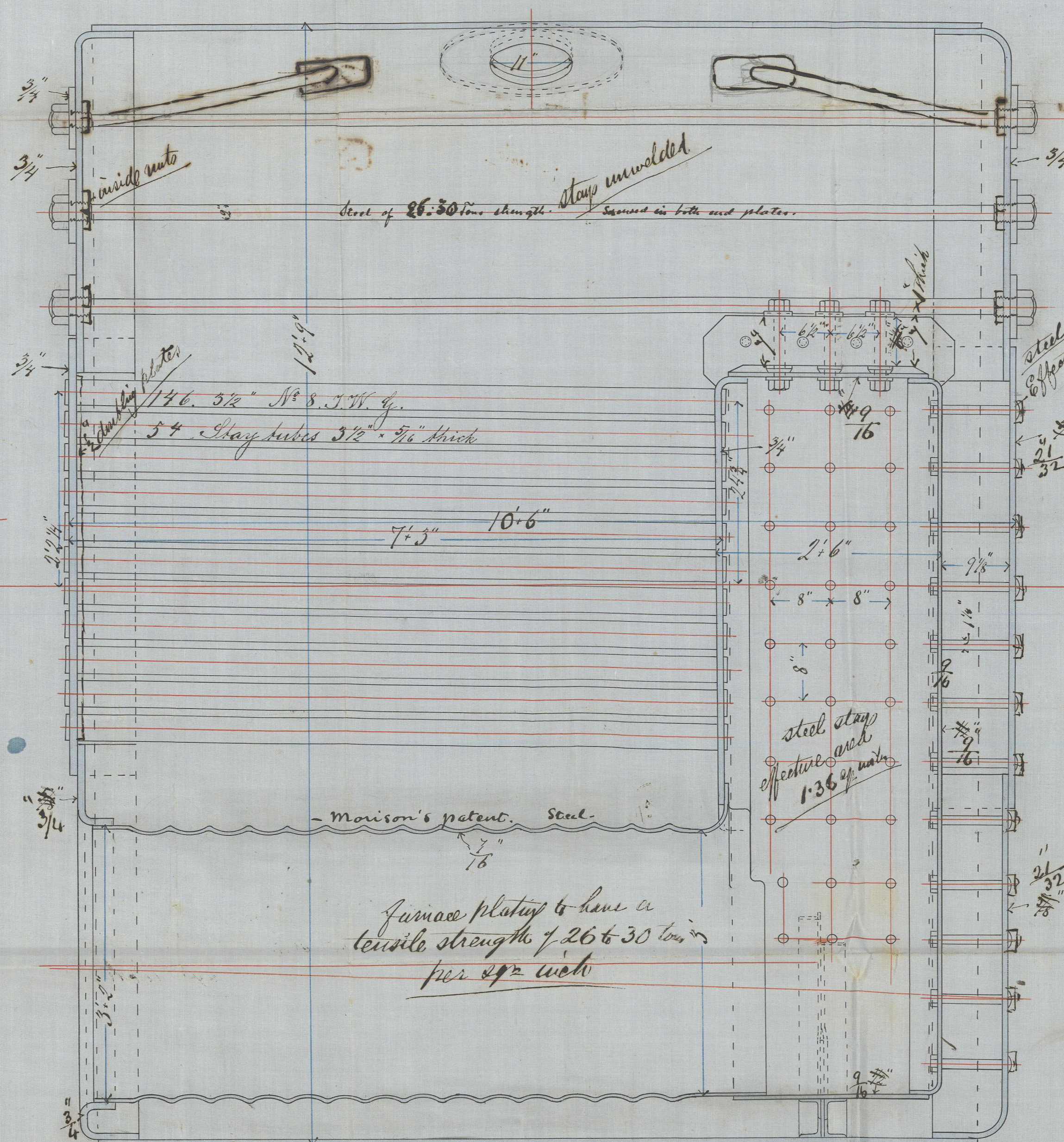
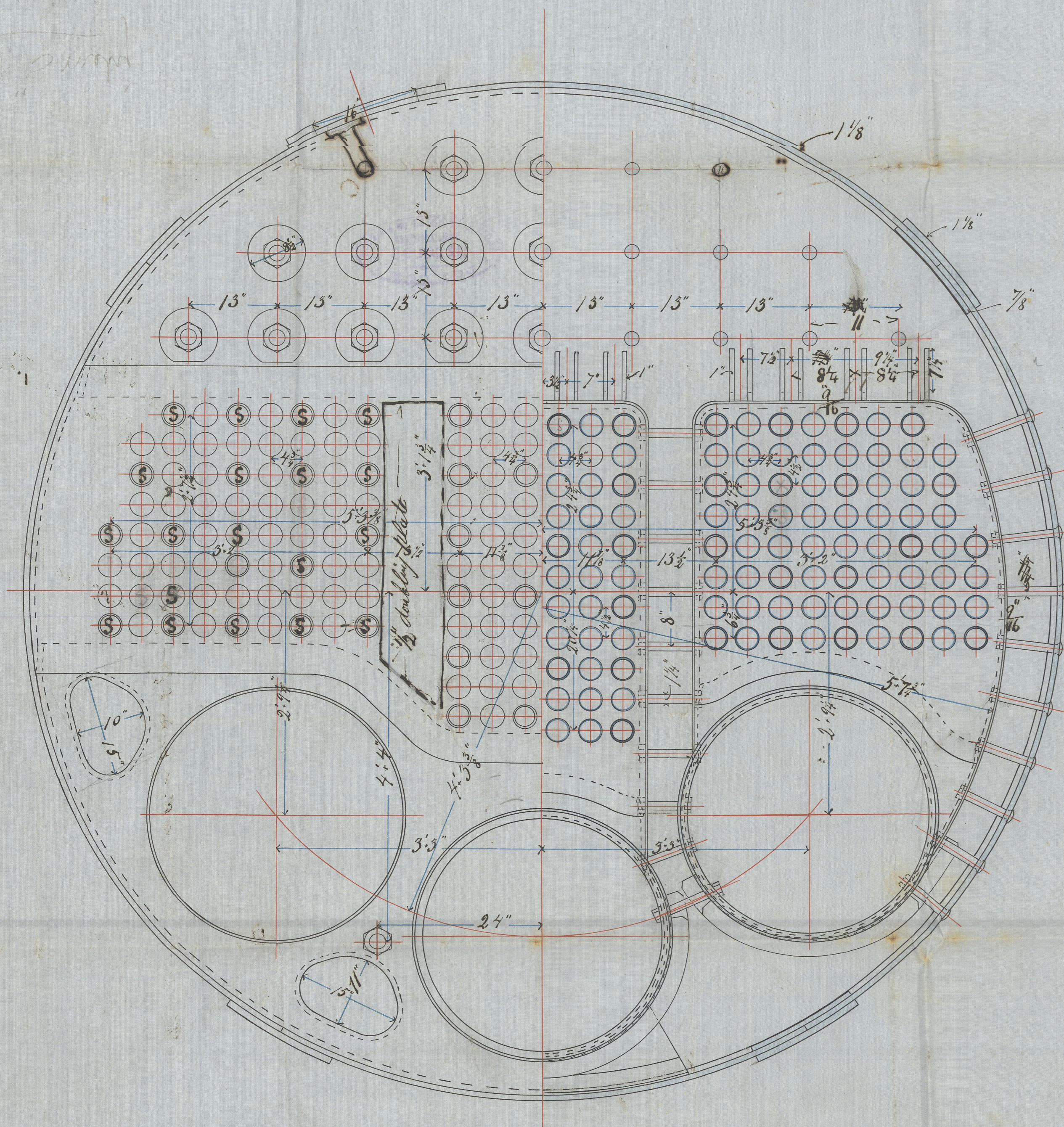
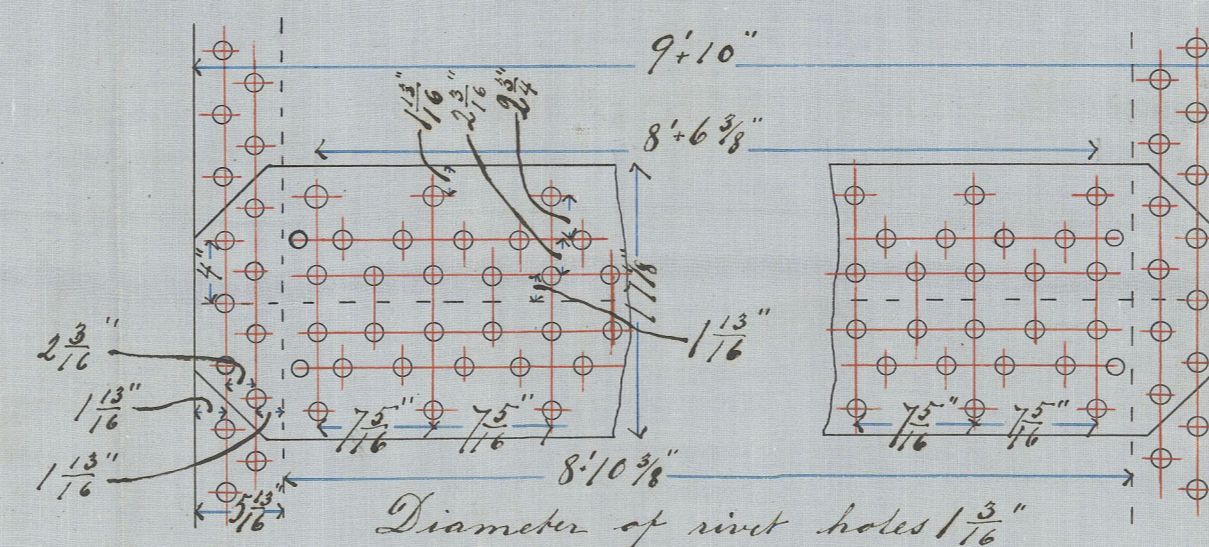
" " " " in combustion chambers = 24' 26 Tons " "

Working Pressure = 160 lbs per sq"

Lindholmen & Göteborg den 9<sup>th</sup> of Jan. 1895.

LINDHOLMENS VERKSTADS AKTIEBOLAG

Sven, Almqvist



Scale  $1'' = 1'$

W.A.  
14-1-95



Lat. 378.

2981 and 2982 are products of condensation

For interpretation of symbols = 24.50 per

*[Faint handwritten notes at the bottom of the page]*

50. 58-

59: 58 Jan. 1880

GOT 1115-0159