

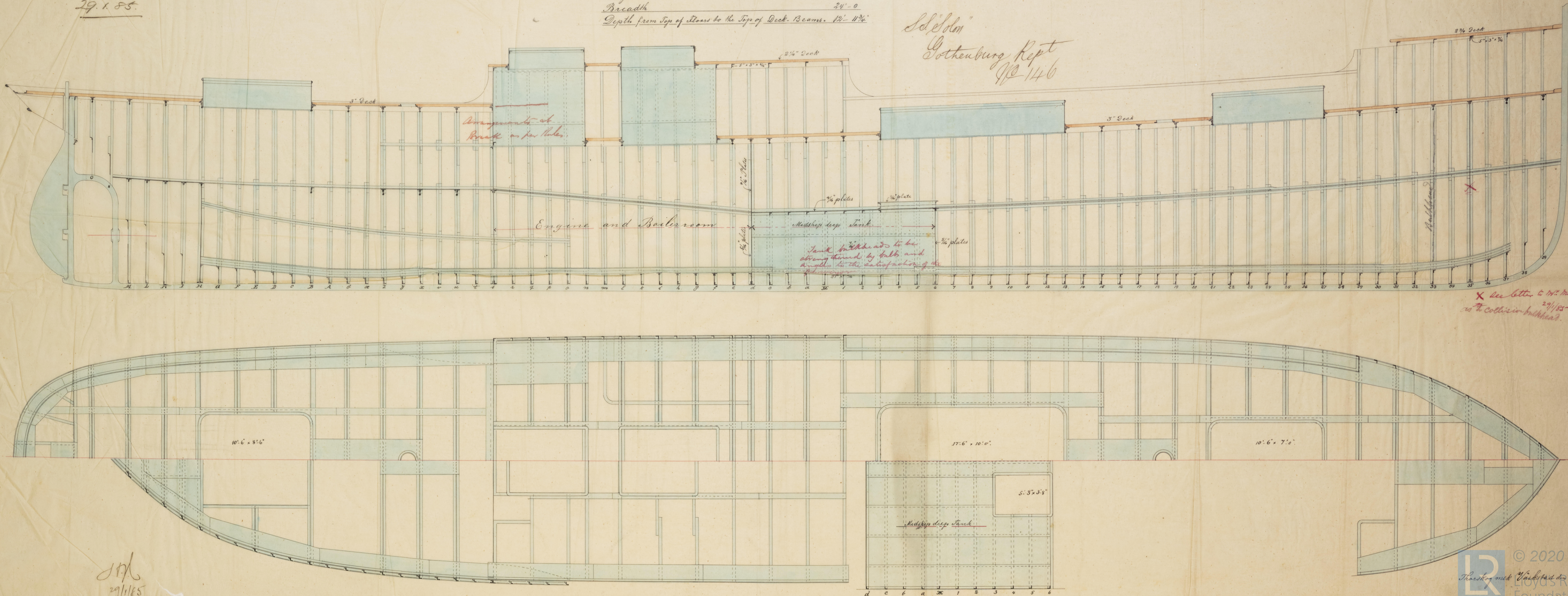
St. & Got.  
29.1.85.

# Longitudinal Sections and Plans of a Steam Vessel No. 70.

Scale  $\frac{1}{4}'' = 1'$

Length 141'-9"  
Breadth 24'-0"  
Depth from Top of Stems to the Top of Deck Beams. 12'-11 $\frac{3}{4}$ "

Solomon  
Gothenburg Rept  
No 146



X See letter to Mr. Milner.  
29/1/85  
re collision bulkhead.

St. & Got.  
29/1/85