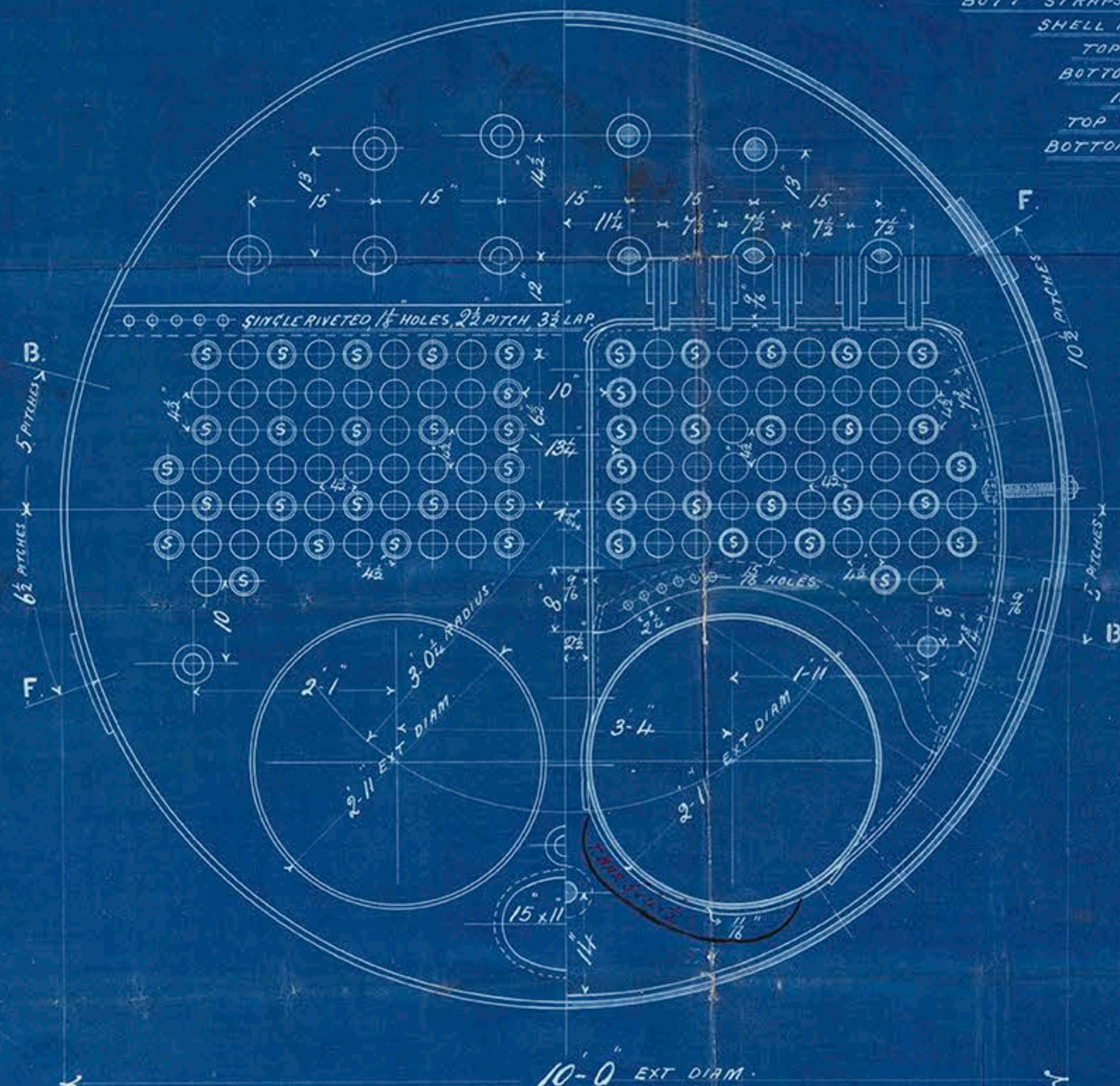


ALL PLATES AND TAYS AND RIVETS TO BE OF SIEMENS MARTIN STEEL. ALL RIVET HOLES TO BE DRILLED IN LONGITUDINAL SEAMS, ALL OTHERS TO BE PUNCHED OR DRILLED AS MAY BE CONVENIENT, THE DRILLING WILL BE DONE IN PLACE AFTER BENDING, AND ALL PUNCHED OR FLANGED PLATES TO BE ANNEALED AFTERWARDS, IF ANY HOLES ARE PUNCHED AFTER THE PLATES ARE ANNEALED THEY ARE TO BE RIMED OUT SO AS TO REMOVE AT LEAST  $\frac{1}{8}$  ALL ROUND, MEASURING FROM THE LARGEST PART OF THE PUNCHED HOLE. THE SCREW STAYS ARE  $1\frac{1}{2}$  IN EFFECTIVE DIAM. SCREWED INTO BOTH PLATES AND BUTTS IN EACH END. THE TUBES ARE IRON, THE STACK TUBES ARE  $\frac{3}{16}$  IN INTERNAL DIAM &  $\frac{3}{16}$  THICK EFFECTIVE. THE ORDINARY TUBES ARE  $\frac{3}{16}$  EXT DIAM AND NO. 8 L. S. 4" THICK. A MANHOLE IN SHELL  $16 \times 12$ " WITH SHORTER AXIS LONGITUDINALLY AND A DOUBLING PLATE  $3' 6" \times 2' 4" \times \frac{1}{16}$  THICK FASTENED AROUND IT. ALL STAYS OF STEEL EXCEPT THOSE JOINTED WHICH ARE OF IRON.

EARLES SHIPBUILDING  
ENGINEERING COMPANY  
LIMITED  
HULL  
17.5.93

1 1/8 HOLES, 6 7/8 PITCH.  
% OF STRENGTH OF JOINT  
PLATE = 82.72%  
RIVETS = 100% (LLOYD = 85%)

LENGTH OF FIRE BARS	
AREA OF FIRE GRATE	
DIAM OF TUBES OUTSIDE	$3\frac{1}{4}$ "
LENGTH OF TUBES OVER PLATES	6'-3"
NO OF TUBES	118
AREA THROUGH TUBES	6 SQ FT
SURFACE OF TUBES	616 sq ft
TOTAL HEATING SURFACE	792 sq ft
WORKING PRESSURE	160 LBS
DIAM OF SAFETY VALVE	



5 3/4" 3-9 5 3/4" 3-9 5 3/4"

29 3/2" 10.0 EXT DIAM.

STEEL STAYS 2 1/4" EFFECTIVE DIAM  
2 1/2" DIAM IN BODY.

6-3 OVER TUBE PLATES.

IRON ORDINARY TUBES 3 1/4" EXT DIAM x 11' 8" LSG THICK  
SWELLED 1/8" FRONT ENDS.

IRON STAY TUBES 3 1/4" EXT DIAM x 7/8" THICK EFFECTIVE  
SCREWED AT ENDS TO 3 3/4" & 3 1/2" DIAM.

24 3/2" 2" JOINTED IRON STAYS  
1 1/2" PINS

15" HOLES

2-11" EXT DIAM.

FURNACES WELDED  
LONGITUDINALLY.

2" JOINTED IRON STAYS  
1 1/2" PINS

10 3/4" EXT DIAM

2-3 INT

8"

1/2" STEEL SCREW STAYS  
10 THREADS PER INCH

7" x 7"

RIVETING IN COMBUSTION  
CHAMBER, 5/16" HOLES, 2 1/4" PITCH

27 3/2" 3 3/4" 4 3/4" 4 3/4"

9-6" TOTAL LENGTH

\*NOTE!  
THIS PLATE FOR N<sup>o</sup> 373 & 4  
TO BE  $\frac{3}{16}$ " THICK FITTED  
WITH DOUBLING PLATE  
RIVETED ON INSIDE  $10\frac{1}{2}$ " THICK  
FOR N<sup>o</sup> 375 & 6 THIS PLATE  
TO BE  $\frac{13}{16}$ " THICK WITHOUT  
DOUBLING.

$$\begin{array}{r} 14.593 \\ \hline 14.3393 \end{array}$$

№ 373-4-556





Laurel

No 373

No 591  
Lloyd's Test  
320 lbs  
5.7.93 TRB

No 374

No 595  
Lloyd's Test  
320 lbs  
12.7.93 TRB

No 375

No 598  
Lloyd's Test  
320 lbs - JI  
24.7.93

No 376

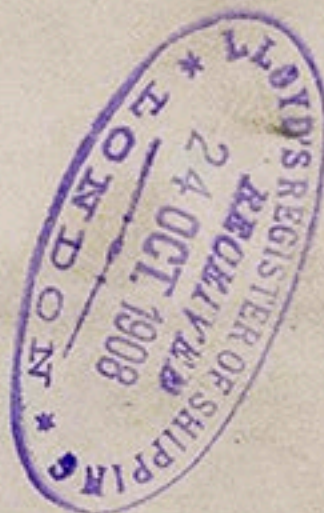
No 599  
Lloyd's Test  
320 lbs -  
JI  
28.7.93

Dec Hull Report No: 8714

Don - - - 8726

Dart - - - 8736

Derwent - - - 8742



© 2018

Lloyd's Register  
Foundation

GM5358/134