

EQUIPMENT

1 ANCHOR 4½ CWTs EX-STOCK
 1 DO. 4 DO. DO.
 1 DO. 2½ DO. DO.
 75 FMS 1½ S. CHAIN.
 60 FMS 5½ HAWSER.
 60 FMS 3½ WARP.

Nº 2.

S.S. KING EDGBERT.

MIDSHIP SECTION.

STEEL SCREW TRAWLER.

TO CLASS 100 AT LLOYDS.

SCALE ½" = ONE FOOT.

DIMENSIONS

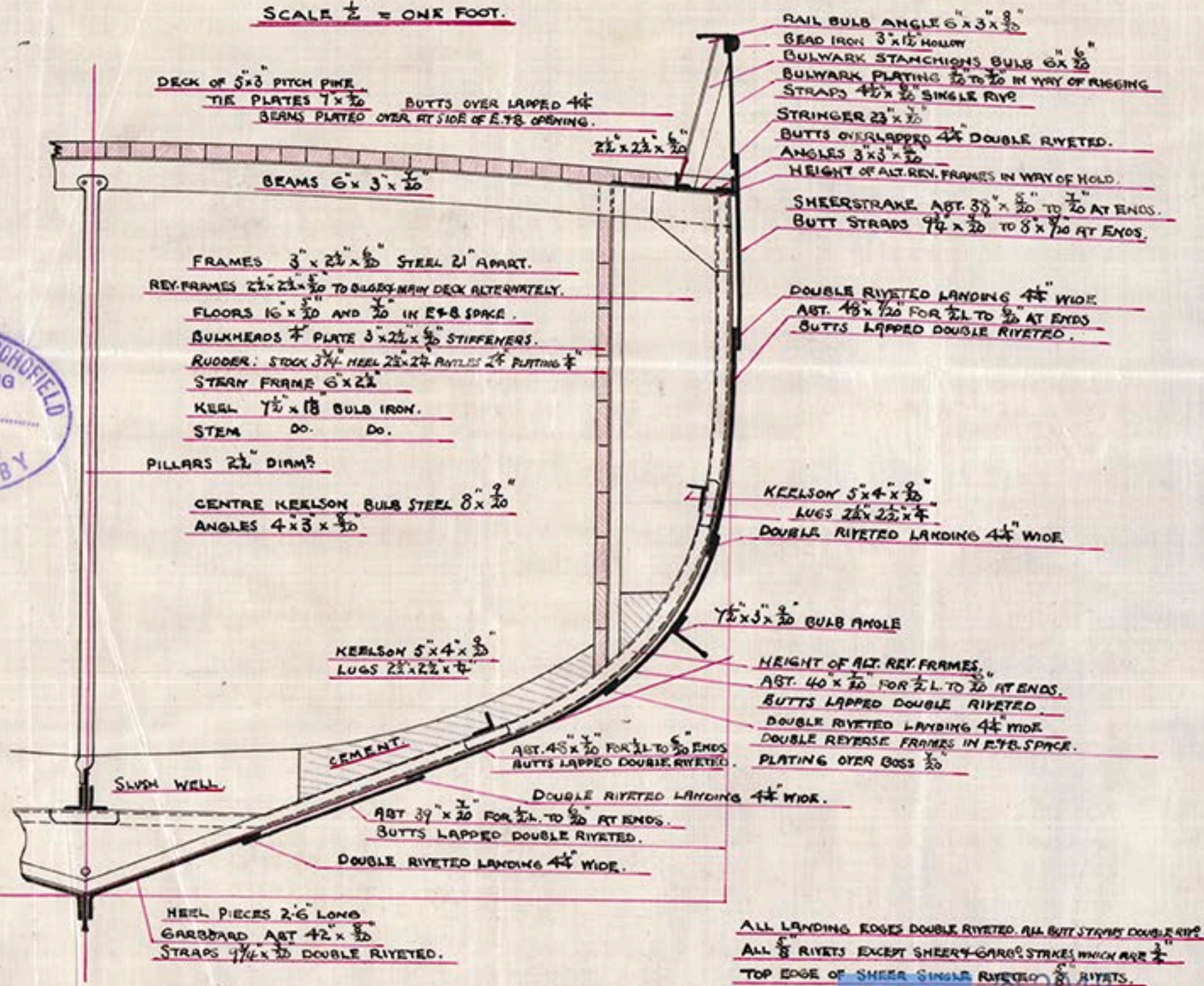
HALF MOULDED BREADTH	10.41
DEPTH FROM TOP OF KEEL	12.08
HALF MIDSHIP GIRTH	17.91
LENGTH AS PER RULE	104.00

NUMERALS.

10.41 + 12.08 + 17.91	= 40.4 THWAIRSHIP.
10.41 + 12.08 + 17.91 x 104	= 4201.6 LONGS

PROPORTIONS

104 ÷ 12.08	= 8.60
104 ÷ 20.82	= 4.94.

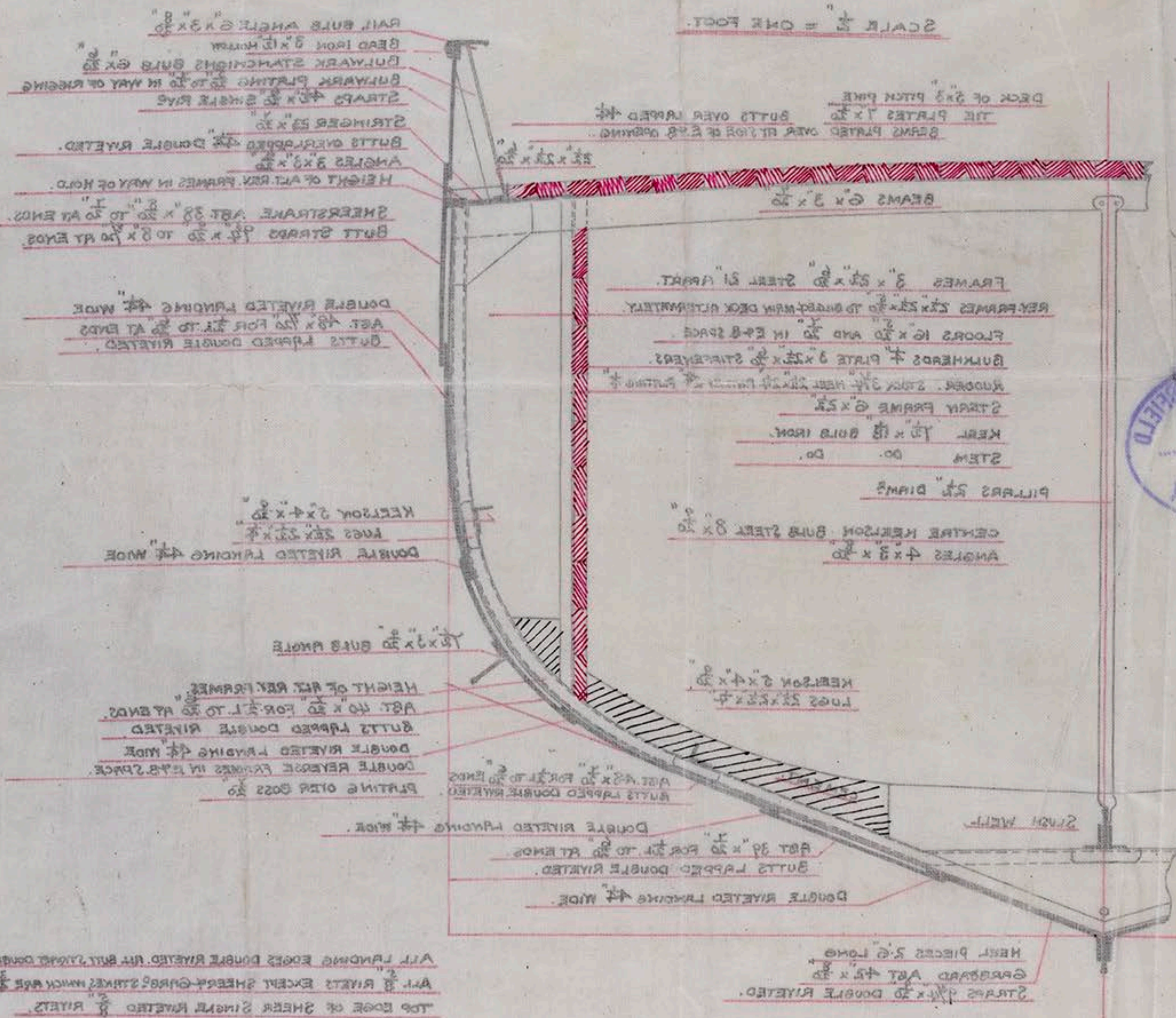


EQUIPMENT —

1 ANCHOR 45 CWTs EX-1000	
1 DO. 4 DO. DO.	
1 DO. 50 DO. DO.	
15 FMS 1/2" GL CHAIN	
60 FMS 3/4" HAWPER	
60 FMS 3/2" WARP	

TO CLASS 100 A1 LLOYDS.

SCALE $\frac{1}{2}$ = ONE FOOT.



SHIP & FLOATING

TRACING NO. _____

DATE _____

DOCK BUILDERS LTD

DIMENSIONS	
10.51	HAIR MOUNTED & READY
13.08	DEPTH FROM TOP OF KEEL
17.51	HAIR MOUNTING @ RTH
104.00	DEPTH AT DEEP RAIL

NUMERALS

$10 \text{ A} + 12 \text{ B} + 15 \text{ C} = 10 \text{ A} + 12 \text{ B} + 15 \text{ C}$

$10 \text{ A} + 12 \text{ B} + 15 \text{ C} = 10 \text{ A} + 12 \text{ B} + 15 \text{ C}$

$$\begin{aligned} \text{02-8} &= 80.1 \div 401 \\ \text{11-4} &= 15.03 \div 401 \end{aligned}$$