

PARTICULARS	1 BOILER.	2 BOILERS.
HEATING SURFACE TUBES.	1760	3520
" FURNACES	137	374
" COMB. CHAM. SIDES	133	266
" BACKS	80	160
" BACK TUBE PLATE	33.5	67
" TOTAL	2143.5	4287
GRATE AREA		
RATIO HEATING SURFACE		
" GRATE AREA		
" AREA THRO' TUBES.	13.1	26.2
WEIGHT OF BOILER.		
" WATER.		

SHELL 1 1/2" THICK 28 TONS MIN. TENSILE STRENGTH.

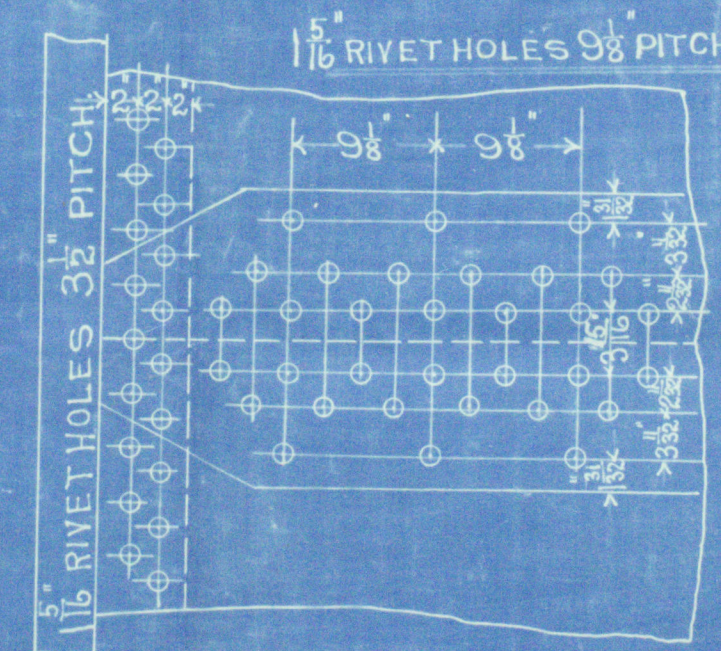
OUTER BUTT 1 1/2" THICK

INNER 1 1/2" THICK

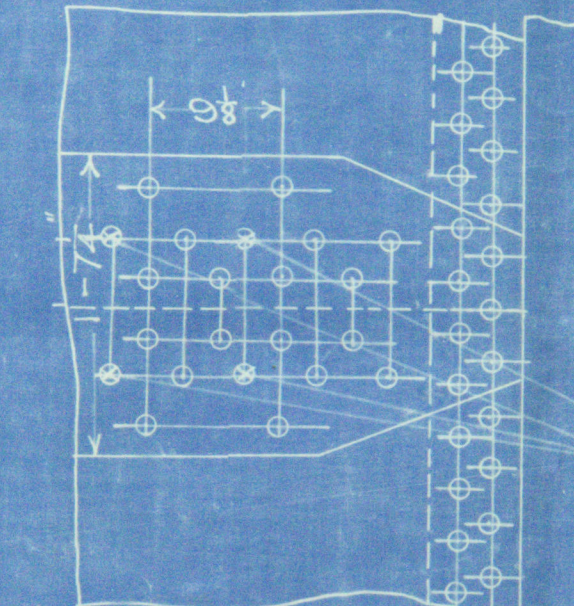
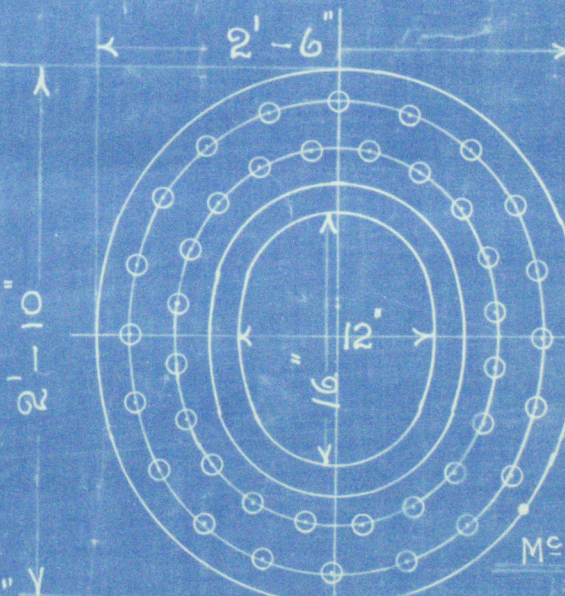
MAXIMUM TENSILE STRENGTH
= 32 TONS.

PLATE SECTION = 85.6% RIVET SECTION = 83.2%

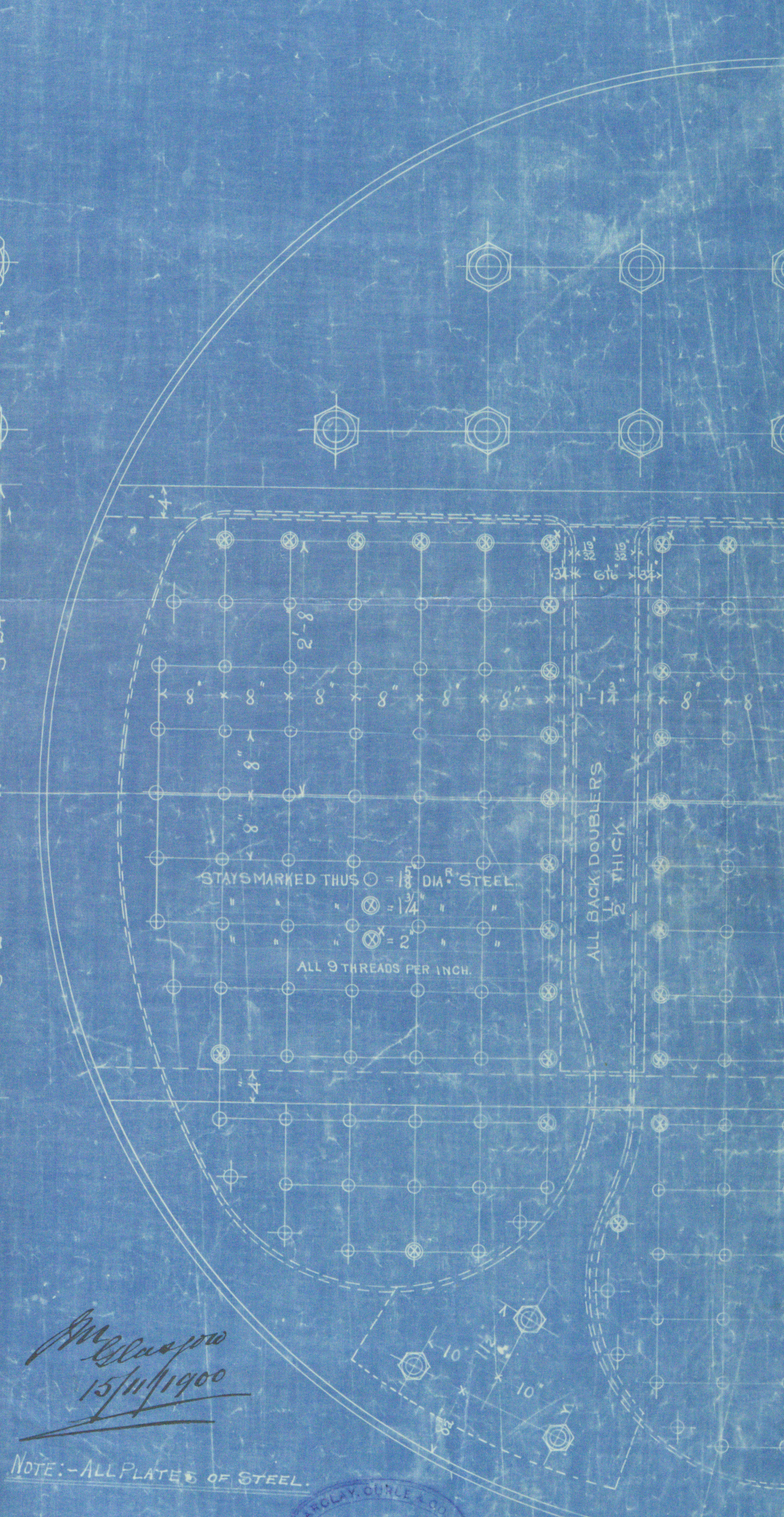
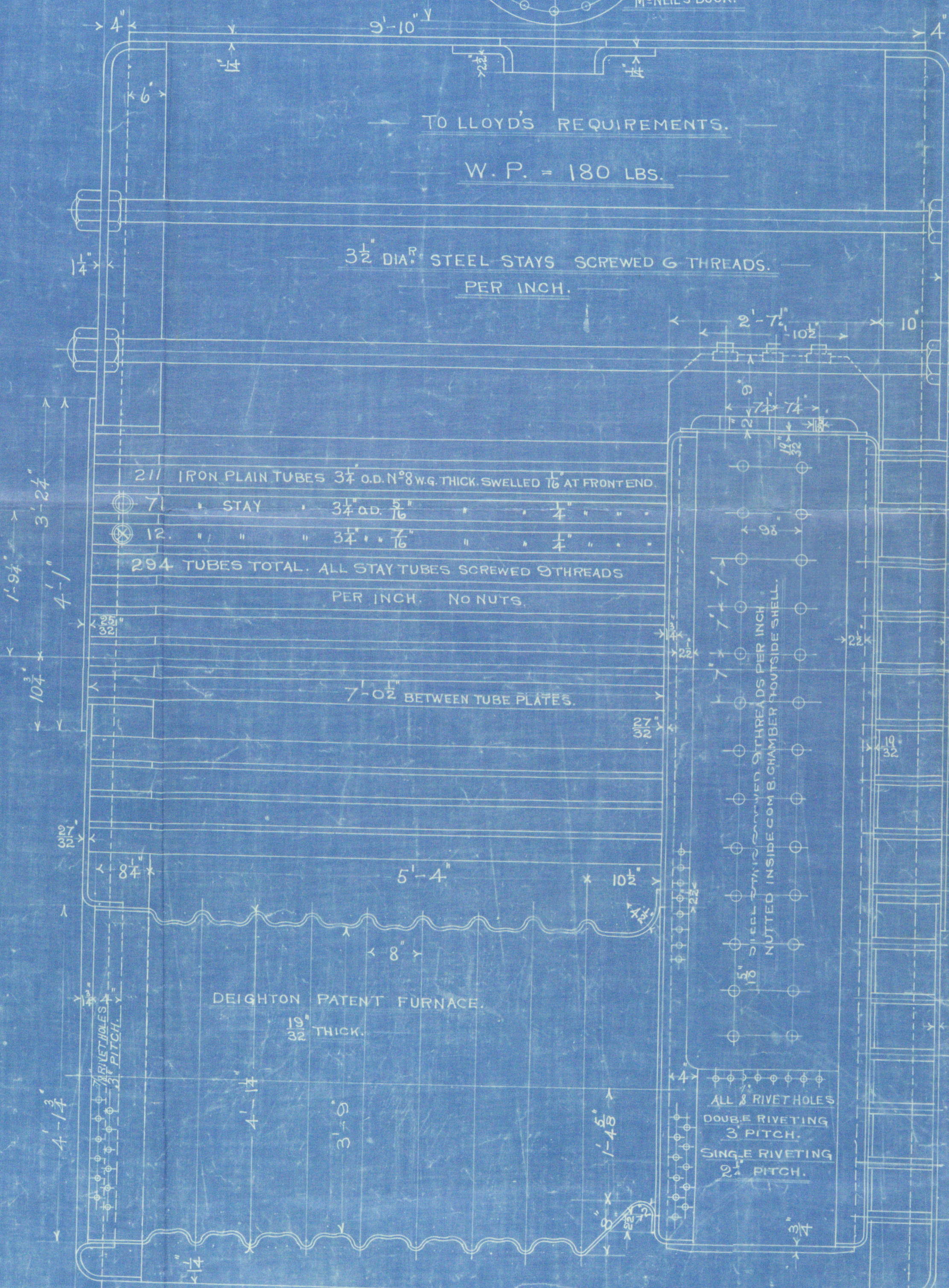
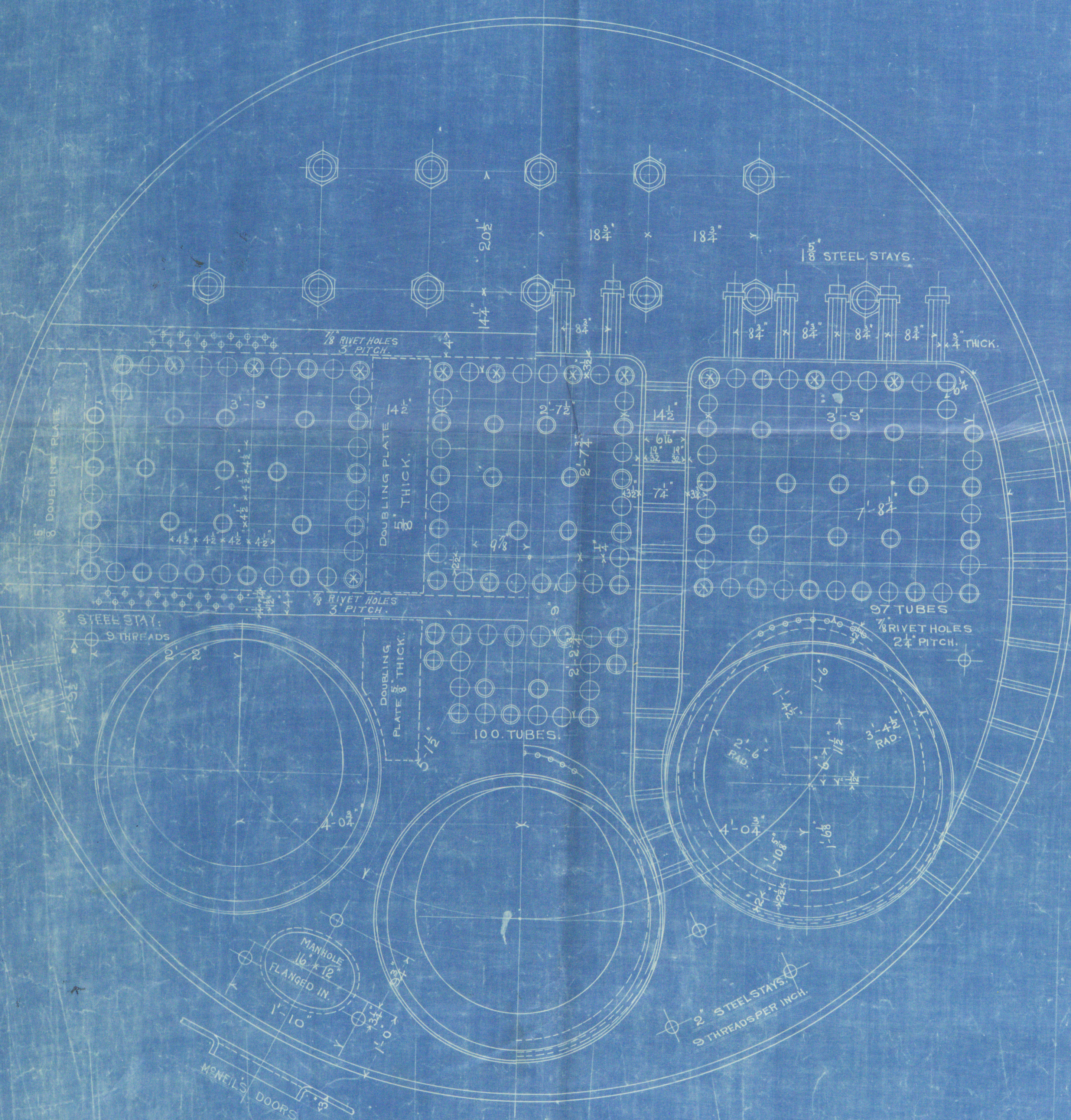
STRENGTH OF JOINT = 183 LBS. PER SQ. INCH.



POSITION OF MAN HOLE
TO BE FIXED LATER.



COMB. CHAMBER STAYS TO PASS
THROUGH THESE HOLES.



2-OFF.

L.N^o5. BOILER

SCALE 1/4" = 1' FOOT

Lloyd's Register
of Shipping

S.S. "Roman"

Macfie & Thomson

Ship No

Lidgerwood Engines No

Wanclayburle & Co Boilers

12th - L No 3-

Slip no. 180-89



S.S. Roman
Lidgerwood No 94

GLS292-0047



© 2019

Lloyd's Register
Foundation