

waited till 11
 5.5.99
 paid. for engine
 returned 2.2
 2018 at 11/10/99
 76.10.99

MIDSHIP SECTION.

S.S. N^o 22.

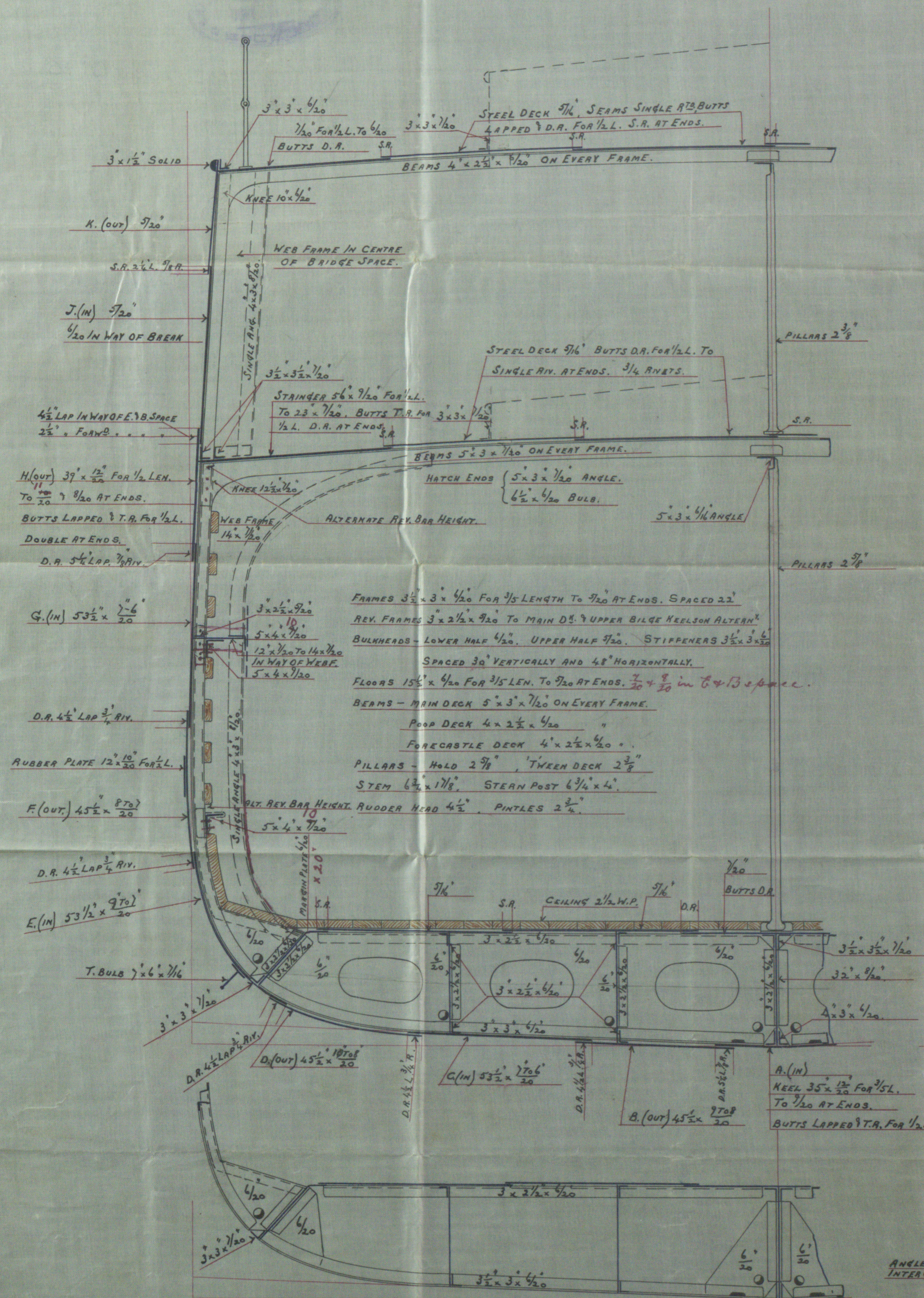
TO CLASS 100 A1 AT LLOYDS.

LENGTH B.P. 185'-0"; BREADTH M.O. 28'-0"; DEPTH M.O. 14'-0".

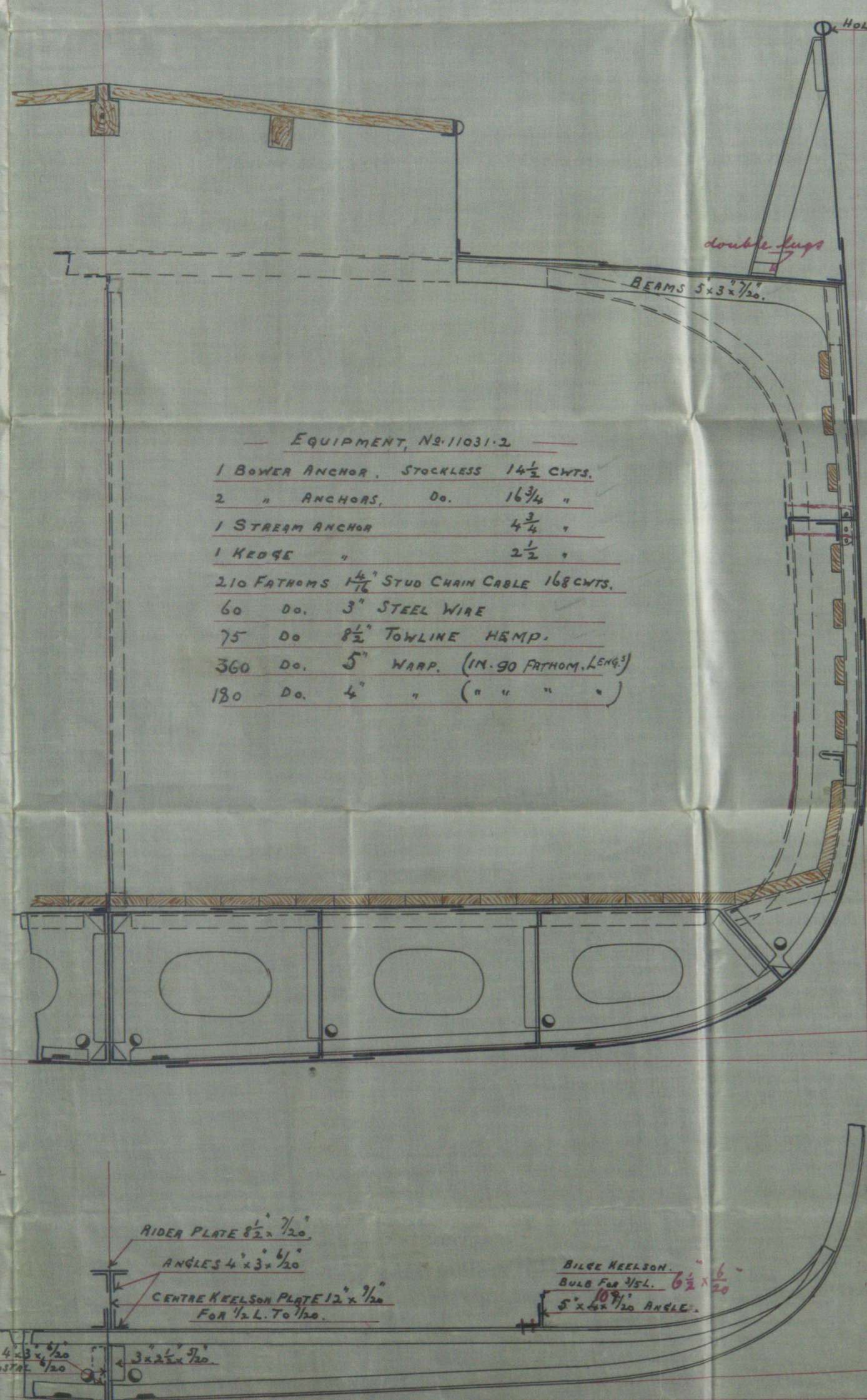
SCALE 1/2 INCH = 1 FOOT.

NUMERALS.	
1/2 GIRTH	26.02
1/2 BREADTH	14.00
DEPTH	14.58
	54.60 1ST. NUMERAL.
	183.88
	43.68
	16.38
	43.68
	54.6
	10039.848 2ND NUMERAL.
	991.371
	11031.219 EQUIV. NUMERAL.

PROPORTIONS	
BREADTH TO LENGTH	6.56
DEPTH TO LENGTH	12.61
LENGTH OF POOP	119.16
LENGTH OF FORECASTLE	26.22



SECTION IN DOUBLE BOTTOM ON ALTERNATE FRAMES.



EQUIPMENT, N ^o 11031.2	
1 BOWER ANCHOR	STOCKLESS 14 1/2 CWTs.
2 " ANCHORS	Do. 16 3/4 "
1 STREAM ANCHOR	4 1/2 "
1 KEDGE	2 1/2 "
210 FATHOMS	1 1/2" STUD CHAIN CABLE 168 CWTs.
60 Do.	3" STEEL WIRE
75 Do	8 1/2" TOWLINE H&M.P.
360 Do.	5" WARP. (IN 90 FATHOM LENGTH)
180 Do.	4" " " " "

RIVETING.
 FROM LOWER EDGE OF SHEERSTAKE
 TO GARBBOARD, ALL BUTTS LAPPED &
 TREBLE RIVETED FOR 1/2 LENGTH.
 ALL OUTSIDE STAKES TREBLE
 RIVETED WHERE OVER 40" AND NOT
 EXCEEDING 46". ALL INSIDE STAKES
 WHERE OVER 48" AND NOT EXCEEDING
 54" TO BE TREBLE RIVETED 1/2 LAP
 3/4 RIVETS.
 BUTTS OF CENTRE AND MARGIN PLATE IN
 DOUBLE BOTTOM LAPPED & DOUBLE RIVETED.

SECTION IN WAY OF ORDINARY FLOORS.

Midship Section

NO 22

Lrine Sh. Coy.
S. S. Achilles

Glasgow Rht no 18165

P.P. 01. 05

BRIDGE
DEPTH TO LENGTH 12.41

GLS 289-0116

LENGTH OF POOP

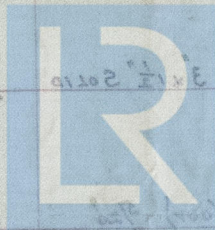
LENGTH OF FORECASTLE 24.32

act x E x E

BUTTS B.R.

WHE TO PLAC

WEB FRAME IN CENTRE



© 2019

Lloyd's Register
Foundation