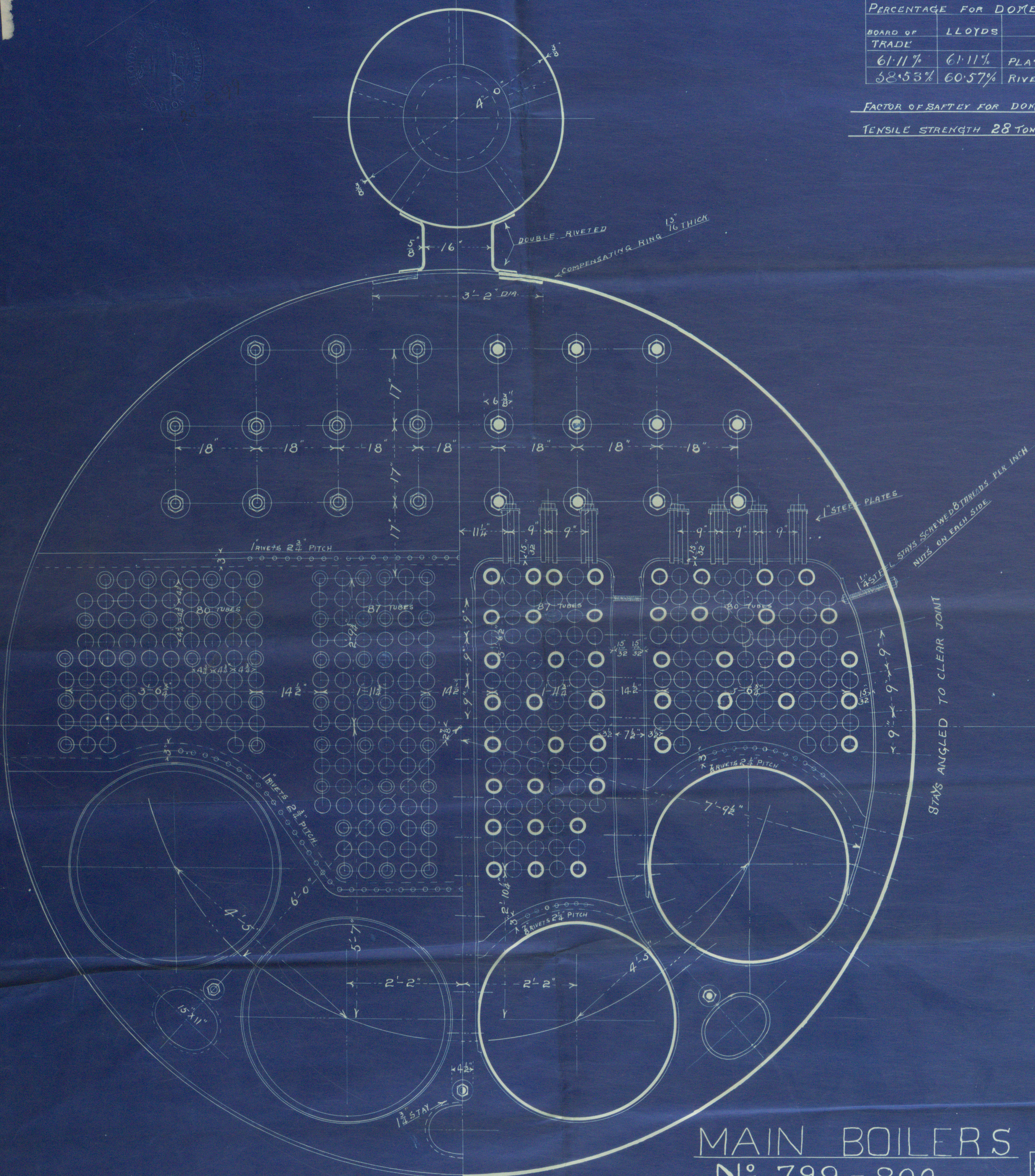


PERCENTAGE FOR DOME		
BOARD OF	LLOYDS	
TRADE		
61.11%	61.11%	PLATE
58.53%	60.57%	RIVETS

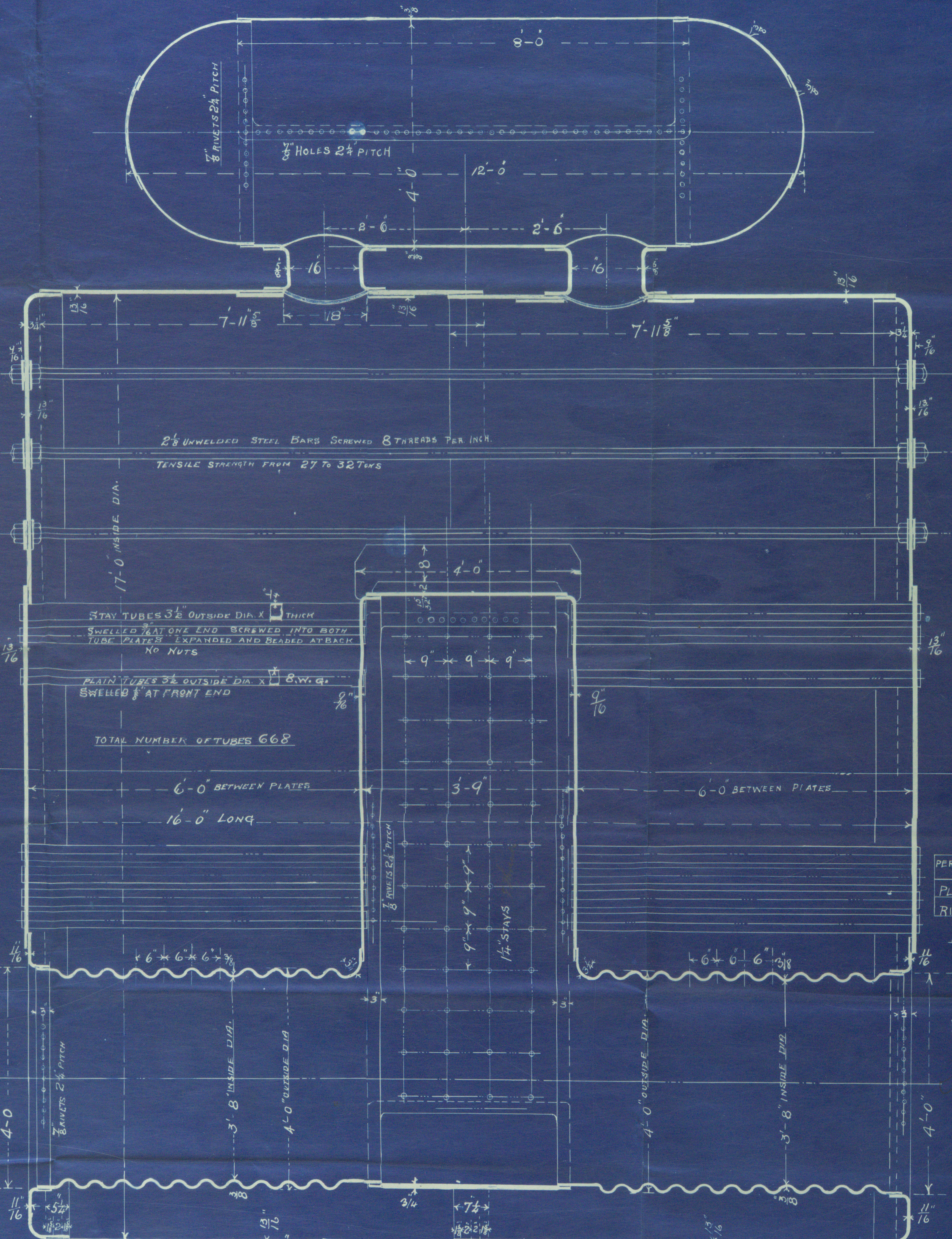
FACTOR OF SAFETY FOR DOME 5.7
TENSILE STRENGTH 28 TONS



MAIN BOILERS
N° 799-800
SCALE 1"=1FOOT

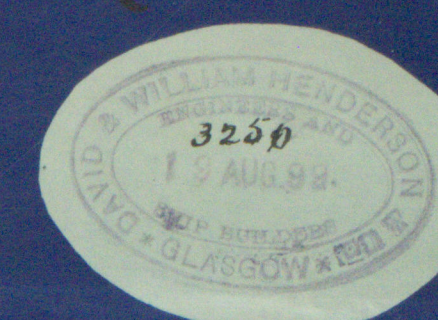
PERCENT	BOARD
PLATE	61.11%
RIVETS	58.53%

J. R.
W. S. W. G.
J. R.



PERCENT	BOARD OF
PLATE	76.38%
RIVETS	79.66%

ALL HOLES DRILLED IN PLACE AFTER BENDING.
1 1/2" STEEL SHELL PLATES
TENSILE STRENGTH 28 TONS
Factor 4.6
WORKING PRESSURE 80 LBS.
TESTED TO 160 LBS.



PERCENT	BOARD
PLATE	61.11%
RIVETS	58.53%



2019
Lloyds Register
Foundation

D & W. Henderson & Co
Marine Boilers 799/800
Falmouth Castle
Duart Castle



S.S. "Ocano"
(ex "Falmouth Castle")

Glasgow Report No. 18085



GLS288-0162



© 2019

Lloyd's Register
Foundation