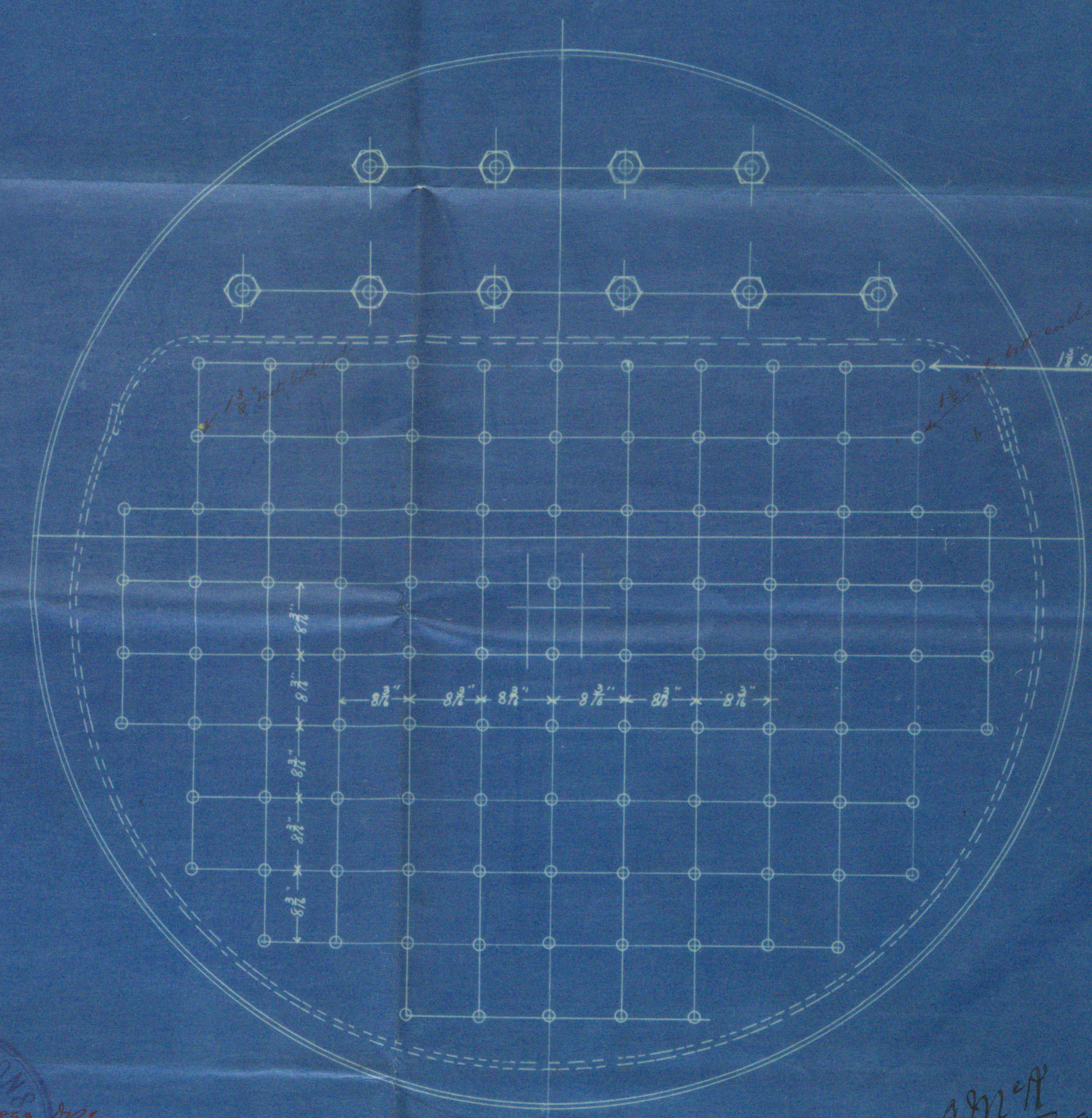
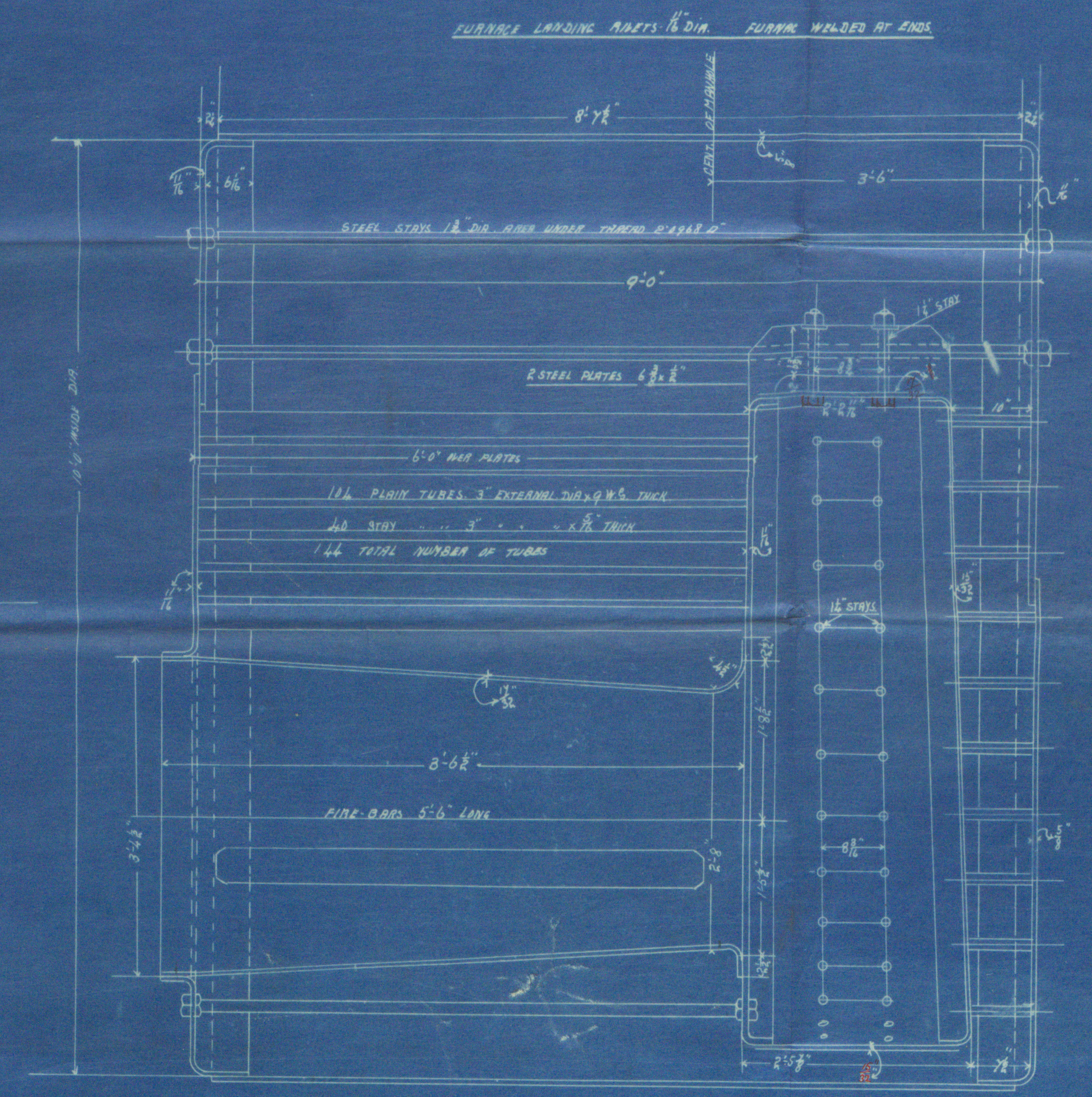
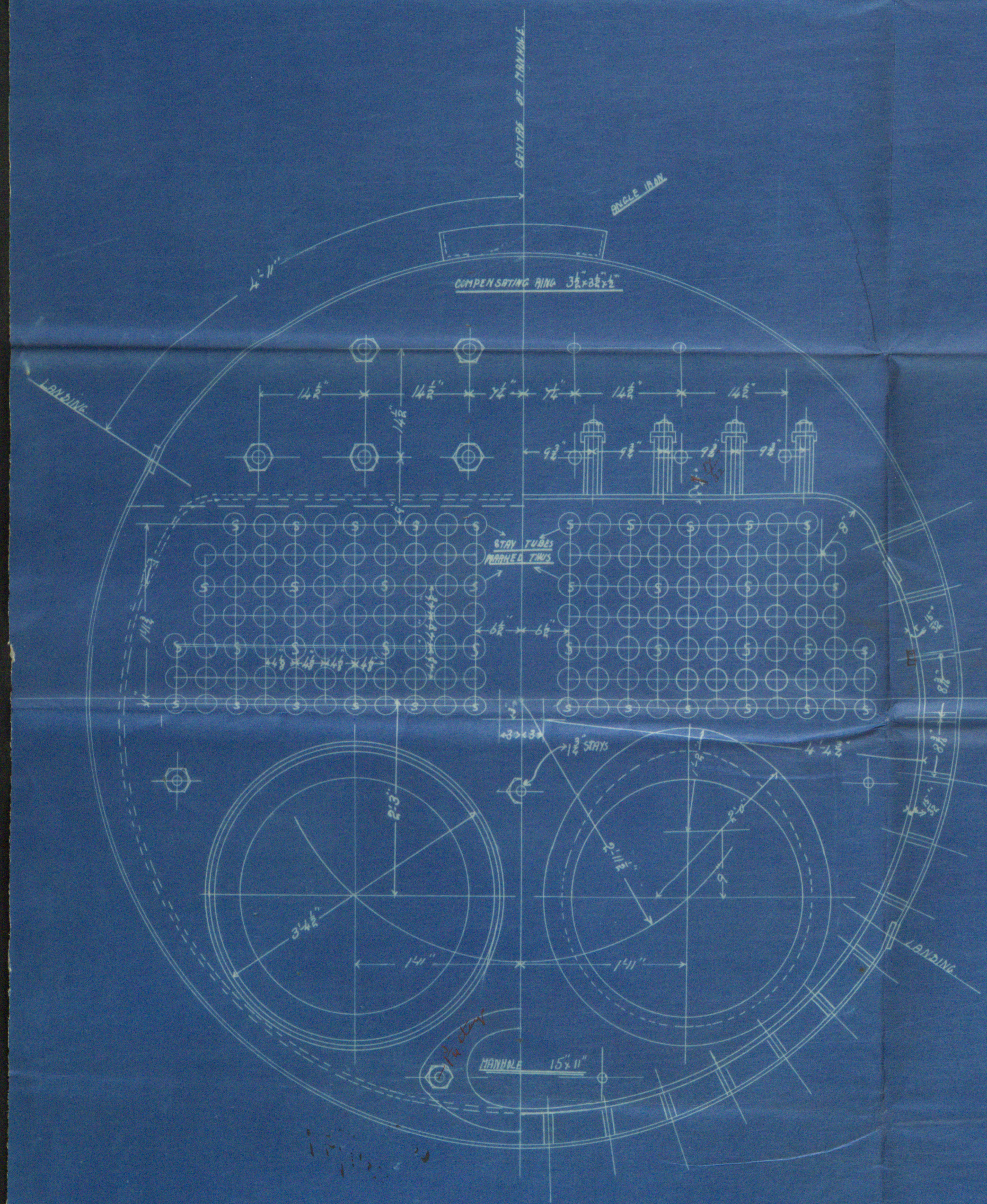
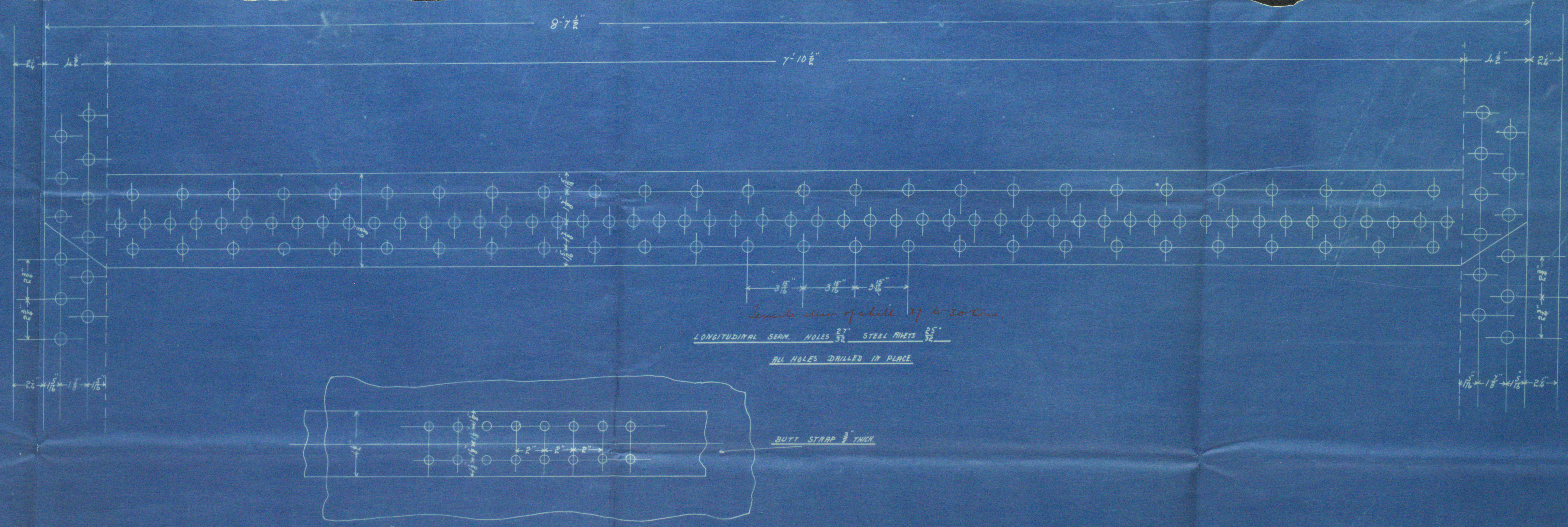


20/11/99
 LLOYD'S REGISTER
 LONDON

CONCENTRIC STEEL RINGS 1/2" DRILLED IN PLACE
 STEEL RINGS 1/2"



Steel

DONKEY BOILER

Nº 385

Scale 1" = 1 foot

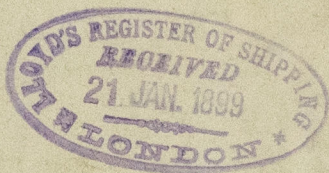
LLOYD'S REGISTER
 LONDON
 17th January 1899
 LONDON

20/11/99

20/11/99

To Lloyd's requirements for a working pressure
 of 100 lbs. per sq. in. tested to 200 lbs. per sq. in.

LLOYD'S REGISTER
 LONDON
 17th January 1899
 LONDON



A. Stephen & Sons
Donkey Bolt No 385-

ss. "Clan MacLachlan"

Glasgow Report No. 17862



© 2019

Lloyd's Register
Foundation