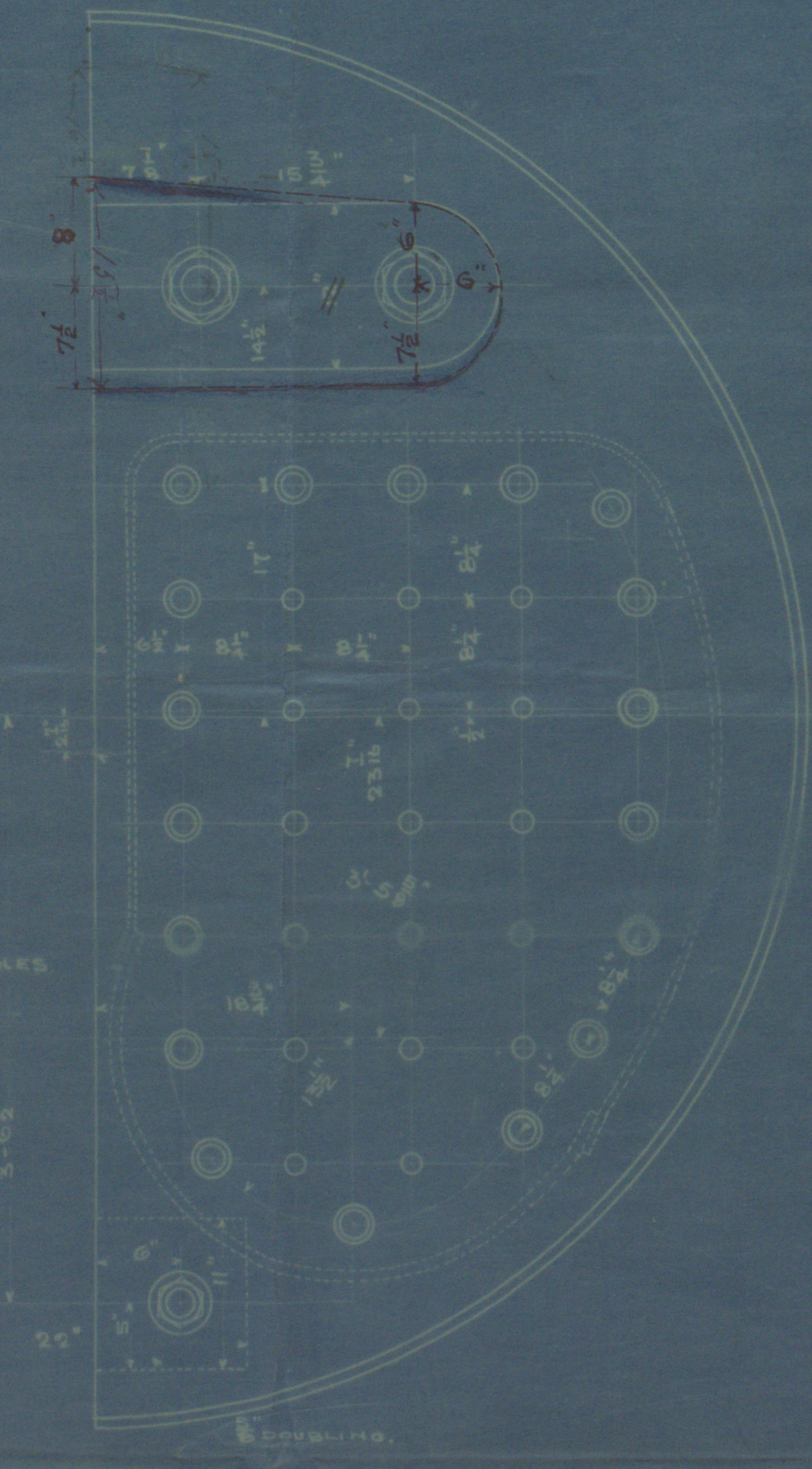
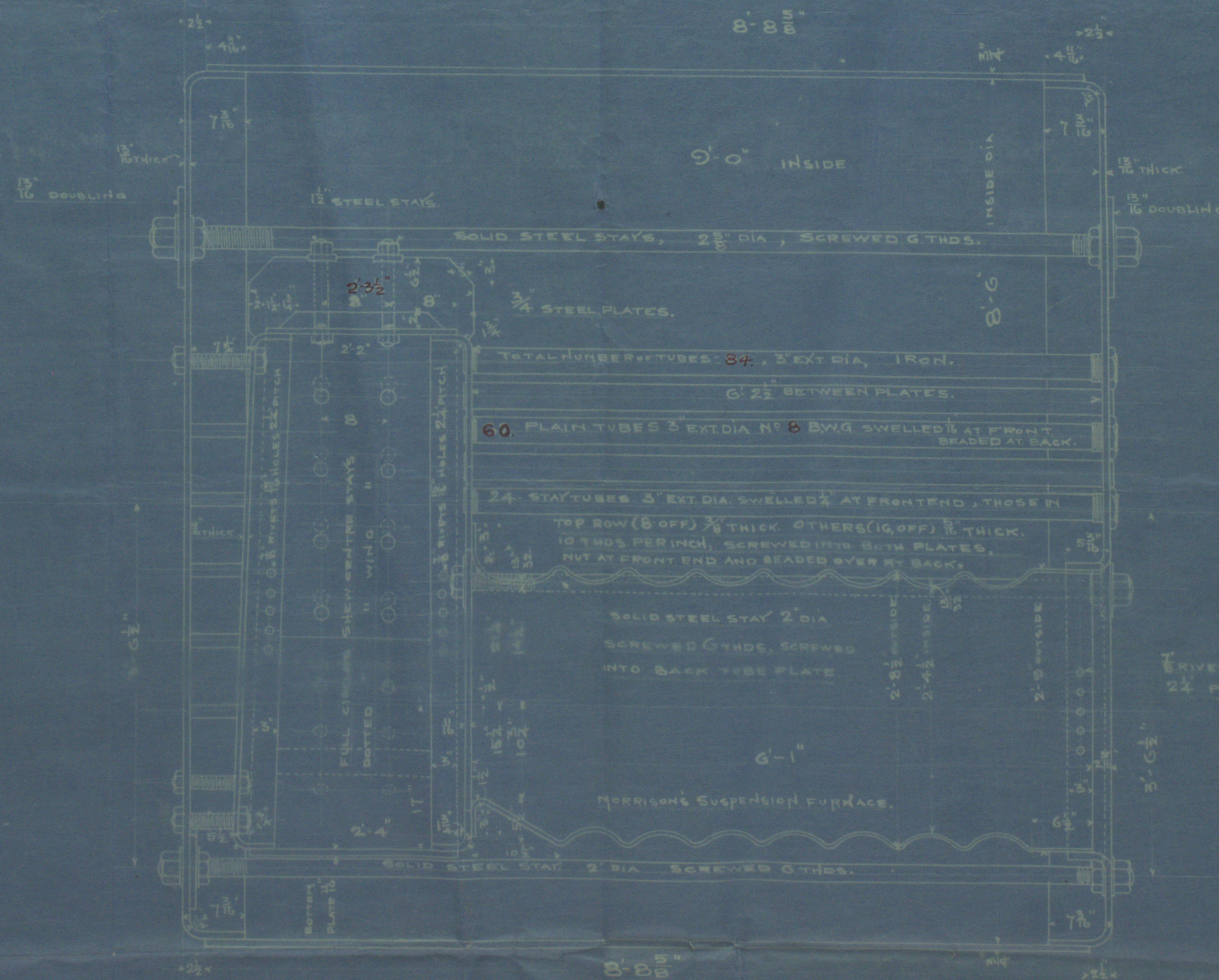
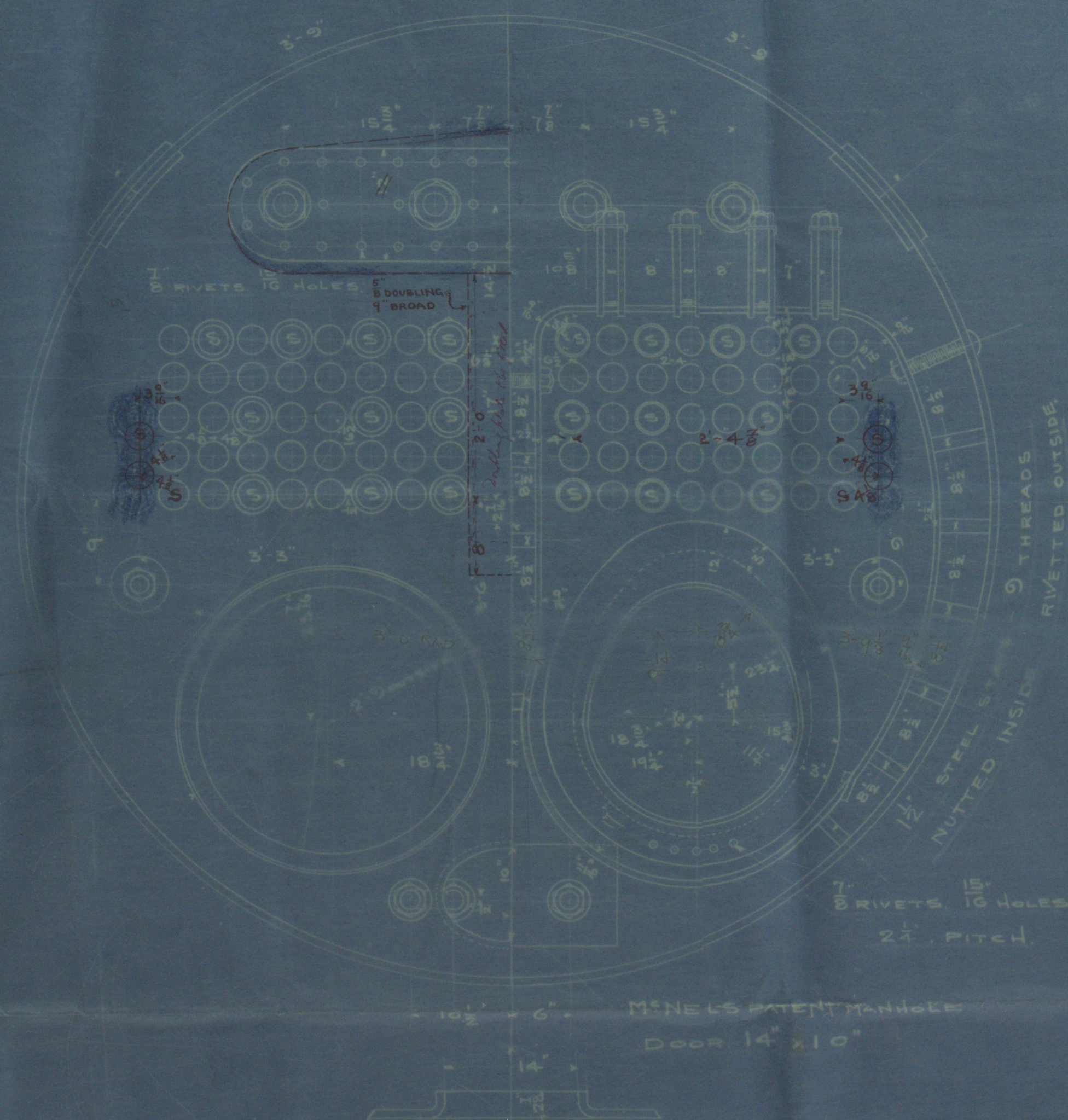


13 JAN 1900

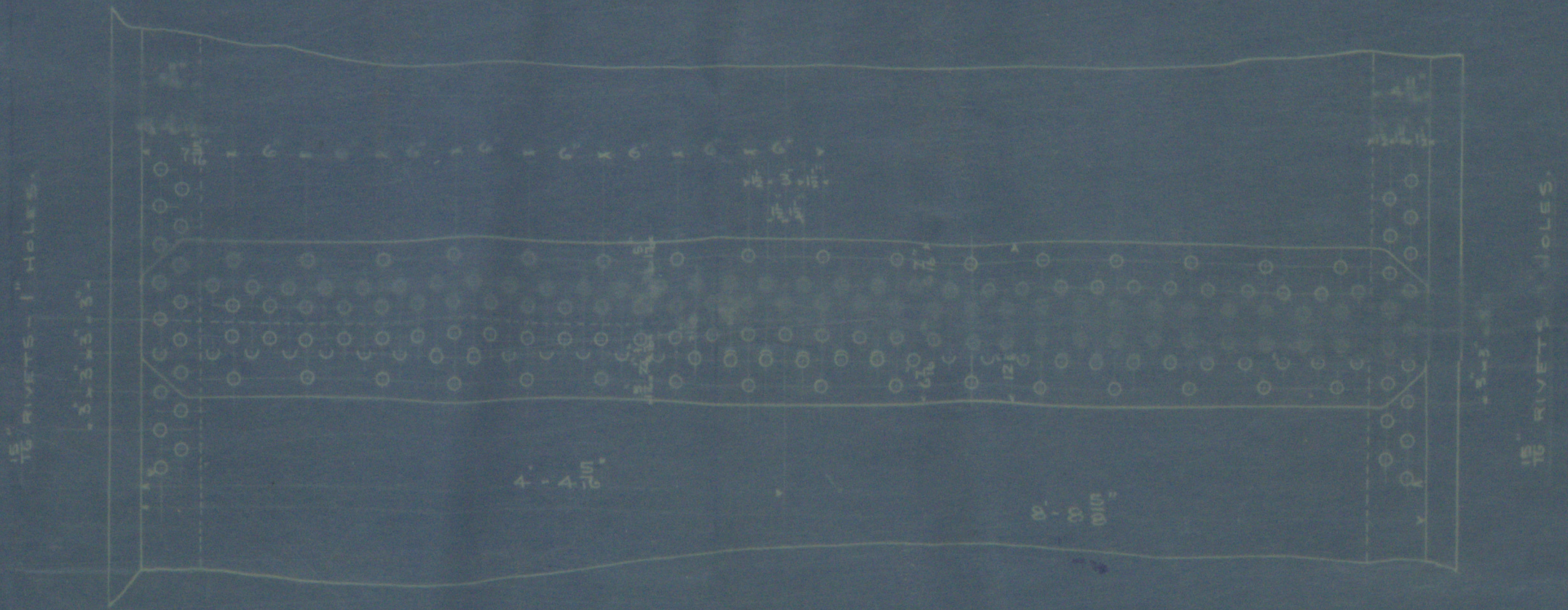
TOP MANHOLE 16" x 12"
FITTED WITH McNEIL'S
PATENT COMPENSATING RING.



HEATING SURFACE

2 FURNACES = 50.7 SQ. FT.
2 COMB CHAM^{rs} = 81.2 "
86 TUBES = 419.4 "
TOTAL 551.3 SQ. FT.

GRATE AREA = 22.15 sq



LONGITUDINAL SEAM DOUBLE BUTT STRAPS 1/2" THICK INSIDE, 3/4" THICK OUTSIDE.
13" RIVETS, 7" HOLES, 6" PITCH, TREBLE RIVETTED.

PLATE 85.4% (BOT + LLOYD'S) RIVET 95.8% (BOT), RIVET 99.1% LLOYD'S.

ALL HOLES TO BE DRILLED, NO DRIFTING ALLOWED.
ALL DRILLING TO BE DONE IN PLACE.

BOILERS FOR N° 284. 2-OFF

8'-6" DIA. 9'-0" LONG. WORKING PRESS. 160 LBS. PER SQ. IN.
SCALE ONE INCH = ONE FOOT.

30. 12. 98 R. L.

TO BE TESTED BY WATER PRESSURE TO 320 LBS. PER SQ. IN.

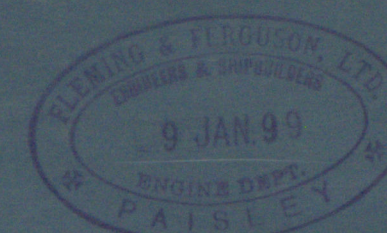
STAYS SHOWN THUS ARE 1 1/2" DIA 9 THDS

RETURN TUBE BOILERS FOR

CLYDE NAVIGATION TRUST
CROSS FERRY VEHICULAR STEAMER

TO BE CONSTRUCTED OF STEEL
TO BOARD OF TRADE, LLOYD'S, AND
SCOTTISH BOILER INSURANCE COMPANY'S
REQUIREMENTS.

Gr 1/1/00



TRACING N° 1.

Heming & Ferguson 284
vehicular ferry
Stimmieston.
Hls Rpt no 17814

GLS 286-0108

