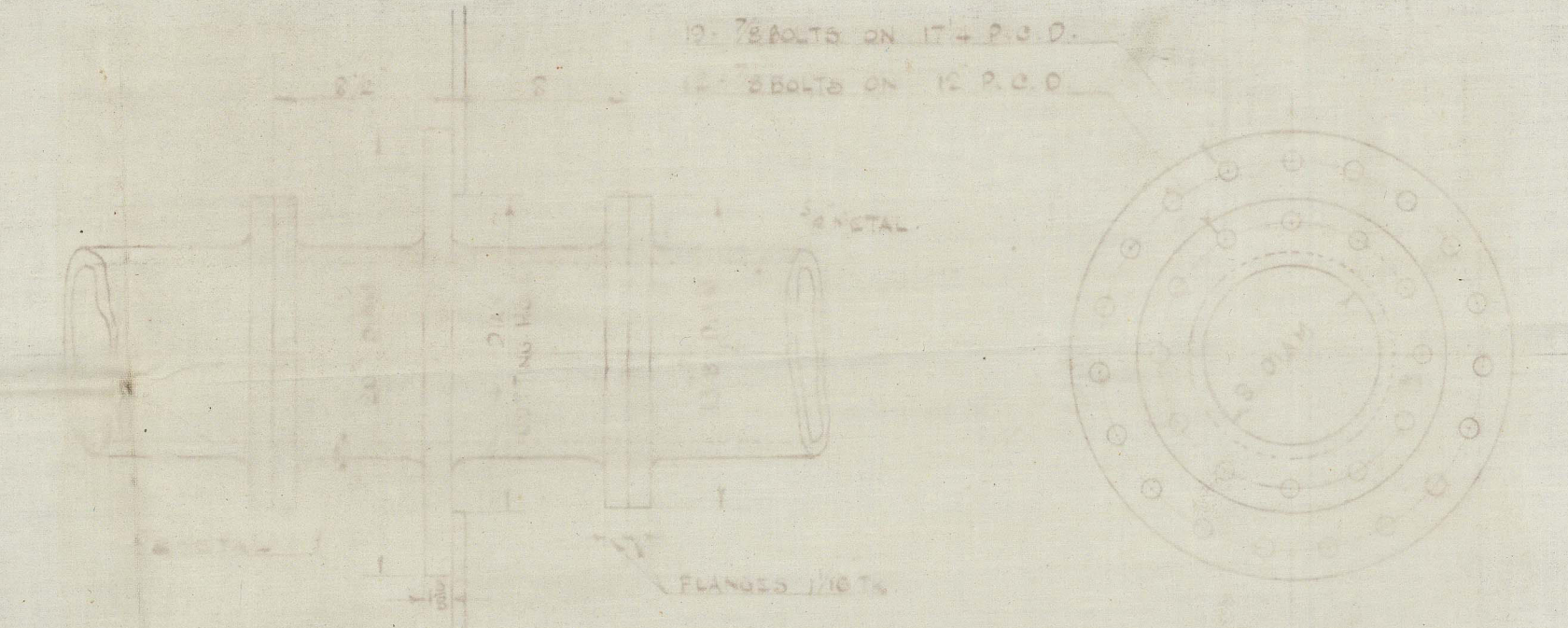
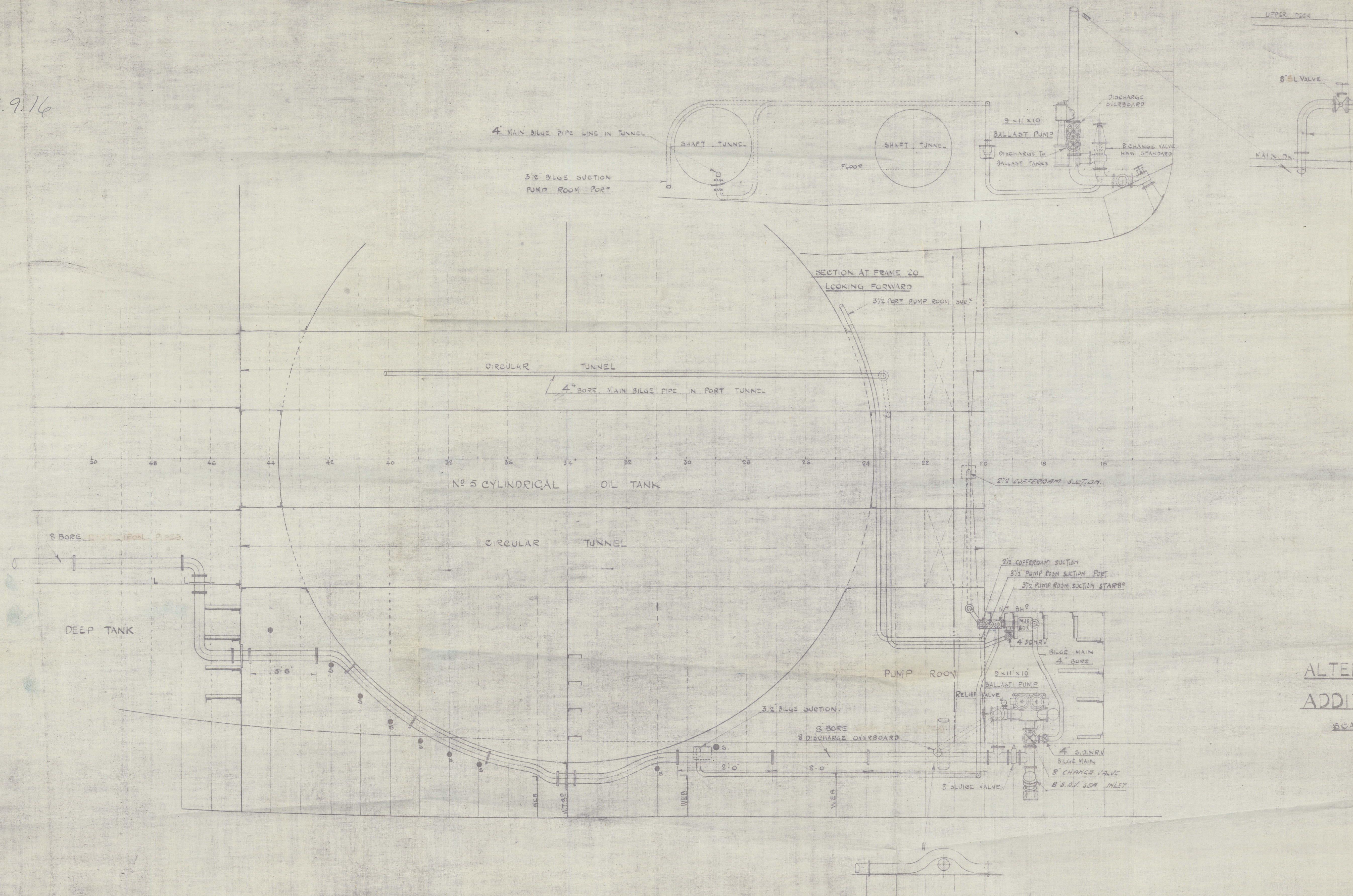


27.9.16



DETAIL OF 8 D.A.M. BULKHEAD PIECE  
SCALE 1/2" = 1 FOOT

**R.F.A. "ABADOL"**  
**ALTERED LEAD OF BALLAST MAIN FROM AFT TANKS &**  
**ADDITIONAL BALLAST PUMP ARRANGEMENT**  
 SCALE 1/4" = ONE FOOT CHARGE A

NOTE: PIPES MADE FROM TEMPLATES TAKEN FROM SHIP.

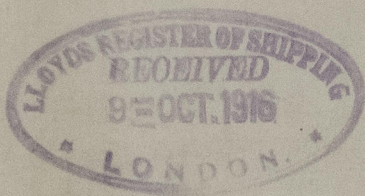


CT. 96. 26.9.16



R.F.A. "abadol"

Detail of altered lead of Ballast  
Main from after Tanks



© 2021

Lloyd's Register  
Foundation

GLS281-0023