

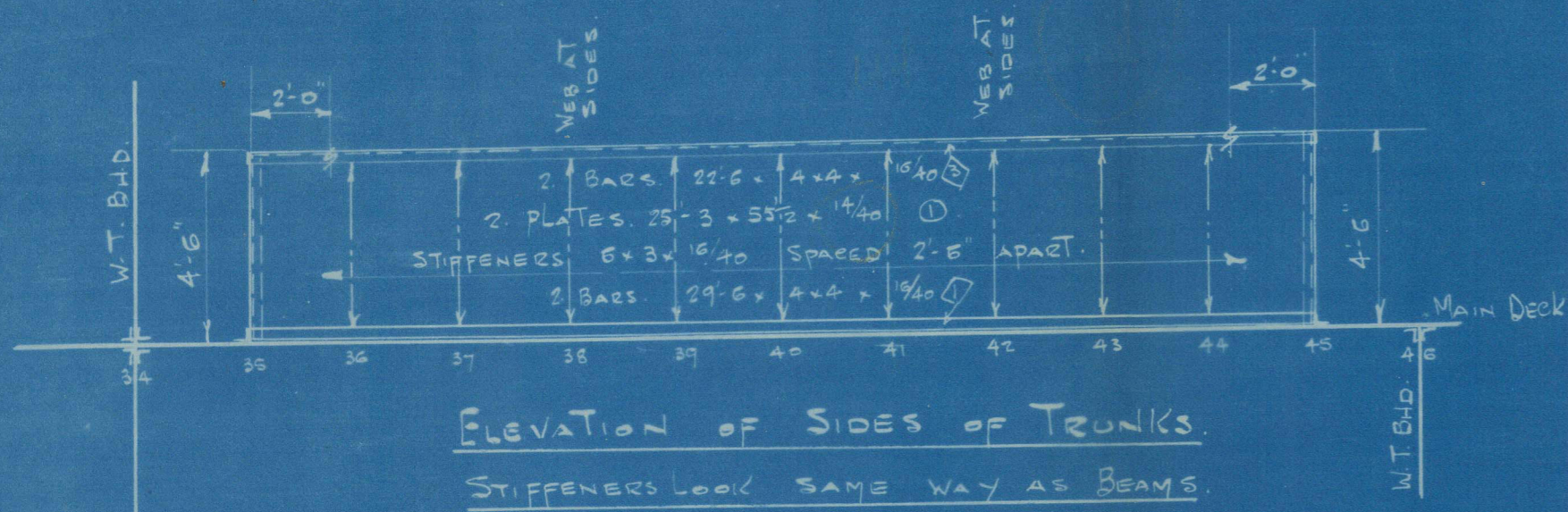
H.M.S. ABADOL

FORWARD DEEP TANK (No 3) EXPANSION TRUNK

SCALE $\frac{1}{4}" = 1 \text{ FOOT}$.

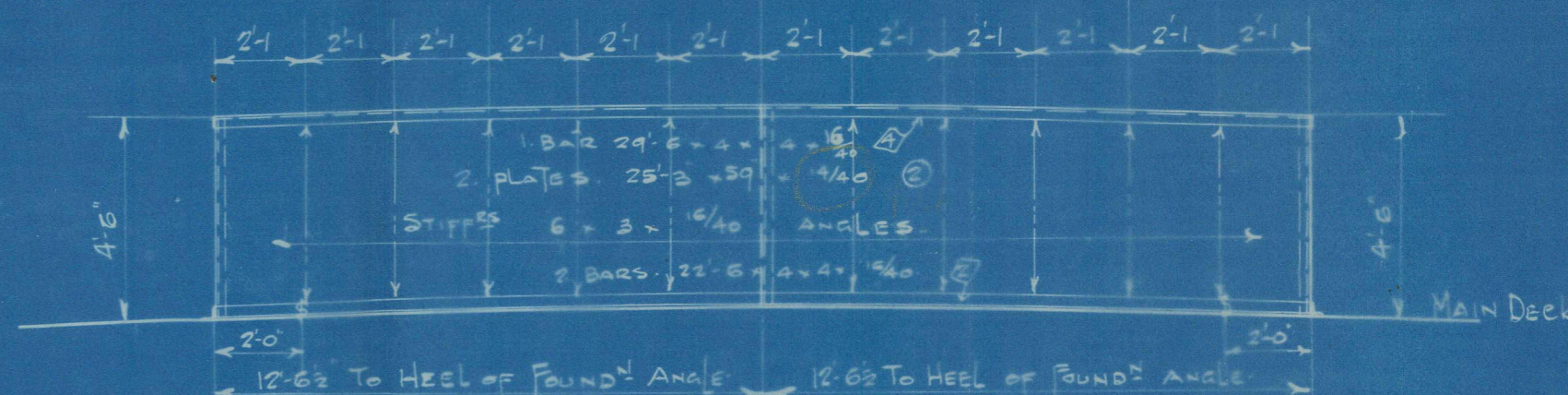
26.5.16

26.5.16



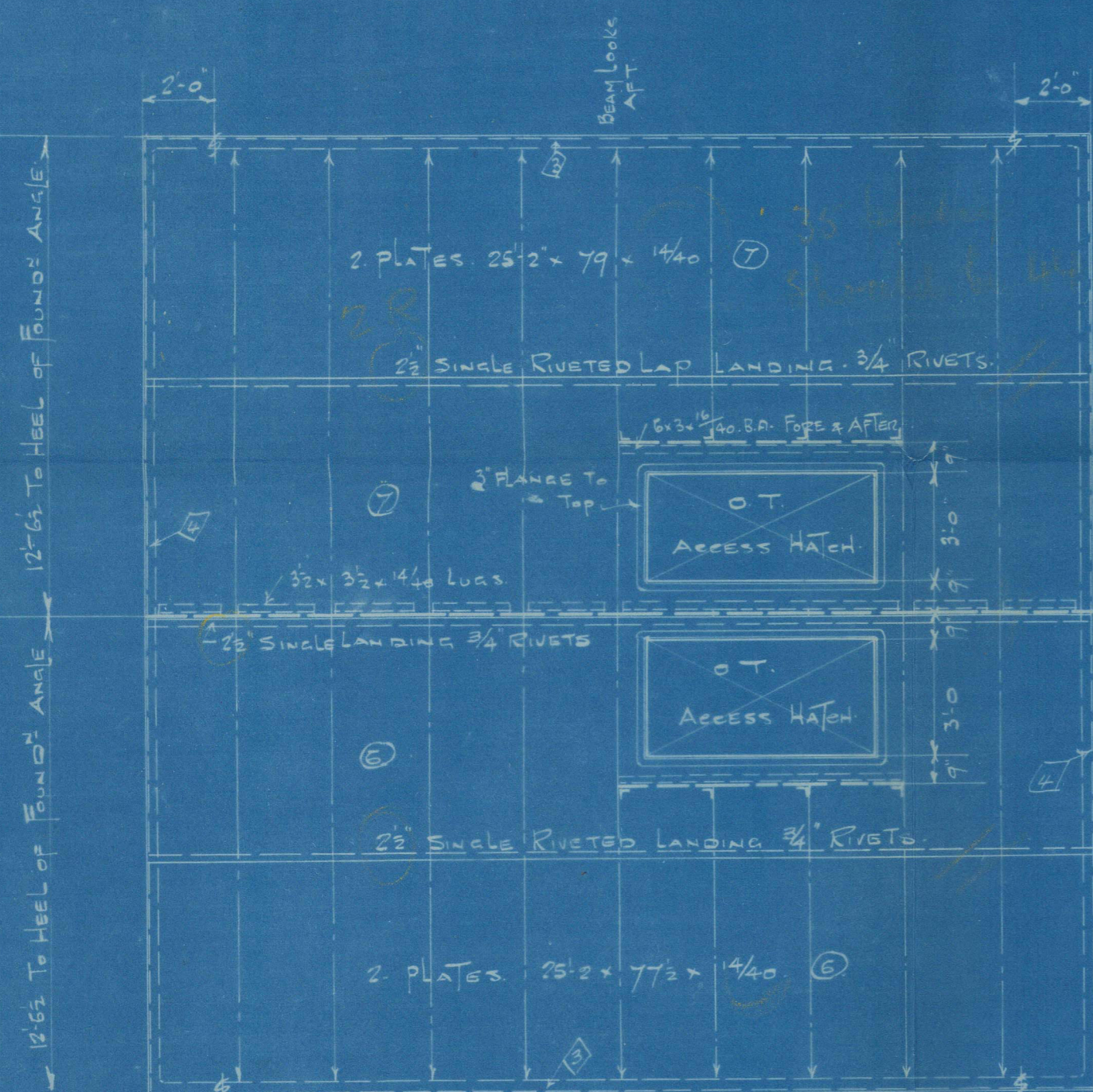
ELEVATION OF SIDES OF TRUNKS.

STIFFENERS LOOK SAME WAY AS BEAMS.



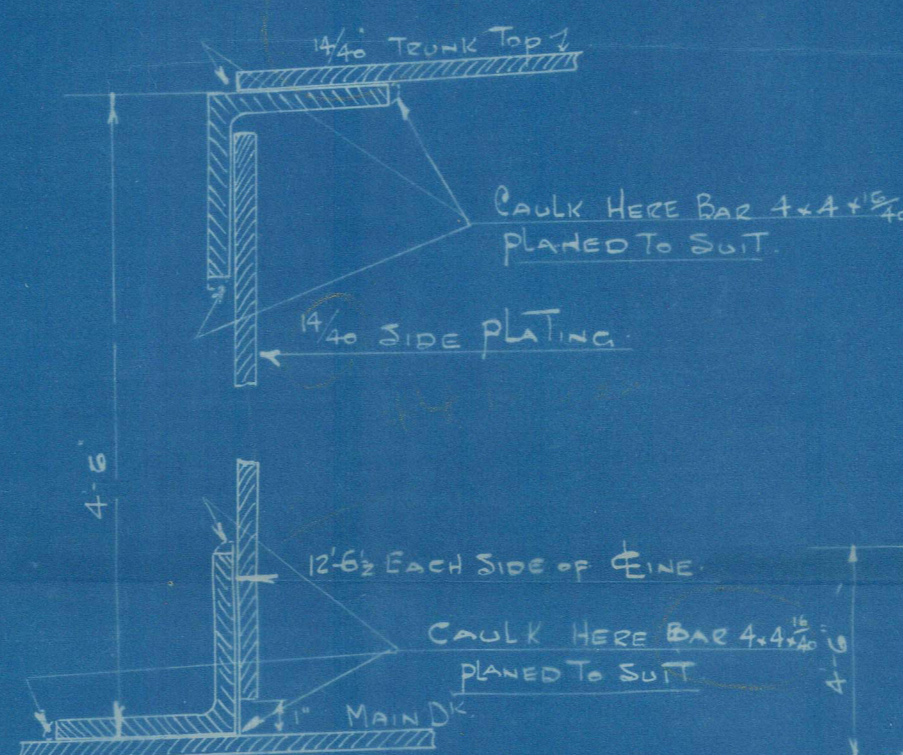
ELEVATION OF FORD. & AFTER ENDS.

NOTE - EXPANSION TRUNK TOP TO HAVE SAME CAMBER AS DECK

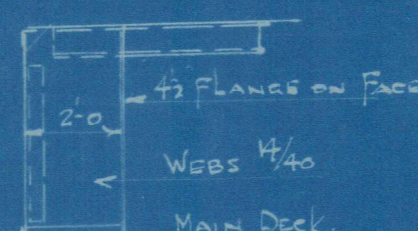


BEAMS 8 x 3 1/2 x 1/40 B.A.s. BRACKETED TO SIDE STIFFERS
BEAMS ALL LOOK FORWARD

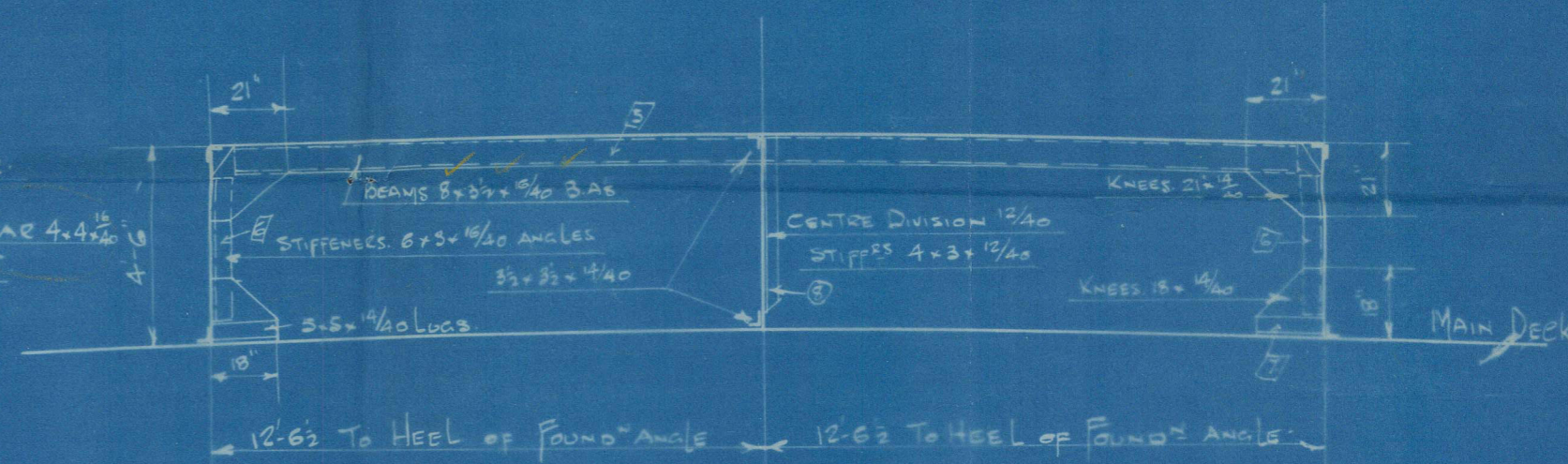
PLAN VIEW OF TRUNK TOP



SECTION THRU SIDE PLATING.



DETAIL OF WEBS



SECTION THRU EXPANSION TRUNK
SHOWING STIFFENERS ETC.

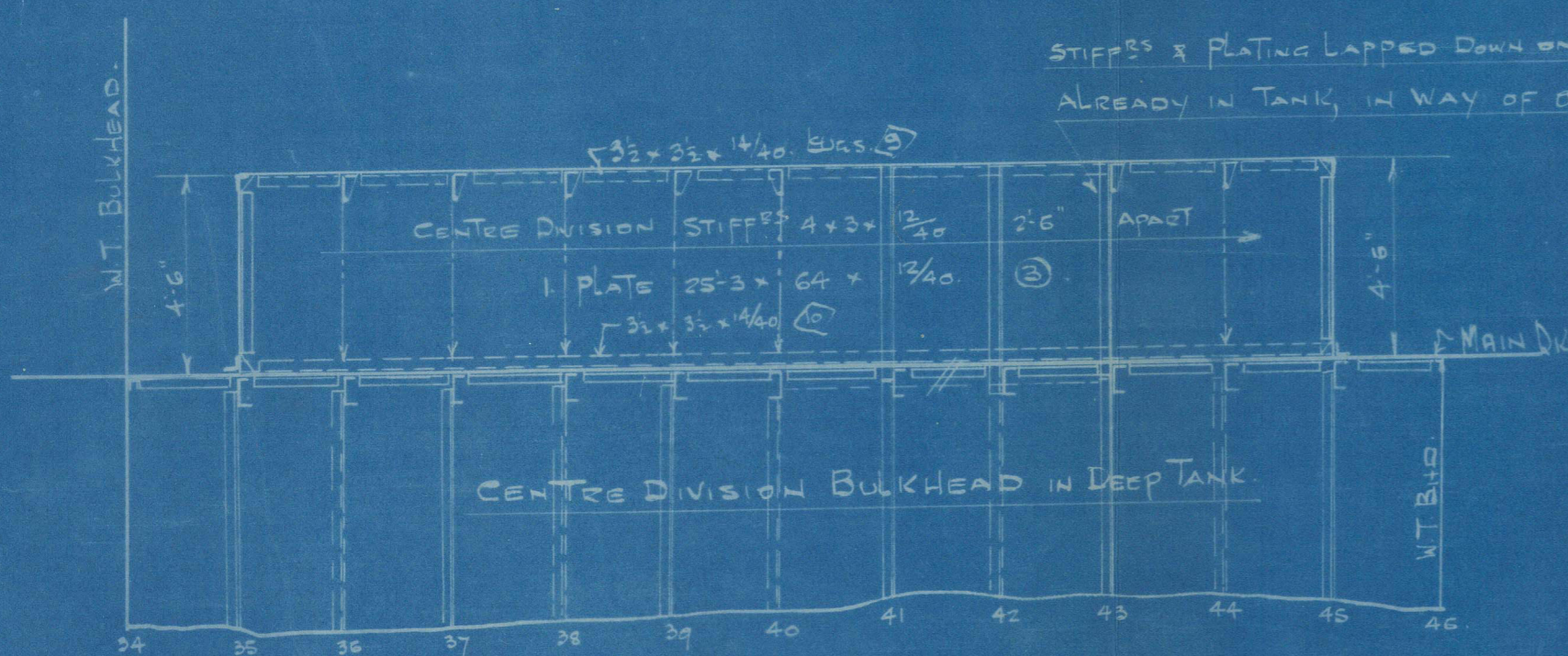
RIVETING TABLE

| ITEM | DIA | PITCH | HEAD | HEEL | MATERIAL |
|-------------------------------|------|--------|------|-------|----------|
| FOUNDATION ANGLE BOTH FLANGES | 5/8" | 2 5/8" | PAN | FLUSH | CON |
| TOP ANGLE | 3/4" | 2 5/8" | " | " | " |
| CORNER ANGLES | 3/4" | 2 5/8" | " | " | " |
| BEAMS TO TOP PLATING | 3/4" | 4" | " | " | " |
| STIFFENERS TO SIDES | 3/4" | 4" | " | " | " |
| " TO CR. DIVISION | 3/4" | 4" | " | " | " |
| CENTRE DIV. BOTTOM ANGLE | 3/4" | 3" | " | " | " |
| " " TOP ANGLE | 3/4" | 3" | PAN | FLUSH | " |

LIST OF ANGLES

| 2 BARS | DTB | 29'-6" | 4 x 4 | 1 3/8" | BOTTOM ANGLE SIDES |
|--------|-----|--------|---------------|--------|--------------------------|
| 2 | 1 | 22'-6" | " | " | ENDS |
| 2 | 1 | 22'-6" | " | " | TOP ANGLE SIDES |
| 2 | 1 | 29'-6" | " | " | ENDS |
| 9 | 1 | 25'-3" | 8 x 3 1/2 | " | B.A. BEAMS |
| 8 | 1 | 32'-0" | 6 x 3 | " | STIFFERS ON SIDES & ENDS |
| 2 | 1 | 23'-0" | 5 x 5 | 1 1/2" | BRACKET LUGS |
| 2 | 1 | 30'-0" | 4 x 4 | 1 1/2" | CR. DIV. STIFFER |
| 1 | 1 | 25'-0" | 3 1/2 x 3 1/2 | 1 1/2" | LUGS TO TOP PLATING |

26.5.16



ELEVATION OF CENTRE WASH BULKHEAD

STIFFERS LOOK OPPOSITE WAY TO BEAMS.

R.F.A. "abadol"

Expansion Tank over forward
deep tank.

GLS281-0019

H.M.S. "ABADOL"
Forward deep tank
expansion tank



© 2021

Lloyd's Register
Foundation