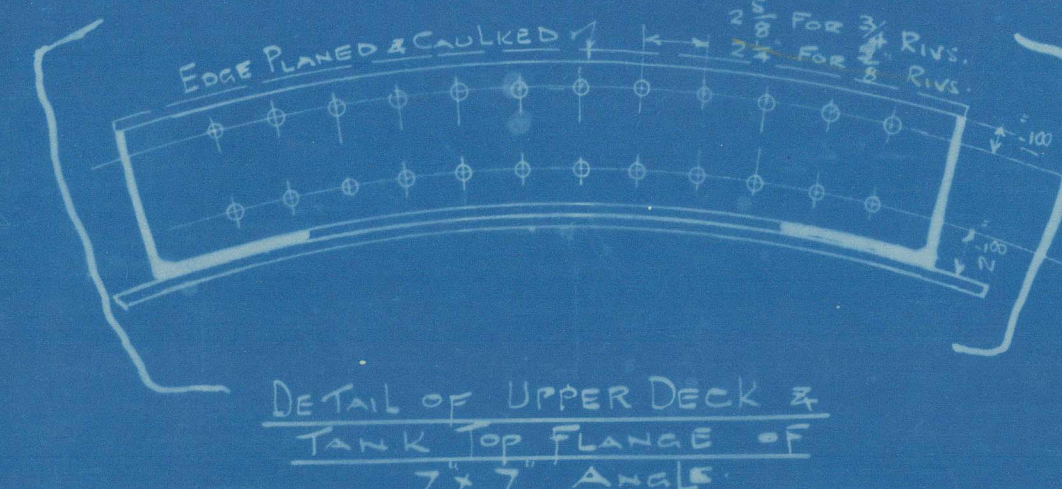
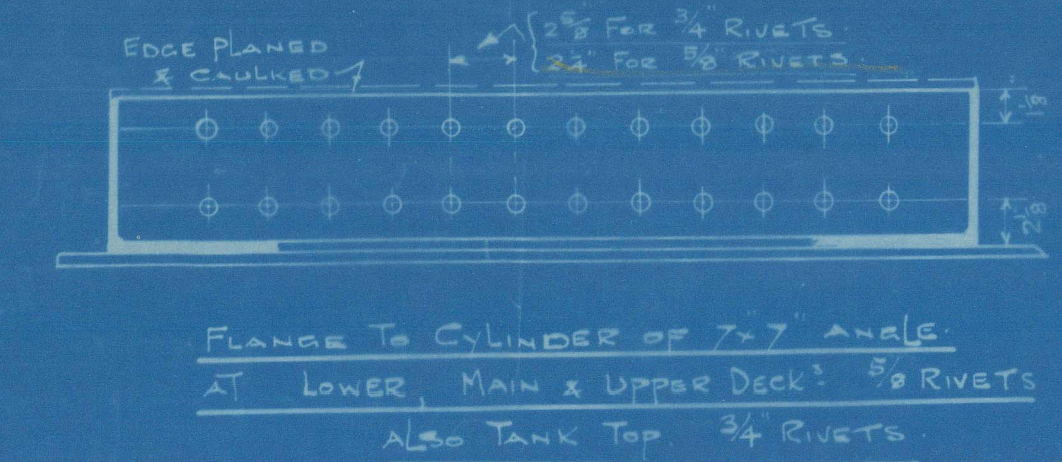
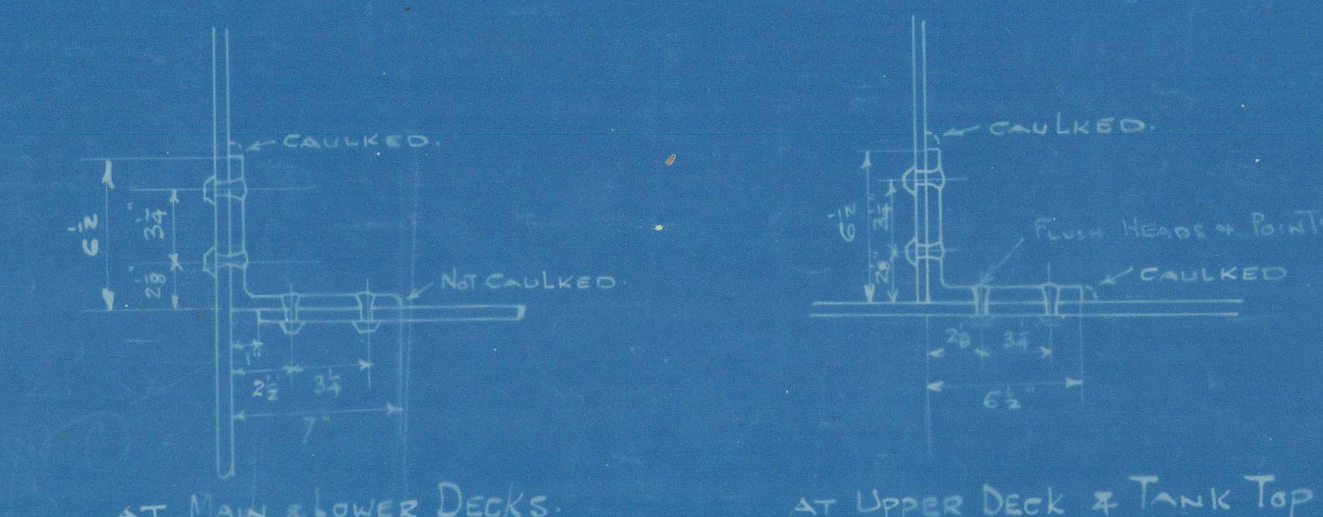


66-16  
H.M.S. "ABADOL"  
Ex. "MONTEZUMA"  
No 1. TANK.



ITEM	IN	FROM	HEAD	ENT	STG.
7x7 ANGLE TO CYLINDER	2 1/2	2 1/2	2 1/2	2 1/2	2 1/2
BUTTS OF CYLINDER PLATE DR 4 1/2	5 1/2	5 1/2	5 1/2	5 1/2	5 1/2
DITS	3 1/2	3 1/2	3 1/2	3 1/2	3 1/2
BEAMS OF CYLINDER PLATE SR 2 1/2	5 1/2	5 1/2	5 1/2	5 1/2	5 1/2
DITS	3 1/2	3 1/2	3 1/2	3 1/2	3 1/2
BUTTS OF LOWER DECK PLATE DR 5	5 1/2	5 1/2	5 1/2	5 1/2	5 1/2
BRACKETS	3 1/2	3 1/2	3 1/2	3 1/2	3 1/2

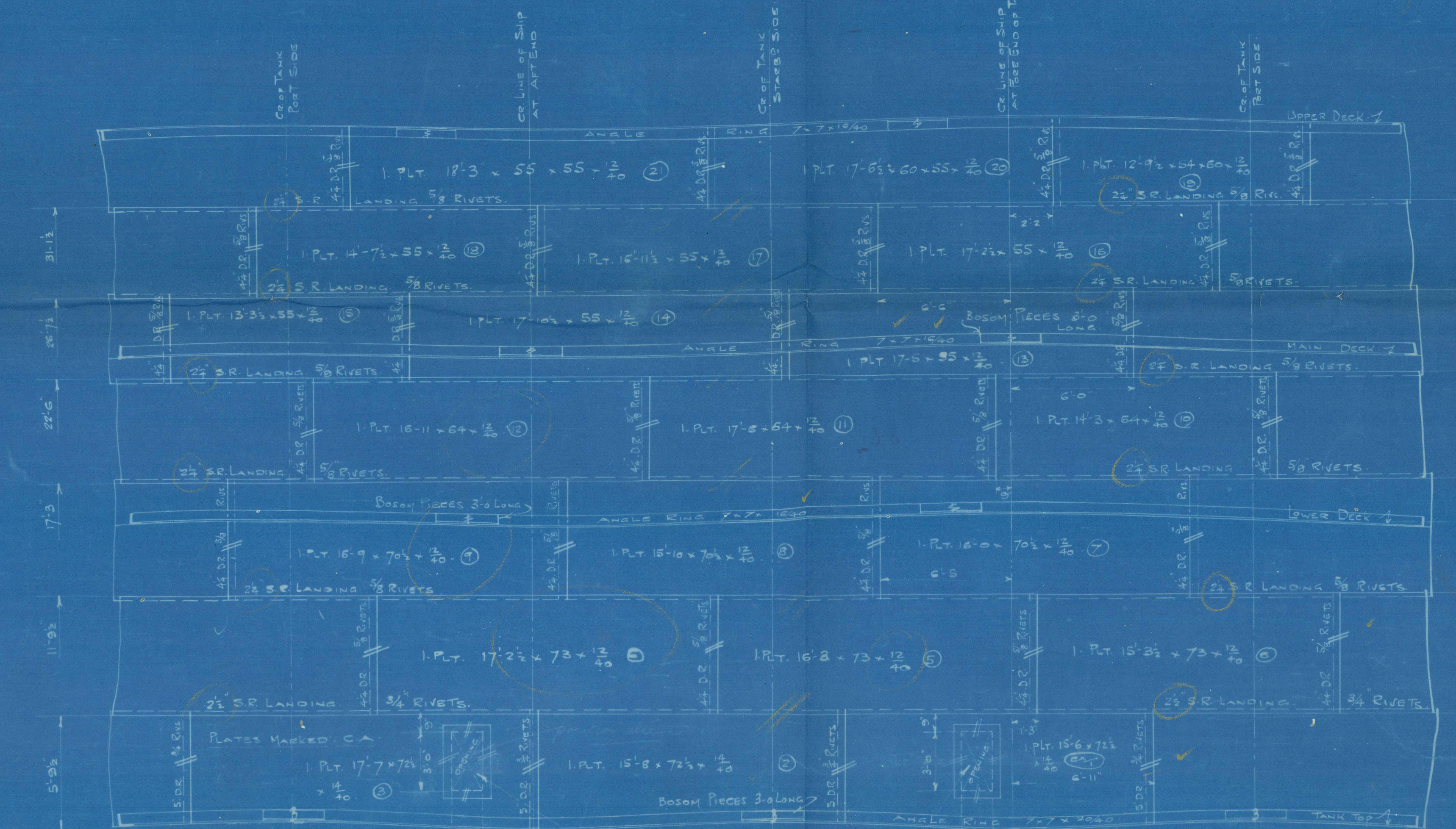
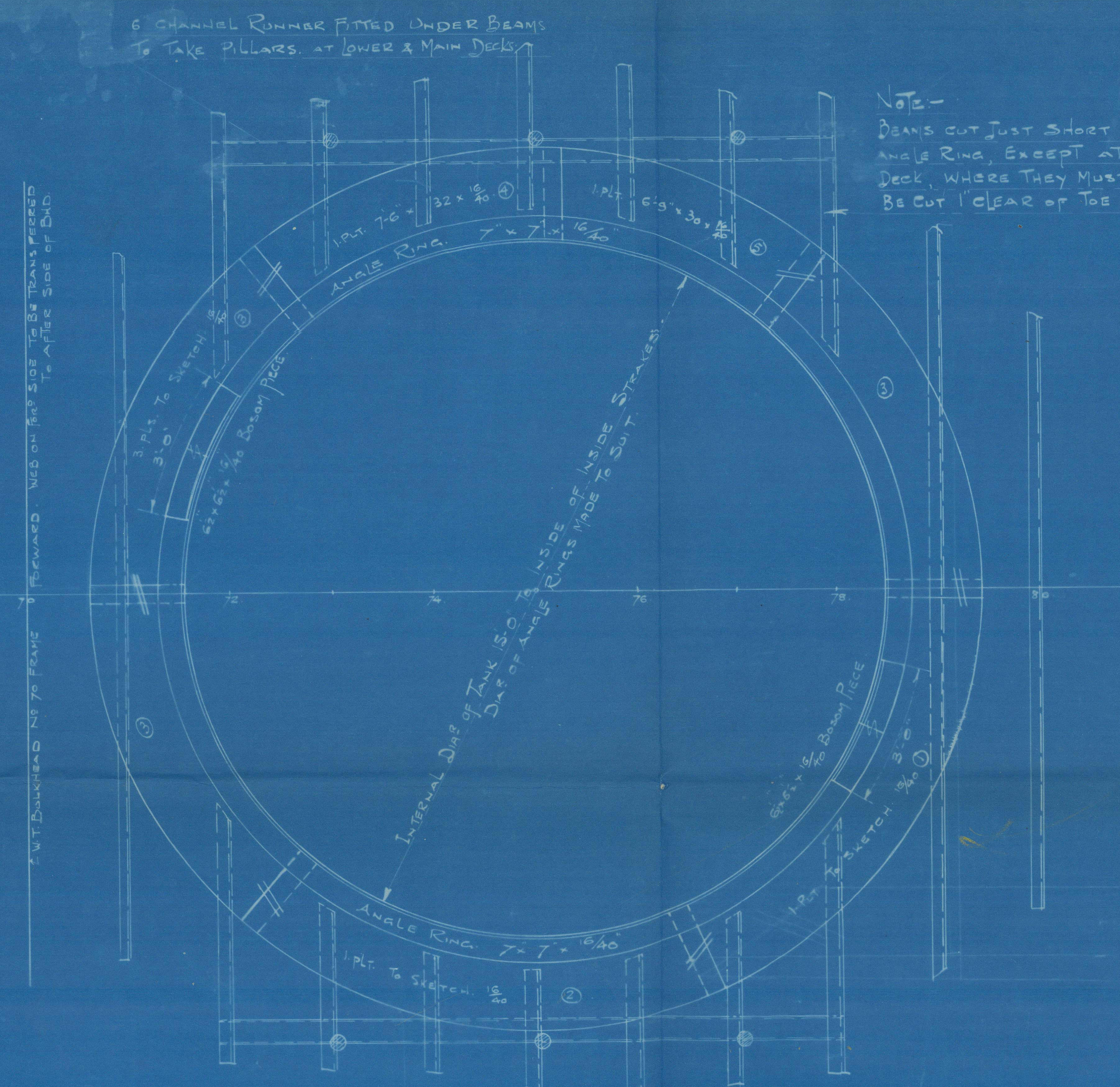
NOTE: BUTTS & BEAMS OF CYLINDER PLATING CAULKED INSIDE & OUTSIDE.



SECTIONS THRO' 7x7 ANGLES

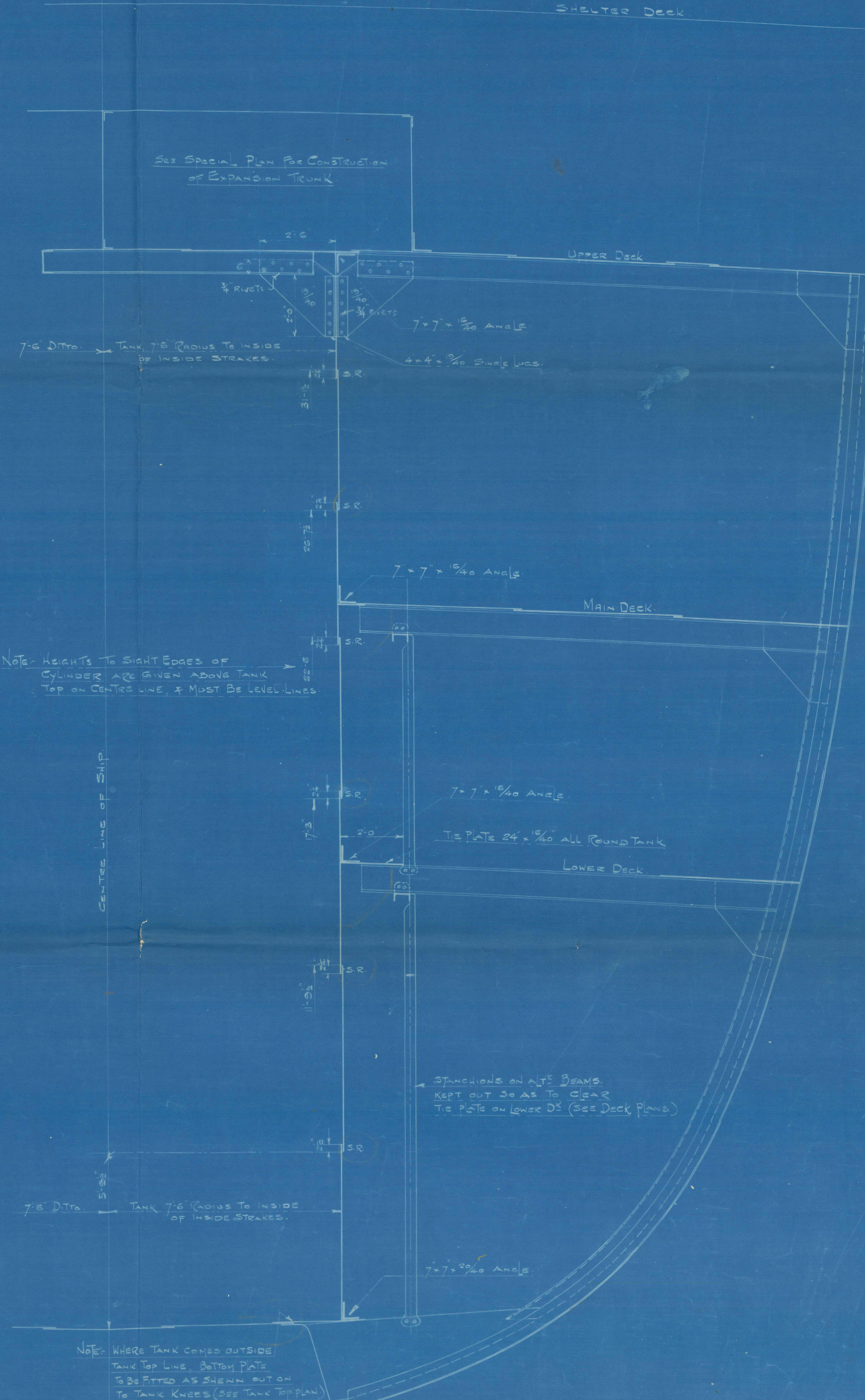
SECTION DETAIL SHOWING UPPER D<sup>o</sup> BEAM KNEES PLANGED WHERE ROUND OF TANK CAUSES EXCESSIVE BEVEL TO BRACKET ANGLED

MATERIAL	QTY
BEAM BRACKET U.D.	1
PLATES 14x10 x 1/2 x 12x10 S.B.	1
TANK TOP RING	1
1 BAR 40x10 x 7x7 x 3/4 T.T.A.	1
LOWER DECK RING	1
1 BAR 48x6 x 7x7 x 1/2 L.D.A.	1
MAIN DECK RING	1
1 BAR 48x6 x 7x7 x 1/2 L.D.A.	1
UPPER DECK RING	1
1 BAR 48x6 x 7x7 x 1/2 U.D.A.	1
BRACKET LUGS	1
1 BAR 30x10 x 4x4 x 1/2 S.B.	1



EXPANSION OF CYLINDER PLATING  
LOOKING ON OUTSIDE  
SCALE 1" = 1' FOOT

SECTION THRO' No 1. TANK AT 75 FRAME FORWARD  
LOOKING FORWARD  
SCALE 1" = 1' FOOT



NOTE: HEIGHTS TO SIGHT EDGES OF CYLINDER ARE GIVEN ABOVE TANK TOP ON CENTRE LINE, & MUST BE LEVEL LINES

NOTE: WHERE TANK COMES OUTSIDE TANK TOP LINE, BOTTOM PLATE IS TO BE FITTED AS SHOWN OUT ON TANK KNEES (SEE TANK TOP PLAN)



R.F.A. Abadol

Nº 1 Oil Tank.



© 2021

Lloyd's Register  
Foundation

GLS287-0005



H.M.S. "ABADOL"  
Nº 1 Oil Tank.

GLS281 - 0005



© 2021  
Lloyd's Register  
Foundation