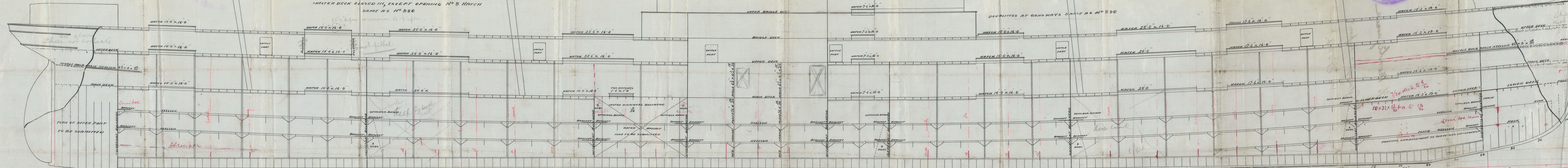


No 383.

COMMON DIMENSION

11. 1. 98
16. 6. 98
7. 7. 98.
17. 8. 98
24. 10. 98



SCALE $\frac{1}{8}$ IN TO 1 FOOT

STRONG BEAMS ON UPPER DECK PLATE $14 \times \frac{13}{16}$ H ANGLES $6 \times 4 \times \frac{10}{16}$ PLACED WHERE PRACTICABLE
STRONG BEAMS ON MAIN DECK PLATE $13 \times \frac{13}{16}$ H ANGLES $6 \times 4 \times \frac{10}{16}$ PLACED WHERE PRACTICABLE
DECK PLANS WILL BE SUBMITTED SHOWING POSITION OF STRONG BEAMS, AND EXTRA STRENGTH OF DECK PLATING IN WAY OF HATCHES.

Webframes as indicated in red.
 Doublings in way of ports etc as in no 380

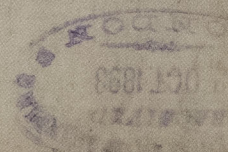
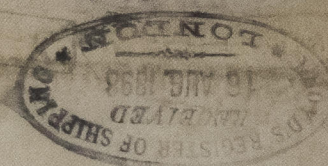
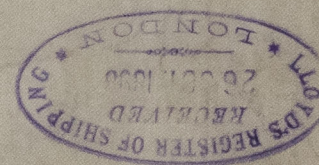
DRAWING № 8754

© 2021
Lloyd's Register
Foundation

$\frac{3}{5}$ Montezuma

Glasgow repairs

10 27324



Lloyd's Register
Foundation