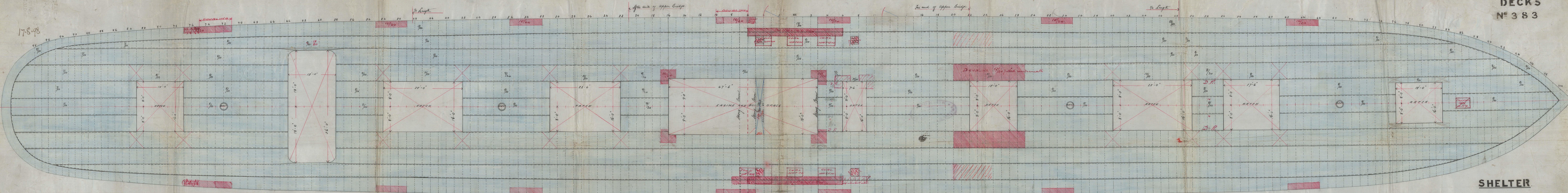


17-8-98

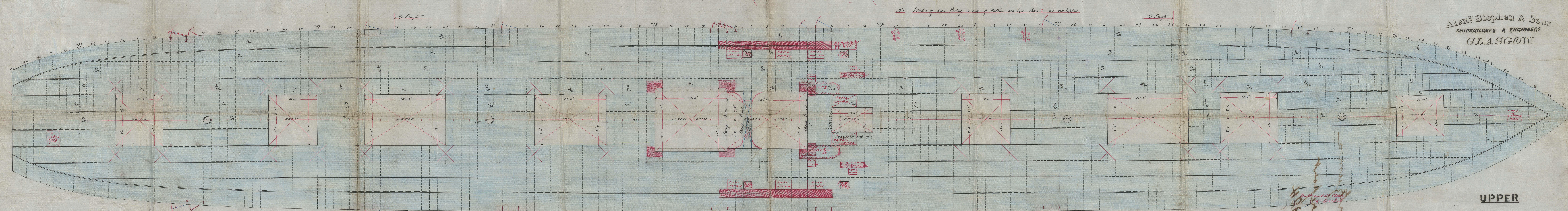
Incumbent over Deck Requirements
No. 1. Shelter Deck. Stronger increased to 1/2" long 1/2" thick. Diagonal.
Also no Shelter Deck. Stronger increased to 1/2" long 1/2" thick. Diagonal.

DECK 5
No 383



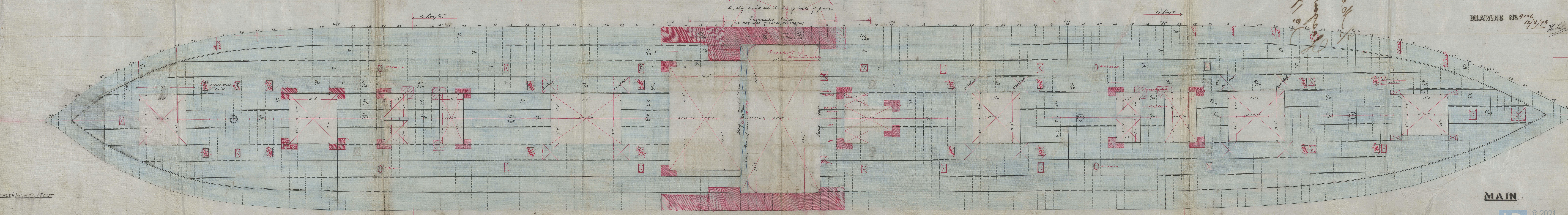
SHELTER

Alexr Stephen & Sons
SHIPBUILDERS & ENGINEERS
GLASGOW



UPPER

DRAWING No 9106
17/8/98



MAIN

Scale 1/4" = 1' 0"

17-8-98

MILAN

15/8/88
2019 EN
BIRKENHEAD

GLASGOW

S. Montgomerie
Glasgow report
No 1732H

645680-0052



© 2021

Lloyd's Register
Foundation

Handwritten text in the left margin, possibly a list or index, including the word "LONDON" and other illegible entries.

