

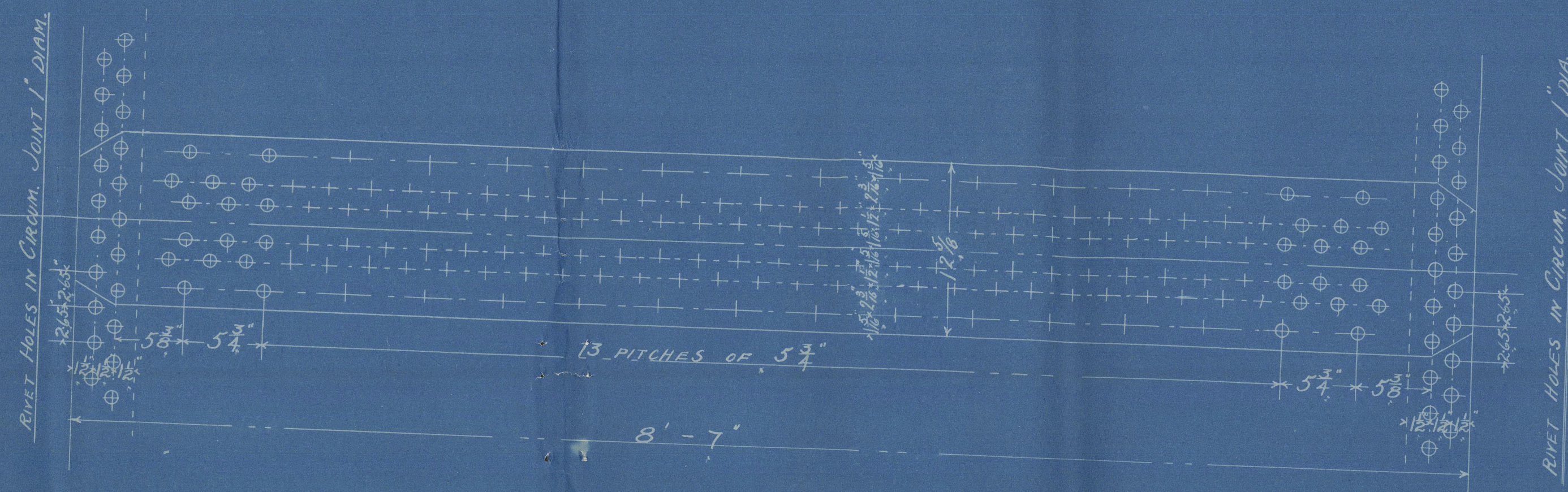
**THICKNESS OF PLATES**

Shell of Boiler	3/8"
Inner Butt Strap	1/2"
Outer do do	5/8"
Top front Back	1/2"
Front Tube Plate	1/2"
Bottom Back	1/2"
Back Tube Plate	1/2"
Combustion Chamber Top	1/2"
do do Side	1/2"
do do Bottom	1/2"
do do Back	1/2"
Reinforcing on Front Tube Plate	1/2"
do on Back	1/2"
do for Manhole on Top	27/32"

**SURFACES**

124 TUBES 3" ext diam. x 6' 2 3/8" long	603.384
Furnaces	65
Fronts	65.124
Grate Surface	53.48
<b>Total</b>	<b>731.5</b>

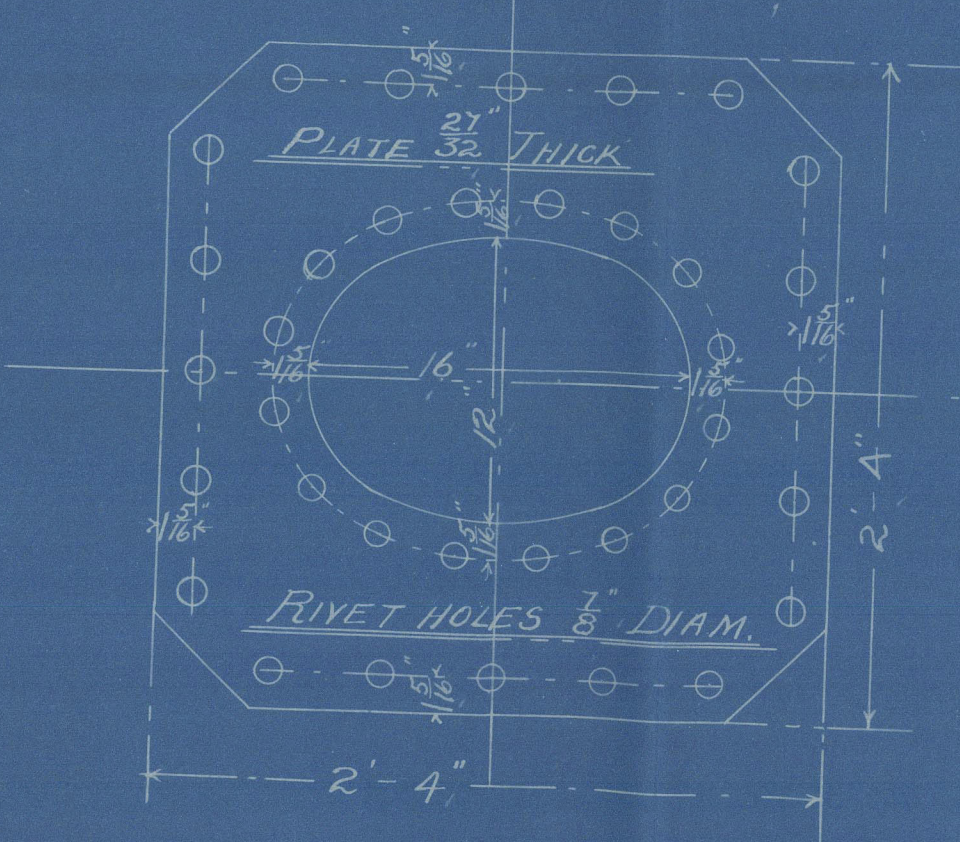
*RM 6/14/98*



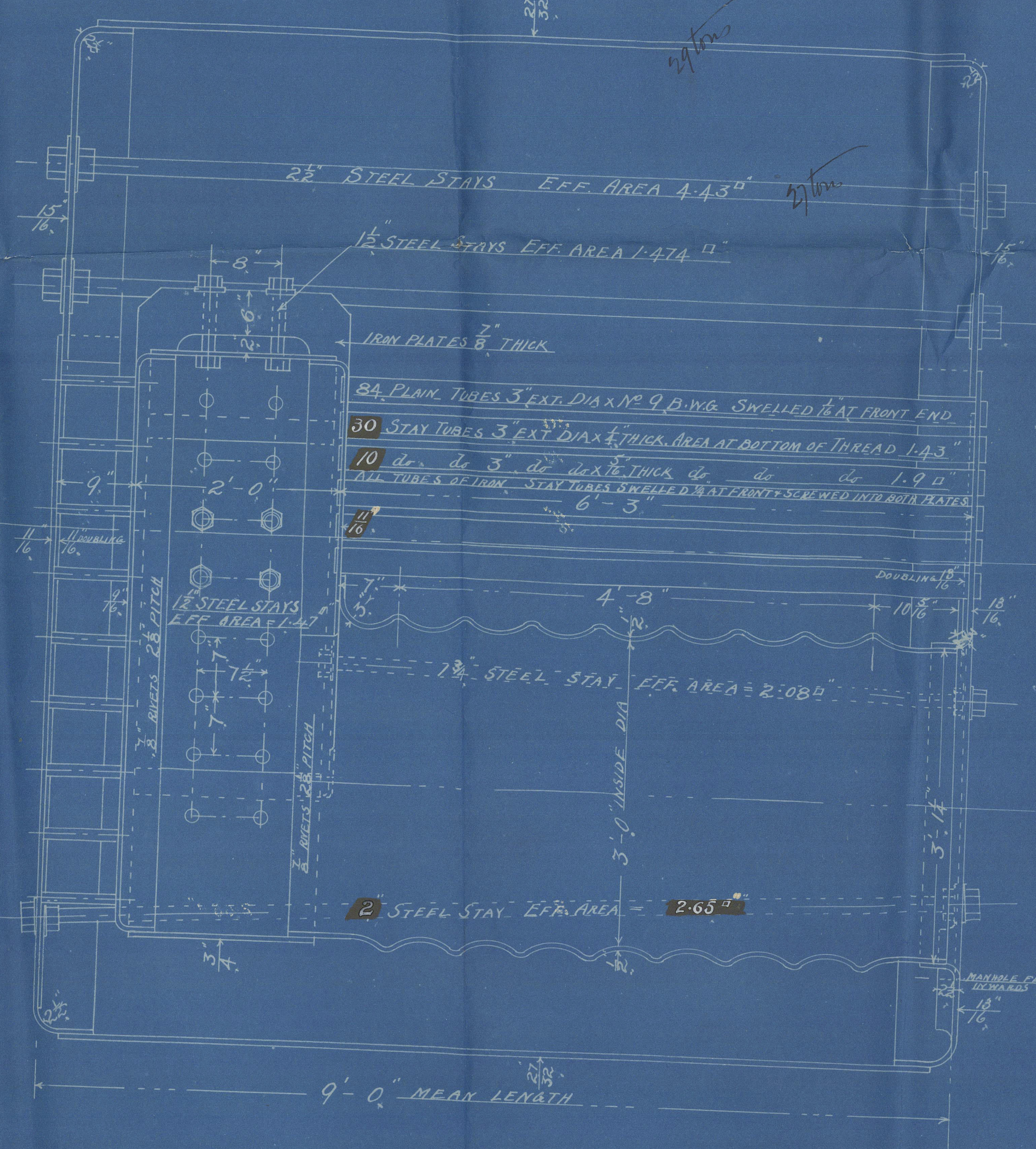
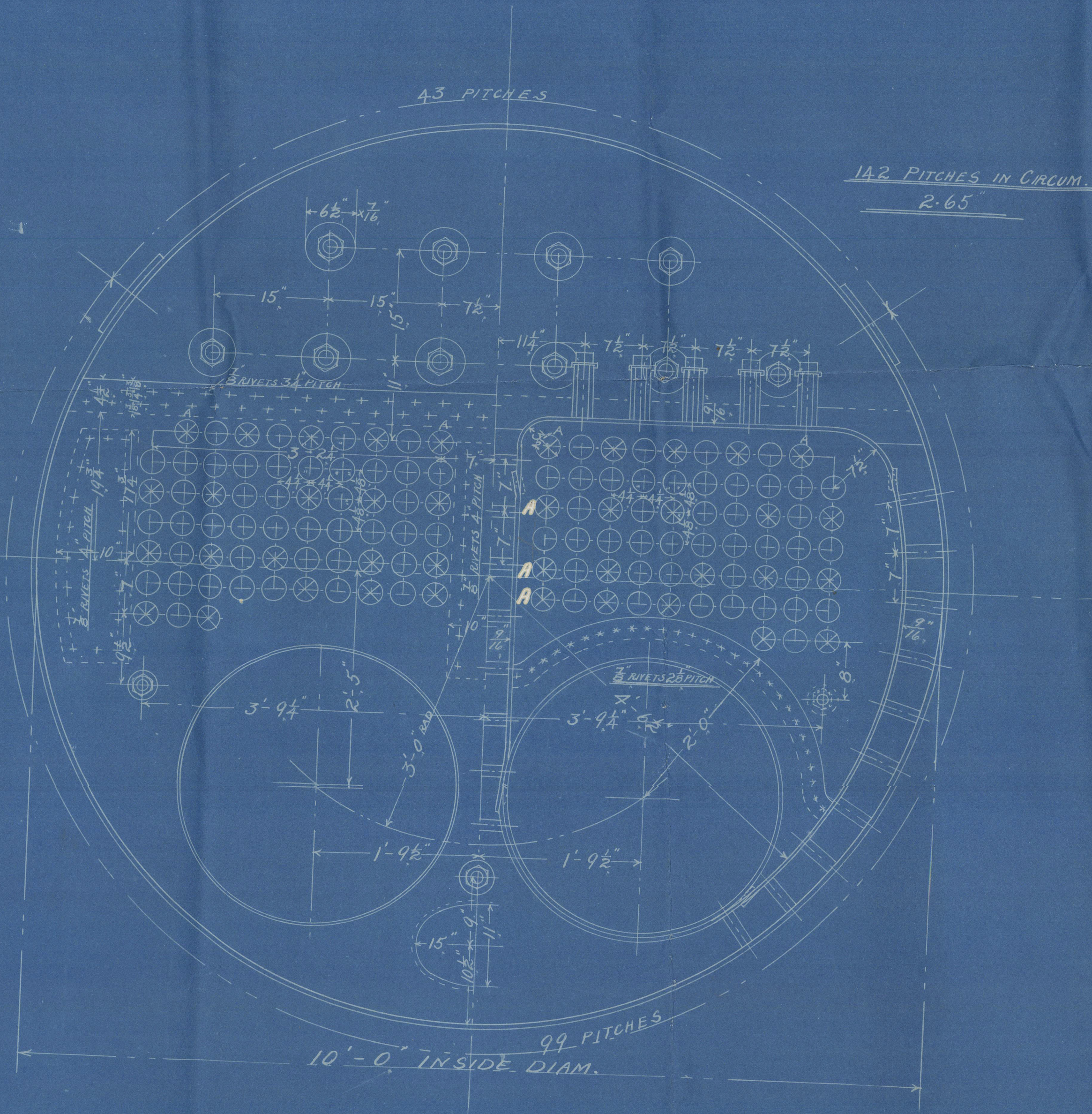
SHELL PLATES 3/8" THICK.  
 INNER BUTT STRAP 1/2"  
 OUTER do do 5/8".

RIVET HOLES 7/8" DIAM. DRILLED IN PLACE.  
 ALL PLATES AND RIVETS OF STEEL.  
 % OF PLATE 84.75. % OF RIVET 92.2.

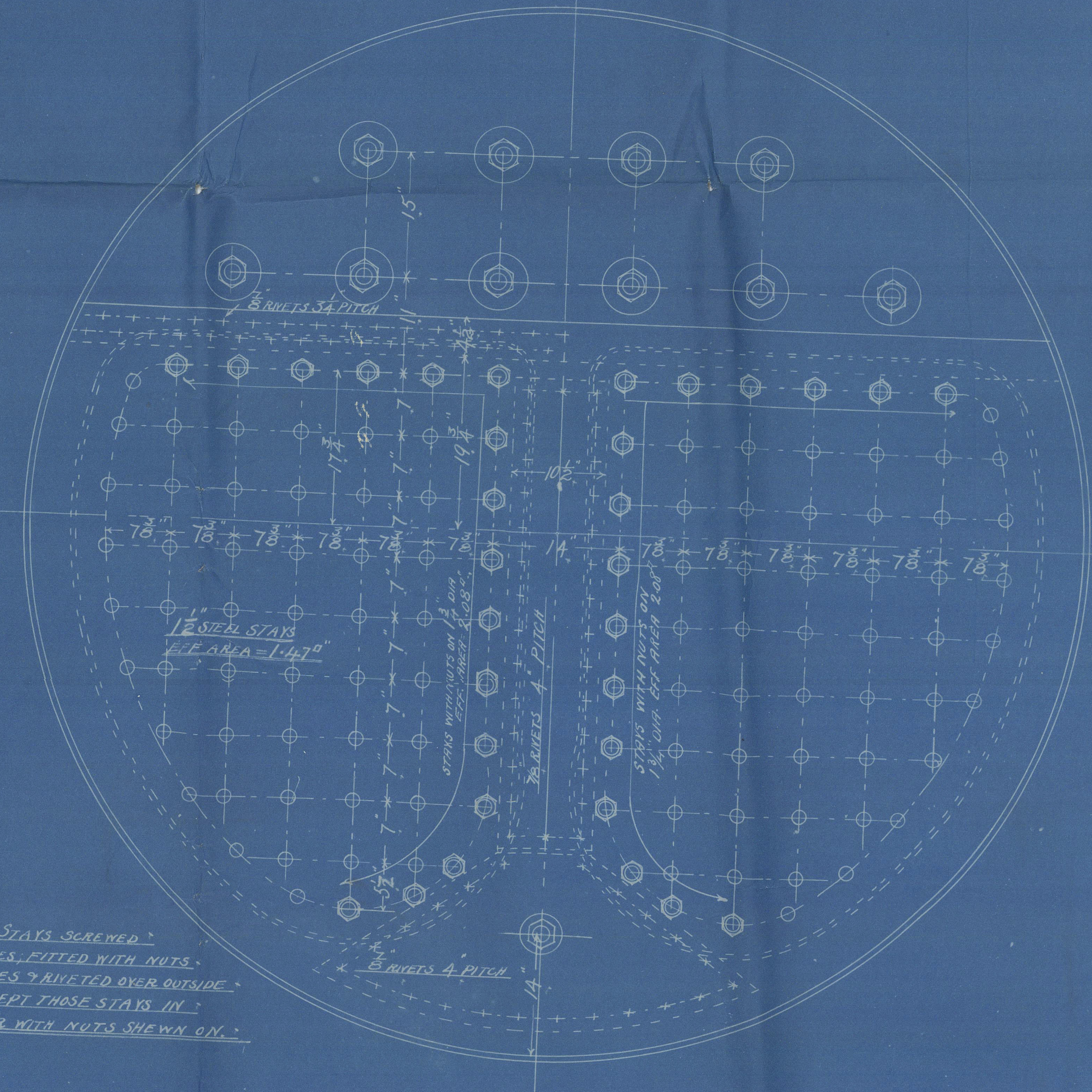
LIMITS OF TENSILE STRESS OF SHELL 29 TO 32 TONS.  
 Scale 1 1/2" = 1 FT.



COMPENSATING PLATE FOR MANHOLE ON TOP



ALL FIREBOX STAYS SCREWED INTO BOTH PLATES, FITTED WITH NUTS. INSIDE FIREBOXES TRAVELLED OVER OUTSIDE OF BOILER EXCEPT THOSE STAYS IN BACK OF BOILER WITH NUTS SHOWN ON.



# DONKEY BOILER NO 316

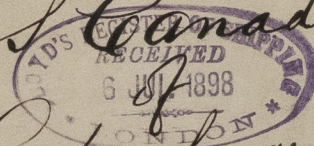
SCALE INCH TO THE FOOT

WORKING PRESSURE 180 LBS

*RM 7/6/98*  
*5/14/98*



L. Rawan. & Son 316  
Donkey Railer  
McMillan S.S. 363  
S. S. Canada  
Copenhagen  
Gls Rpt. No. 17034



GLS277-0062



© 2021

Lloyd's Register  
Foundation