

29637  
**No 4-65**

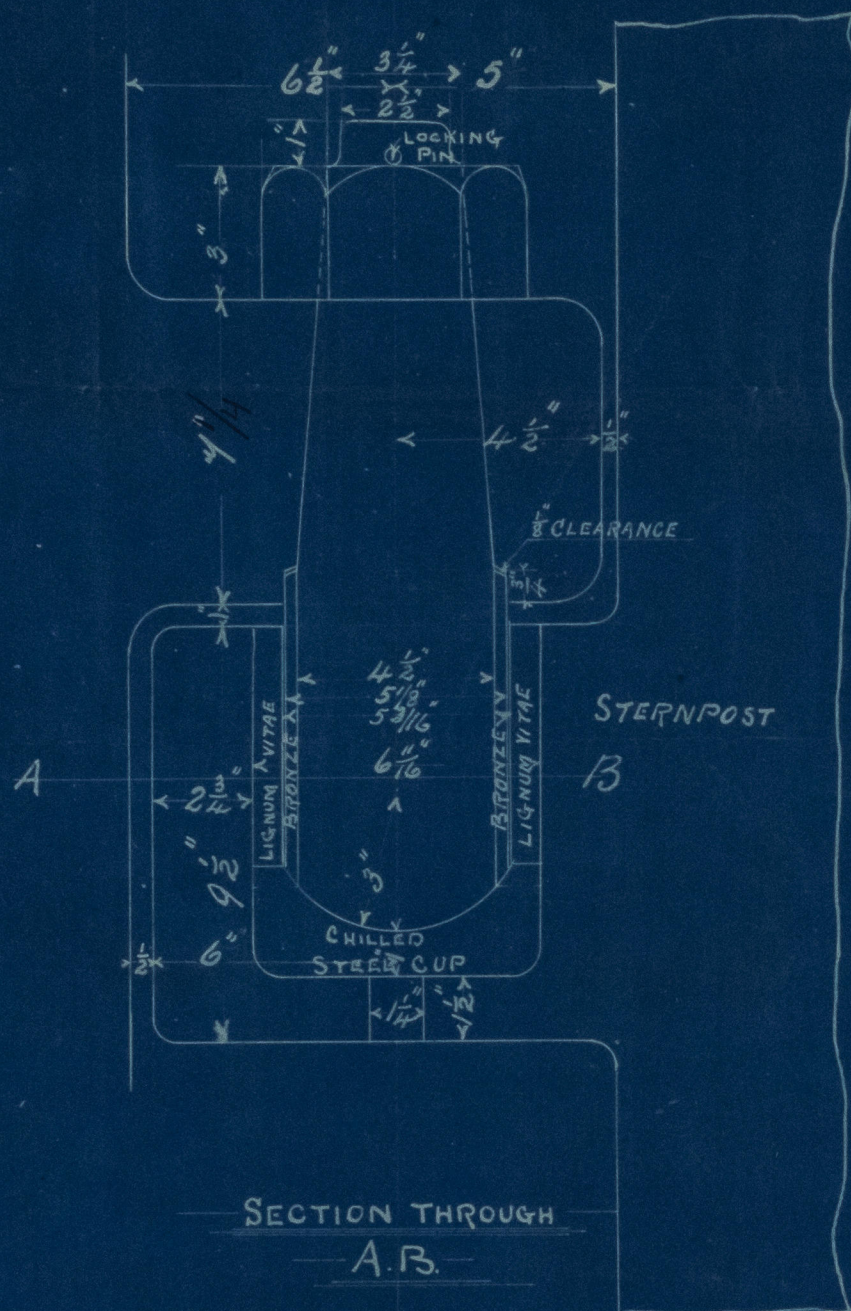
*Lloyd's*

**DETAIL OF PINTLES**

SCALE 3"=1 FOOT.

**BEARING PINTLES**

**4 OFF.**



SECTION THROUGH  
A.B.

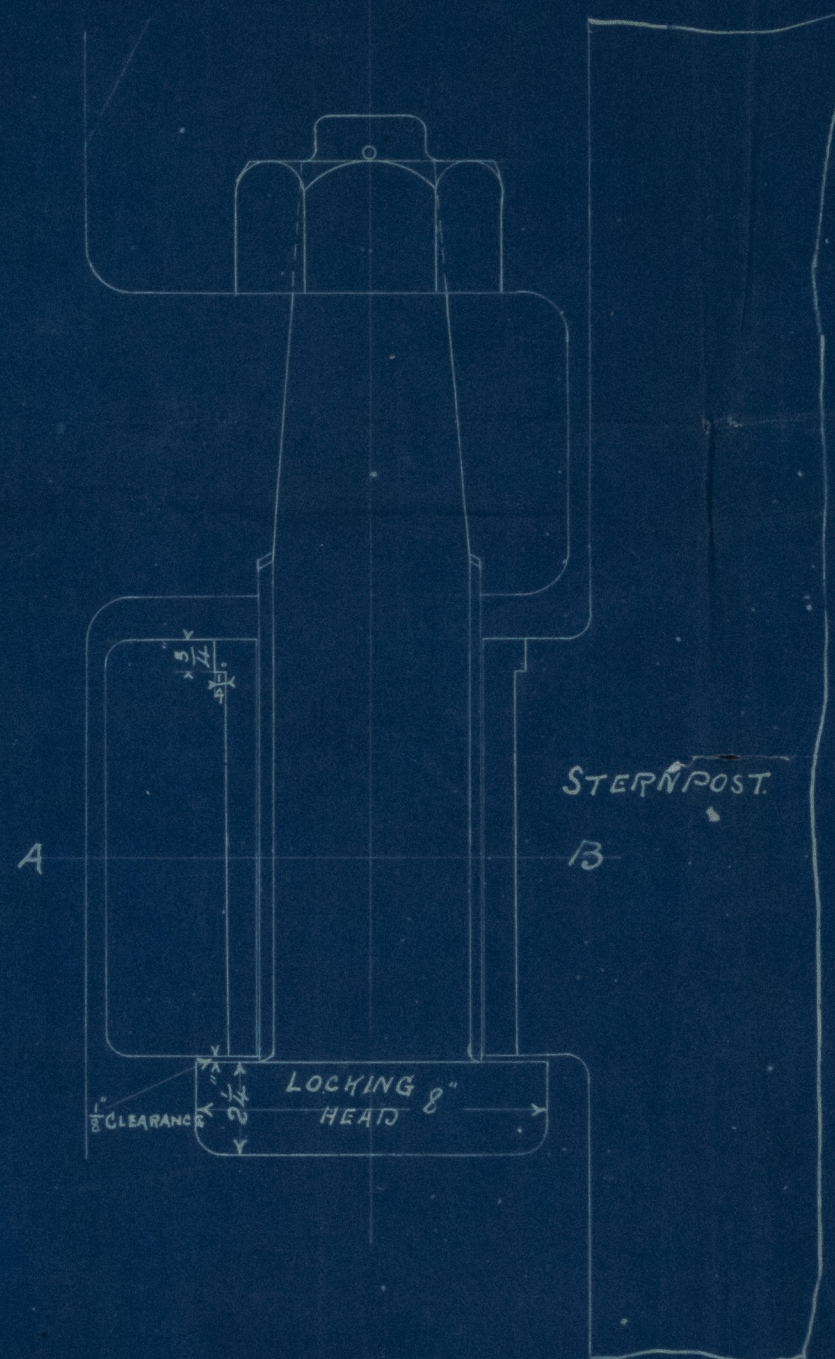


R. WAPIER & SONS, Limited.

*Gullap*  
1st Cpl. 1898

**TOP PINTLE**

**1 OFF**



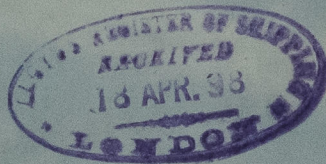
LOCKING 8" HEAT

*ABW*  
16-4-98



© 2021  
Lloyd's Register  
Foundation





R. Napier & Sons

N-465.

Cast Steel Single Plate  
Rudder Pintles.



© 2021

Lloyd's Register  
Foundation