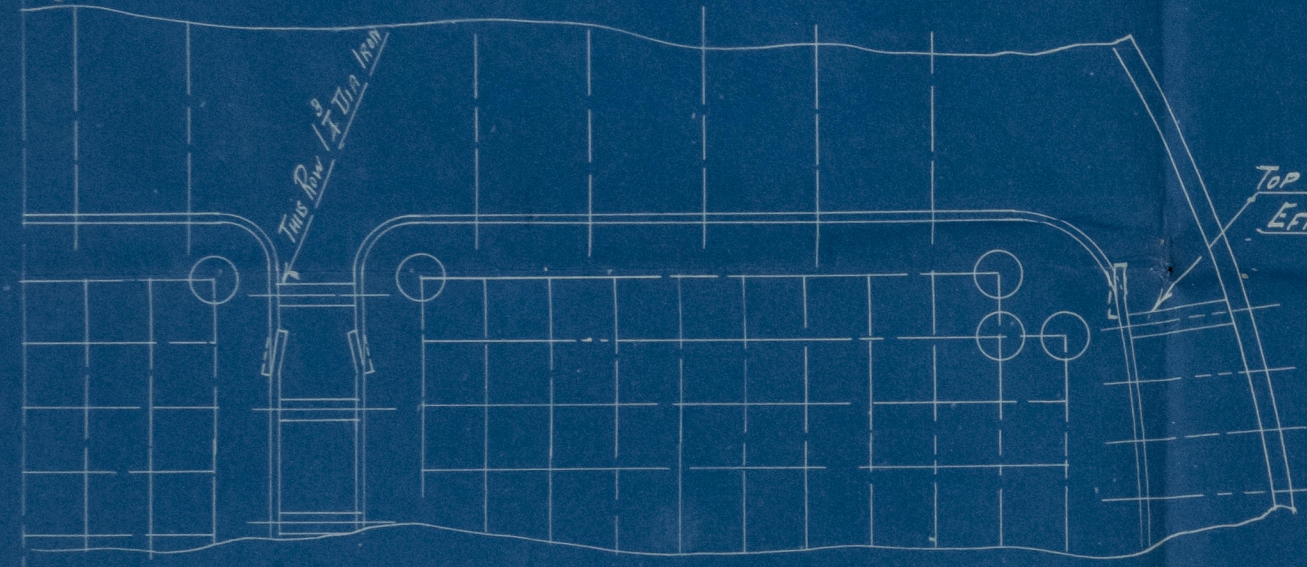
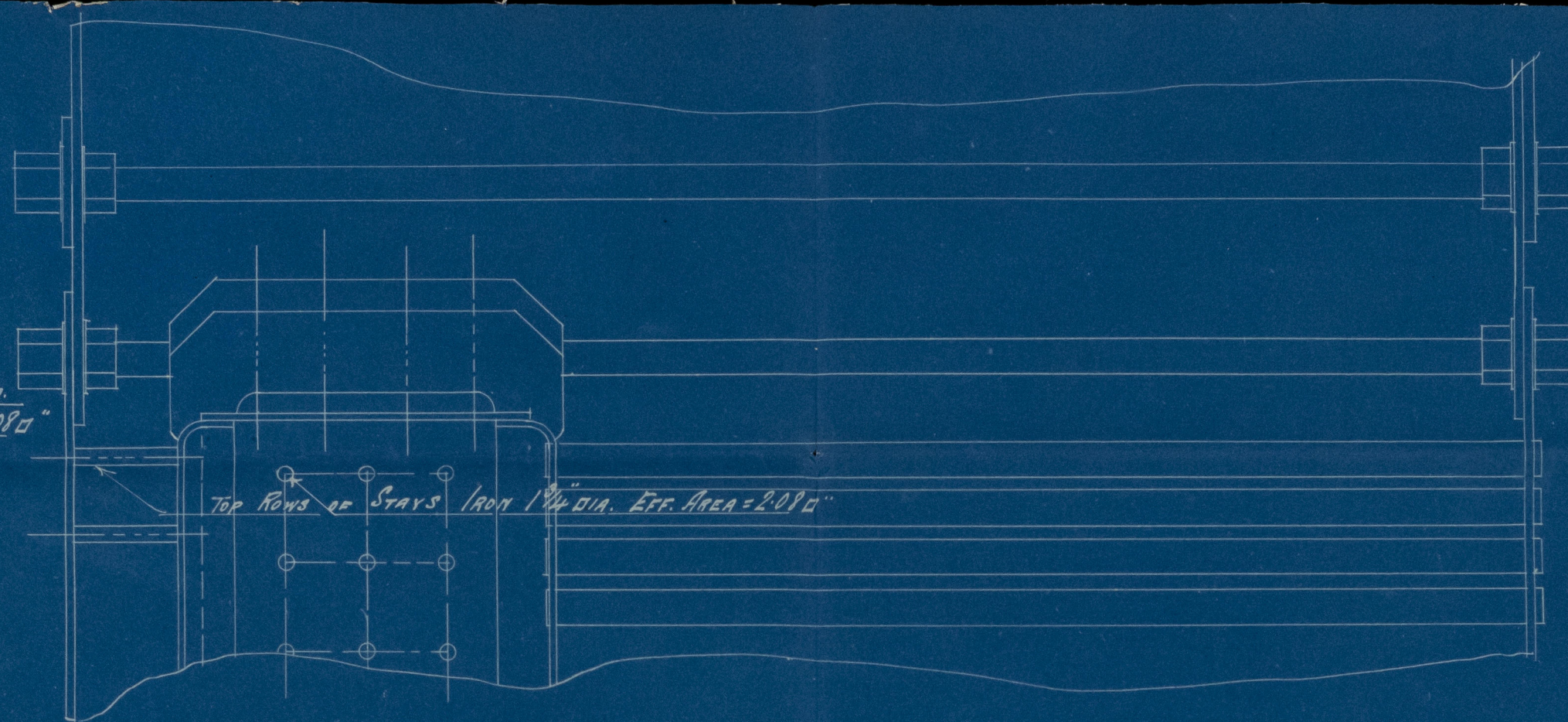


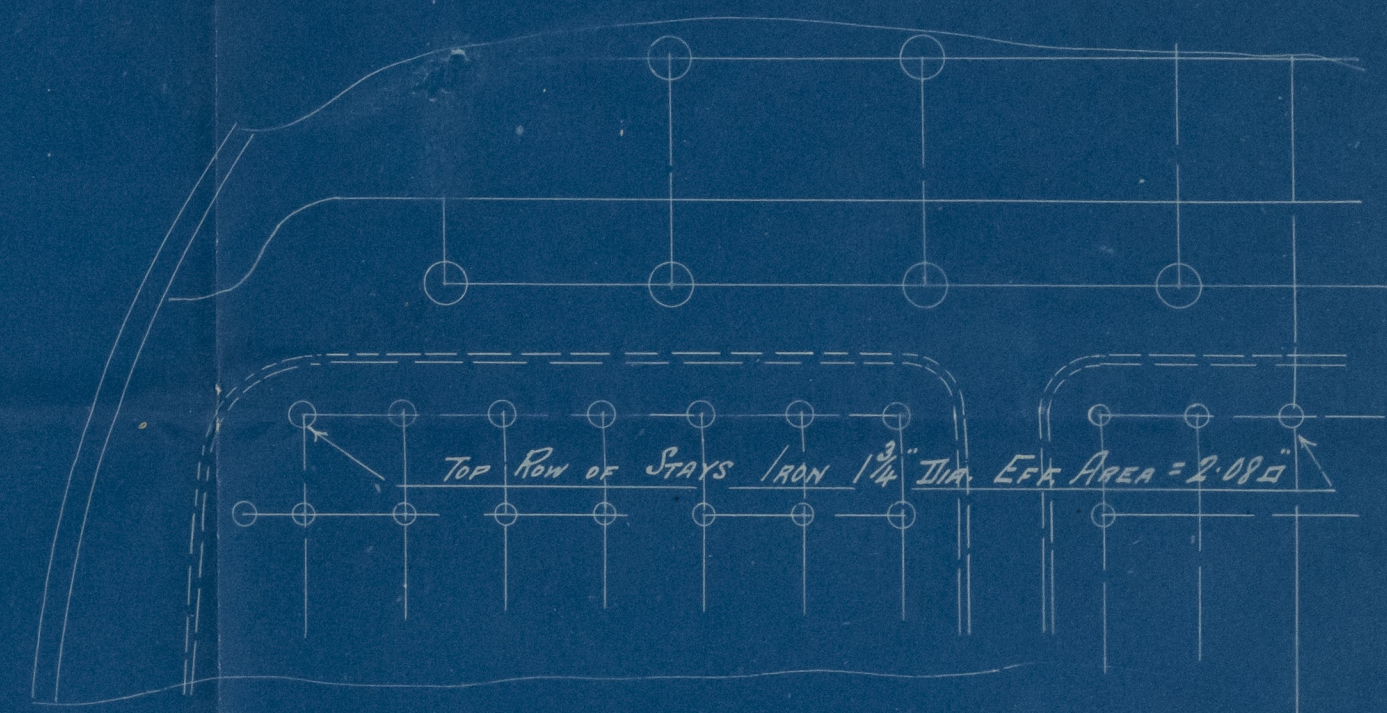
21/12/97
21/12/97



TOP ROW $1\frac{3}{4}$ " DIA.
EFF. AREA = 2.08 sq"



TOP ROWS OF STAYS IRON $1\frac{3}{4}$ " DIA. EFF. AREA = 2.08 sq"

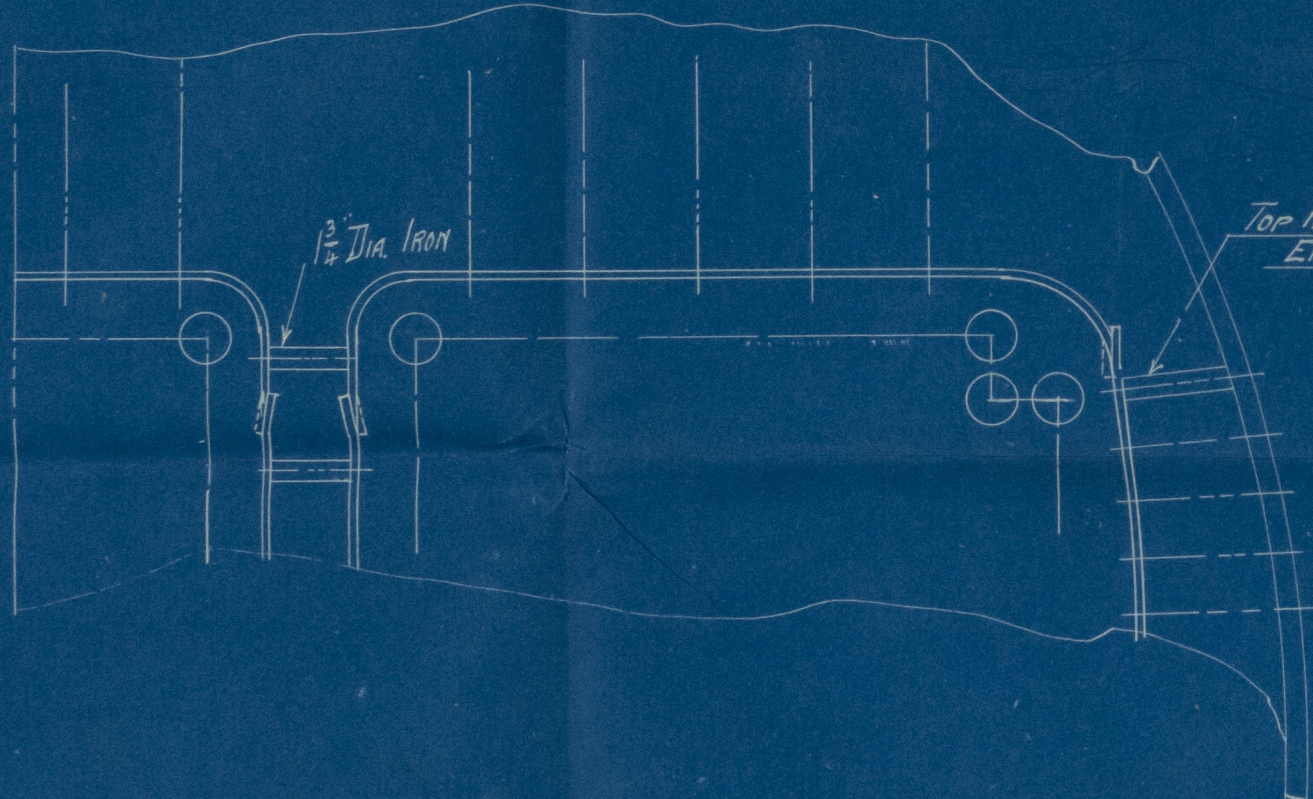


TOP ROW OF STAYS IRON $1\frac{3}{4}$ " DIA. EFF. AREA = 2.08 sq"

ALTERATION TO TOP ROWS OF COMBUSTION CHAMBER STAYS.
BEING MADE OF IRON INSTEAD OF STEEL

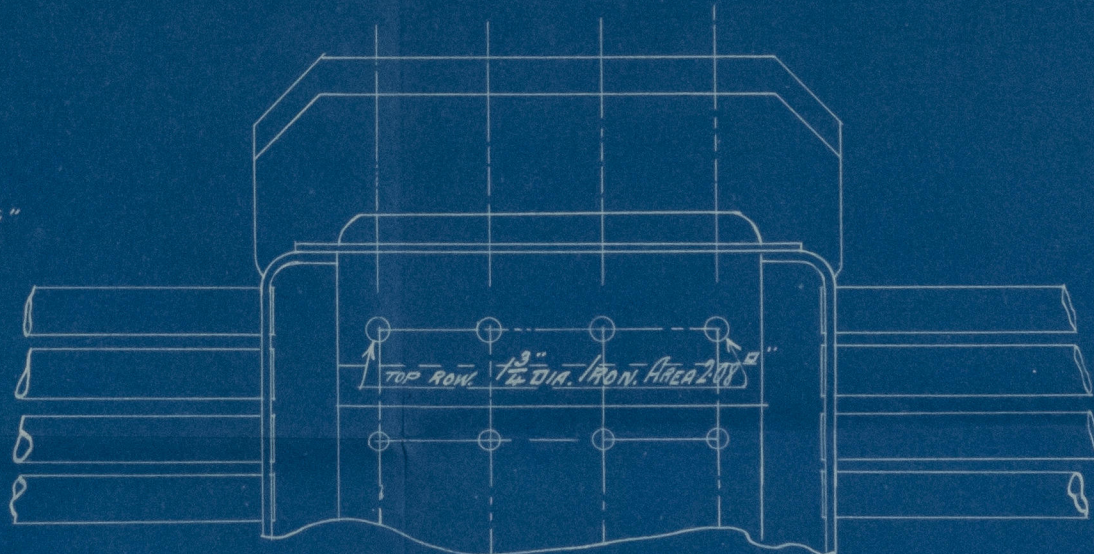
Nº 303-6 SINGLE END BOILER

3-



$1\frac{3}{4}$ " DIA. IRON

TOP ROW $1\frac{3}{4}$ " IRON
EFF. AREA = 2.08 sq"



TOP ROW $1\frac{3}{4}$ " DIA. IRON AREA 2.08 sq"

Nº 303-6 DOUBLE END BOILER

20.12.97

15/12/97

16/12/97

R

21
400-41579

S.S. Maplemore
Liverpool

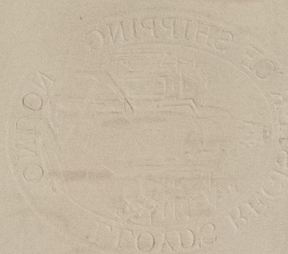
Is. Rpt. No. 16763
Combustion Chamber
stays.

sister vessel to
S.S. Linemore
Gls 16537.

4600-4E2517



Amended Plan of
Drawings N^o 303-6
Cornells 242-4



© 2021

Lloyd's Register
Foundation