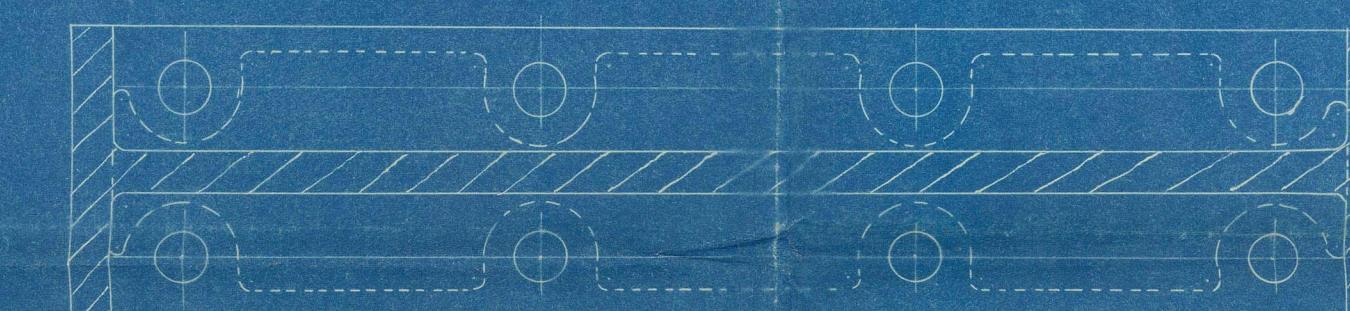
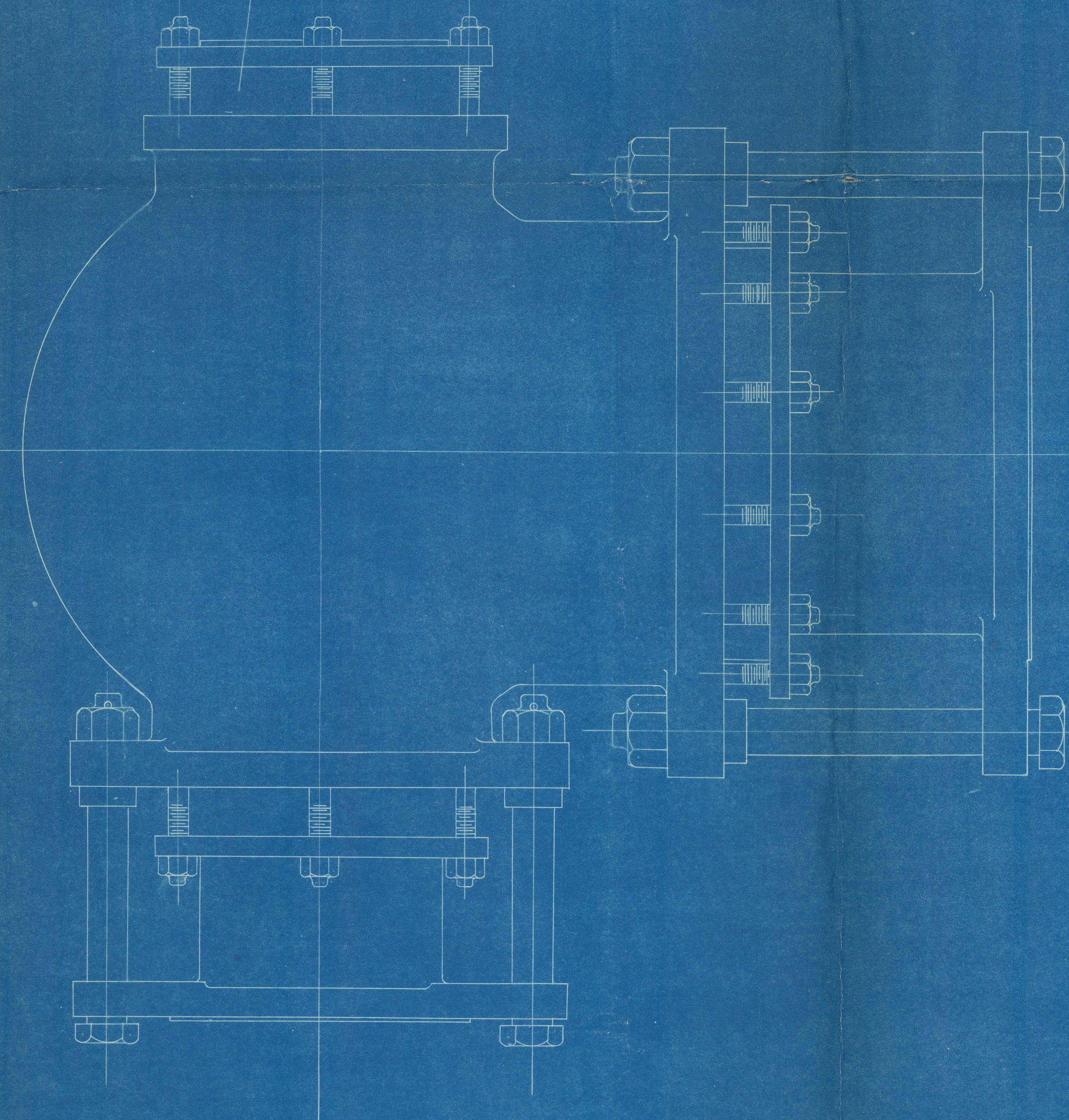
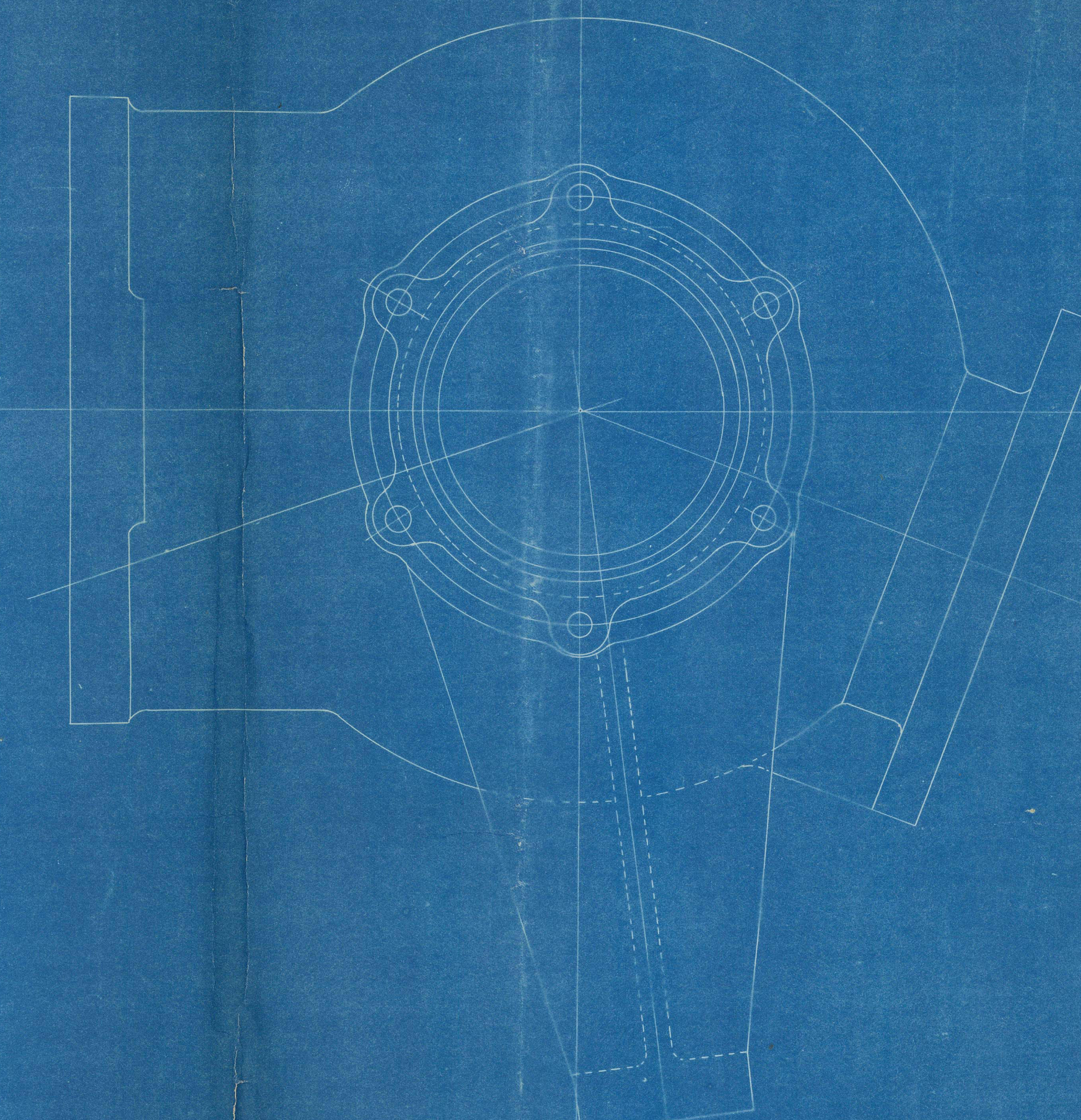
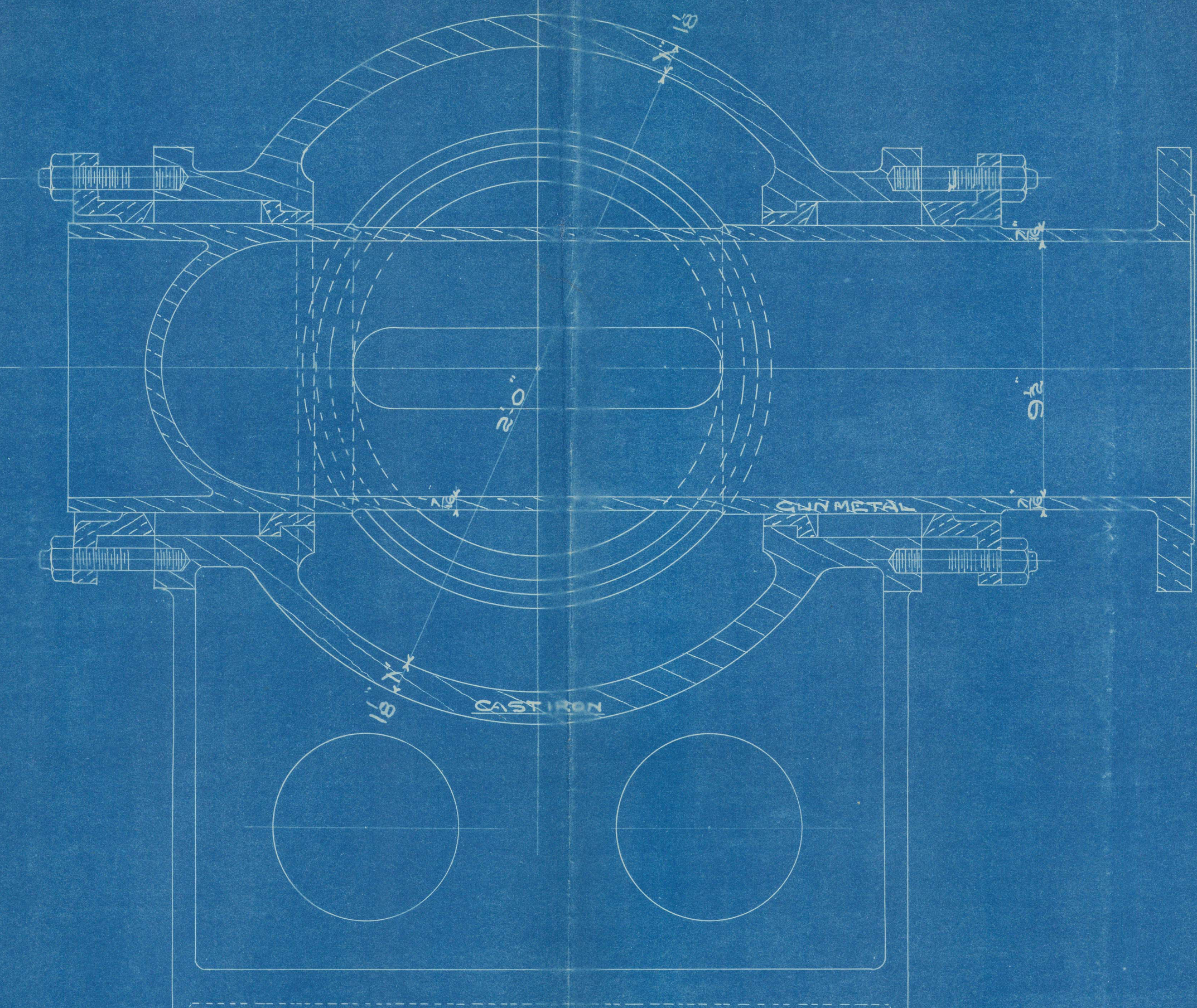
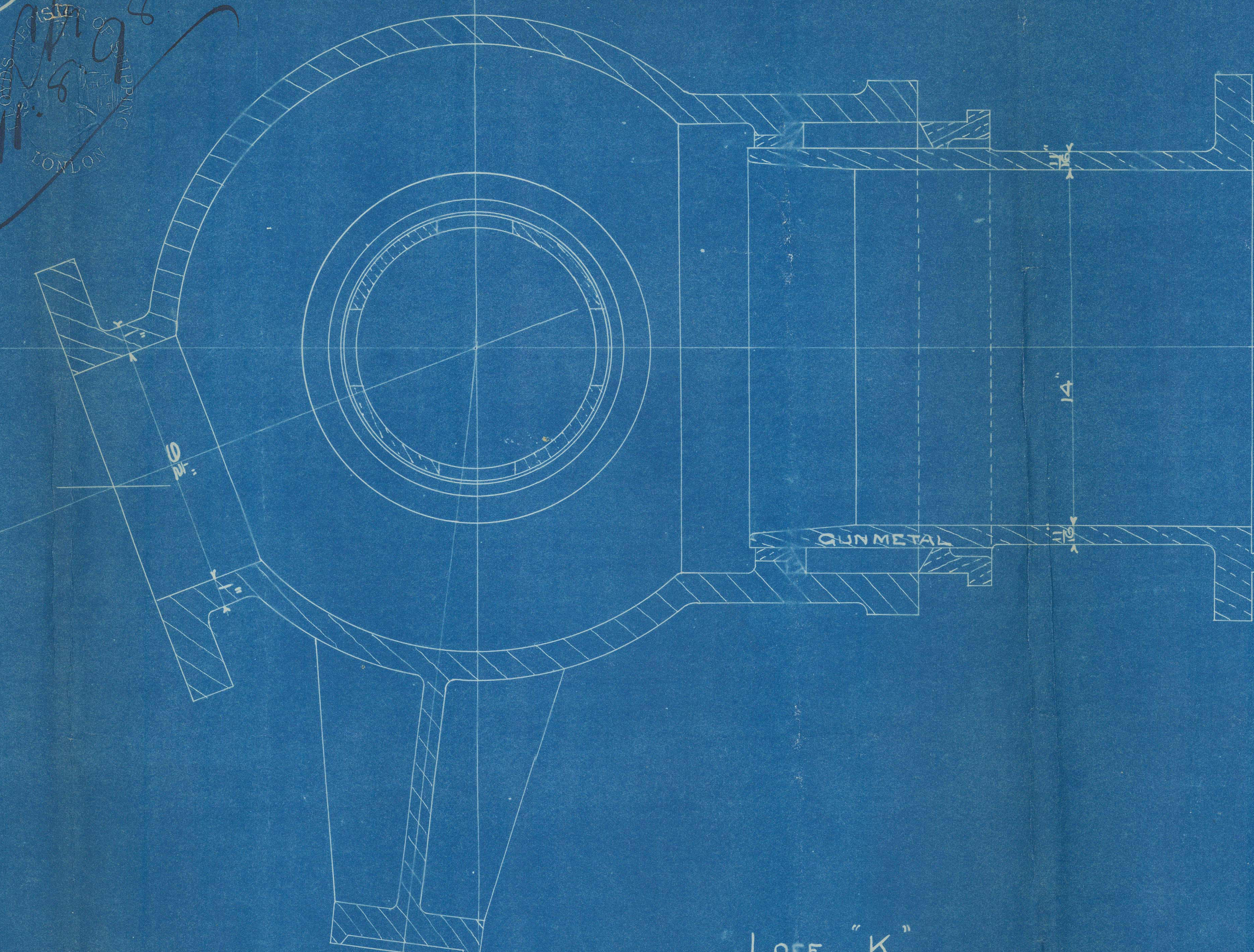
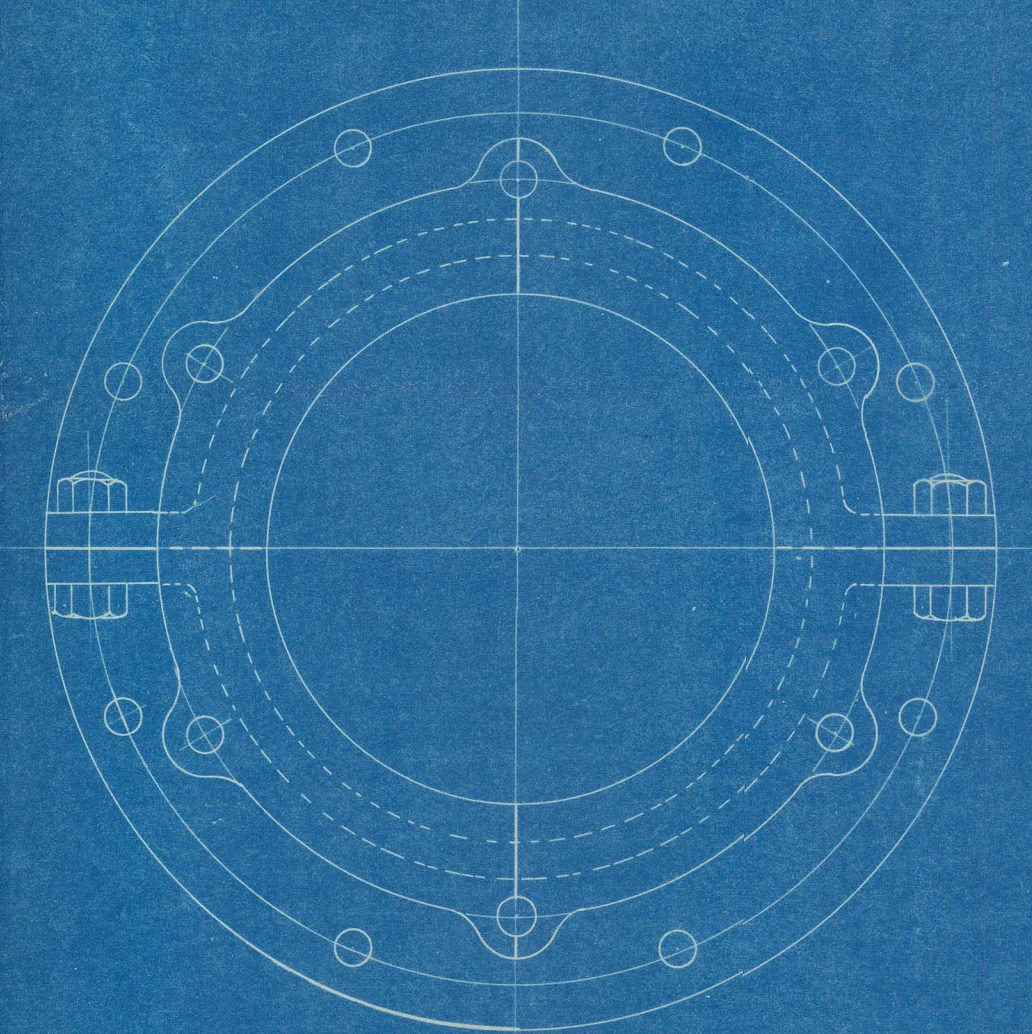


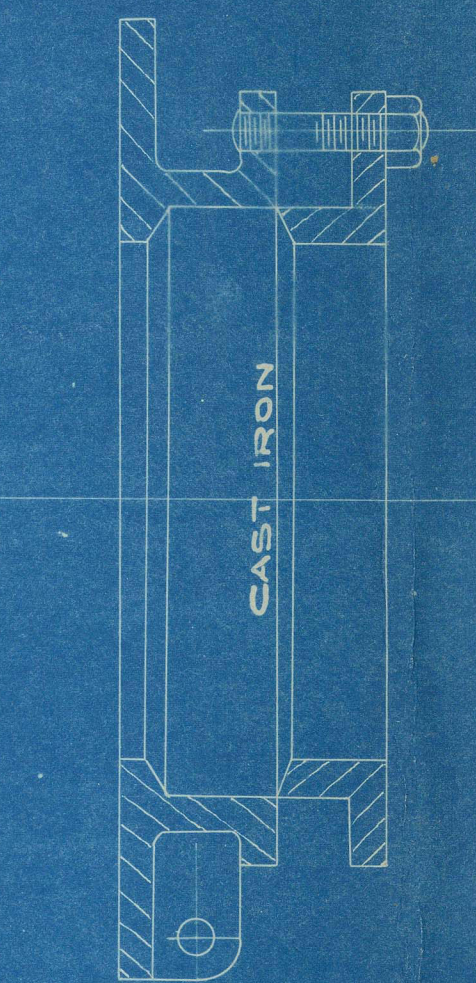
11/19/18  
LONDON



TEST PRESSURE 540 LBS PER SQ. INCH



BULKHEAD GLAND



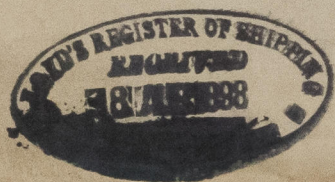
T.1425.

W. J. M. 1898

Modified to suit G.P. requirements  
 — MAIN STEAM PIPES VALVES & TEE PIECES —  
 — ENGINES No 404 —  
 — SCALE 3" = 1 FOOT —  
 5 SHEETS SHEET 3







Fairlea styly 68 n<sup>o</sup> 404/5

Plan of Stop valves in K

This is the same form found in Texas  
 of plant  
 S. S. "Emrah"

Js. Apt. No. 16687

GLS273-0044