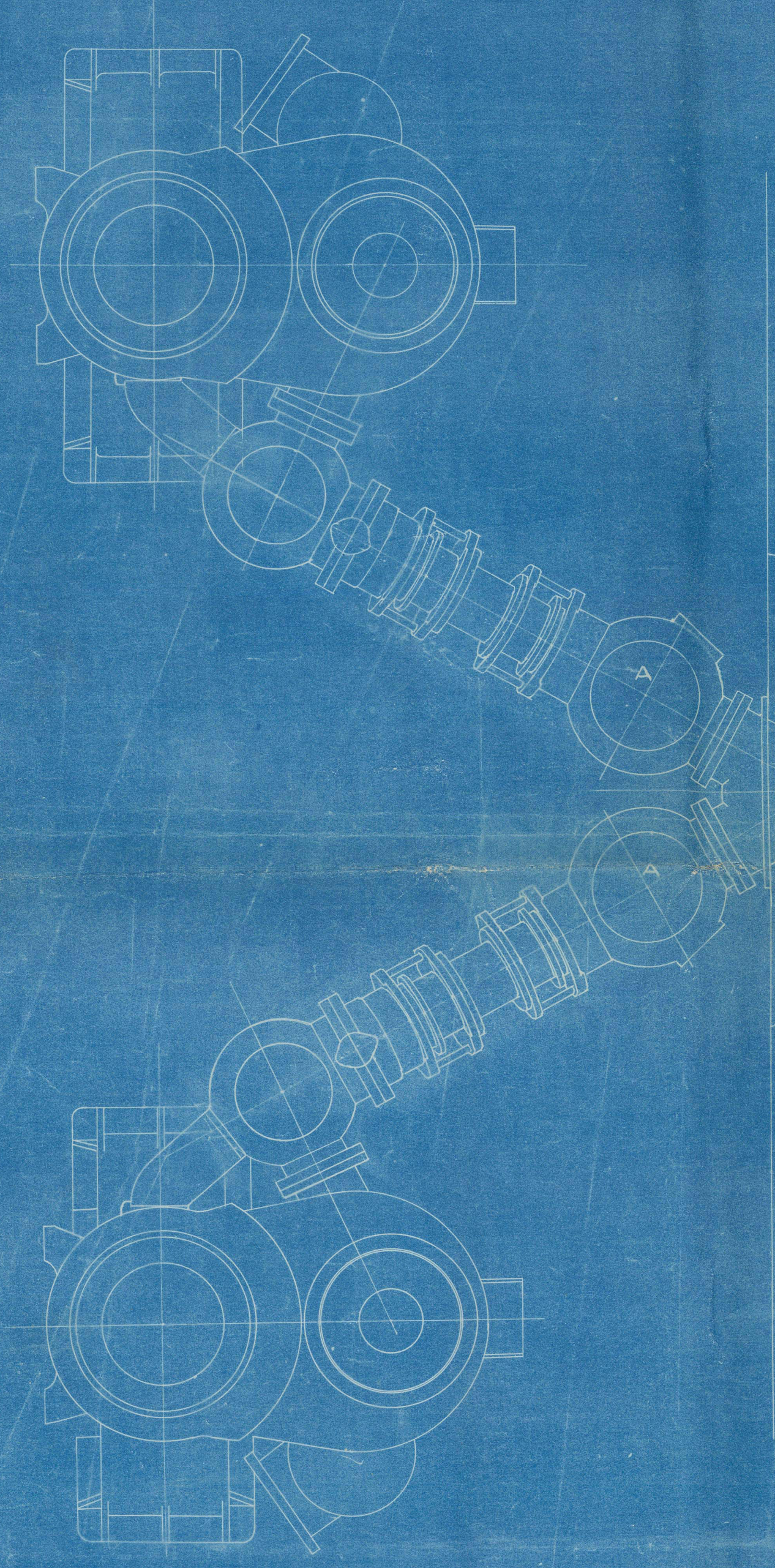
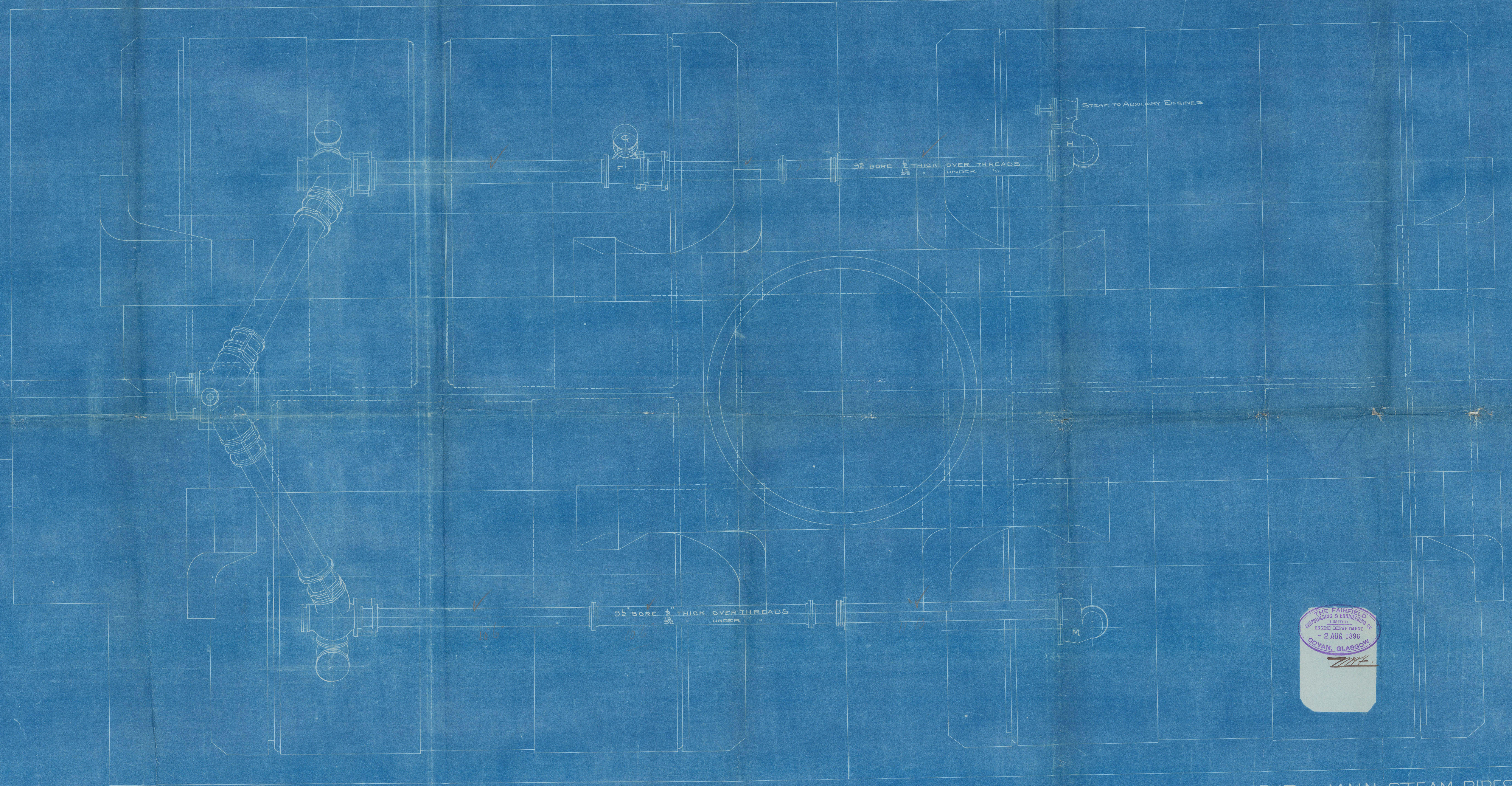


11.8.98



Working Pressure 180 LBS PER SQ. INCH  
TEST 540

15" BORE 15" THICK AT BOTTOM OF THREAD



32" BORE 1/2" THICK OVER THREADS  
UNDER

32" BORE 1/2" THICK OVER THREADS  
UNDER

STEAM TO AUXILIARY ENGINES



11.8.98

ARRANGEMENT OF MAIN STEAM PIPES  
— ENGINES N° 404 —  
SCALE 1" = 1 FOOT

11.8.98





Fairfield St, May 6<sup>th</sup> 1844  
Precious Lines

Arrangement of steam pipes

S. S. "Omrah"

Sept. No 16687

2<sup>nd</sup> 16<sup>th</sup> 1848

1 - 14	dia	15 <sup>8</sup> / <sub>16</sub>	outside
1 - 13 <sup>15</sup> / <sub>16</sub>		15 <sup>7</sup> / <sub>16</sub>	
1 - 18 <sup>7</sup> / <sub>8</sub>		20 <sup>7</sup> / <sub>8</sub>	= 1 <sup>1</sup> / <sub>2</sub>
* 1 - 18 <sup>7</sup> / <sub>8</sub>		20 <sup>3</sup> / <sub>8</sub>	Bad weld
1 -			

\* Retained by the same