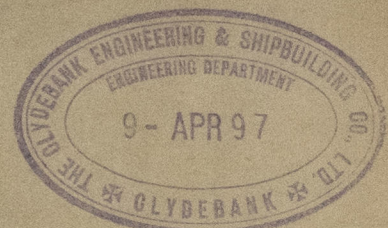
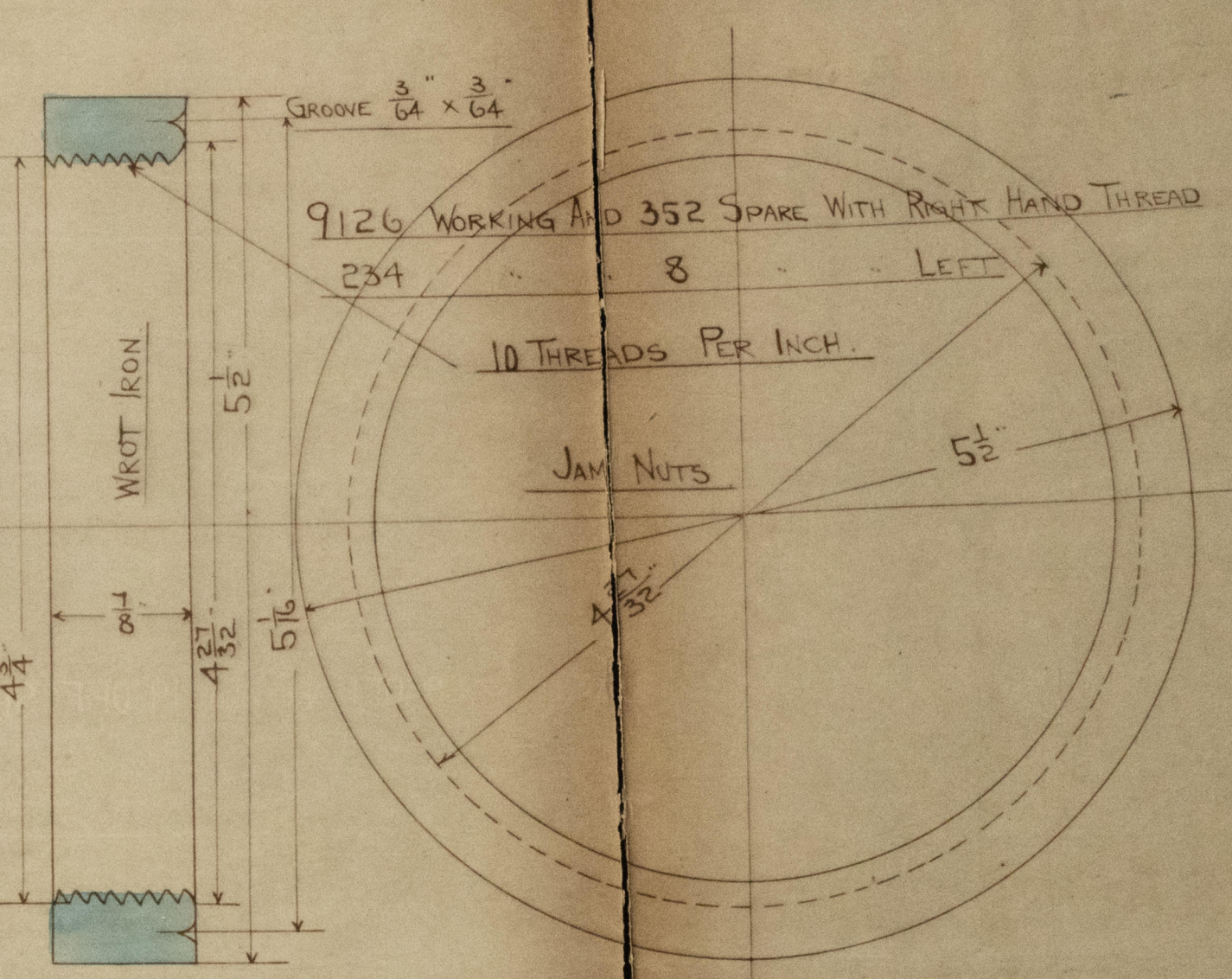
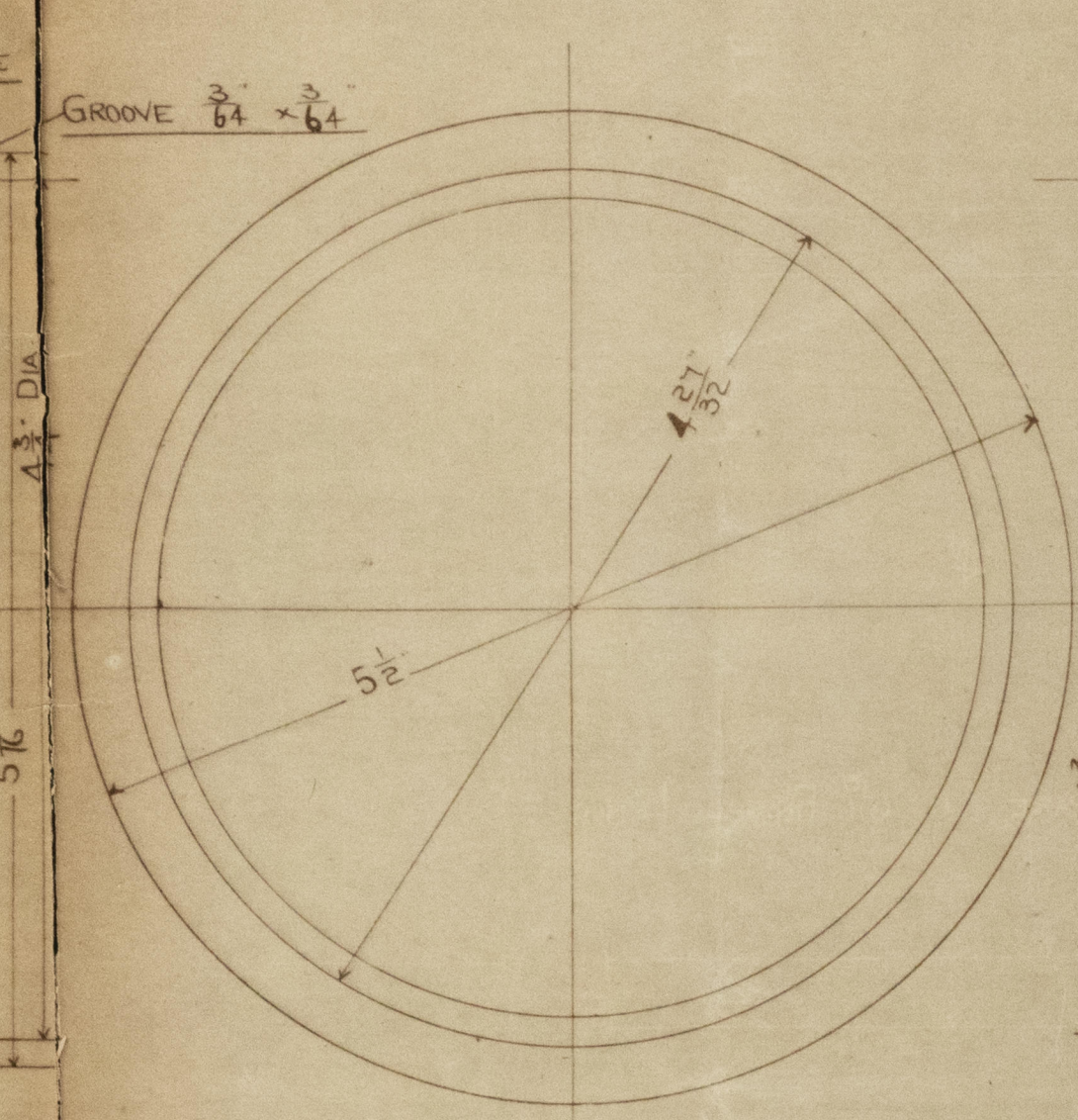
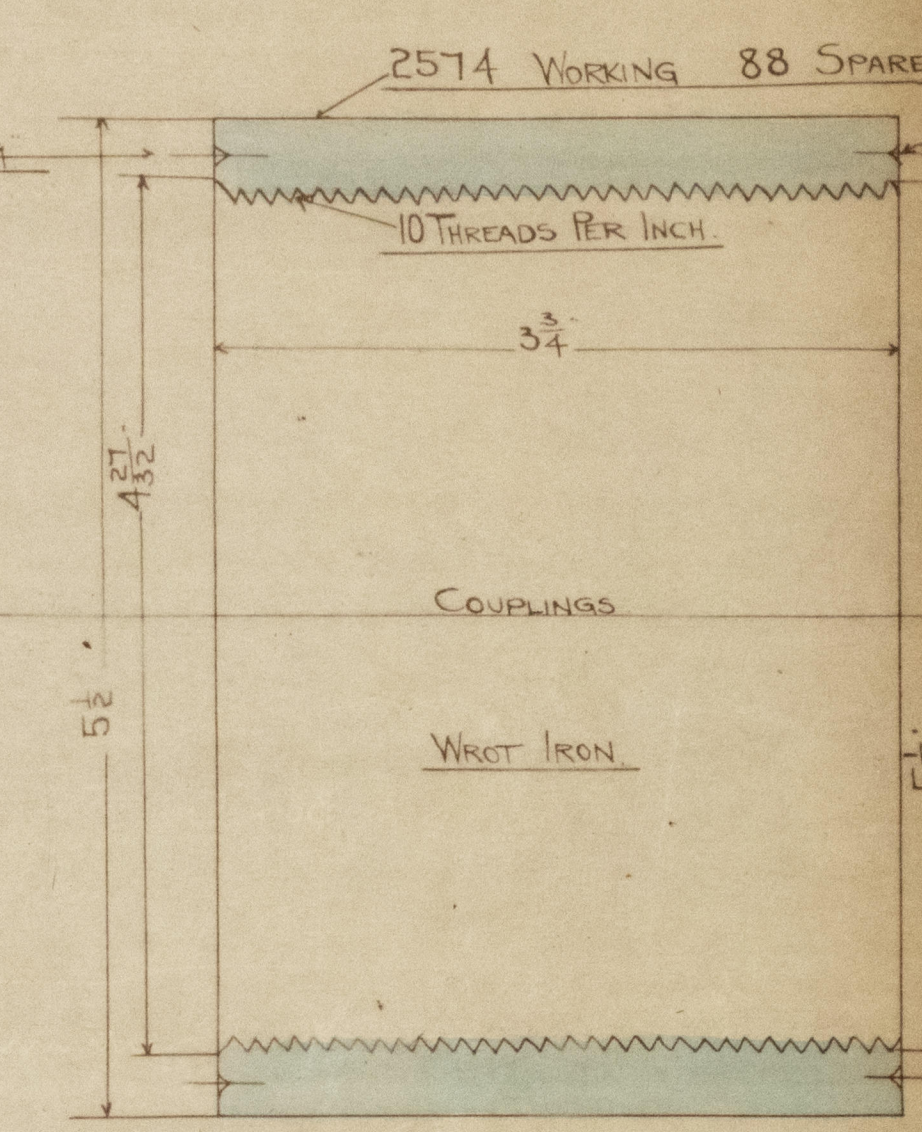
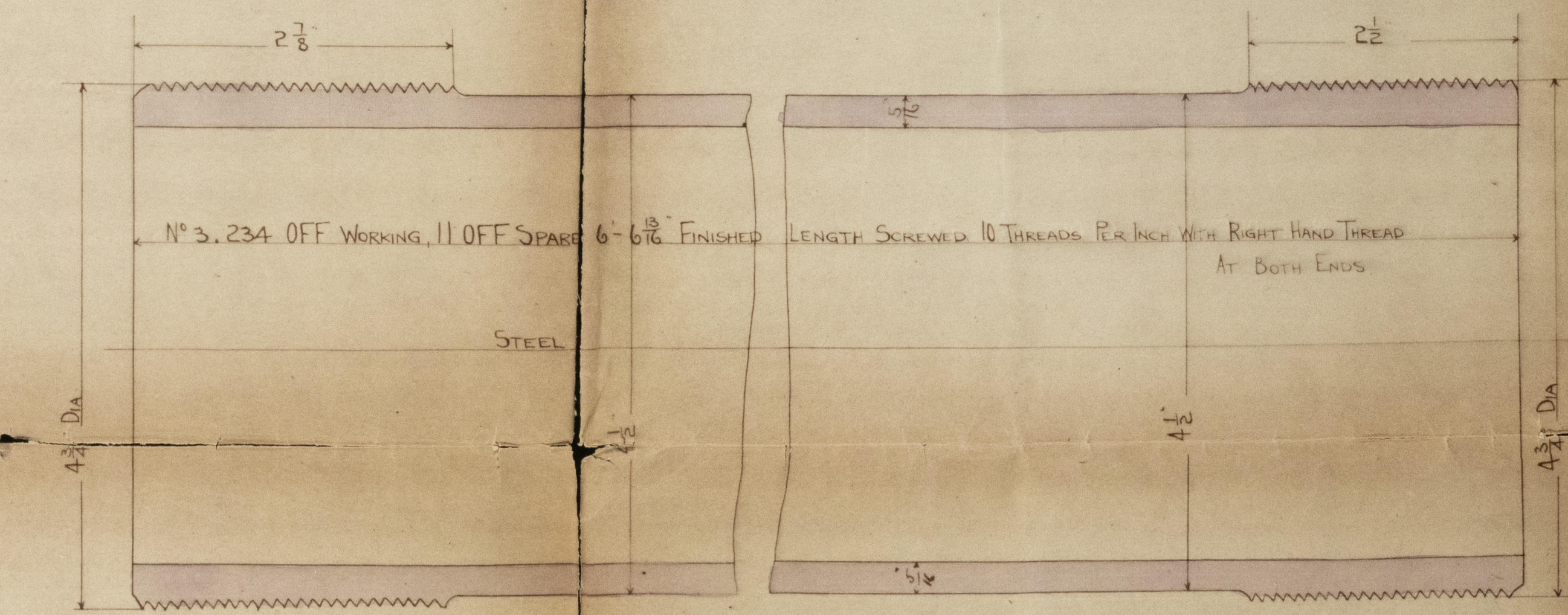
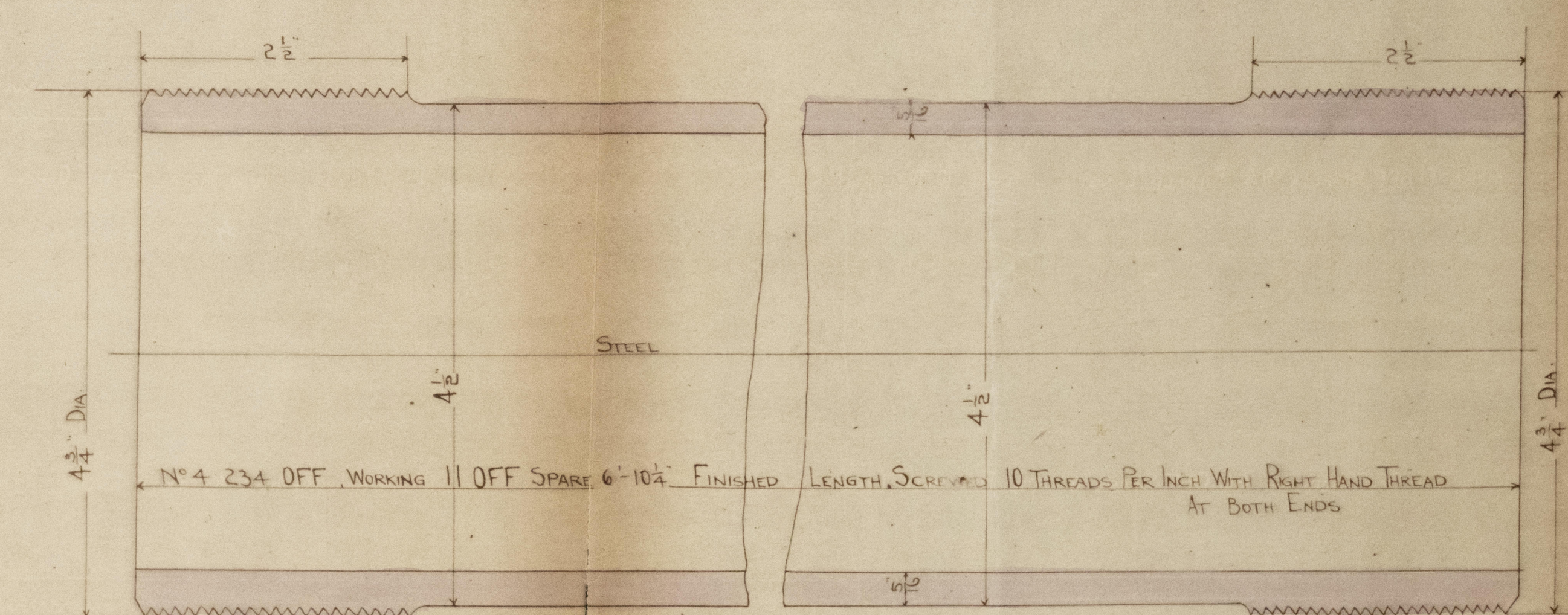
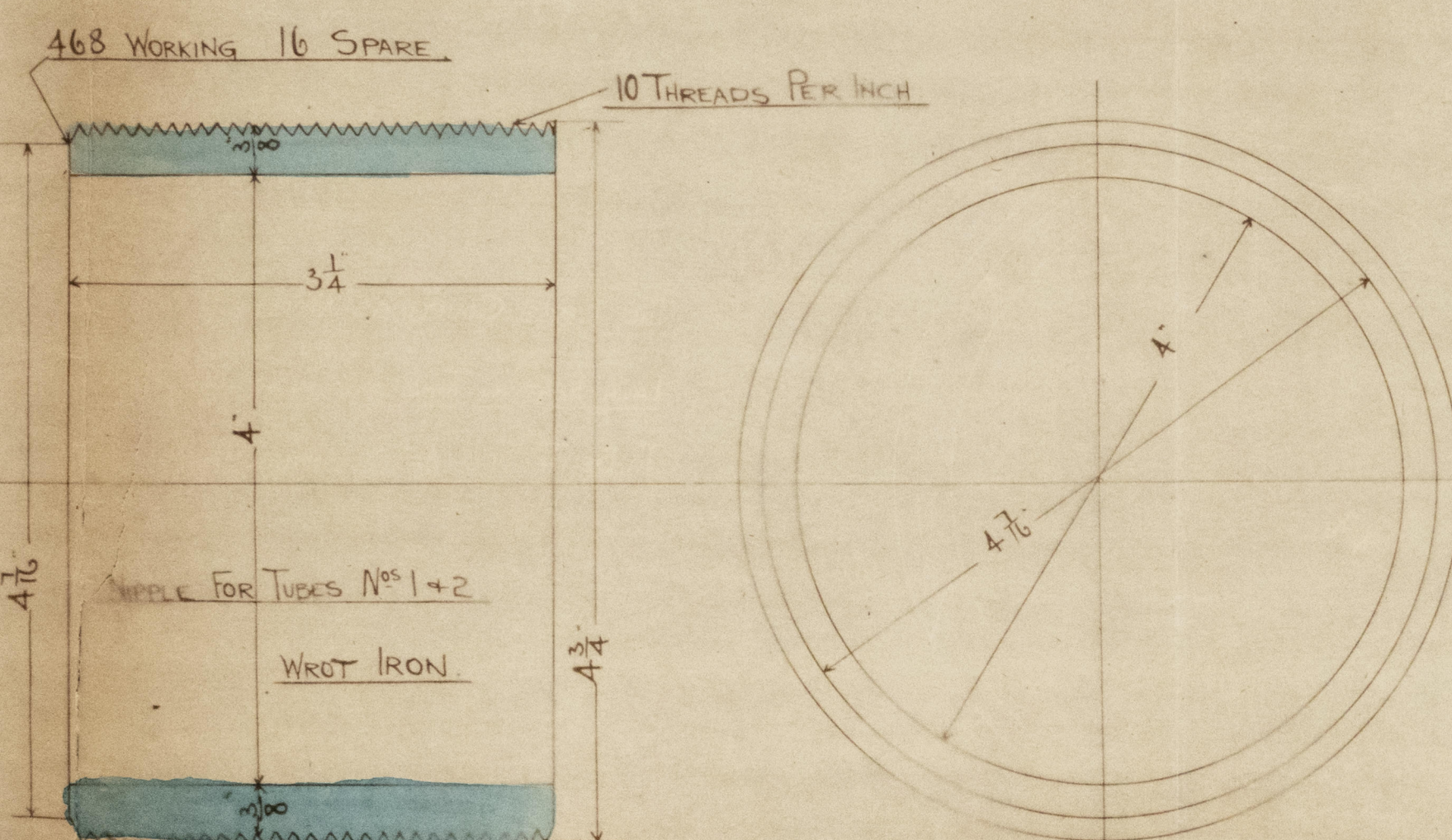
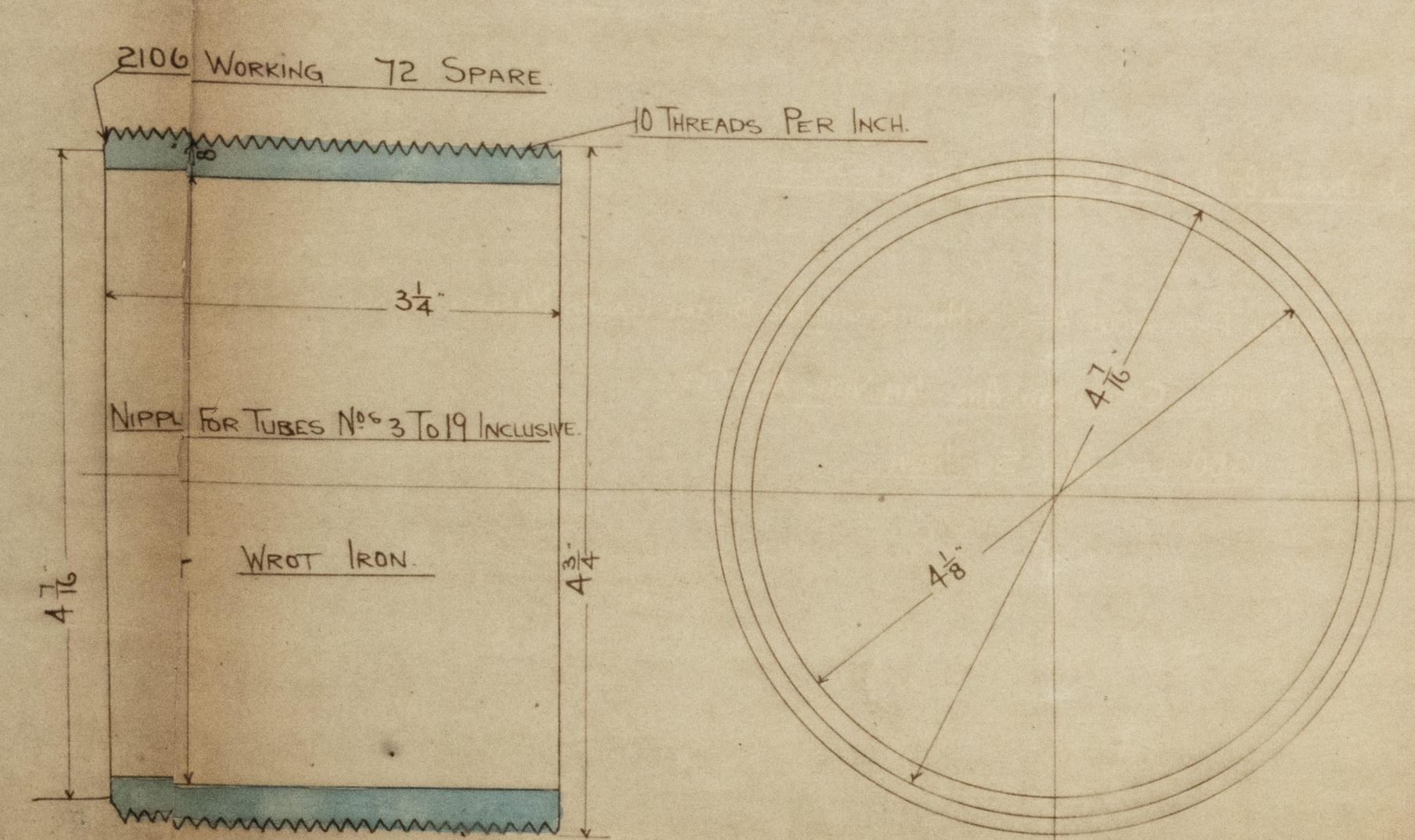
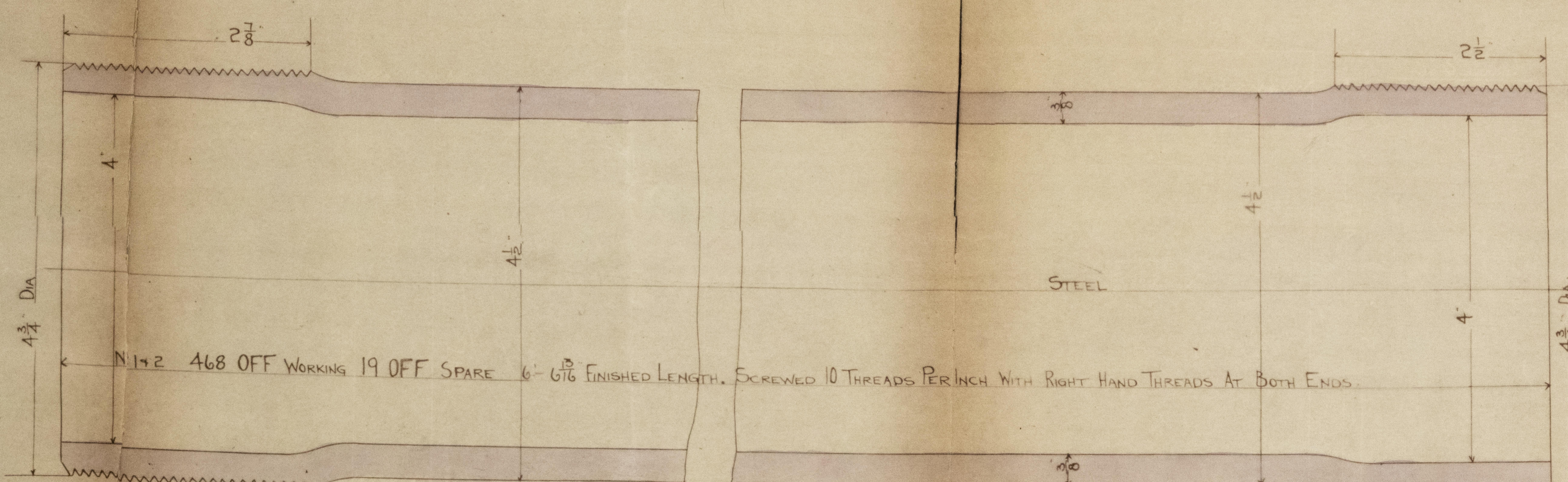
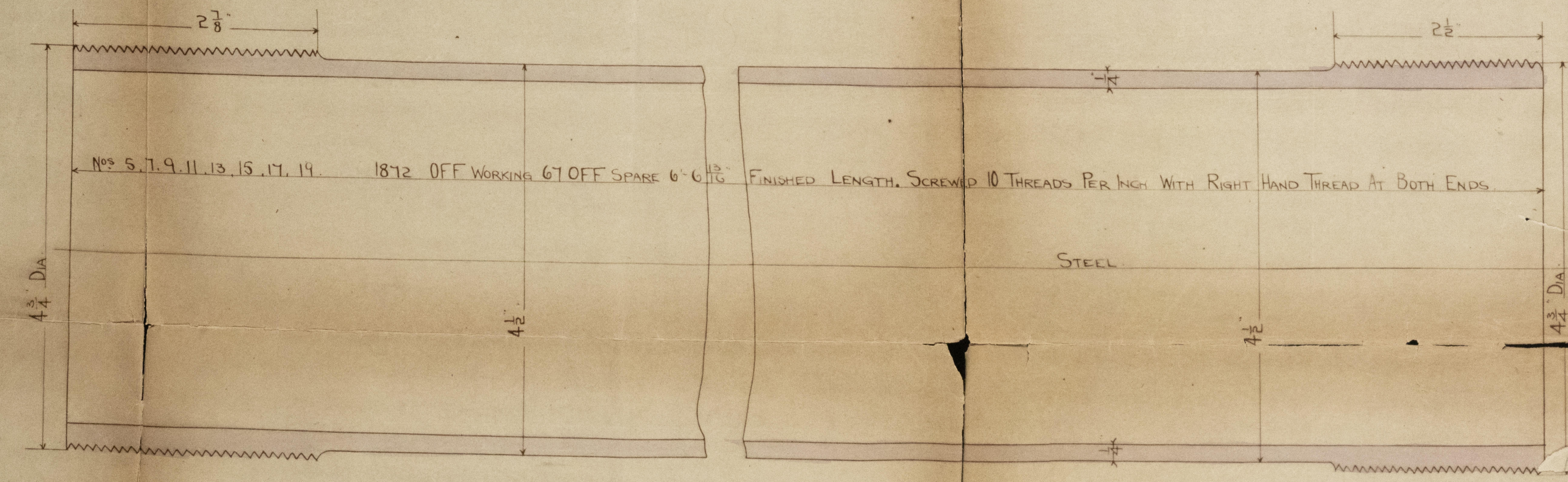
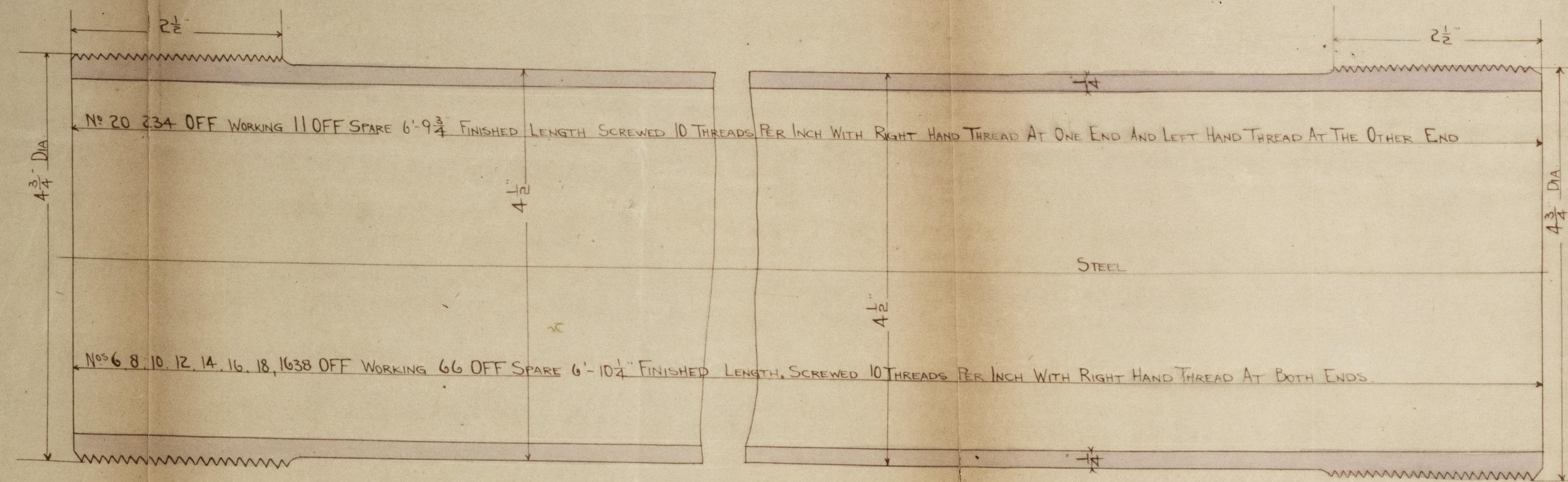


— BELLEVILLE BOILERS N° 307 —  
— TUBES NIPPLES COUPLING & JAM NUTS —

13/4/97



— FULL SIZE —



408 OFF WORKING 16 SPARE TO BE SHUNK ON  
TUBES N° 11 + 16. FOR POSITION SEE ARRANGEMENT  
OF TUBES  
FERRULES TO BE SHUNK ON BEFORE ENDS ARE BOSS UP

TUBES TO BE SOLID DRAWN, OF ACID OR BASIC OPEN HEARTH STEEL

THE TUBES, COUPLINGS, NIPPLES AND JAM NUTS TO BE ANNEALED THROUGHOUT AFTER MANUFACTURE AND BEFORE LEAVING MAKERS WORKS.  
EACH HEATING TUBE AND ALSO THE TUBES FROM WHICH THE NIPPLES, COUPLINGS AND JAM NUTS ARE CUT.  
TO BE TESTED AFTER ANNEALING BY WATER PRESSURE TO 1500 LBS PER SQ INCH.

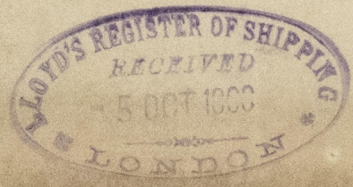
LLOYDS COPY

GLS270-0084



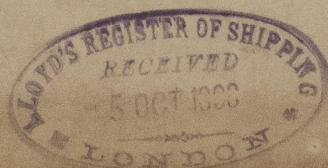
GL5270-0084

Chidebank & Co's  
No. 307. 28. "Moshin"  
Regd. No. 16439





Clydebank & Co's  
No. 307. ss. "Moskva"  
Jas Rpt. No. 16439



GLS20-0084



© 2021

Lloyd's Register  
Foundation