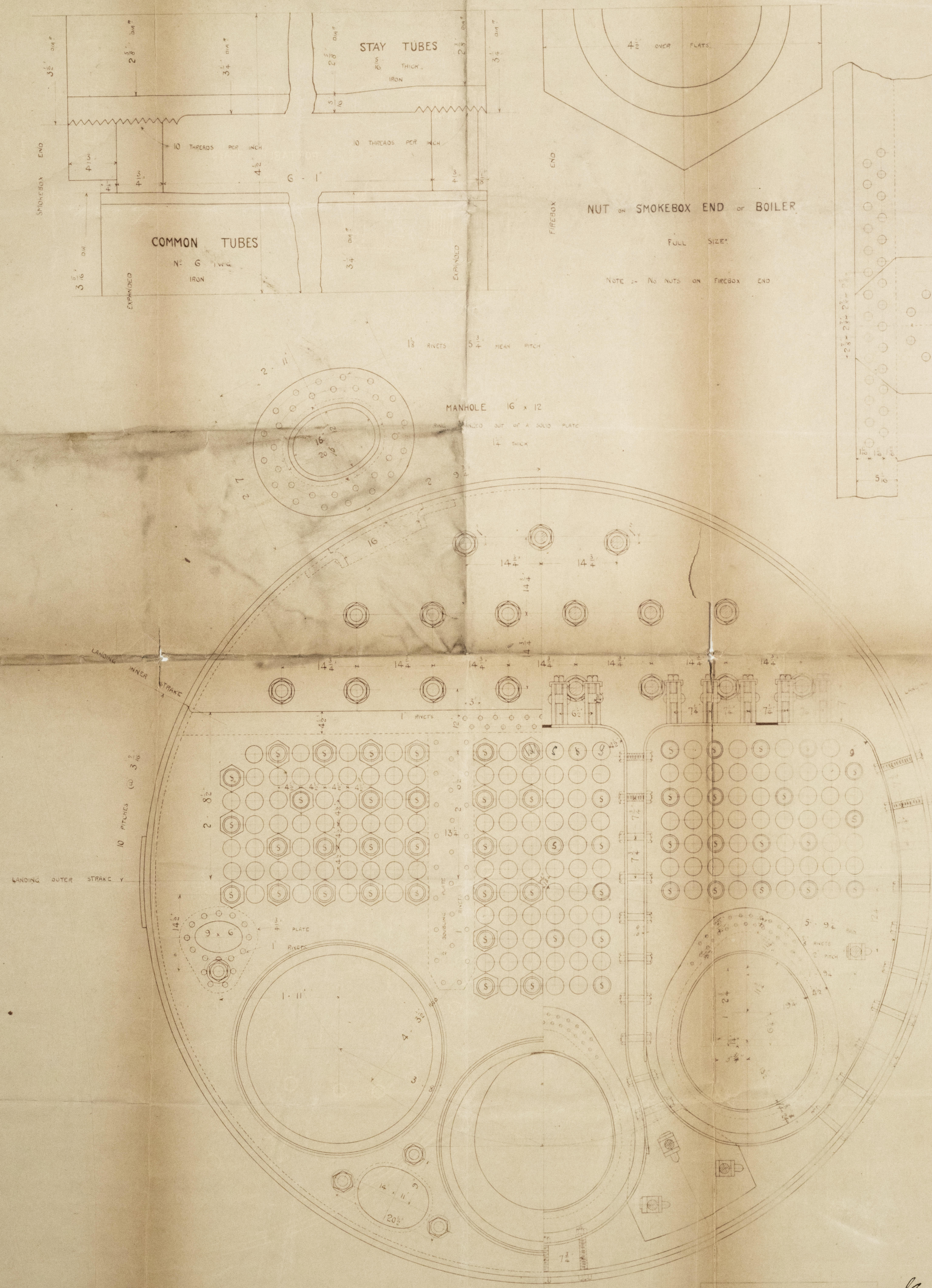


*2:6.97*

# DONKEY BOILER

N° 307

SCALE 1" = 1' FOOT



DONKEY BOILER	
STAY TUBES WITH NUTS	55
COMMON TUBES	136
TOTAL	191

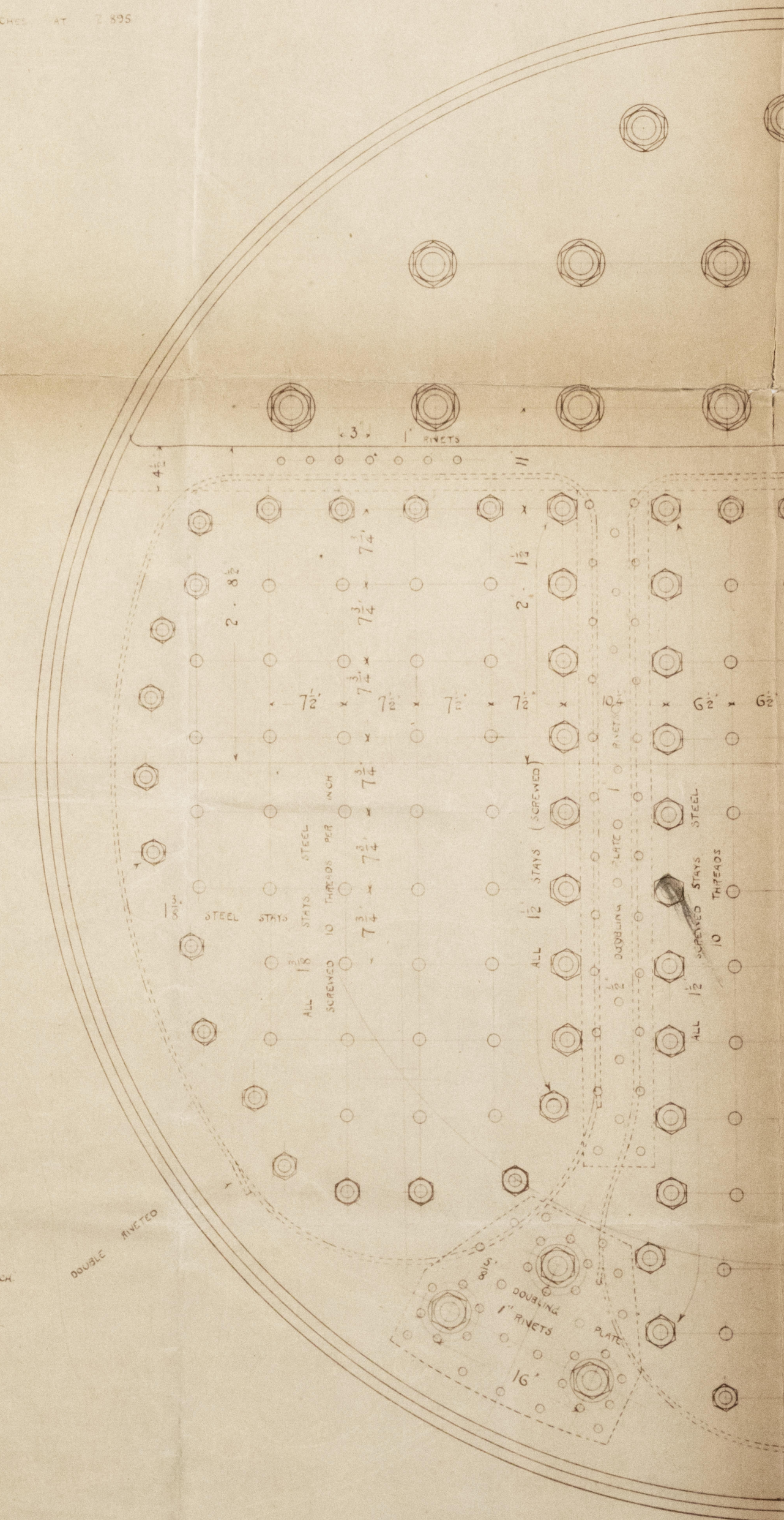
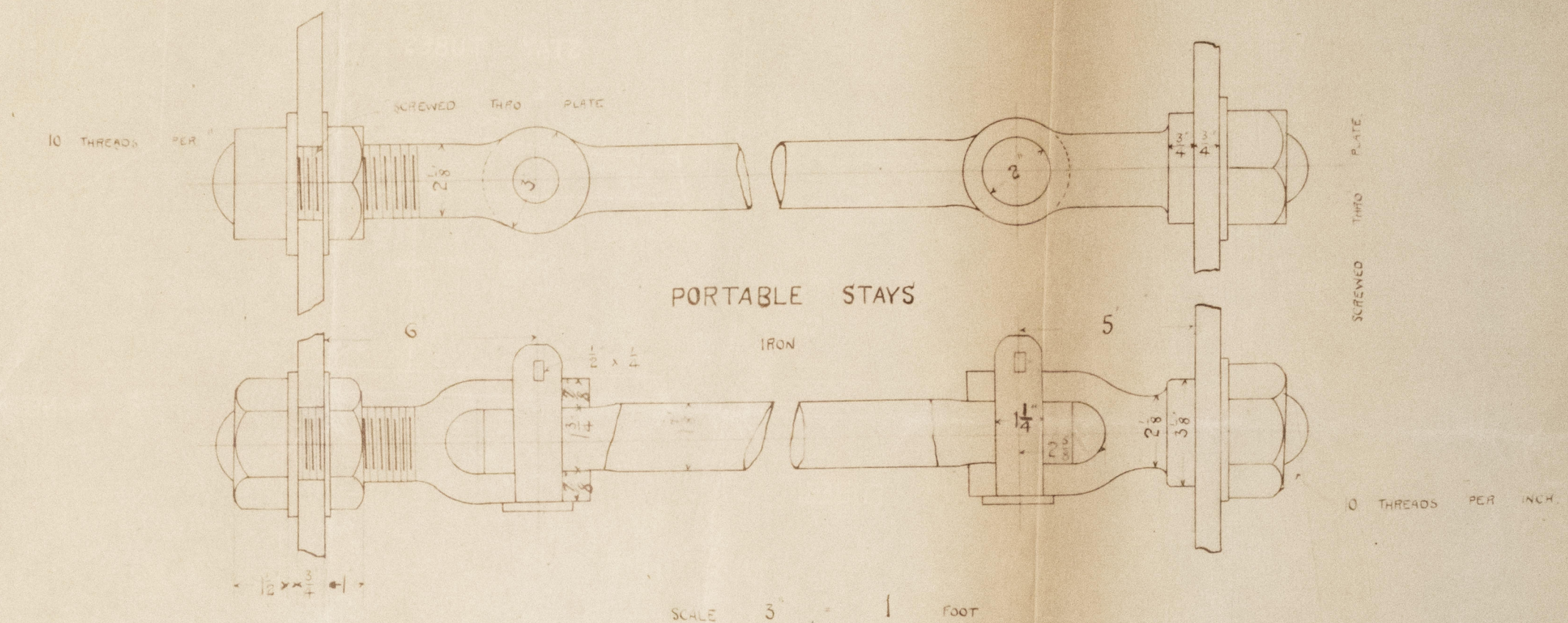
THICKNESS	PLATING
SEAM	1/2"
ENDS	1/2"
PLATE	1/2"
SMOKEBOX	1/2"
SMOKEBOX DOOR	1/2"
SMOKEBOX DOOR	1/2"
SMOKEBOX DOOR	1/2"

*McAlister*  
*3/10/97*

PRESSURE 100 LB. PER SQ. IN.  
320 LB. PER SQ. IN.

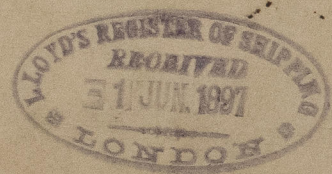
PER SQ. IN. OF TRUSS AND LLOYD

WHITE SURFACE	IN FT.	1/2"
TUBE	371.5	
PLATE	272.5	
TOTAL HEATING	644.0	
STEAM CAPACITY	220	



CAS210-0081





G15270-0081

G1527

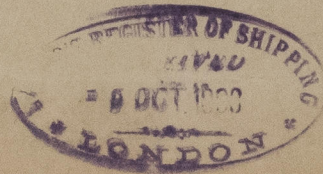


© 2021

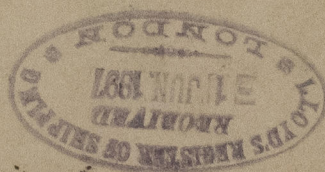
Lloyd's Register  
Foundation



Clydebank & S. Blois  
No. 307. S/S. "Moskva"  
Pls Rpt. No. 1439



GL527D-008/1800-013519



© 2021  
Lloyd's Register  
Foundation