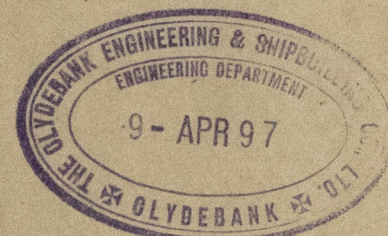
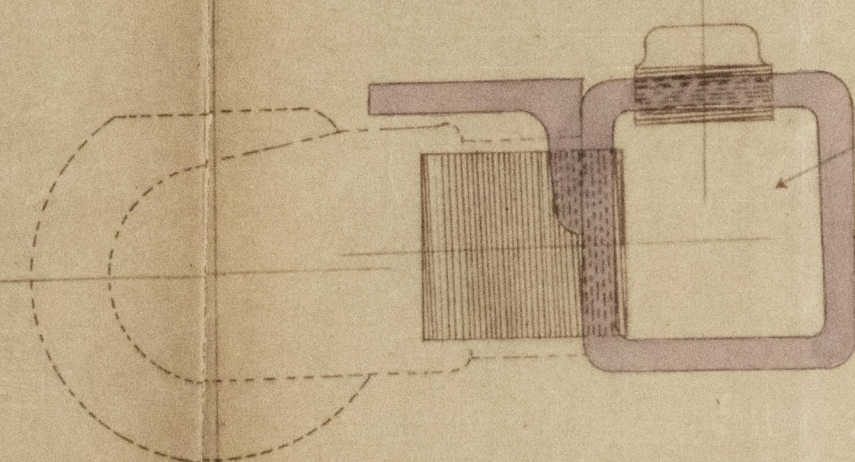


SCALE 3 INCHES = 1 FOOT

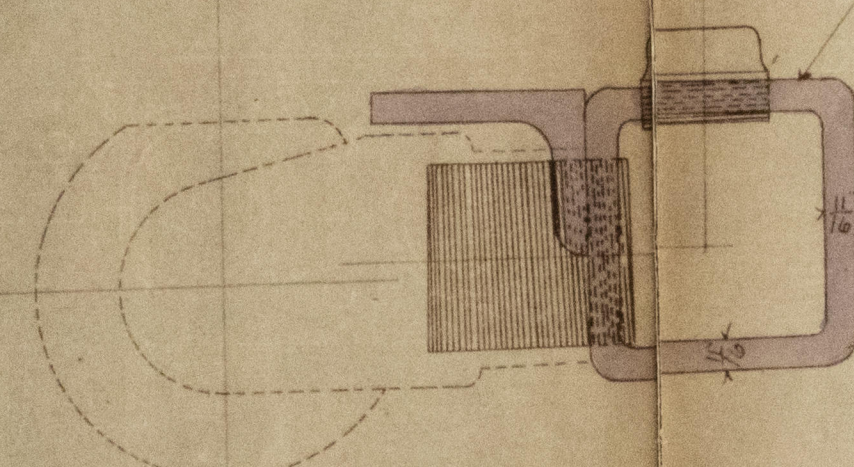


NOTE :- THE TUBES ARE MADE ROUND IN THE FIRST PLACE AFTER WHICH THEY ARE BROUGHT TO THE REQUIRED SECTION BY BEING PASSED THROUGH SPECIAL ROLLS



SECTION THRO' A.B.

NOTE :- THE TUBES ARE MADE ROUND IN THE FIRST PLACE,  
AFTER WHICH THEY ARE BROUGHT TO THE REQUIRED  
SECTION BY BEING PASSED THROUGH SPECIAL ROLLS.



SECTION THRO' A. B.

TO BE TESTED BY WATER PRESSURE, AFTER ANNEALING  
TO 1500 LBS. PER SQ. INCH

TO BE TESTED BY WATER PRESS. TO 1000 LBS. PER SQ. INCH AFTER BEING  
FITTED WITH NIPPLES ETC. AND BEFORE BEING FITTED IN PLACE

AND STUBS TO BE OF FORGED STEEL

NUTS TO BE OF IRON

FOR DIMENSIONS OF DETAILS SEE SEPARATE DRAWING

LLOYDS

GLS270-0080



LDM

GLS270-0080



© 2021

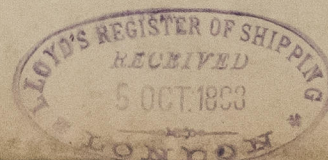
Lloyd's Register  
Foundation



Clydebank E.S.B. Co.

No. 307. S.S. "Moskva"

Essex No. 16439



© 2021

Lloyd's Register  
Foundation

GLS270-0080