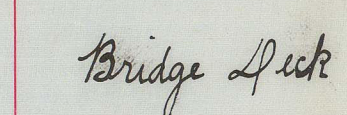
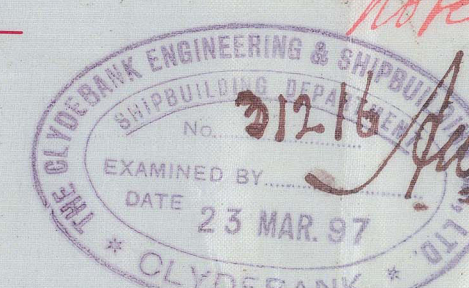
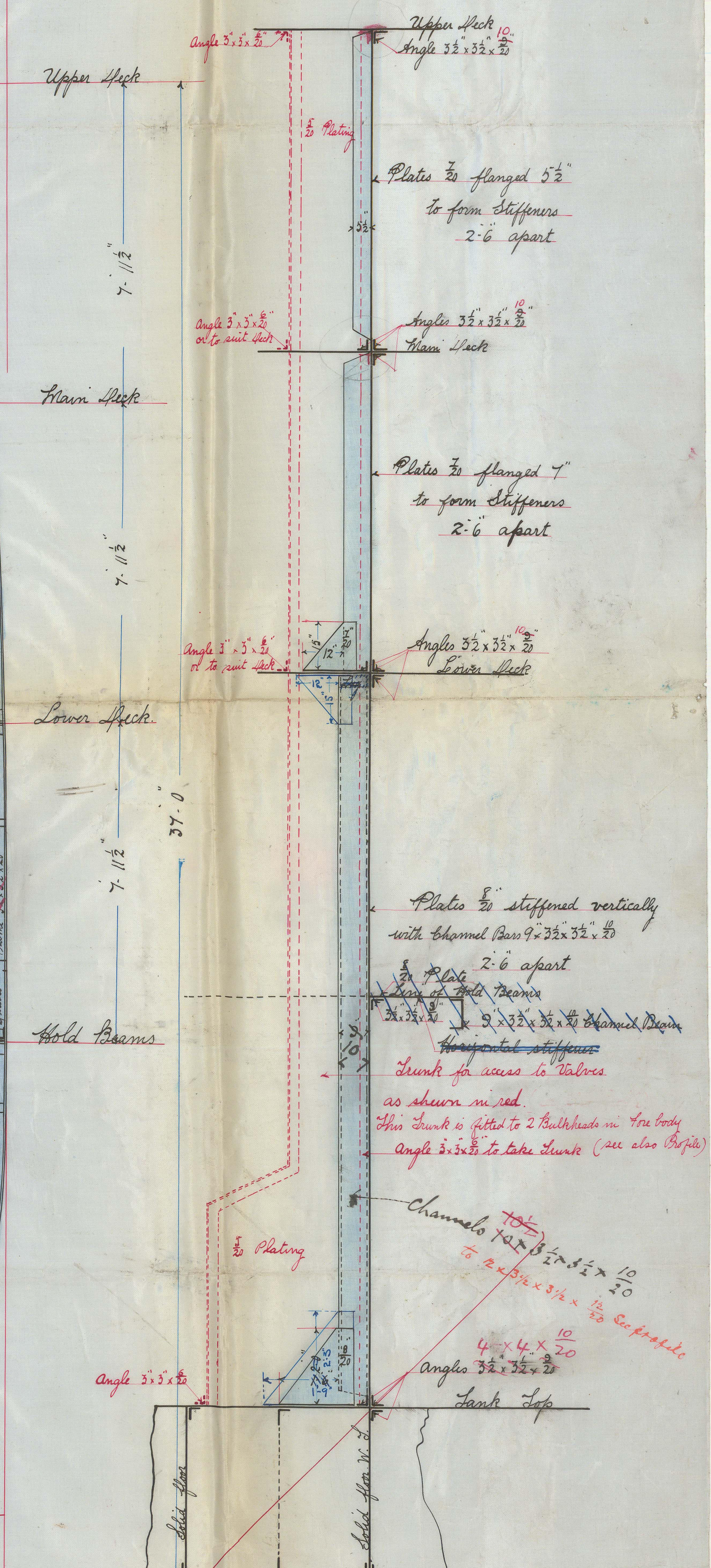
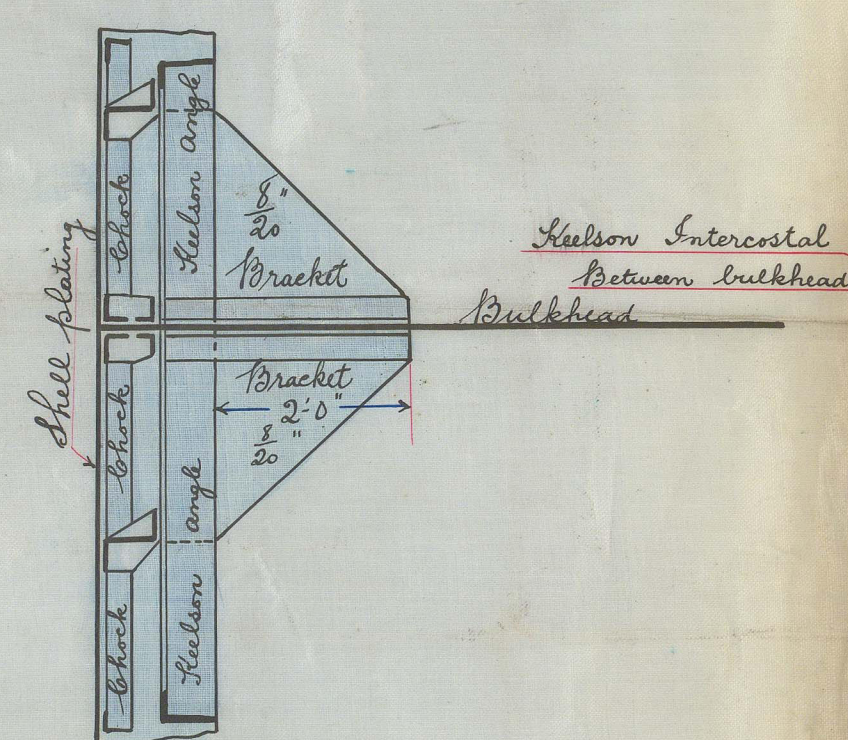


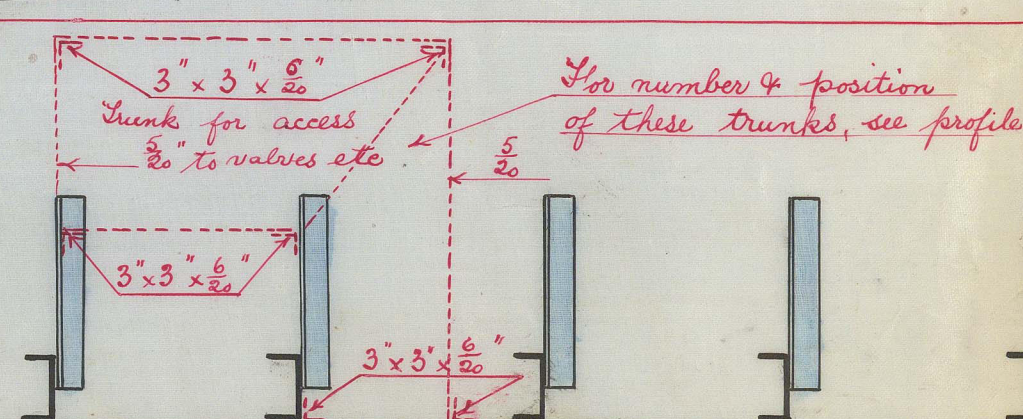
S. S. S.	No 307
Specimen	Bulkhead
Scale $\frac{1}{2}$ Inch = 1 Foot.	

Elevation

Plan View of Heelson



Plan under Lower Deck.



STIFFENING OF LOWER BULKHEADS  
BULKHEADS TO BE STIFFENED VERTICALLY WITH  $10 \times 8\frac{1}{2} \times 3\frac{1}{2} \times \frac{1}{2}$  CHANNELS  
SPACED 2' 6" APART.  
B.H.'S 181 TO HAVE REVERSE ANGLES  $2\frac{1}{2} \times 8\frac{1}{2} \times \frac{1}{2}$  ON EACH CHANNEL.  
IN ADDITION TO ABOVE {  
" 153 " " " " " ON ALTERNATE CHANNELS.  
" 124 " " " " " ON EVERY 3<sup>RD</sup> CHANNEL.

29/3/97  
7/4/97  
157/4/97



Clydebank & B.G.'s

S.S. No. 307.

"Moskwa"

Geo. Rpt.

No. 16439



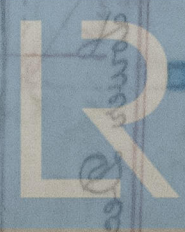
GLS270-0069

Bulphur  
SPACED  
5 1/2 121  
124

in London 70 121

the number of  
of these bricks in bulk

double bottom



© 2021

Lloyd's Register  
Foundation