

15.4.97

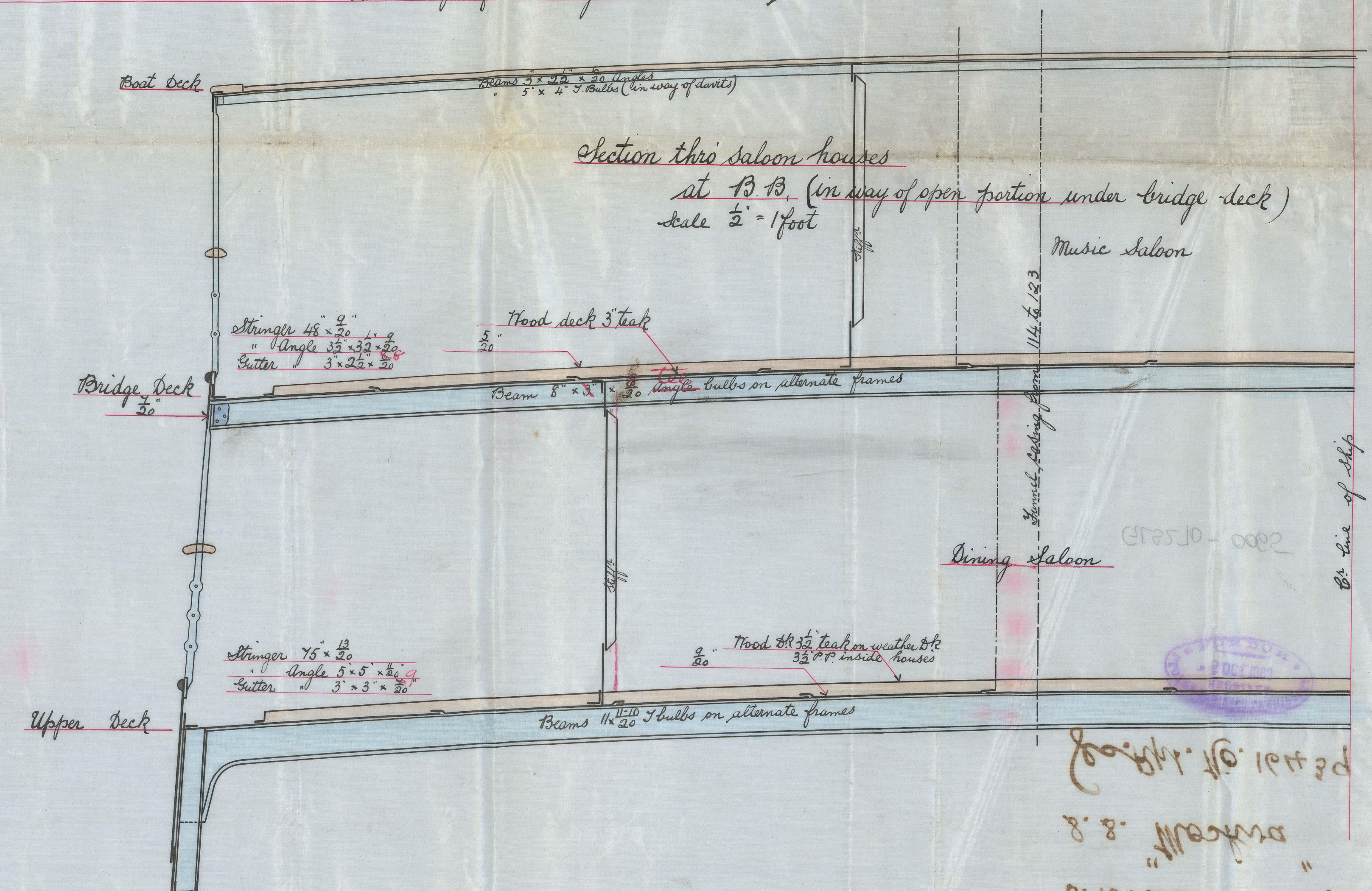
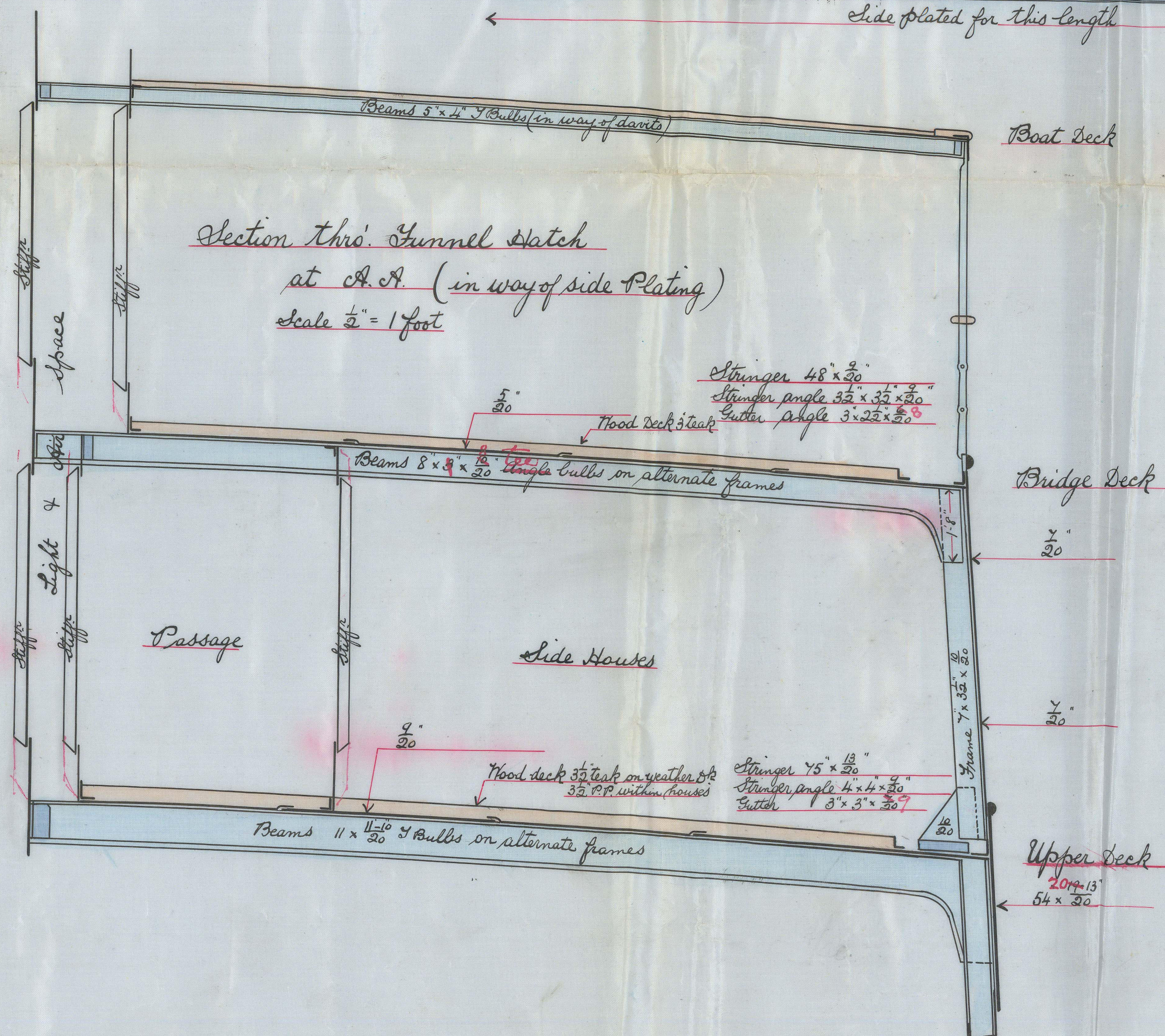
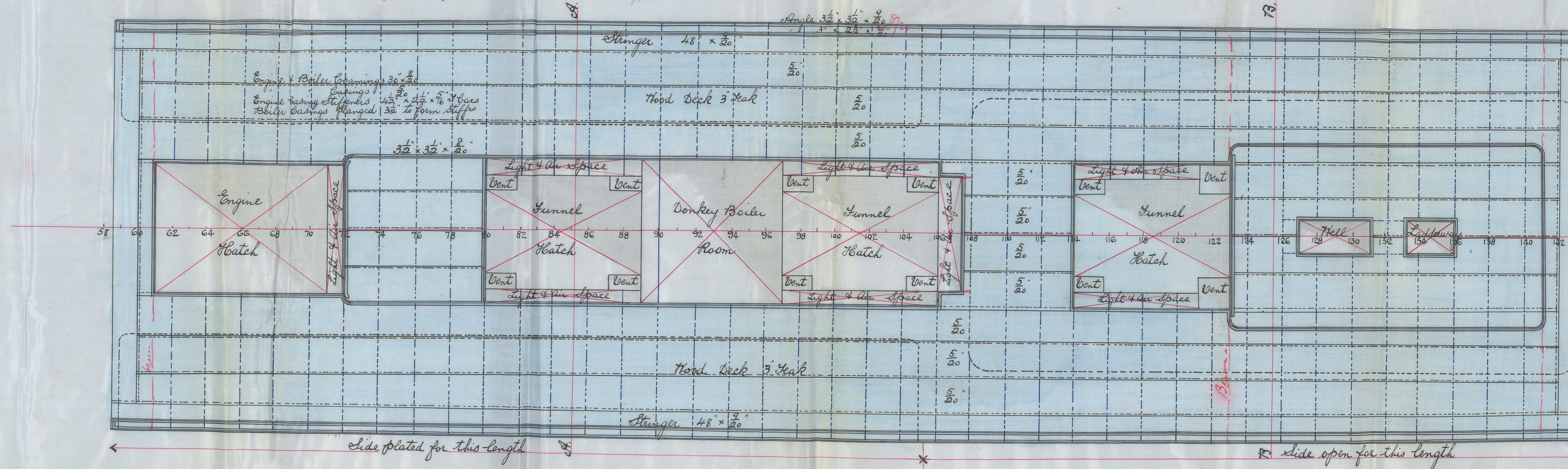
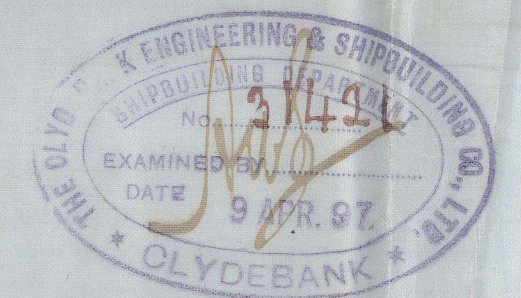
Bridge Deck Beams 8" x 8" x 20" Angle Bulbs See below

(Amended Plans)

G. S. S. No 307

# Plan of Bridge Deck

Scale 1/8" inch = 1 Foot



10' 0" at 13.0  
8.8" at 13.0  
8.8" at 13.0  
10' 0" at 13.0



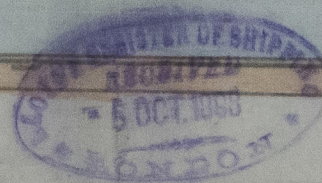
R/H/D  
R/H/D

Clydebank 61

S. B. Co's No. 307

S. S. "Moskva"

Sec. Rpt. No. 16439



GLS270-0065



© 2021

Lloyd's Register  
Foundation