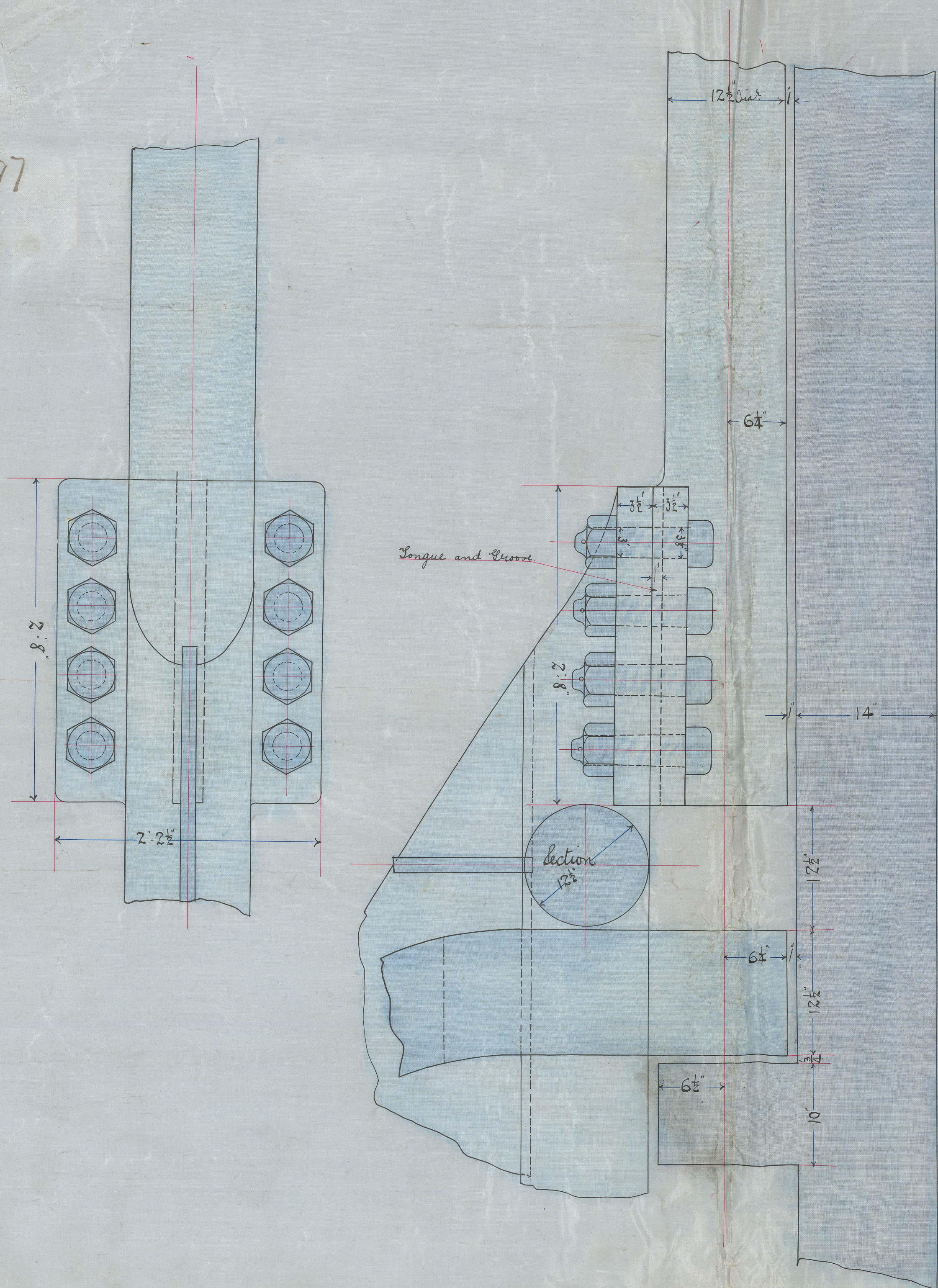
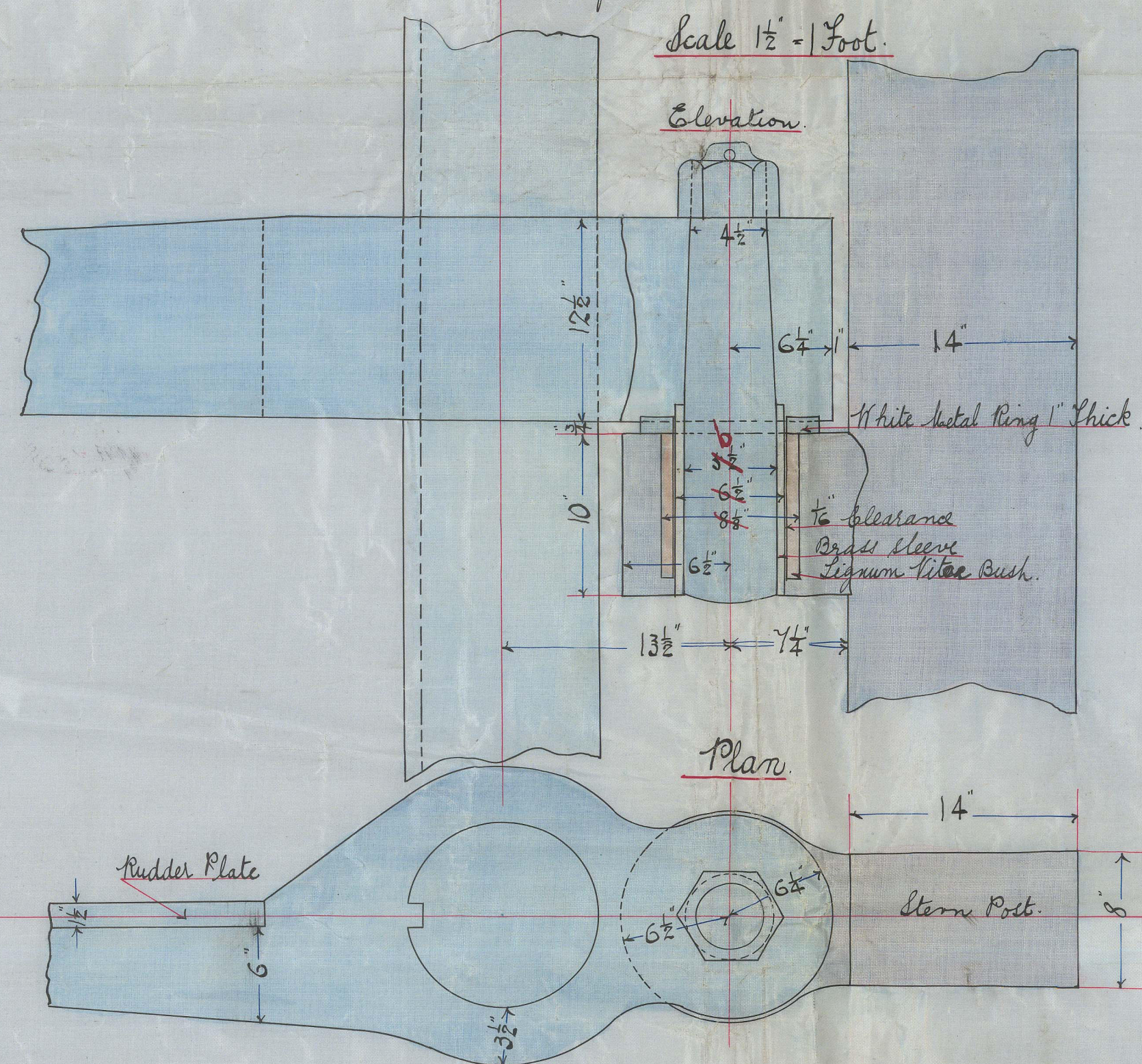


28.4.97



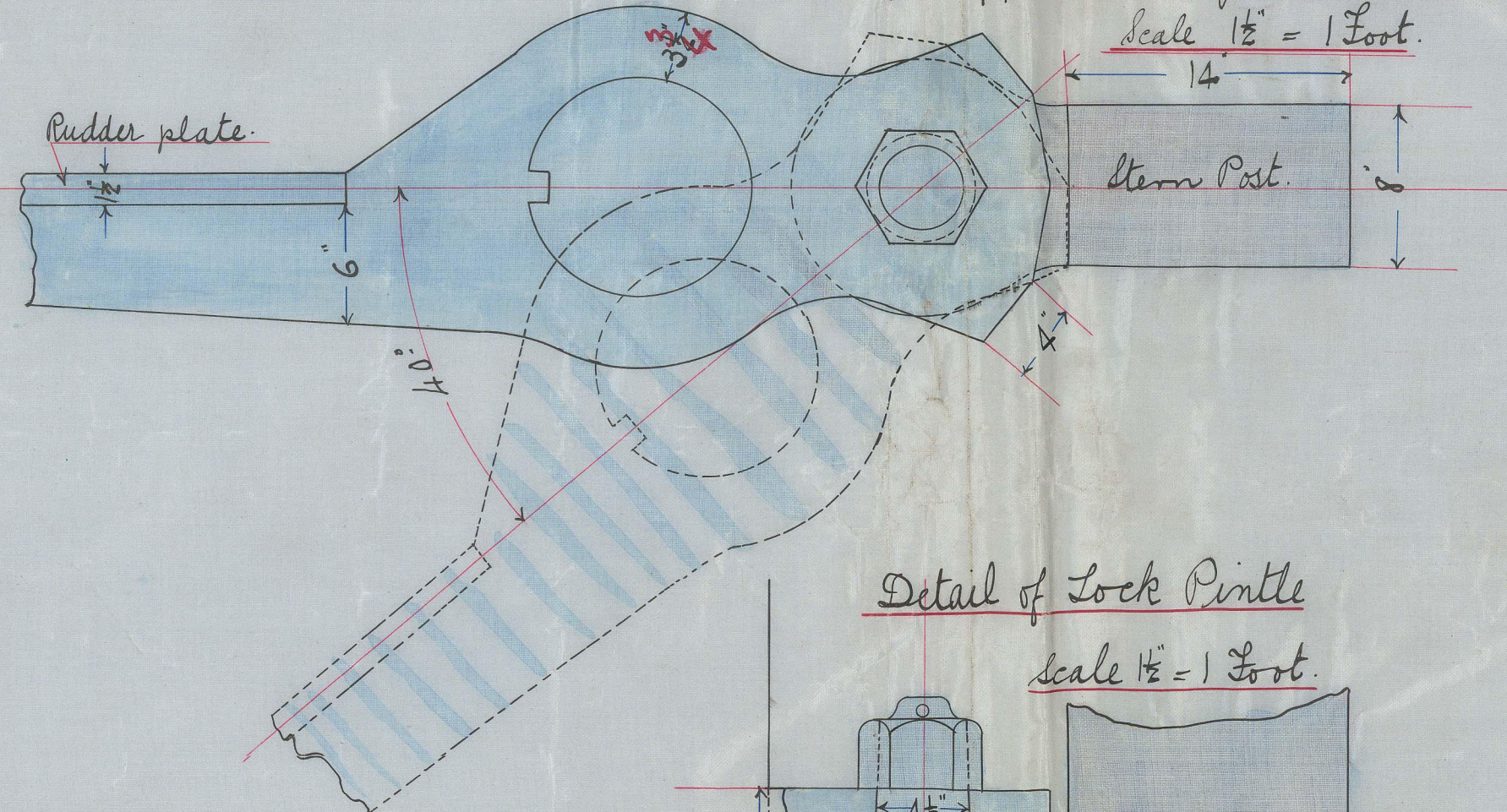
Detail of Rintle Marked "B"

Scale $1\frac{1}{2}' = 1 \text{ Foot}$.



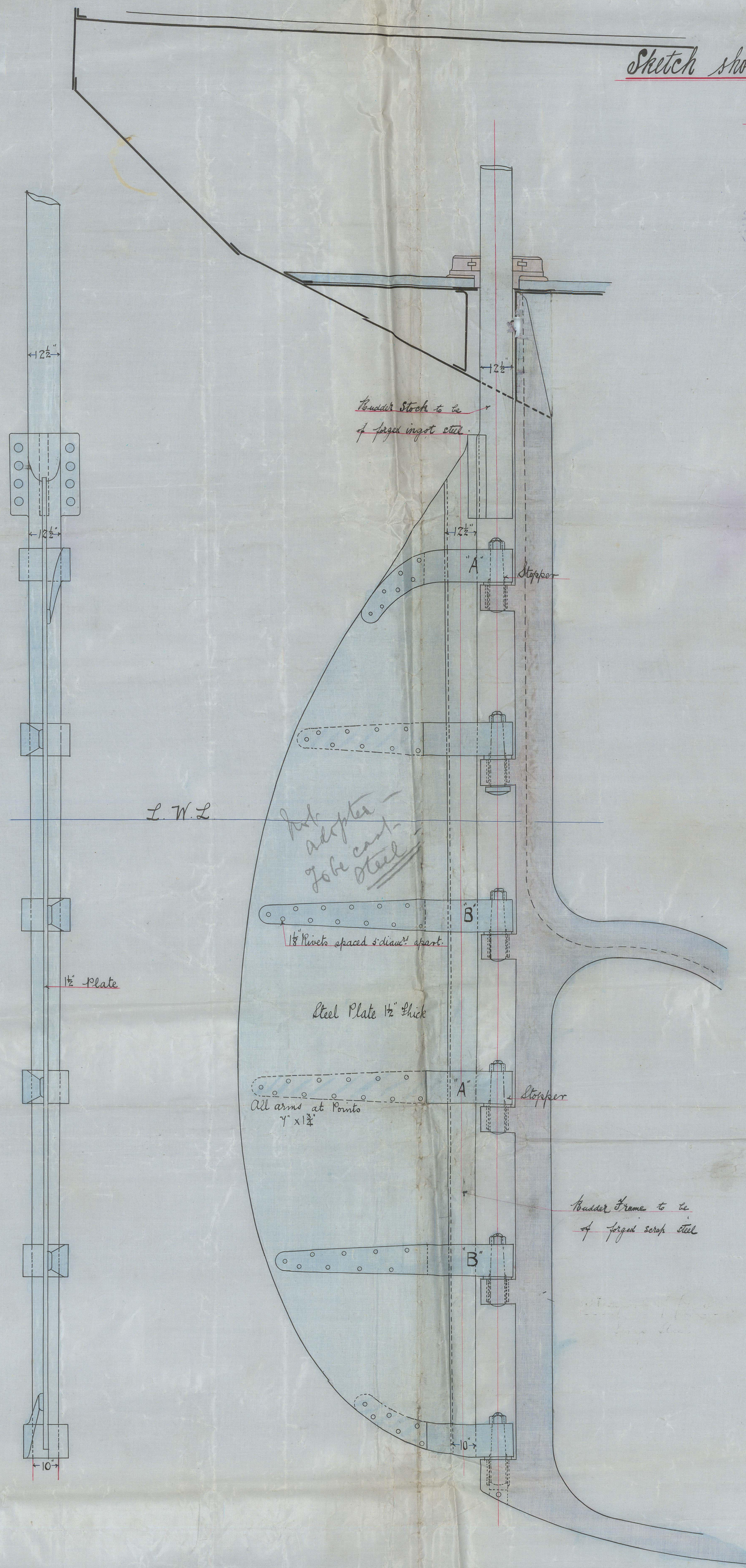
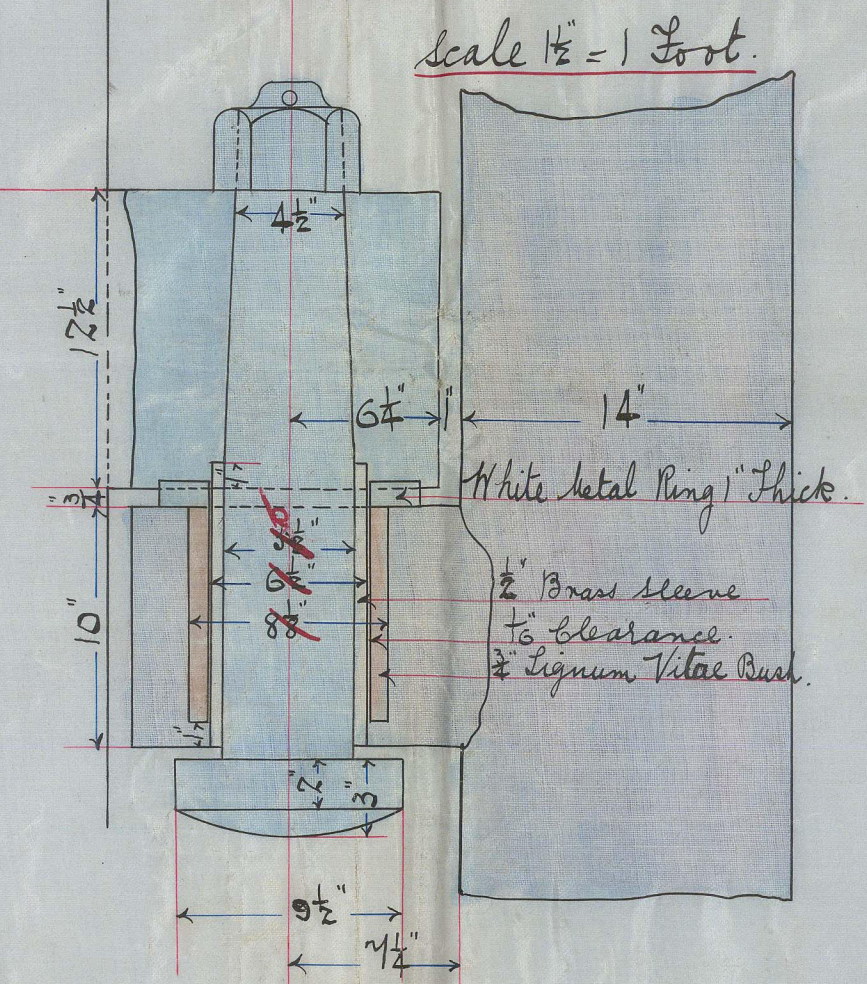
Detail of Stopper at Sledgeons Marked "A"

Scale $1\frac{1}{2}" = 1 \text{ Foot.}$



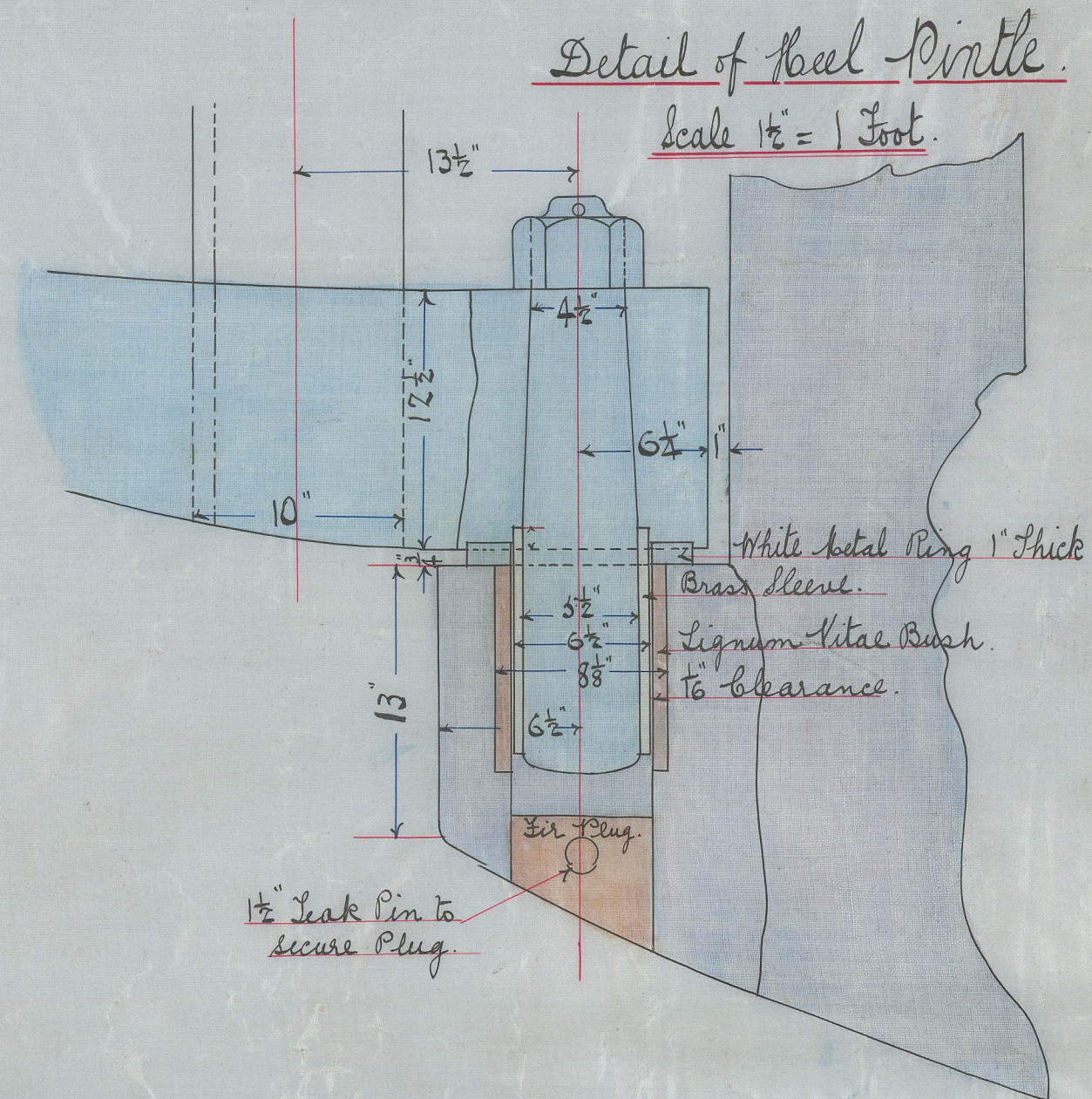
Detail of Lock Pintle

Scale $\frac{1}{2}'' = 1 \text{ Foot}$.



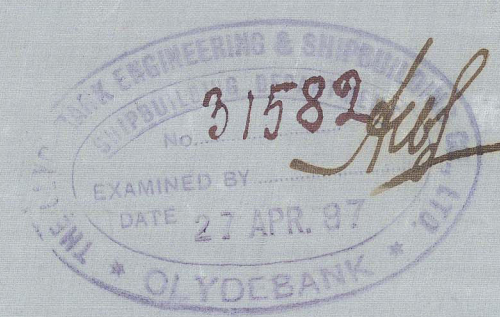
Detail of Keel Pin

Scale $1\frac{1}{2}'' = 1 \text{ Foot}$.



N^o 307.
Sketch showing proposed forged steel knudder

Scale $\frac{1}{2}$ " Inch = one Foot.



J.H.L.
28/4/97

Clydebank Yard
Noted 6/3/97
M.S.