

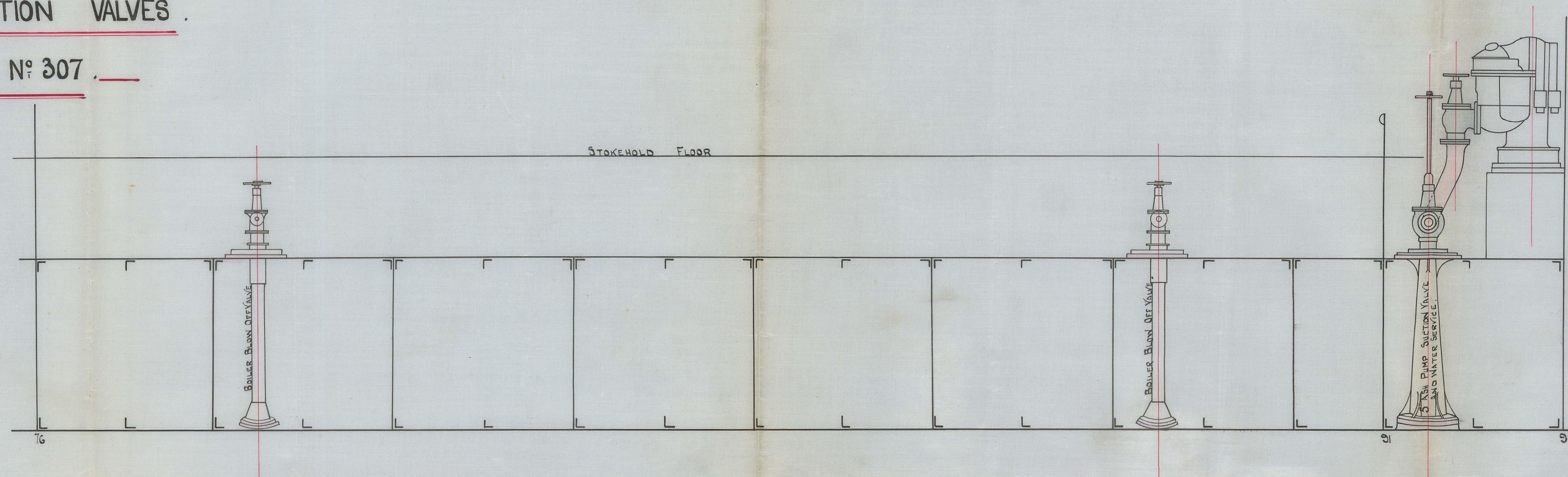
*Mr
26.8.97.*

SKETCH SHEWING ARRANGEMENT OF BOILER BLOW-OFF
AND ASH-EJECTOR PUMP SUCTION VALVES.

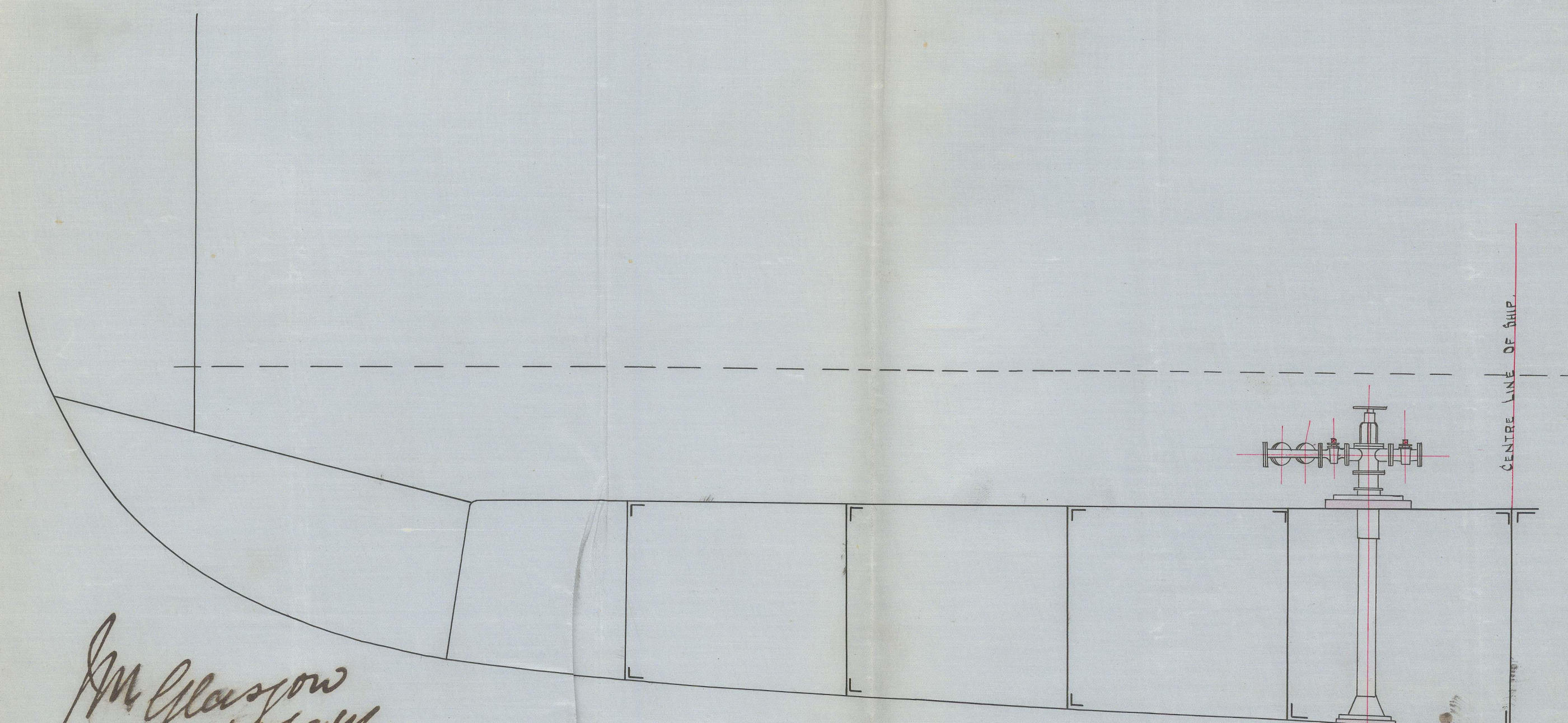
T.S.S. "MOSKVA" ENGINES N° 307.

SCALE $\frac{1}{2}$ " = 1 FOOT.

NOTE:- SAME ARRANGEMENT FOR THREE BOILER ROOMS.

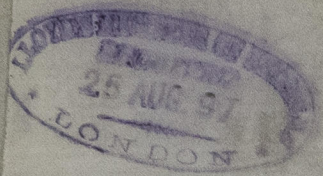


SECTION AT 91 LOOKING FORWARD
ASH-EJECTOR SEA SUCTION.



SECTION AT 78 LOOKING FORWARD
BLOW OFF KINGSTON.

*Mr. Glasgow
24/8/97*

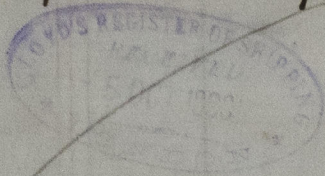


Clydebank R & F

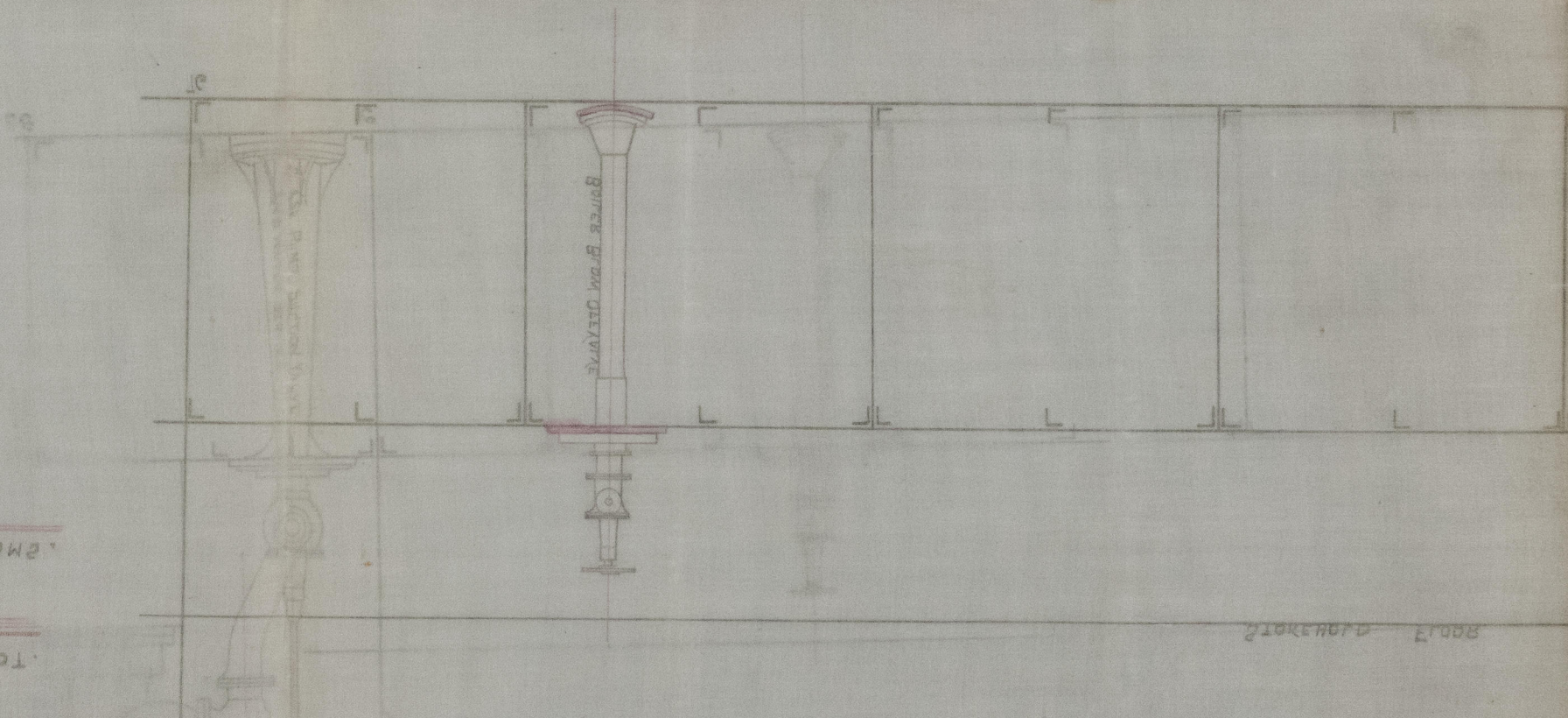
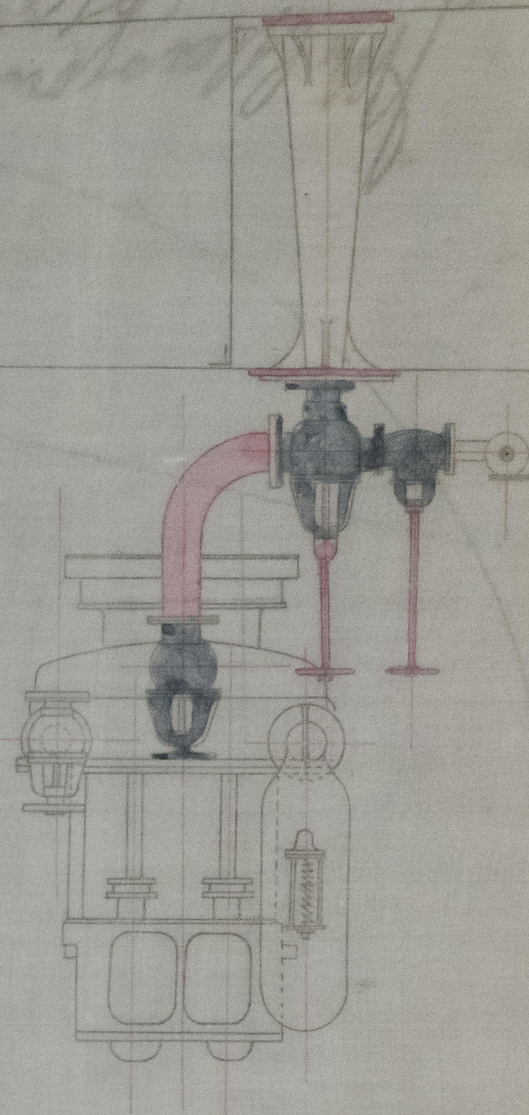
S.B. Co's No. 307

8.8" Moskva

So. Rpt. No. 16439



GLS270-0061



NOTE:- SAME ARRANGEMENT FOR THREE BOILER ROOMS.

SCALE 1/8" = 1 FOOT.

T.S.S. MOSKVA, ENGINE NO. 307

AND ASH-ELECTOR PUMP SUCTION VALVES.

SKETCH SHOWING ARRANGEMENT OF BOILER BLOW-OFF

Sp. Rpt. No. 16439



© 2021

Lloyd's Register
Foundation