

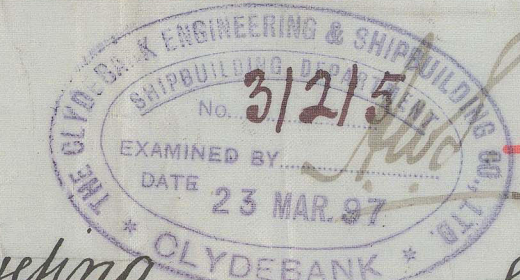
3.3.97
18.4.97
28.4.97

To Class 100 A. Three deck ship
Dimensions 470' L.P. x 58' x 37' M.D.

Moskva

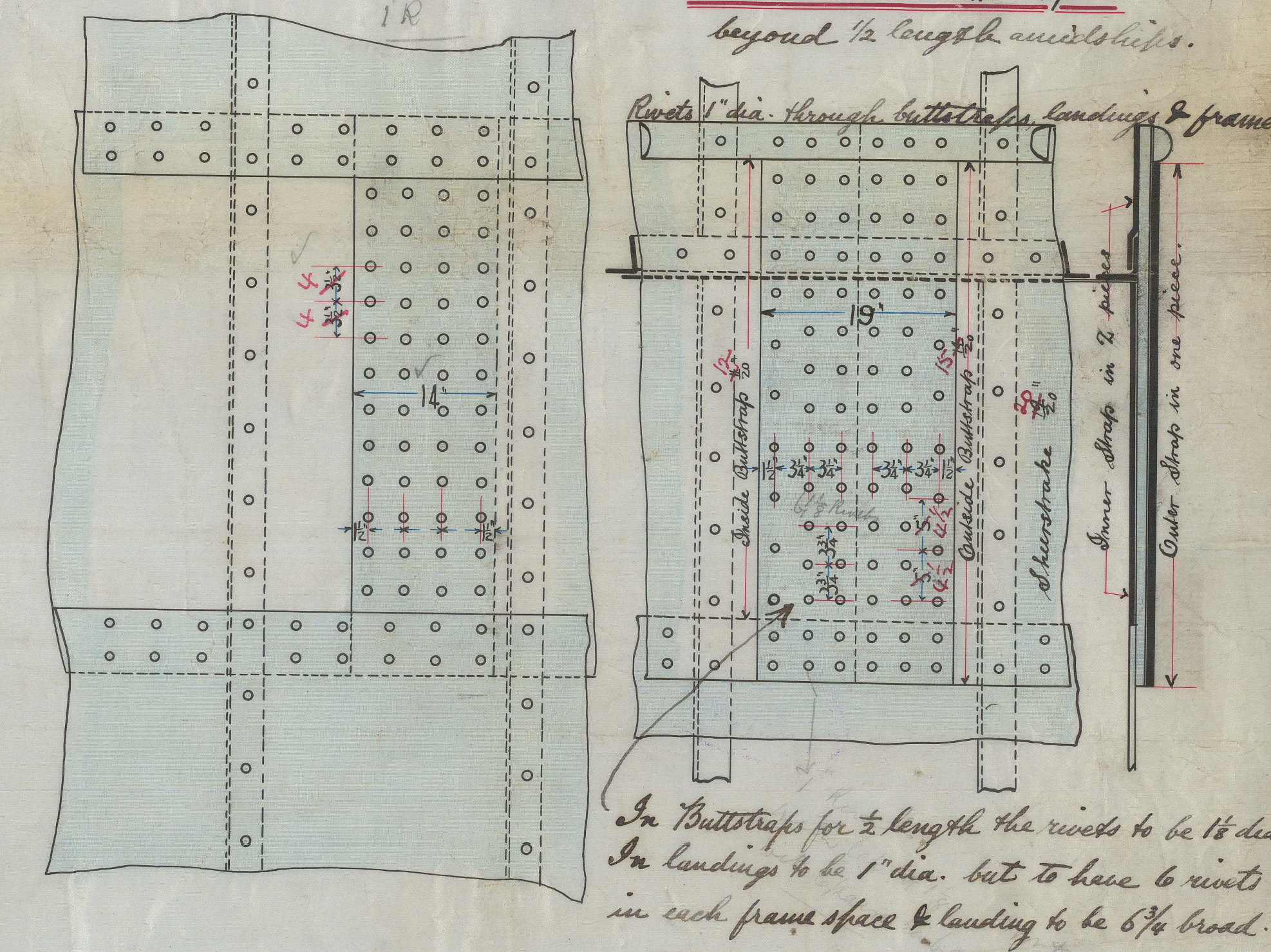
J. S. S. No 307
Sectional Drawing

Scale 1/2" = 1 foot

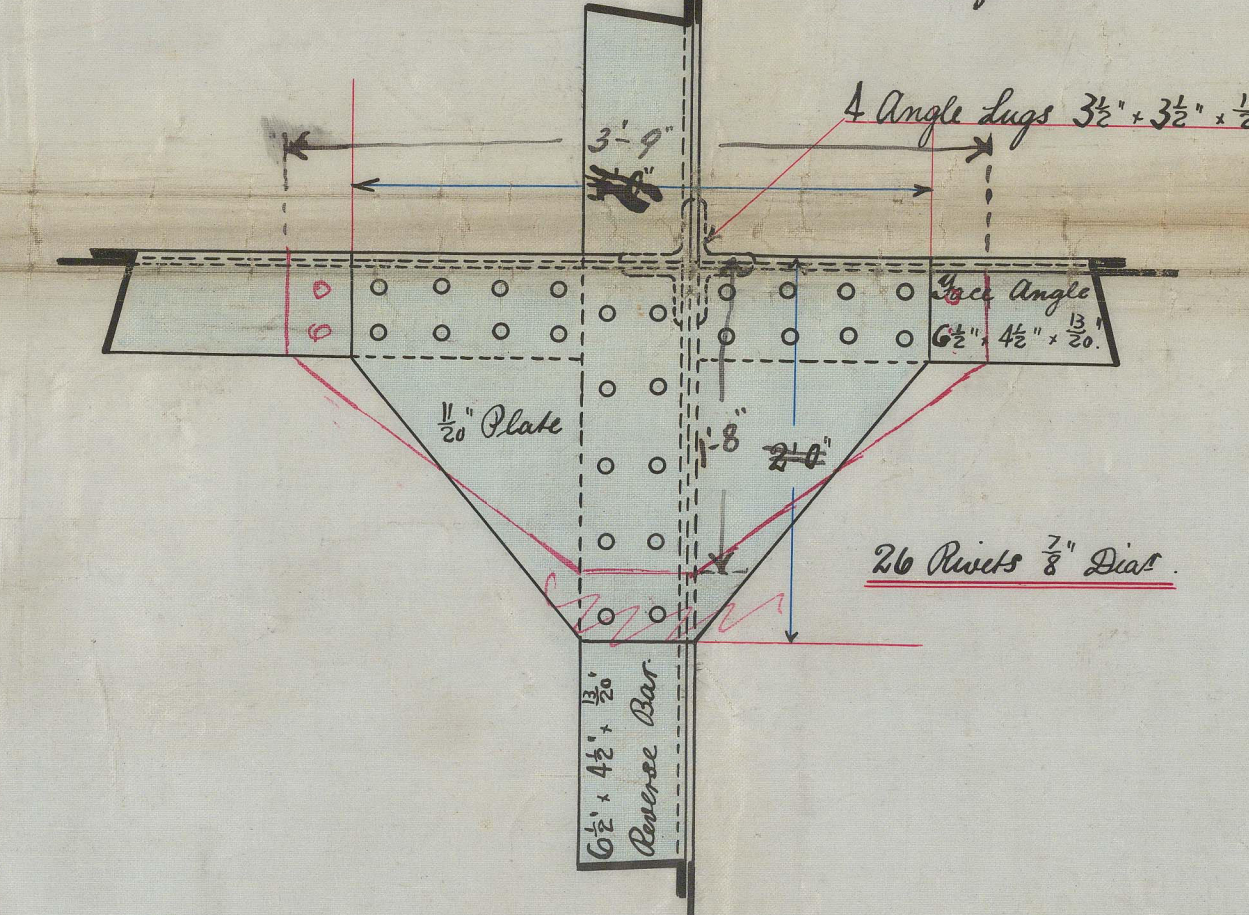


Sketch of Racking in Quadruple Butt Lap

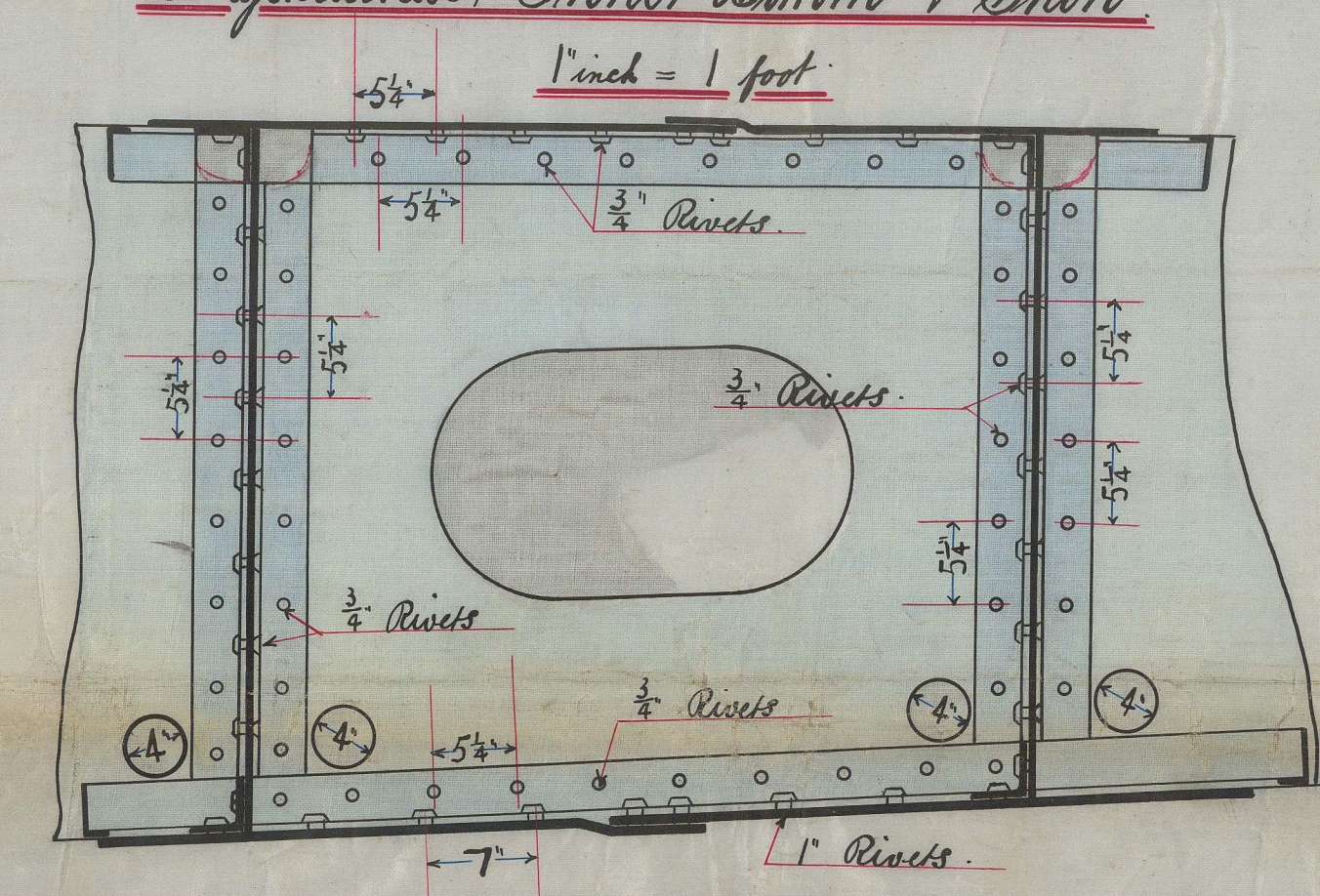
Sketch of Racking in Showstrake Butstraps



Sketch showing connection of Half Diamond Plates to Web Frames and Stringers



Sketch showing Racking of Floors to Longitudinals Inner Bottom & Stern

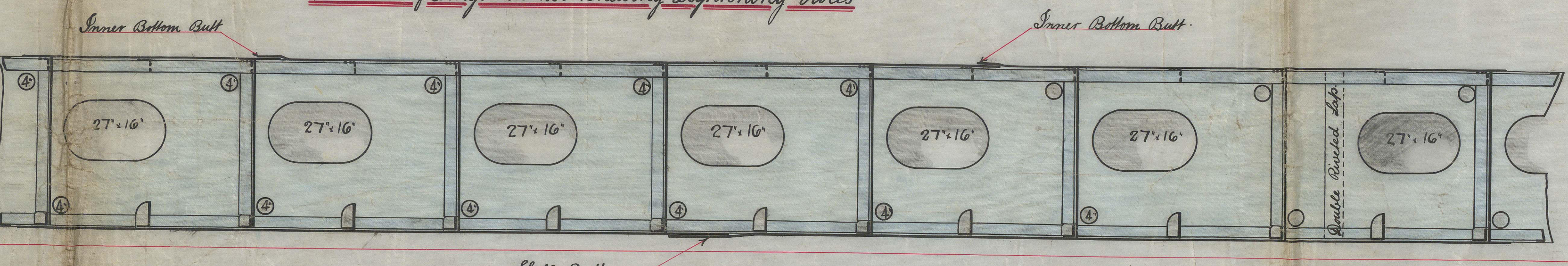


Section in way of Engine and Boiler Rooms showing Web Frames

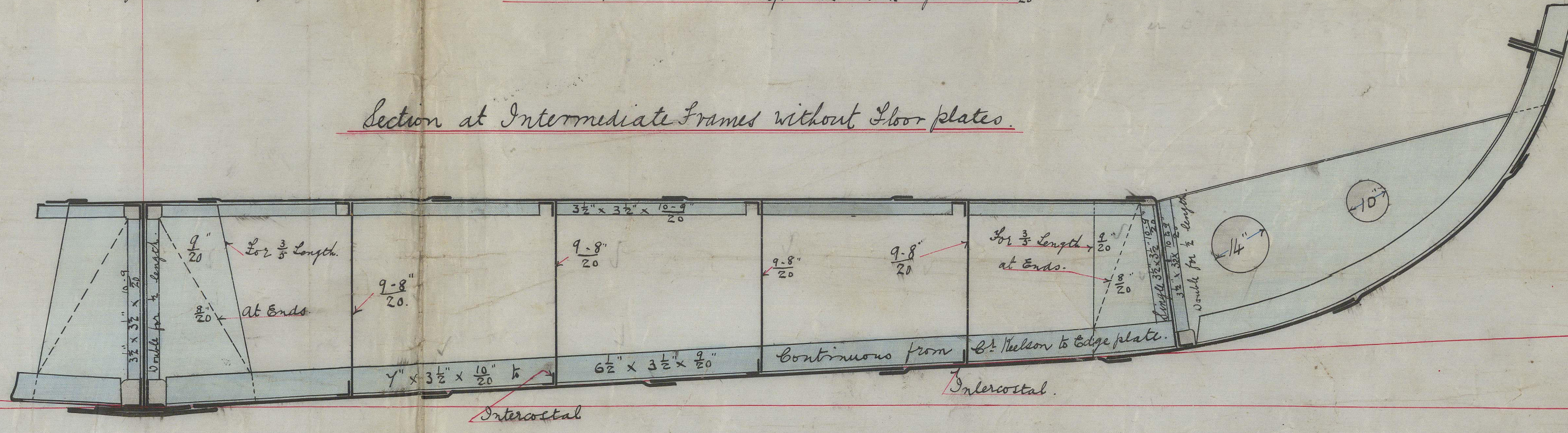


Detail of Engine Skating will be submitted later

Sketch of longitudinal showing Lifting Notes



Section at Intermediate Frames without Floor plates



17/10
27/10/97
15/4/97

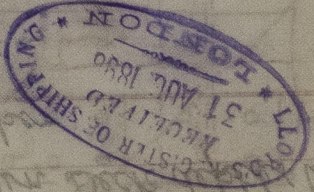
GLS270-0060

Midship Section
Claydon & S. B. Co.

No. 307
S.S. Moskva

Glasgow Report

No. 16439

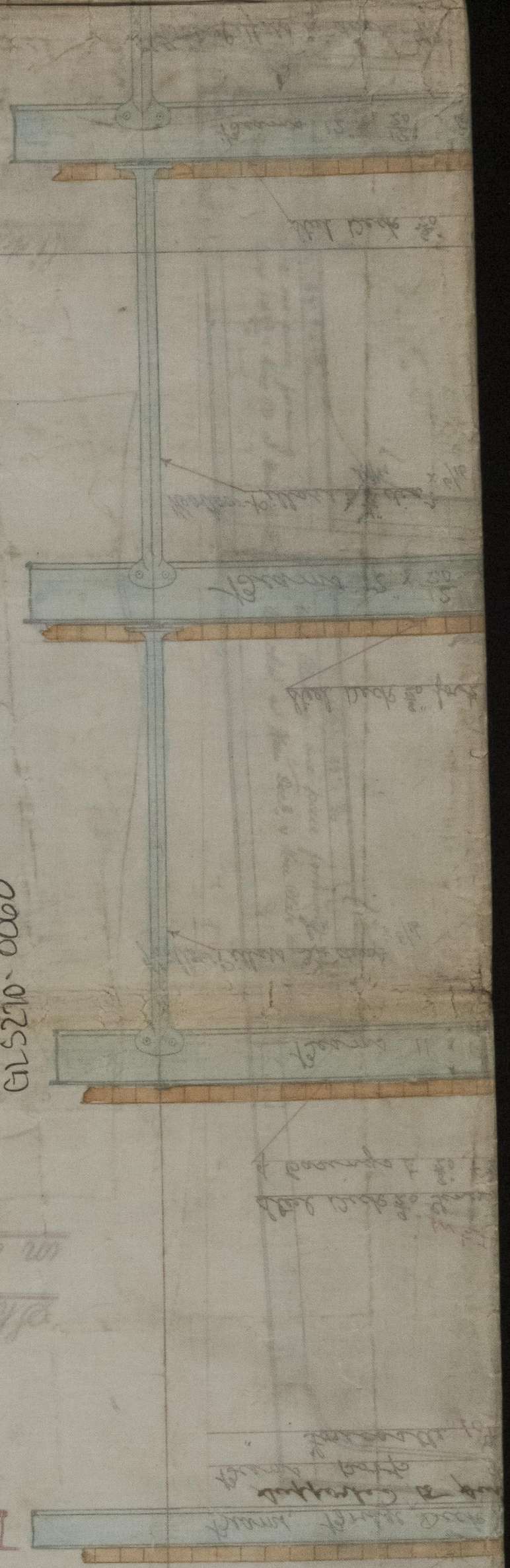


15.52
84.41
80.8

208.20
428.00
151.10
1.00

00.00

GLS210-0060



Sectional Drawing.

Sectional Drawing
of S.S. Moskva
No. 307



© 2021

Lloyd's Register
Foundation

